

To Rt 29

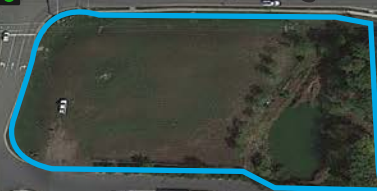


Caliber Collision

Potomac Truck Center

University Blvd 2,400 VPD

Wellington Rd 15,000 VPD



Fannon Petroleum

Phoenix Steel Erectors, Inc

Contact us:

Lee Cherwek
Vice President
+1 540 373 3434
lee.cherwek@colliers.com

Robby Brownfield
Senior Vice President
+1 804 267 7227
robby.brownfield@colliers.com

1.9 acre site for ground lease

13380 University Blvd, Gainesville, VA

- Highly visible pad site at the signalized intersection of University Blvd and Wellington Rd
- Adjacent to Jiffy Lube Live Amphitheater
- M-1 zoning, Heavy Industrial District
- Rough graded
- Utilities available

Join nearby retailers:



523 Sophia Street
Fredericksburg, VA 22401
P: +1 540 373 3434
F: +1 540 373 8782
colliers.com

Information herein has been obtained from sources deemed reliable, however its accuracy cannot be guaranteed. The user is required to conduct their own due diligence and verification.
Copyright © 2022 Colliers International.

M-1, Heavy Industrial District

- Alarm systems operations, office.
- Ambulance service, commercial.
- Ambulance service maintenance facility.
- Animal shelter.
- Assembly (non-HAZMAT).
- Bakery, industrial.
- Blacksmith, welding, or machine shop.
- Boat building and repair yard.
- Brewery and bottling facility.
- Building materials sales yard.
- Catalog sales, contractor; tradesman, and industrial equipment (with or without showroom).
- Catering, commercial (off premises).
- Coal, wood, and lumber yards.
- Cold storage.
- Company vehicle service facility.
- Computer and network services.
- Contractor or tradesman's shop (limited), no trash or refuse removal service.
- Contractor or tradesman's shop, no trash or refuse removal service.
- Data Center within the Data Center Opportunity Zone Overlay District.
- Distillery.
- Dry cleaning/garment processing plant, wholesale facility.
- Dry cleaning/garment processing facility, retail, greater than 3,000 square feet.
- Electronic equipment and component manufacturing, assembly, processing, and distribution.
- Equipment and material storage yard; no trash or refuse removal service.
- Feed and grain storage and distribution center.
- Flea market.
- Food service, institutional.
- Furniture repair, dipping and stripping, upholstery.
- Greenhouse or nursery, wholesale (not more than 20 percent of lot area may be devoted to garden center uses).
- Gunsmith shop.
- Janitorial service.
- Kennel, commercial.
- Laundry, industrial.
- Manufacture and fabrication of signs.
- Manufacturing, candy/confectioners.
- Manufacturing, cosmetics and perfume.
- Manufacturing, electronic components.
- Manufacturing, fabricated metal.
- Manufacturing, musical instruments and toys.
- Manufacturing, pharmaceuticals (non-HAZMAT process).
- Manufacturing, pottery, ceramics.
- Marble/tile, processing, cutting and polishing.
- Masonry and stoneworking.
- Medical or dental laboratory.
- Motor vehicle repair.
- Motor vehicle sales, rental or lease (unlimited), excluding passenger motor vehicles less than 7,500 pounds gross vehicle weight. Floor area devoted to storage of parts inventory used for service and repair shall not be included in secondary retail sales floor area calculations.
- Motor vehicle service.
- Moving and storage.
- Office.
- Package, telecommunication, and courier service (unlimited storage of equipment, supplies and vehicles).
- Parking, commercial.
- Photographic processing laboratory.
- Publishing and printing.
- Radio or TV broadcasting station.
- Railroad freight depot.
- Railroad passenger station.
- Recording studio.
- Recyclable materials separation facility.
- Recycling collection points, subject to the standards in section 32-250.84.
- Research and development (non-HAZMAT).
- Self-storage center, in accordance with the provisions of section 32-400.14.
- Sheet metal fabrication.
- Solar energy facility.
- Taxi or limousine operations and service facility.
- Tool and equipment rental, service and repair, heavy and minor.
- Trade, technical or vocational school.
- Trailer sales (retail), lease, storage, repair and maintenance.
- Veterinary hospital.
- Warehouse (non-HAZMAT).
- Waterfront or maritime uses.
- Wholesaling (non-HAZMAT).

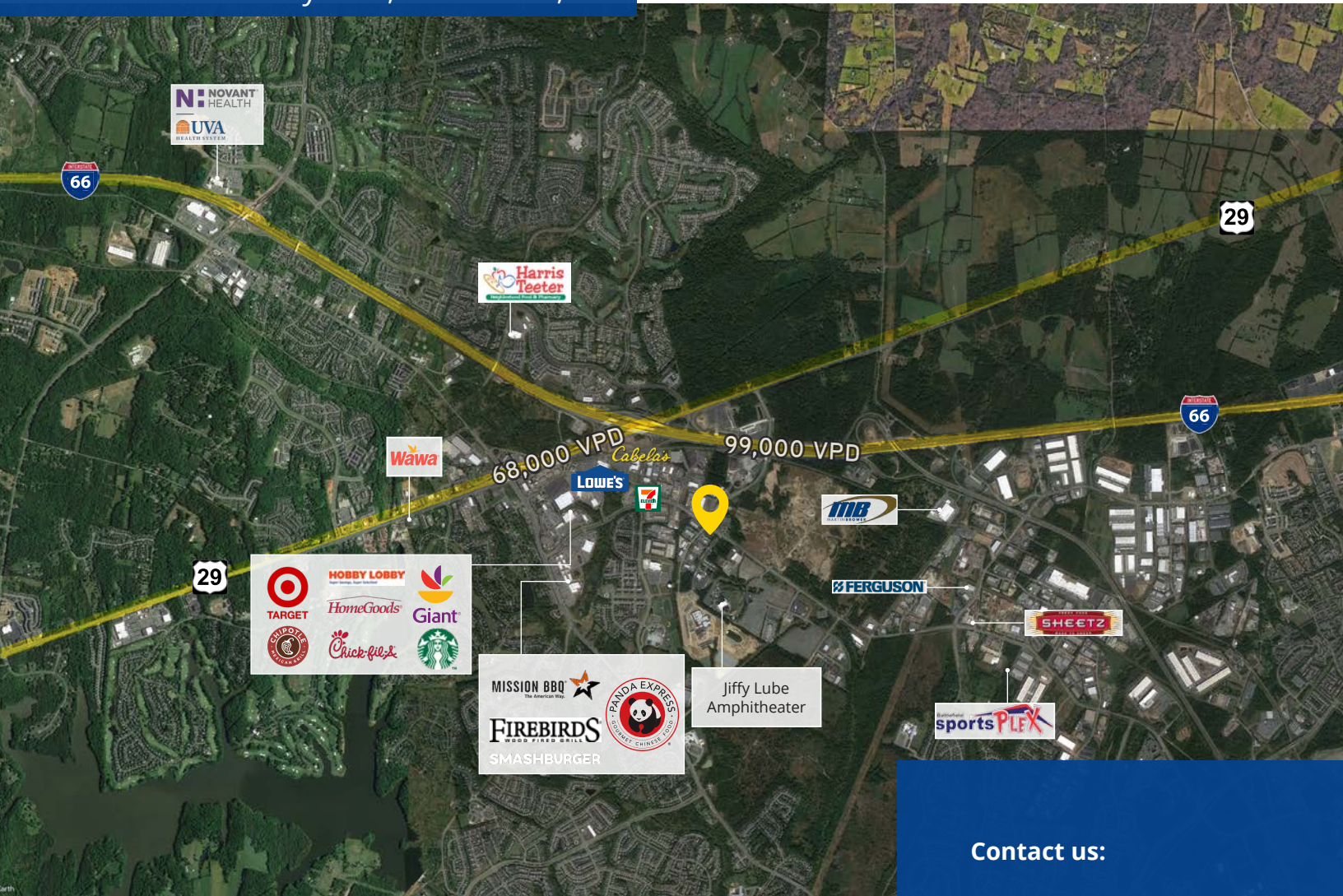
Secondary uses

- Locksmith.
- Quick service food store.
- Motor vehicle fuel station (limited to vehicles associated with the primary business or use).
- Recreation facility, commercial (indoor).
- Restaurant.
- Restaurant, carry-out.
- Retail store.

Special uses (special permit)

- Asphalt/concrete plant.
- Assembly (HAZMAT).
- Data Center outside the Data Center Opportunity Zone Overlay District.
- Day care center..
- Extraction of mineral resources and related industrial/ wholesaling operations, including operation of crushers and sorting equipment customarily accessory thereto..
- Heliport.
- Manufacturing and processing, other (HAZMAT or non-HAZMAT).
- Marina.
- Motor vehicle auction (wholesale).
- Motor vehicle fuel station.
- Motor vehicle graveyard.
- Motor vehicle impoundment yard.
- Motor vehicle sales, secondary to motor vehicle repair.
- Motor vehicle storage yard.
- Motor vehicle towing.
- Range, shooting, indoor or outdoor.
- Recycling plant.
- Research and development (HAZMAT).
- Sawmill.
- Stadium, arena, or amphitheater, indoor or outdoor.
- Storage facility (HAZMAT).
- Testing/experimental laboratories (HAZMAT).
- Warehouse (HAZMAT).
- Water transportation facility.
- Wholesaling/storage and processing (HAZMAT).

13380 University Blvd, Gainesville, VA



Demographics



2021
population

54,614
(3 miles)

118,301
(5 miles)

379,137
(10 miles)

Daytime
population

53,908
(3 miles)

116,832
(5 miles)

350,664
(10 miles)



2021 Average
Household Income

\$161,852
(3 miles)

\$150,306
(5 miles)

\$149,090
(10 miles)

Contact us:

Lee Cherwek

Vice President
+1 540 373 3434
lee.cherwek@colliers.com

Robby Brownfield

Senior Vice President
+1 804 267 7227
robby.brownfield@colliers.com

Colliers

523 Sophia Street
Fredericksburg, VA 22401
P: +1 540 373 3434