

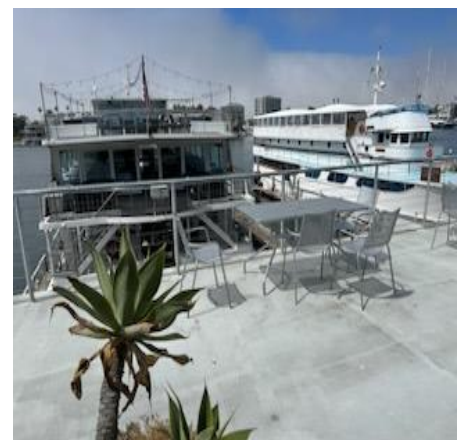
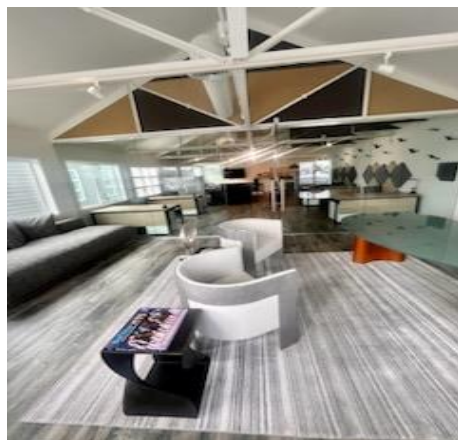
For  
Sublease

2429 W Coast Hwy, Newport Beach, CA 92663,  
Suite 208

## High End Office Space Available Immediately



*The premises are incredible, move in ready with upgraded furnishings. Suite may be subleased with the existing modern contemporary furniture and equipment. Views are superb of the water and include a private patio complete with table and chairs. Project is near restaurants, shopping, and fashion island.*



Waterfront Office-space for  
Sublease-  
Sublease Expires 12/31/2024  
Asking rent: \$9,500.00 per  
month

1,379 Rentable sq. ft.:

"Plug and Play" fully  
furnished suite, wired for  
internet.

Call Karen Sunday, Broker  
to tour (949)-632-7727:

Suite Description:

The premises are beautifully  
decorated and located at the  
Mariner's Mile Project and face  
the Bay.

The configuration is one large  
private office with full height glass  
walls, a very large open area  
including a kitchenette, tv and  
several desks.

Windows open for fresh air, suite  
is wired for internet.

Surface parking is free and in the  
common area.

*Karen Sunday*

949-632-7727

Karen@karensunday.com

Broker ID #01883124



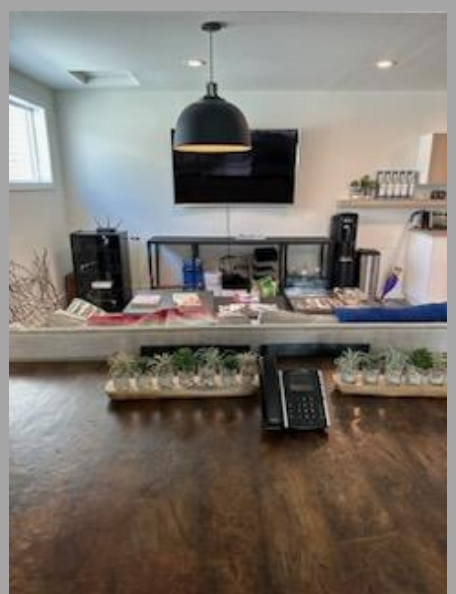
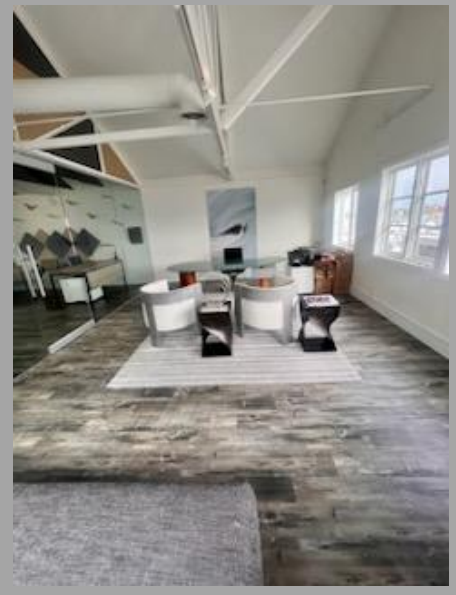
KAREN SUNDAY  
& ASSOCIATES, INC.

LIFE IS A LEASE, I NEGOTIATE WELL!

23 Corporate Plaza Drive | Suite 150 | Newport Beach | CA 92660



**Video of the premises and the floorplan on the next page.**



Please click on the link above, to view the premises.

Floor plan below:

