

# MARKETPLACE AT SAVANNAH RIDGE

Hwy 231 and Joe B. Jackson Blvd, Murfreesboro, TN



**CLICK FOR  
AERIAL VIEW**

**Shop Space and Outparcels  
AVAILABLE**



- Directly across from Walmart Supercenter at the signalized intersection of Hwy 231 and Joe B. Jackson Blvd.
- Well positioned to serve a large growing trade area on the south side of Murfreesboro



OUTLOT  
GROUND LEASE  
SINGLE TENANT USE  
1.76 ACRE

FUTURE

OUTLOT  
1.70 ACRE

5,500 SF  
RETAIL BUILDING  
AVAILABLE

FUTURE

PENDING

0.56 ACRE  
PENDING

PENDING



Ascend  
Urgent Care

boakin  
Boho Nails

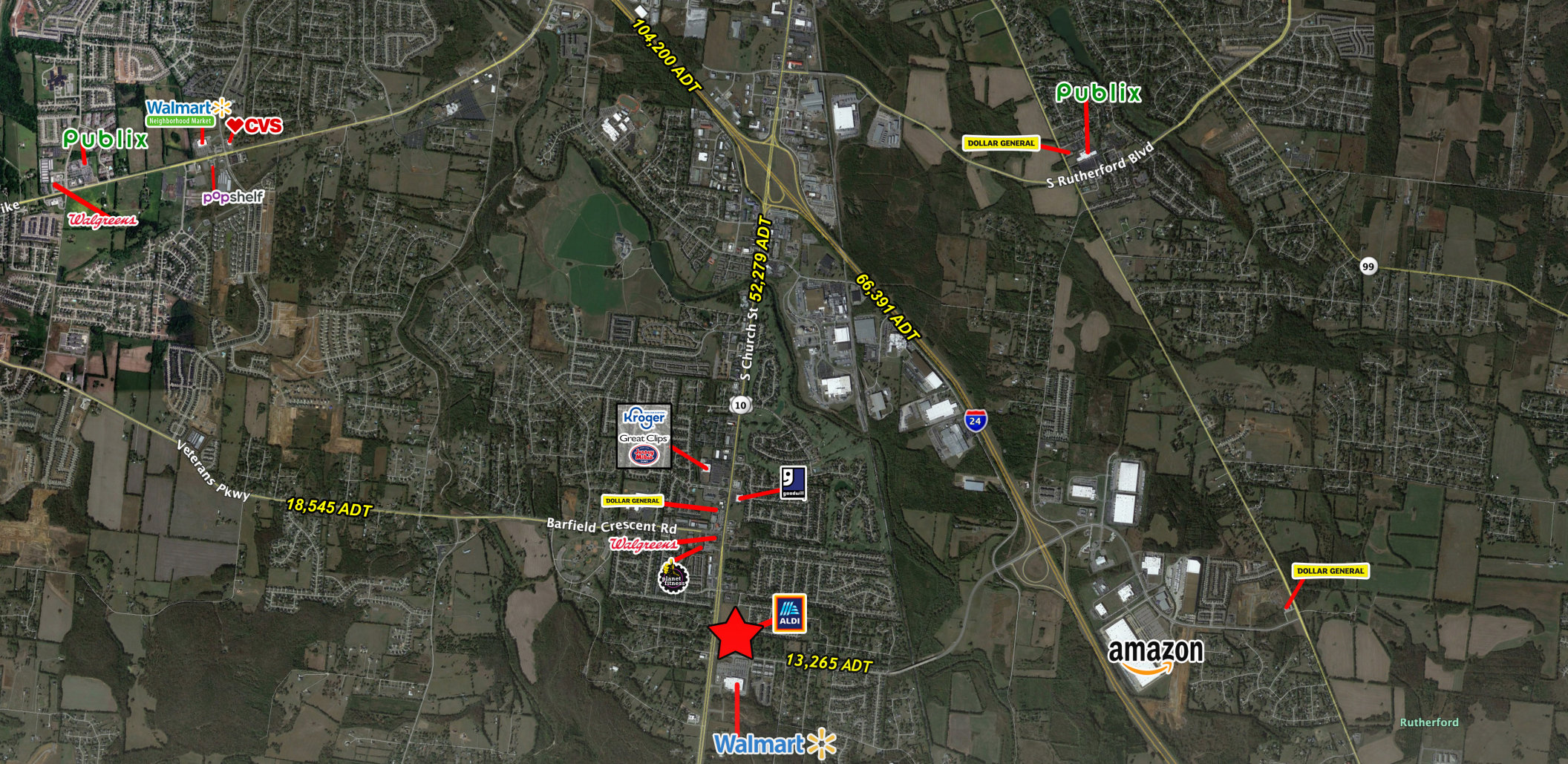
PACIFIC  
DIGITAL SERVICES

AVAILABLE  
SINGLE TENANT  
GROUND LEASE

38,251 ADT

13,265 ADT







TITANS CIRCLE

13,265 ADT

JOE B JACKSON PARKWAY

38,251 ADT

(TOWNHOME PHASE)

FUTURE

FUTURE

OUTLOT  
1.70 ACRE

OUTLOT  
GROUND LEASE  
SINGLE TENANT USE  
1.76 ACRE

5,500 SF  
RETAIL BUILDING  
AVAILABLE

PENDING



AVAILABLE  
SINGLE TENANT  
GROUND LEASE

PENDING

0.56 ACRE  
PENDING



Ascend  
URGENT CARE

Boho Nails  
PACIFIC

LOT 1

LOT 2

LOT 3

LOT 4

LOT 5

LOT 6

U.S. 231

EDGE OF PAVEMENT



# View Looking West



# South View Shelbyville Pike (S Church St)





# DEMOGRAPHIC SUMMARY

	1 Mi Radius	3 Mi Radius	5 Mi Radius	20 Min Drivetime
<b>2023 Est. Population</b>	7,138	25,926	87,427	175,403
<b>2028 Prj. Population</b>	8,493	29,367	95,569	196,909
<b>Growth (2023-2028)</b>	3.8%	2.7%	1.9%	2.5%
<b>2023 Households</b>	2,877	9,946	33,843	67,287
<b>2028 Households</b>	3,581	11,772	38,679	78,886
<b>Growth (2023-2028)</b>	4.9%	3.7%	2.9%	3.4%
<b>2023 Avg. Income</b>	\$106,794	\$101,074	\$94,810	\$91,681
<b>2028 Avg. Income</b>	\$88,532	\$87,777	\$84,887	\$79,933
<b>2023 Med. HH Income</b>	\$91,163	\$86,080	\$77,953	\$77,773
<b>2028 Med. HH Income</b>	\$86,292	\$81,525	\$73,470	\$73,903
<b>2023 White Collar Workers</b>	65%	67.5%	64.8%	65.2%
<b>Age 25+ W/HS Degree or Higher</b>	24.1%	23%	24.1%	23%
<b>Labor Daytime Population</b>	5,584	20,299	69,163	139,179