



150 N 2ND ST

MOUNTAIN HOME, ID 83647 | RETAIL/OFFICE SPACES FOR LEASE

MOSES MUKENGEZI
208.947.0836
moses@tokcommercial.com

HOLLY CHETWOOD, CCIM
208.947.0827
holly@tokcommercial.com

CONTACT



HIGHLIGHTS



- Prime Main Street location with strong visibility
- Retail space available for lease in the heart of downtown
- Recently refreshed exterior updates
- Flexible layout suitable for retail, boutique, or service users
- Surrounded by established local businesses and community amenities
- Convenient access and nearby street parking for customers

| SPACE | RSF | RATE |
|--------------|----------|---------------|
| 150 N. 2nd S | 2,186 SF | \$13.00 SF/yr |

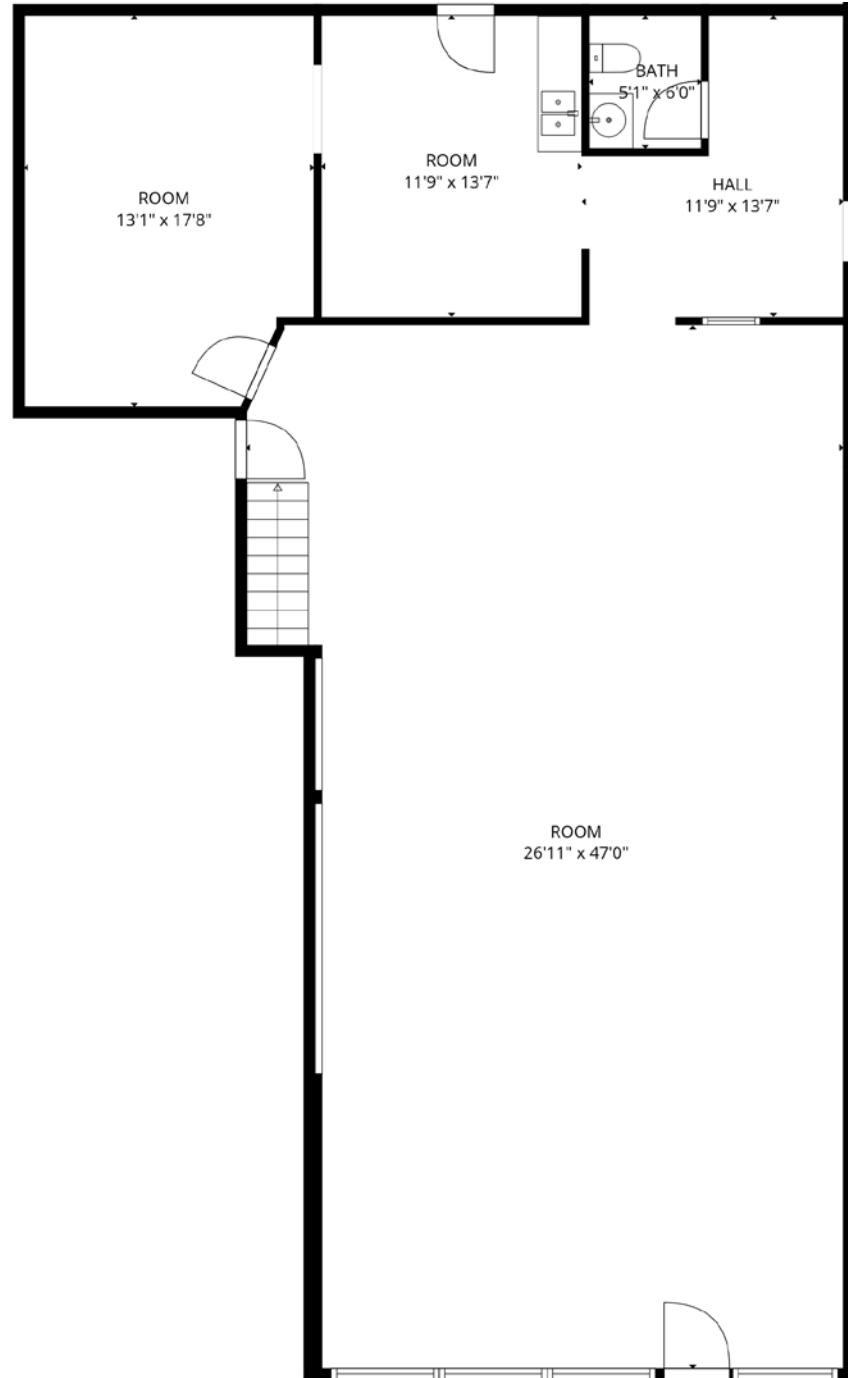
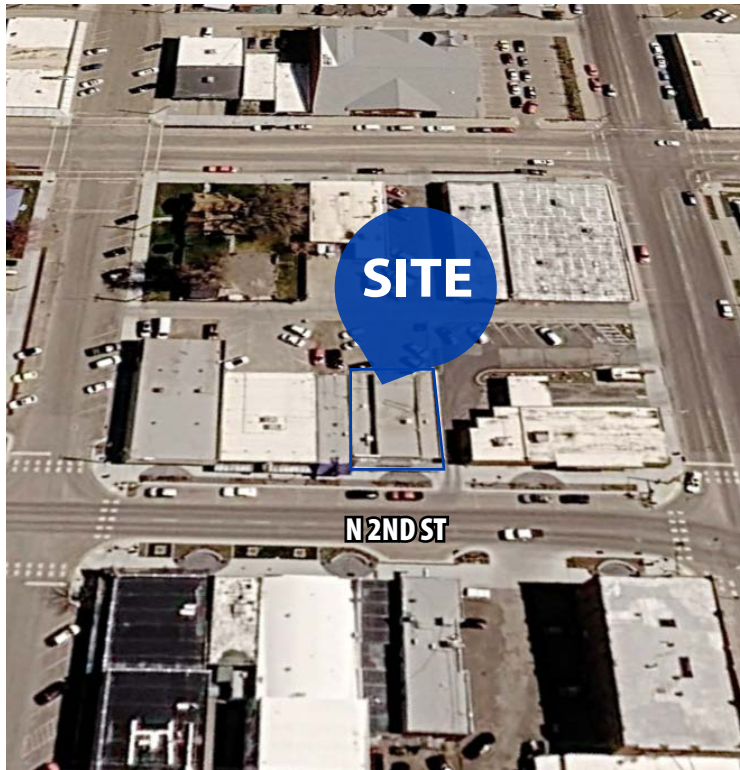
DETAILS



| | | | |
|------------------|---------------|-------------------|---------------|
| LOT SIZE | .138 Acres | ZONING | C2 |
| BLDG SIZE | 2,186 SF | LEASE TERM | 3-5 Yrs. |
| BLDG TYPE | Retail/Office | EST. NNN'S | Contact Agent |

FLOOR PLAN

| SPACE | RSF | RATE |
|--------------|----------|---------------|
| 150 N. 2nd S | 2,186 SF | \$13.00 SF/yr |





150 N 2ND ST

TOXCOMMERCIAL.COM

DEMOGRAPHICS

| | 1 Mi. | 3 Mi. | 5 Mi. |
|------------------------|----------|----------|----------|
| POPULATION: | 9,182 | 19,909 | 21,372 |
| AVG HH INCOME: | \$77,229 | \$82,112 | \$83,341 |
| EST. EMPLOYEES: | 7,272 | 15,579 | 16,707 |

44 Miles
to Boise

SITE

Downtown Mountain Home

11,229 VPD

AMERICAN LEGION BLVD

Mountain Home High School

AIRBASE RD

51

12,228 VPD

87 Miles
to Twin Falls

IDEAL LOCATION IN THE HEART OF MOUNTAIN HOME

150 N 2ND ST