



576 OLD CASSVILLE WHITE ROAD

Cartersville, Georgia 30121

FOR LEASE

SITE PLAN DATA:	
SITE AREA:	27.62± AC
CURRENT ZONING:	BPD(BUSINESS PARK DISTRICT)
FRONT SETBACK:	40 FEET
SIDE SETBACK:	15 FEET
REAR SETBACK:	20 FEET
MAX BUILDING HEIGHT 75 FEET	
BUFFERS:	
50 FEET ADJOINING:	ADJOINING WEST AND SOUTH PROPERTY LINE
BUILDING AREA:	
BUILDING 1:	230,50 SF
PARKING:	133 SP(AUTO)
PARKING:	46 SP(TRAILER)



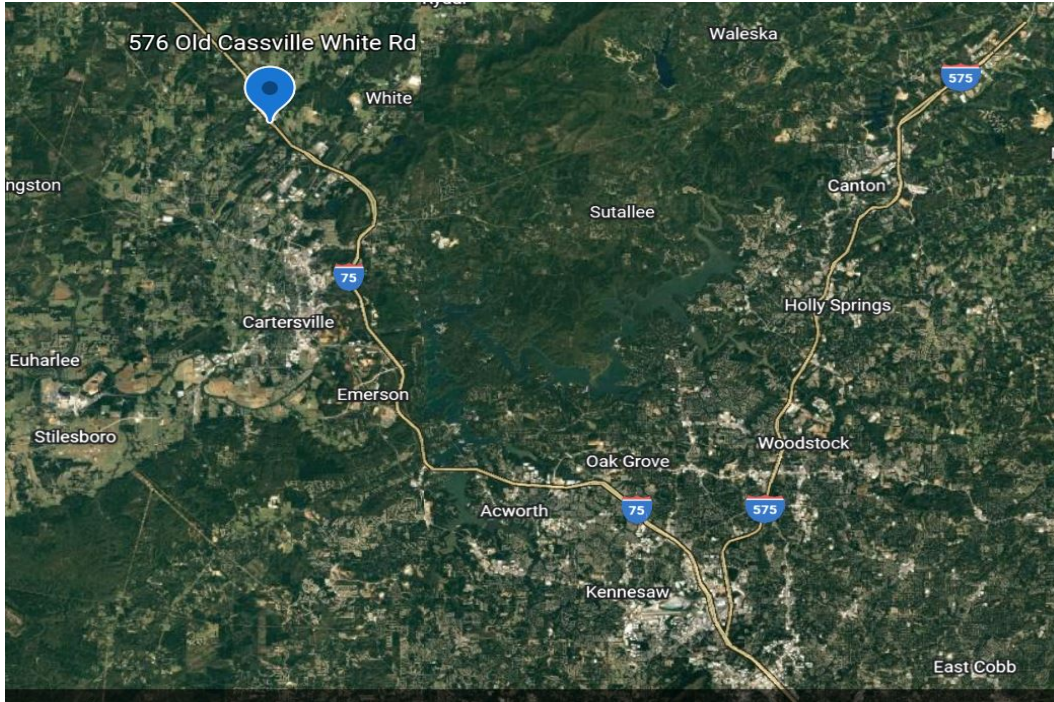
SQUARE FEET:	235,500 SF
CONFIGURATION:	Rear Load
LAND SIZE:	27.62 Acres
OFFICE SQUARE FEET:	Build to Suit
CLEAR HEIGHT:	36'
CONSTRUCTION TYPE:	Tilt Wall
COLUMN SPACING:	54' Wx 50' D (60' Speed Bays)
DOCK DOORS:	+/- 40
DRIVE-IN DOORS:	2

WINDOWS:	Clerestory
SPRINKLER:	ESFR
AUTO PARKING	133 spaces
TRAILER STALLS:	46 storage locations
TRUCK COURT DEPTH:	185' deep
FLOOR SLAB:	7"
VENTILATION:	3 air-changes per hour
POWER:	3 Phase, upgrades available



576 OLD CASSVILLE WHITE ROAD

Cartersville, Georgia 30121



NOTABLE DISTANCES

INTERMODAL

CSX FAIRBURN	67 MILES
NORFOLK SOUTHERN / INMAN	48 MILES
NORFOLK SOUTHERN / AUSTELL	39 MILES

INTERSTATE

I-75	1 MILE
I-285	38 MILES

AIR

HARTSFIELD JACKSON INTL AIRPORT	58 MILES
--	-----------------

PORTS

INLAND PORT CHATTSWORTH	52 MILES
SAVANNAH	298 MILES
CHARLESTON	388 MILES

For more information,
please contact:

RYAN BLACKBURN

Office: (404) 974-2716
Cell: (404) 821-7715
rblackburn@apexindustrialre.com

Although the information contained therein was provided from sources believed to be reliable, Apex Industrial makes no representation, expressed or implied, as to its accuracy and said information is subject to errors, omissions or changes.