



±2,200 SF OFFICE FOR SUBLEASE

Lease Rate:
\$7.67/SF NNN

157 Commons Way
Greenville, SC 29611

- Sublease - Expires January 2026
- 4 Offices
- 2 Restrooms
- Large conference room
- Open collaboration space on the second floor
- Ample Free Parking



**DOWNTOWN
ACCESS**
CLOSE PROXIMITY
TO DOWNTOWN



LOCATION
SURROUNDED BY
MULTIPLE RESTAU-
RANTS, SHOPPING
AND PERSONAL
SERVICES



LEE & ASSOCIATES
COMMERCIAL REAL ESTATE SERVICES

Darath Mackie
Vice President
dmackie@lee-associates.com

864.704.1040
LeeGreenville.com

PROPERTY OVERVIEW

PROPERTY NAME	White Horse Road Professional Park
TYPE	Office Condo
TOTAL BUILDING SF	Condo Unit is ±2,200 SF
TOTAL AVAILABLE SF	±2,200 SF
TAX MAP #	237040102600
COUNTY	Greenville
CITY LIMITS	No
ZONING	C-2
YEAR BUILT	2005
CONSTRUCTION TYPE	Masonry

ROOF	Shingle
PARKING	Ample On Site And Free
RESTROOMS	Yes
SUBMARKET	West Side Greenville
NUMBER OF OFFICES	4
CONFERENCE ROOM	Yes
BREAK ROOM	Yes
RECEPTION AREA	Yes
SHARED SPACE	No

PROPERTY SUMMARY

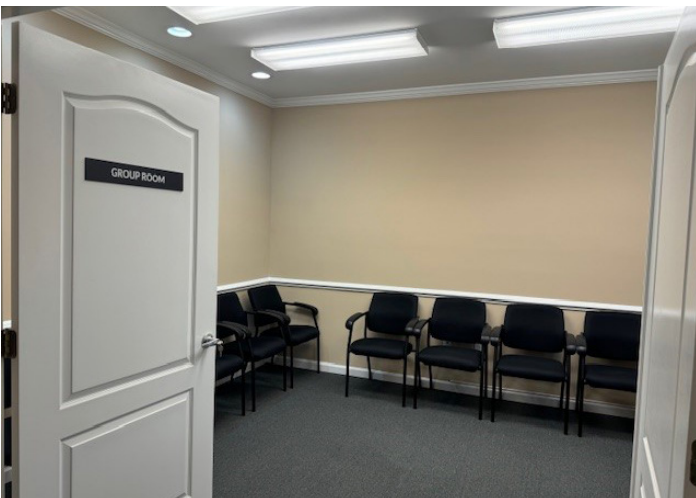
The property at 157 Commons Way, Greenville, SC 29611, is a ±2,200 square foot office space available for sublease. The sublease expires in January 2026. The space features four individual offices, two restrooms, a large conference room, and an open collaboration space on the second floor. The building provides ample free parking. The lease rate is \$7.67 per square foot on a triple net (NNN) basis.

Located in the White Horse Road Professional Park, the office is constructed with masonry and has a shingle roof. It falls under the C-2 zoning category and is situated in the West Side Greenville submarket. The property is not within city limits but is in close proximity to downtown Greenville, surrounded by various restaurants, shopping centers, and personal services.

The office building was constructed in 2005 and offers a break room and a reception area. The office condo is part of a professional park that includes ample on-site and free parking for tenants and visitors.



PROPERTY PHOTOS



LOCATION OVERVIEW

**Bank of
TRAVELERS REST**
SINCE 1946
Member FDIC


Applebee's
GRILL + BAR

Walmart 


ALDI



201 W. McBee Ave, Suite 100, Greenville, SC 29601
320 E. Main Street, Suite 430, Spartanburg, SC 29302
LeeGreenville.com | 864.704.1040



LEE & ASSOCIATES
COMMERCIAL REAL ESTATE SERVICES

864.704.1040
LeeGreenville.com

GREENVILLE OFFICE
201 W. McBee Ave, Suite 400
Greenville, SC 29601

SPARTANBURG OFFICE
320 E. Main Street, Suite 430
Spartanburg, SC 29302

All information furnished regarding the properties and information in this packet is from sources deemed reliable, but no warranty or representation is made to the accuracy thereof and same is submitted to errors, omissions, change of price, rental or other conditions prior to sale, lease or financing or withdrawal without notice. No liability of any kind is to be imposed on the broker herein.



LEARN MORE
GIVE ME A CALL



Darath Mackie
Vice President
864.337.1543
dmackie@lee-associates.com