

# 2.70 ACRES ZONED J2 | REDEVELOPMENT OPPORTUNITY

295 New York 25A | Mount Sinai, New York 11766

**FOR SALE**



Commercial





# EXECUTIVE SUMMARY

295 New York 25A | Mount Sinai, New York 11766

<b>Building Size:</b>	6,647 SF	<b>Lot Size:</b>	2.7 Acres
<b>Frontage:</b>	514 Feet	<b>Parking:</b>	Spaces
<b>Corner Property:</b>	Yes	<b>Zoning:</b>	J2
<b>Annual Taxes:</b>	\$24,072.00	<b>Sale Price:</b>	On Request

## Property Overview

Incredible and Rare Opportunity to Purchase this 2.70 Acres with a 6,647 SF Building strategically located on heavily traveled Route 25 A in Mount Sinai, NY. Ultimate Redevelopment Opportunity! Ideal for National Tenant or any Retailer/Professional or an Investor/Developer looking for maximum exposure in a sought-after neighborhood. Traffic counts exceed 40,000 vehicles passing this site daily. Mount Sinai is situated on the North Shore of Suffolk County just east of Port Jefferson Village, a year-round tourist destination and west of the popular North Fork of Long Island. The location is surrounded by Retail, Medical and Professional Office, as well as luxury residential homes, 55 + Older communities and brand-new developments. Less than 5 minutes to St. Charles and Mather Hospitals and 15 minutes to Stony Brook University and SBU Hospital. Tremendous Frontage, over 500 feet!

## Property Highlights

- 2.70 Acre Property in Prime Mount Sinai Location
- Zoned J2 For Flexible Retail/Office or Development Opportunity
- High Visibility On New York 25A | 514 Feet of Frontage
- 40,000 Vehicles Pass Each Day
- Strong Local Demographics and Consumer Base
- Potential To Develop a Multi-tenant Building for Diversified Income Streams

*Exclusively represented by:*

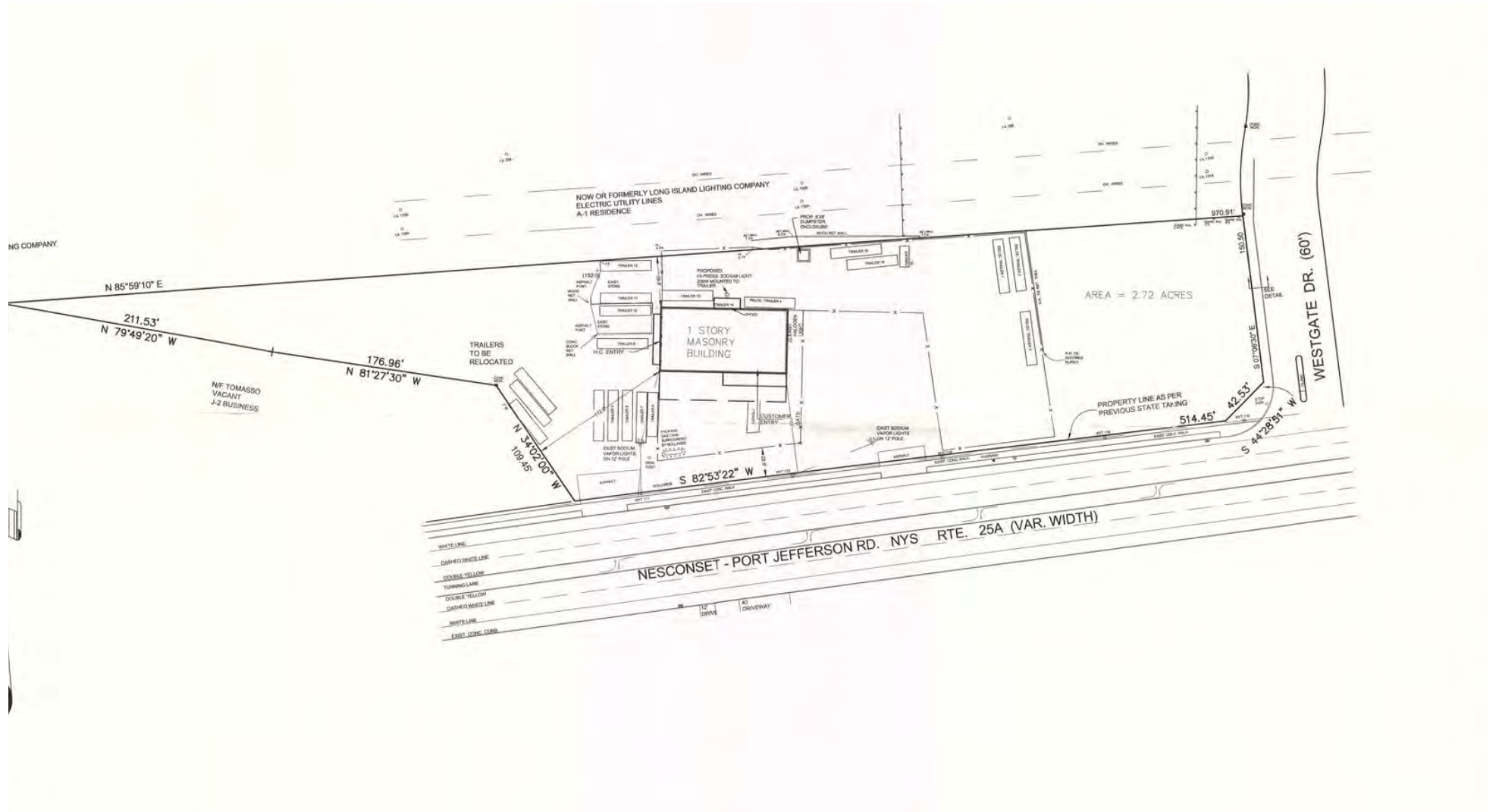
**Michael G. Murphy**

President | Commercial Division

631.858.2460 Email: michael.murphy@elliman.com

# PROPERTY SURVEY

295 New York 25A | Mount Sinai, New York 11766



Exclusively represented by:

**Michael G. Murphy**

President | Commercial Division

631.858.2460 Email: michael.murphy@elliman.com



# AERIAL VIEW OF PROPERTY

---

295 New York 25A | Mount Sinai, New York 11766



*Exclusively represented by:*

**Michael G. Murphy**

President | Commercial Division

631.858.2460 Email: [michael.murphy@elliman.com](mailto:michael.murphy@elliman.com)



# RETAILER + COMMUNITY MAP

295 New York 25A | Mount Sinai, New York 11766



Exclusively represented by:

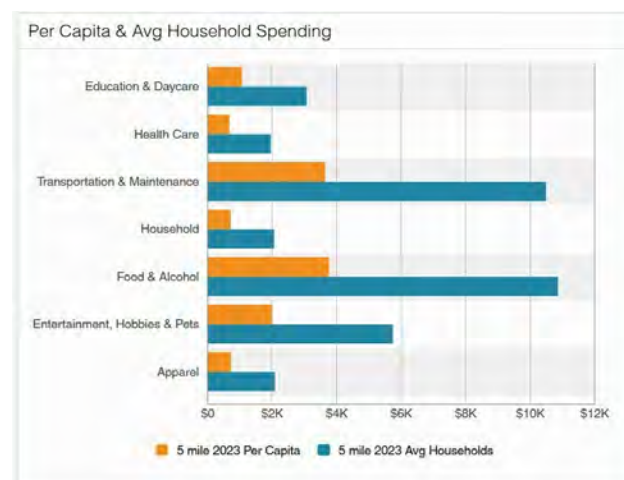
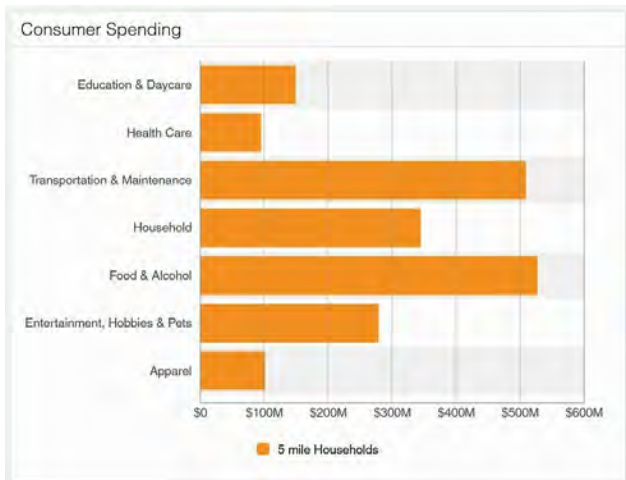
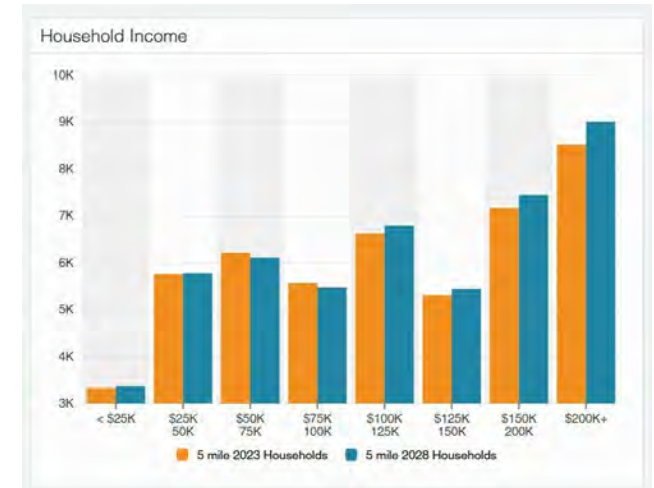
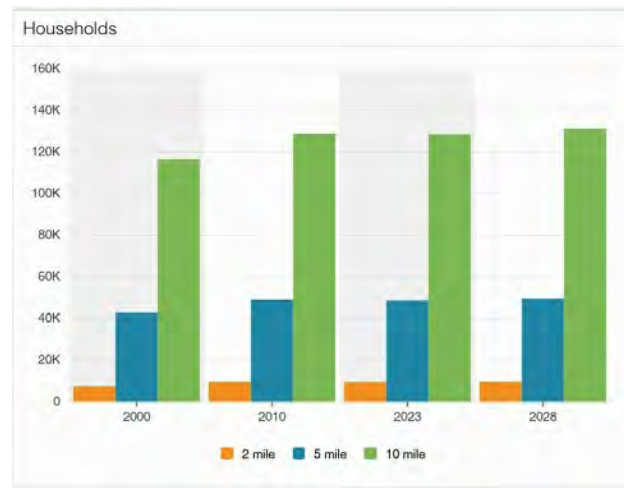
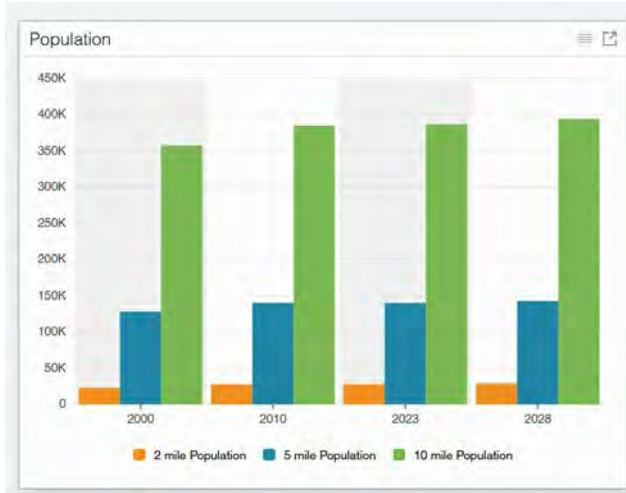
**Michael G. Murphy**

President | Commercial Division

631.858.2460 Email: michael.murphy@elliman.com

# PROPERTY DEMOGRAPHICS

295 New York 25A | Mount Sinai, New York 11766



## Demographic Snapshot: 1-5 Mile Radius

<b>Median Household Income</b>	\$150,869.00
<b>Median Home Value</b>	\$457,726.00
<b>Population</b>	139,884
<b>Households</b>	48,534
<b>Total Consumer Spending</b>	\$3+ Billion

Exclusively represented by:

**Michael G. Murphy**

President | Commercial Division

631.858.2460 Email: michael.murphy@elliman.com



Exclusively Represented By:



**Michael G. Murphy**

President | Commercial Division

michael.murphy@elliman.com

Direct: 631.858.2460 | Cell: 631.834.2626



## Professional Background

Michael G. Murphy is the President & Head of Operations of Douglas Elliman Real Estate's Commercial Division, a leading full-service commercial brokerage firm. In addition to his role overseeing the day-to-day operations of the multibillion-dollar Commercial office, Michael also sits on the Senior Executive Advisory Board at Elliman, one of the leading real estate firms in the world. In his innumerable roles Michael is responsible for strategic planning and the company's day-to-day commercial operations that involves overseeing more than 100 offices spanning across the five boroughs. He plays a pivotal role in the recruitment of top talent, business development, and integrating the company's real estate brokerage activities with project management and facilities management.

A trendsetter in the world of real estate, Murphy is responsible for the inception of a full-service commercial real estate division at Douglas Elliman. In 2003, it was Michael who shaped the idea of a commercial unit to take advantage of the referrals that were filtering out of the company's residential offices. Since its commencement, Michael has developed an exceptional referral base of loyal clients, completing in excess of a billion dollars in real estate transactions which include Hotels, Shopping centers, Triple Net opportunities, Land deals, several noteworthy office/ industrial leases and retail developments with national chains. Having represented some of the most recognized names in the Real Estate and Business arena, Michael brings a depth of knowledge to the Commercial Division that is second to none.

A self-starter, creative problem solver and an expert negotiator, Murphy has proven to be a trailblazer and is an iconic figure in the business industry. Prior to joining Douglas Elliman, he was a managing principal at Global Commercial Realty. He also co-owned and operated the "Dublin" Group, a chain of successful restaurant/bars throughout the Long Island area including Dublin Down, Dublin Over, Dublin Deck, Planet Dublin, Murphy's Law, Venue 56, as well as his newest venture in the hospitality, Industry Prato 850, A Gastro Pub, and hot spot in Commack.

In 2007 Michael was a recipient of Long Islands Prestigious 40 under 40 award, which is given to outstanding members of the business community who are under the age of 40. For well over a decade Michael has consistently been honored with numerous TOP Broker awards such as the Pinnacle Award, Platinum award and has consecutively been presented with the Award for # 1 Commercial Broker for GCI and Transactions within the Elliman network. Michael was also the Recipient of the CoStar Power Broker Award in 2016, 2017, 2018 and 2019 and was honored as Long Island Business News Top Commercial Broker for 2017.

Michael has an extensive academic background receiving his MBA in International Business from Franklin College, in Lugano Switzerland where he was selected from an elite group of scholars to participate in a one year accelerated program after first receiving his B.A. from CW Post Long Island University, where he played football on scholarship.

His professional affiliations include Commercial Industry Brokers Society of Long Island (CIBS), International Council of Shopping Centers (ICSC), Long Island Commercial Network (LICN) and LIBI. He participates in several philanthropic activities donating both time and financial aid to various charities including the Sunshine Kids, American Heart Association, Toys for Tots, St. Jude, All Inclusive Lacrosse and more.

*Exclusively represented by:*

**Michael G. Murphy**

President | Commercial Division

631.858.2460 Email: michael.murphy@elliman.com



## **We Are Commercial Real Estate**

550 Smithtown Bypass Suite 117  
Smithtown, NY 11787  
631.858.2405  
ellimancommercial.com

Commercial real estate involves more than just property listings. To get the most effective results, you need to partner with a company that has a full complement of services and an in-depth team of professionals to help with all your needs. Douglas Elliman's team of commercial real estate experts is committed to unrivaled performance standards when working with tenants, investors, purchasers and owners. We represent all major property types including office, industrial, retail, apartment and land. We treat each assignment with commitment and focus, from a single transaction in a local market to national and multi-market assignments. We help negotiate contracts, coordinate construction and provide both property management as well as ongoing advisory service to satisfy your changing real estate needs. Our breadth of market knowledge, unprecedented network and use of innovative technology extend to all types of property transactions. For information on our services please contact us today.



# ADDITIONAL PHOTOS

295 New York 25A | Mount Sinai, New York 11766



*Exclusively represented by:*

**Michael G. Murphy**

President | Commercial Division

631.858.2460 Email: [michael.murphy@elliman.com](mailto:michael.murphy@elliman.com)