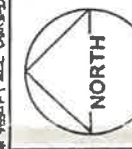
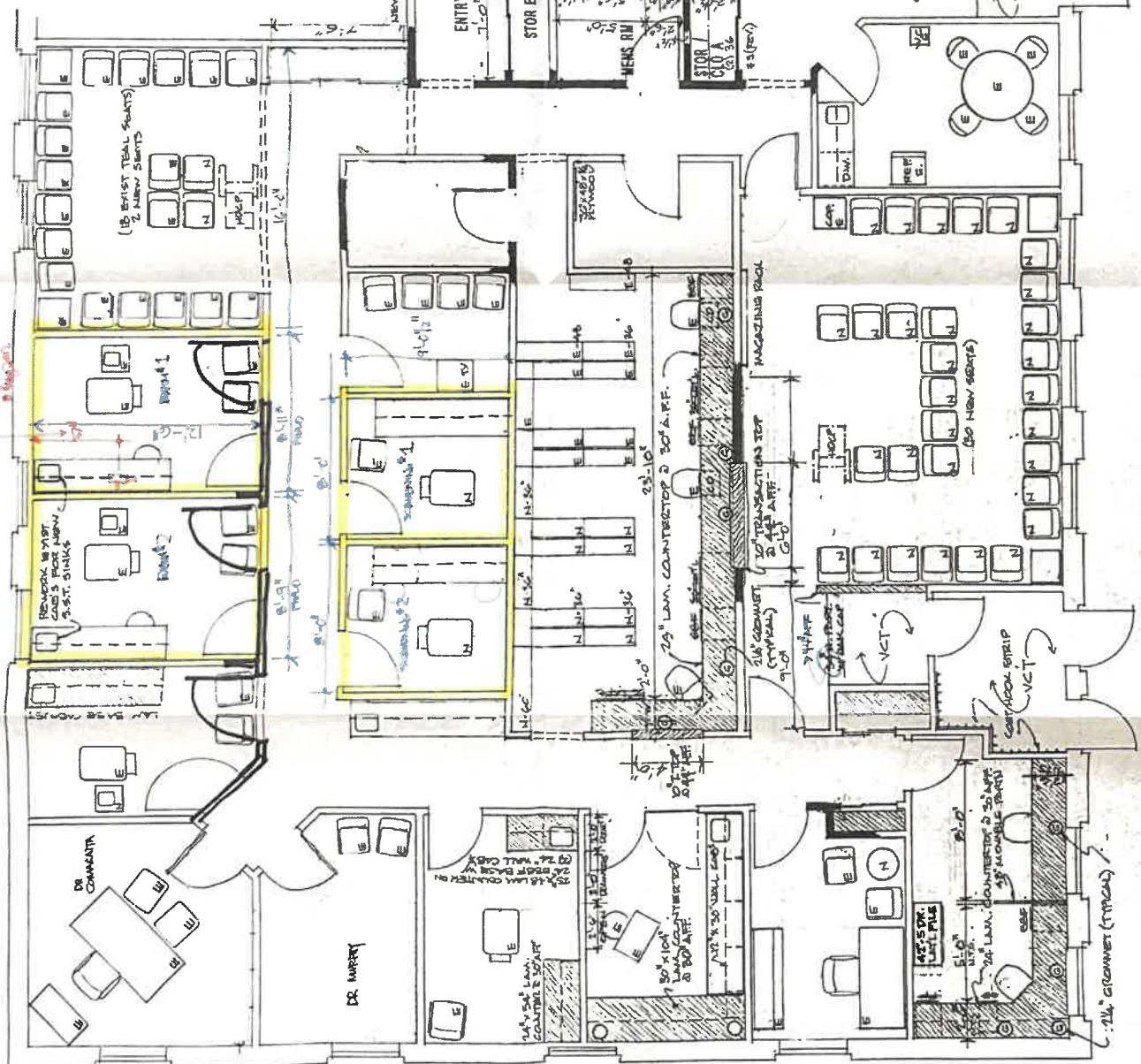
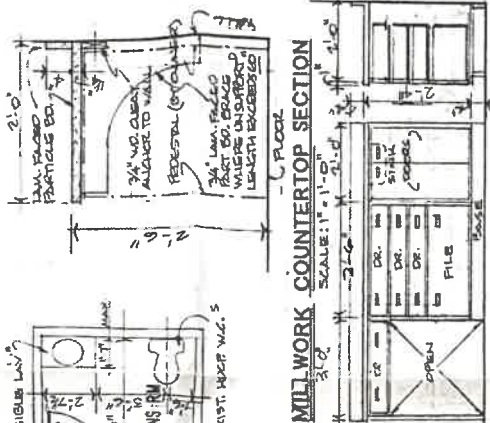
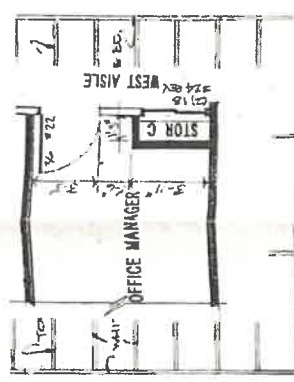


- (1) 1/2" thick floor slab
- (2) 1/2" thick floor slab
- (3) 1/2" thick floor slab
- (4) 1/2" thick floor slab
- (5) 1/2" thick floor slab
- (6) 1/2" thick floor slab
- (7) 1/2" thick floor slab
- (8) 1/2" thick floor slab
- (9) 1/2" thick floor slab
- (10) 1/2" thick floor slab
- (11) 1/2" thick floor slab
- (12) 1/2" thick floor slab
- (13) 1/2" thick floor slab
- (14) 1/2" thick floor slab
- (15) 1/2" thick floor slab
- (16) 1/2" thick floor slab
- (17) 1/2" thick floor slab
- (18) 1/2" thick floor slab
- (19) 1/2" thick floor slab
- (20) 1/2" thick floor slab
- (21) 1/2" thick floor slab
- (22) 1/2" thick floor slab
- (23) 1/2" thick floor slab
- (24) 1/2" thick floor slab
- (25) 1/2" thick floor slab
- (26) 1/2" thick floor slab
- (27) 1/2" thick floor slab
- (28) 1/2" thick floor slab
- (29) 1/2" thick floor slab
- (30) 1/2" thick floor slab
- (31) 1/2" thick floor slab
- (32) 1/2" thick floor slab
- (33) 1/2" thick floor slab
- (34) 1/2" thick floor slab
- (35) 1/2" thick floor slab
- (36) 1/2" thick floor slab
- (37) 1/2" thick floor slab
- (38) 1/2" thick floor slab
- (39) 1/2" thick floor slab
- (40) 1/2" thick floor slab
- (41) 1/2" thick floor slab
- (42) 1/2" thick floor slab
- (43) 1/2" thick floor slab
- (44) 1/2" thick floor slab
- (45) 1/2" thick floor slab
- (46) 1/2" thick floor slab
- (47) 1/2" thick floor slab
- (48) 1/2" thick floor slab
- (49) 1/2" thick floor slab
- (50) 1/2" thick floor slab
- (51) 1/2" thick floor slab
- (52) 1/2" thick floor slab
- (53) 1/2" thick floor slab
- (54) 1/2" thick floor slab
- (55) 1/2" thick floor slab
- (56) 1/2" thick floor slab
- (57) 1/2" thick floor slab
- (58) 1/2" thick floor slab
- (59) 1/2" thick floor slab
- (60) 1/2" thick floor slab
- (61) 1/2" thick floor slab
- (62) 1/2" thick floor slab
- (63) 1/2" thick floor slab
- (64) 1/2" thick floor slab
- (65) 1/2" thick floor slab
- (66) 1/2" thick floor slab
- (67) 1/2" thick floor slab
- (68) 1/2" thick floor slab
- (69) 1/2" thick floor slab
- (70) 1/2" thick floor slab
- (71) 1/2" thick floor slab
- (72) 1/2" thick floor slab
- (73) 1/2" thick floor slab
- (74) 1/2" thick floor slab
- (75) 1/2" thick floor slab
- (76) 1/2" thick floor slab
- (77) 1/2" thick floor slab
- (78) 1/2" thick floor slab
- (79) 1/2" thick floor slab
- (80) 1/2" thick floor slab
- (81) 1/2" thick floor slab
- (82) 1/2" thick floor slab
- (83) 1/2" thick floor slab
- (84) 1/2" thick floor slab
- (85) 1/2" thick floor slab
- (86) 1/2" thick floor slab
- (87) 1/2" thick floor slab
- (88) 1/2" thick floor slab
- (89) 1/2" thick floor slab
- (90) 1/2" thick floor slab
- (91) 1/2" thick floor slab
- (92) 1/2" thick floor slab
- (93) 1/2" thick floor slab
- (94) 1/2" thick floor slab
- (95) 1/2" thick floor slab
- (96) 1/2" thick floor slab
- (97) 1/2" thick floor slab
- (98) 1/2" thick floor slab
- (99) 1/2" thick floor slab
- (100) 1/2" thick floor slab



FURNITURE & EQUIPMENT PLAN	
SCALE: 1/4" = 1'-0"	APPROVED BY: J. E. P.
DATE: 08 MAR 02	DESIGNED BY: J. E. P.
MARK COMARATTA M.D. P.C.	
DRAWING NUMBER: A - 3	