



# 215

**EAST 94<sup>TH</sup> STREET**  
BETWEEN SECOND &  
THIRD AVENUES



**CBRE**

**FLOOR****SIZE****4<sup>TH</sup>****4,500 SF****3<sup>RD</sup>****4,500 SF****2<sup>ND</sup>****1,125 SF****1<sup>ST</sup>****4,500 SF****LOWER****4,500 SF**

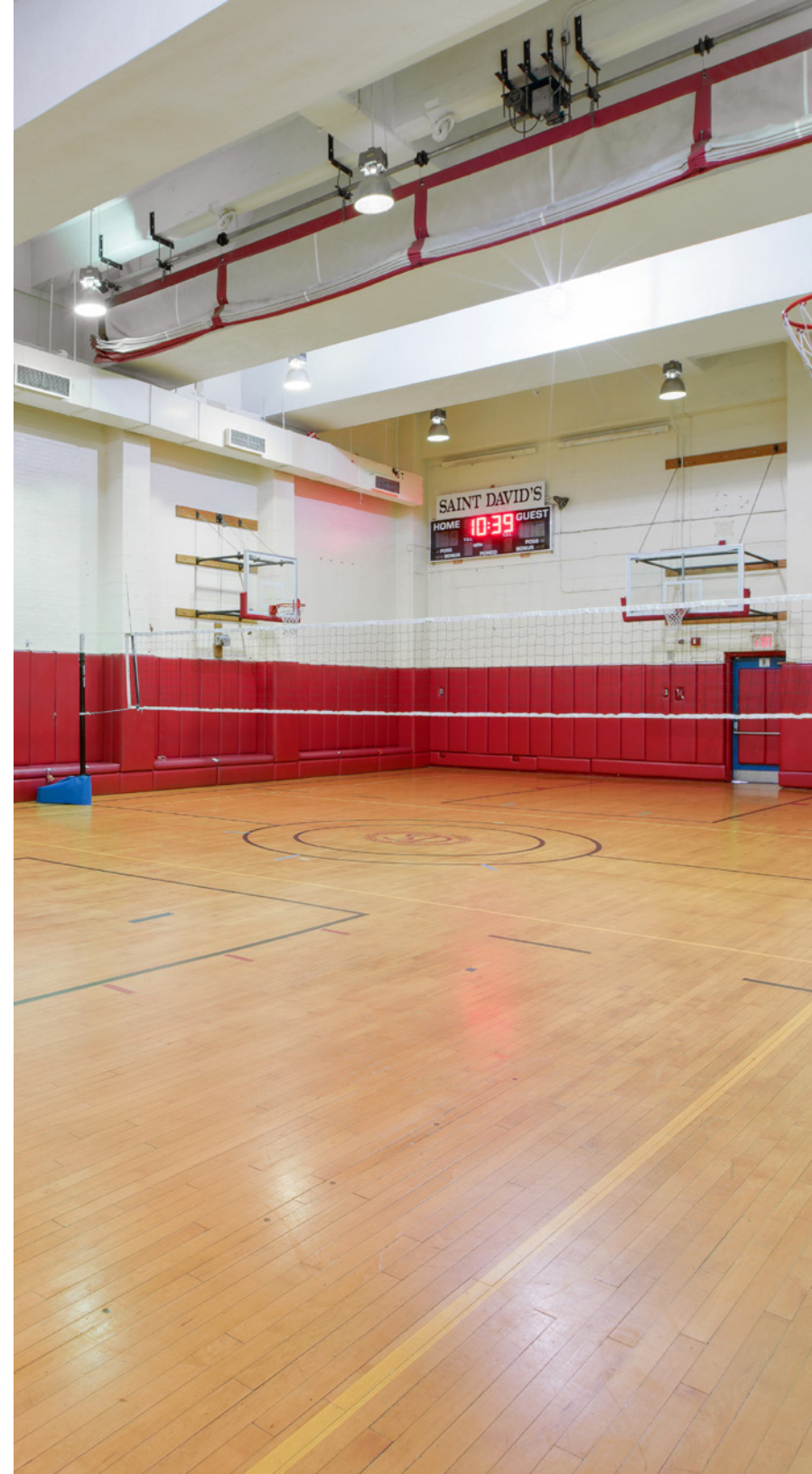
---

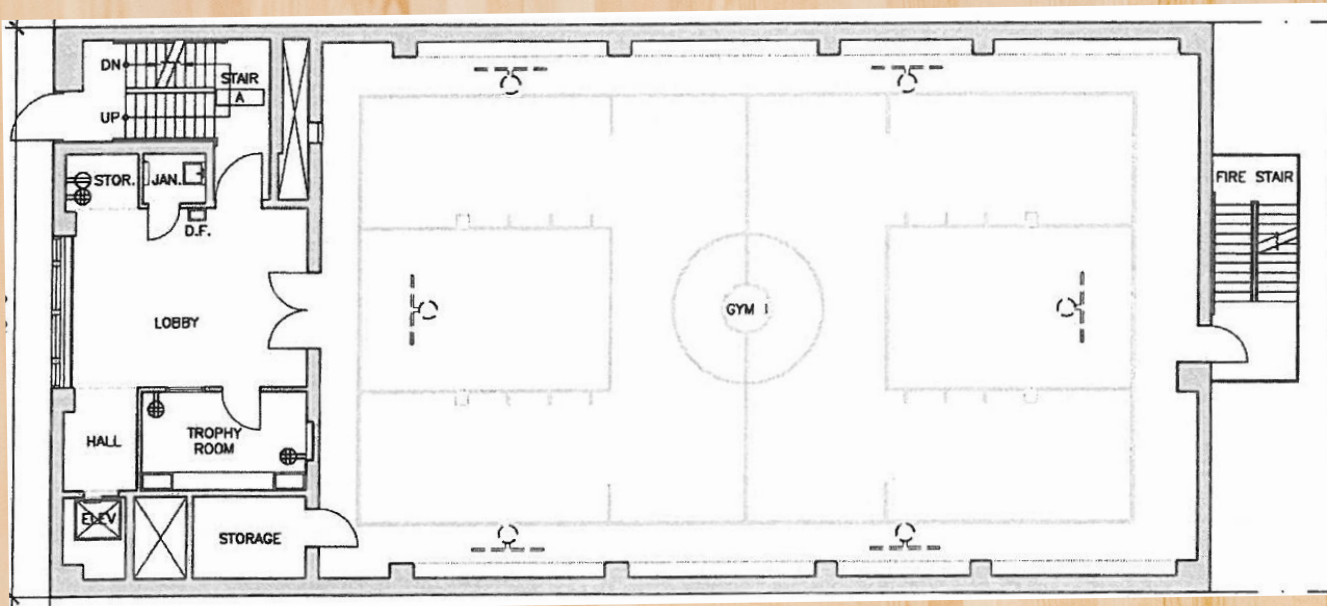
**TOTAL****19,125 SF****POSSESSION****TERM**

Negotiable

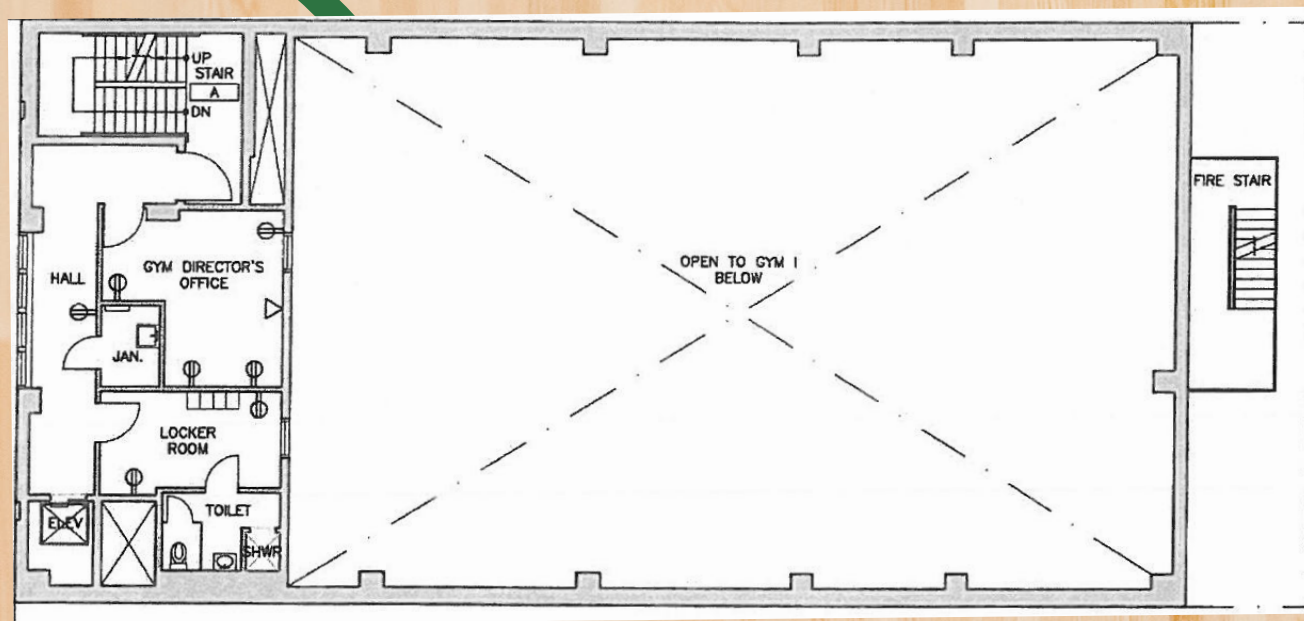
Long Term

- Rare column free building on the Upper East Side
- Currently used as a school gymnasium with multiple full-size basketball courts
- Usable roof top
- Located near many private schools such as Trevor Day, Dalton, Windward, Saint Bernard's, Sacred Heart, Spence, Nightingale, among others

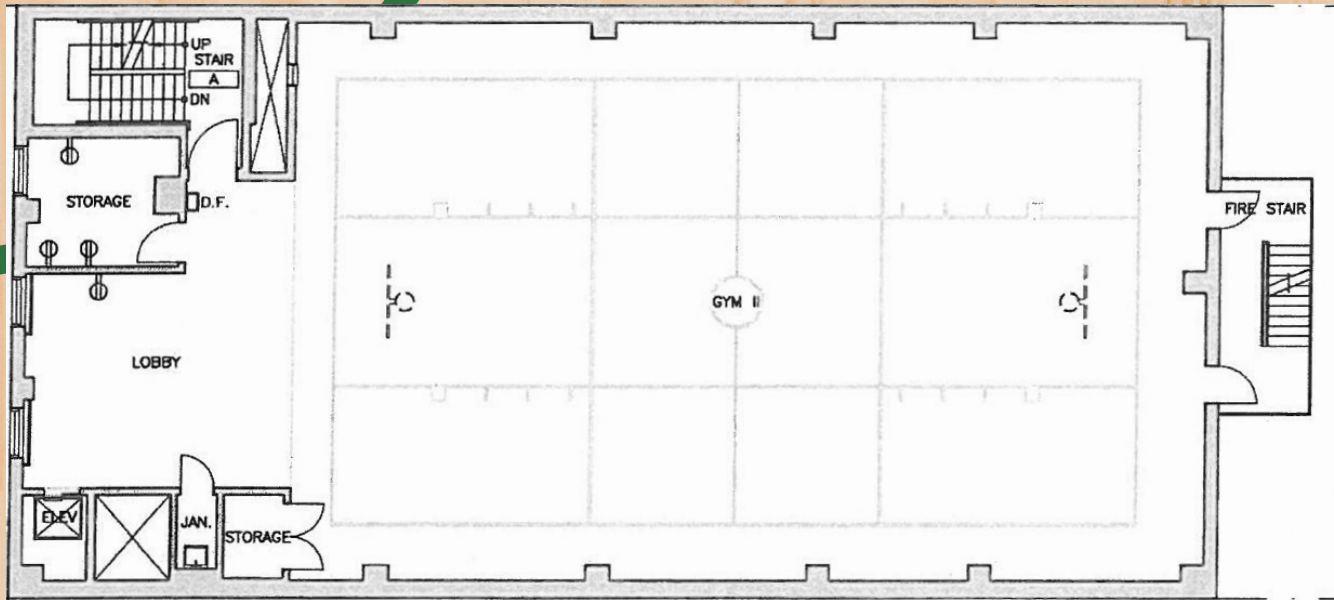




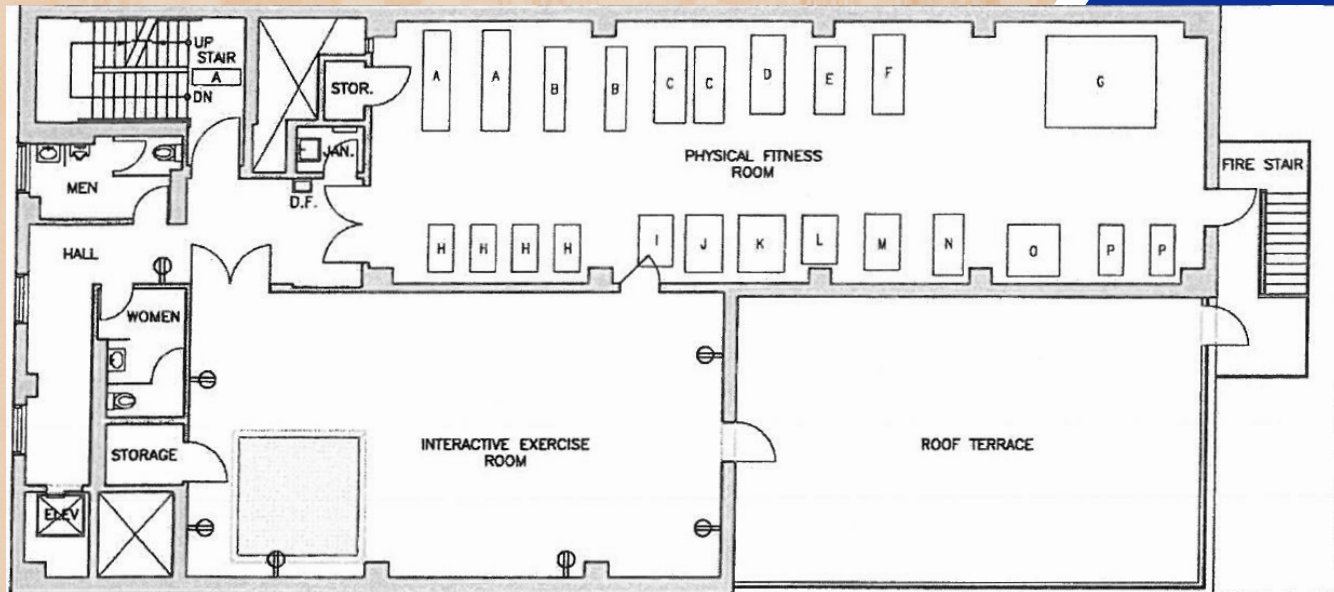
**1<sup>ST</sup> FLOOR  
4,500 SF**



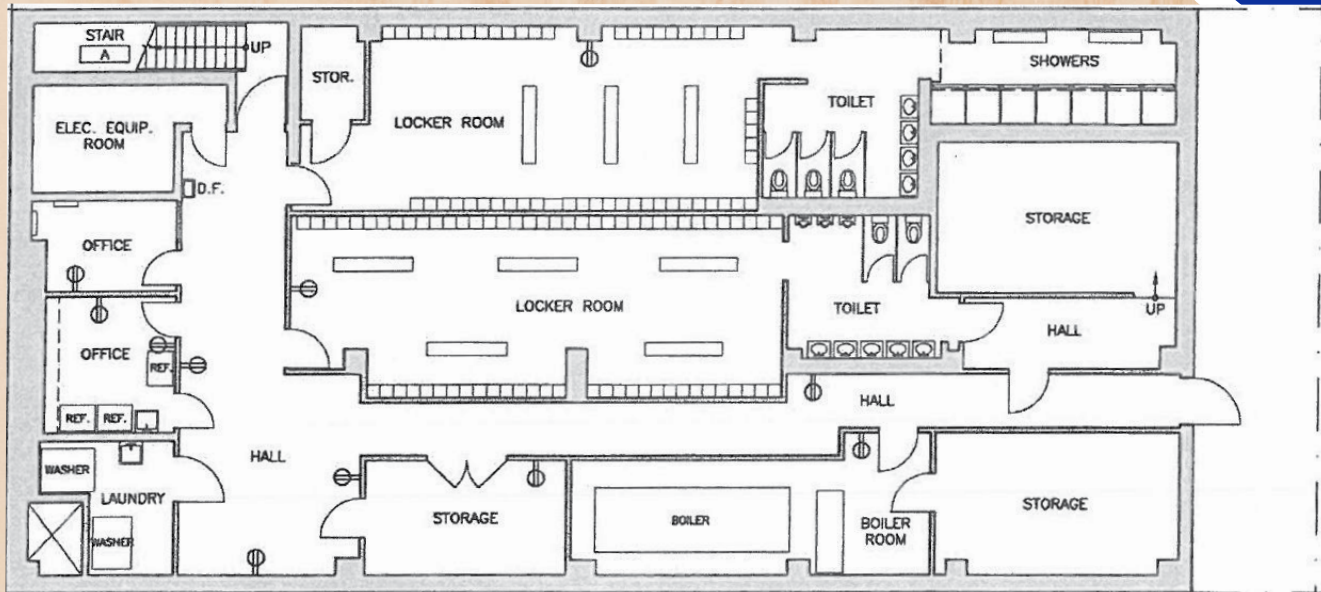
**2<sup>ND</sup> FLOOR  
1,125 SF**



**3<sup>RD</sup> FLOOR  
4,500 SF**



**4<sup>TH</sup> FLOOR  
4,500 SF**



**LOWER LEVEL  
4,500 SF**



**Michael Kadosh**  
212.984.7113  
Michael.Kadosh@cbre.com

**Lon Rubackin**  
212.984.8195  
Lon.Rubackin@cbre.com

**Bevan Cohen**  
212.895.0945  
Bevan.Cohen@cbre.com

© 2023 CBRE, Inc. All rights reserved. This information has been obtained from sources believed reliable, but has not been verified for accuracy or completeness. You should conduct a careful, independent investigation of the property and verify all information. Any reliance on this information is solely at your own risk. CBRE and the CBRE logo are service marks of CBRE, Inc. All other marks displayed on this document are the property of their respective owners, and the use of such logos does not imply any affiliation with or endorsement of CBRE.

