

4,153 - 8,062 SF RETAIL/OFFICE/MEDICAL



FOR LEASE



Orion Marketplace

1176-1234 S Lapeer Rd
Lake Orion, Michigan 48360

Property Highlights

- Spaces Ready-to-Go for Restaurant, Retail, Office or Medical Office
- Located on Lapeer Road, a Regional Corridor and One of the Most Highly Traveled Roads in the North Oakland County
- New Meijer Concept Across the Street Now Open
- Recently Updated with New Roof and New HVAC Units!
- TI Packages Available
- Brand New Monument Sign with Strong Traffic Counts on Lapeer Rd: 44,897 CPD



NAI Farbman

Commercial Real Estate Services, Worldwide.

www.naifarbman.com

Gavin Mills

Leasing and Sales Associate | 908.304.4534
mills@farbman.com

Brandon Ben-Ezra

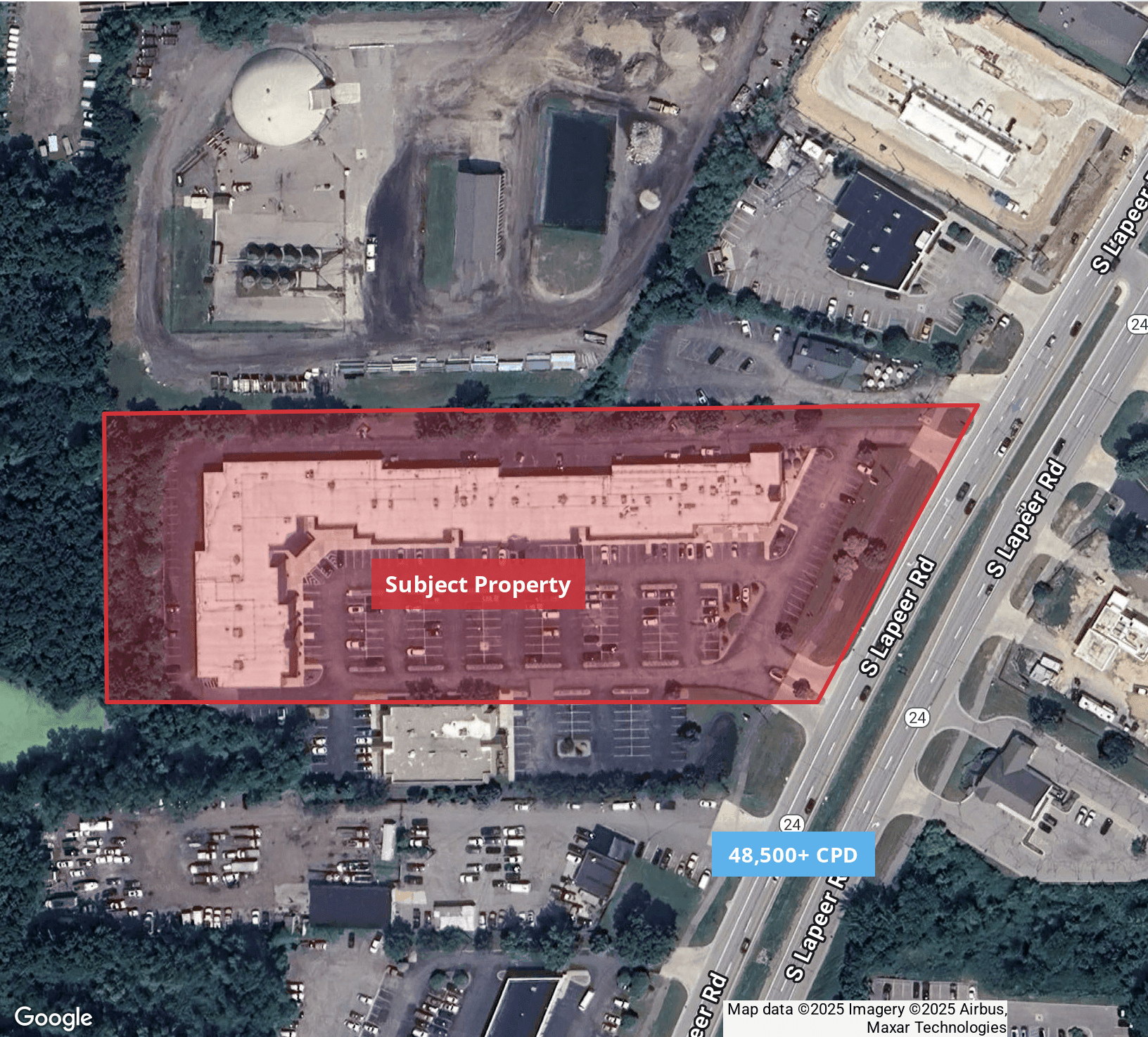
Vice President | 947.517.6226
ben-ezra@farbman.com

NO WARRANTY, EXPRESS OR IMPLIED, IS MADE AS TO THE ACCURACY OF THE INFORMATION CONTAINED HEREIN. THIS INFORMATION IS SUBMITTED SUBJECT TO ERRORS, OMISSIONS, CHANGE OF PRICE, RENTAL OR OTHER CONDITIONS, WITHDRAWAL WITHOUT NOTICE, AND IS SUBJECT TO ANY SPECIAL LISTING CONDITIONS IMPOSED BY OUR PRINCIPALS, COOPERATING BROKERS, BUYERS, TENANTS AND OTHER PARTIES WHO RECEIVE THIS DOCUMENT SHOULD NOT RELY ON IT, BUT SHOULD USE IT AS A STARTING POINT OF ANALYSIS, AND SHOULD INDEPENDENTLY CONFIRM THE ACCURACY OF THE INFORMATION CONTAINED HEREIN THROUGH A DUE DILIGENCE REVIEW OF THE BOOKS, RECORDS, FILES AND DOCUMENTS THAT CONSTITUTE RELIABLE SOURCES OF THE INFORMATION DESCRIBED HEREIN. LOGOS ARE FOR IDENTIFICATION PURPOSES ONLY AND MAY BE TRADEMARKS OF THEIR RESPECTIVE COMPANIES. NAI Farbman, INC. CA BRE LIC. #01990696.

4,153 - 8,062 SF
RETAIL/OFFICE/MEDICAL



FOR LEASE



Subject Property

48,500+ CPD

Map data ©2025 Imagery ©2025 Airbus,
Maxar Technologies



Commercial Real Estate Services, Worldwide.

www.naifarbman.com

Gavin Mills

Leasing and Sales Associate | 908.304.4534
mills@farbman.com

Brandon Ben-Ezra

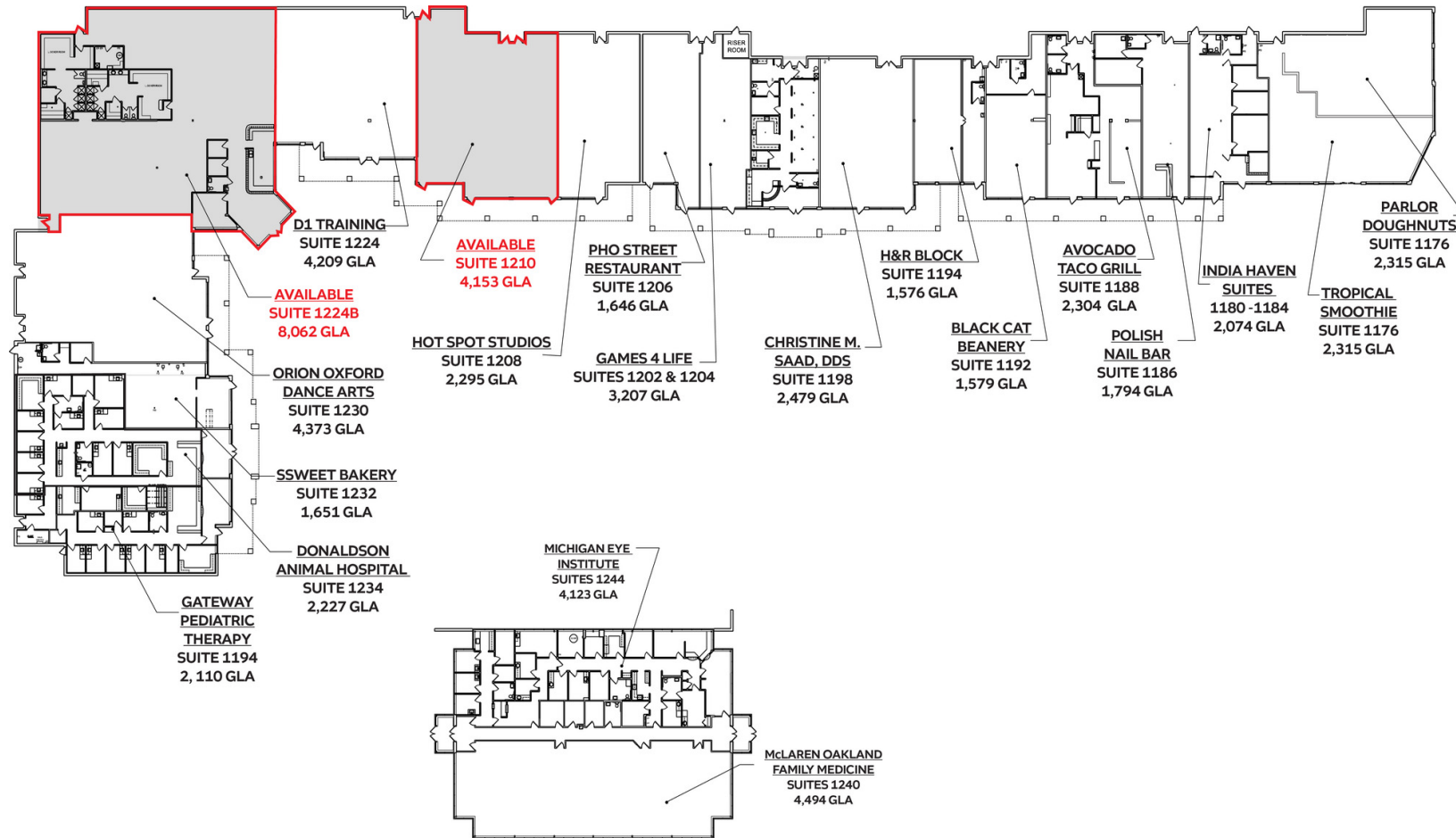
Vice President | 947.517.6226
ben-ezra@farbman.com

NO WARRANTY, EXPRESS OR IMPLIED, IS MADE AS TO THE ACCURACY OF THE INFORMATION CONTAINED HEREIN. THIS INFORMATION IS SUBMITTED SUBJECT TO ERRORS, OMISSIONS, CHANGE OF PRICE, RENTAL OR OTHER CONDITIONS, WITHDRAWAL WITHOUT NOTICE, AND IS SUBJECT TO ANY SPECIAL LISTING CONDITIONS IMPOSED BY OUR PRINCIPALS. COOPERATING BROKERS, BUYERS, TENANTS AND OTHER PARTIES WHO RECEIVE THIS DOCUMENT SHOULD NOT RELY ON IT, BUT SHOULD USE IT AS A STARTING POINT OF ANALYSIS, AND SHOULD INDEPENDENTLY CONFIRM THE ACCURACY OF THE INFORMATION CONTAINED HEREIN THROUGH A DUE DILIGENCE REVIEW OF THE BOOKS, RECORDS, FILES AND DOCUMENTS THAT CONSTITUTE RELIABLE SOURCES OF THE INFORMATION DESCRIBED HEREIN. LOGOS ARE FOR IDENTIFICATION PURPOSES ONLY AND MAY BE TRADEMARKS OF THEIR RESPECTIVE COMPANIES. NAI Farbman, INC. CA BRE LIC. #01990696.

4,153 - 8,062 SF RETAIL/OFFICE/MEDICAL



FOR LEASE



ORION MARKETPLACE 1176-1244 S. LAPEER RD, LAKE ORION MASTER PLAN



6-7-22

NOT TO SCALE

PREPARED BY METRO CAD GROUP



Commercial Real Estate Services, Worldwide.

www.naifarbman.com

Gavin Mills

Leasing and Sales Associate | 908.304.4534
mills@farbman.com

Brandon Ben-Ezra

Vice President | 947.517.6226
ben-ezra@farbman.com

NO WARRANTY, EXPRESS OR IMPLIED, IS MADE AS TO THE ACCURACY OF THE INFORMATION CONTAINED HEREIN. THIS INFORMATION IS SUBMITTED SUBJECT TO ERRORS, OMISSIONS, CHANGE OF PRICE, RENTAL OR OTHER CONDITIONS, WITHDRAWAL WITHOUT NOTICE, AND IS SUBJECT TO ANY SPECIAL LISTING CONDITIONS IMPOSED BY OUR PRINCIPALS, COOPERATING BROKERS, BUYERS, TENANTS AND OTHER PARTIES WHO RECEIVE THIS DOCUMENT SHOULD NOT RELY ON IT, BUT SHOULD USE IT AS A STARTING POINT OF ANALYSIS, AND SHOULD INDEPENDENTLY CONFIRM THE ACCURACY OF THE INFORMATION CONTAINED HEREIN THROUGH A DUE DILIGENCE REVIEW OF THE BOOKS, RECORDS, FILES AND DOCUMENTS THAT CONSTITUTE RELIABLE SOURCES OF THE INFORMATION DESCRIBED HEREIN. LOGOS ARE FOR IDENTIFICATION PURPOSES ONLY AND MAY BE TRADEMARKS OF THEIR RESPECTIVE COMPANIES. NAI Farbman, INC. CA BRE LIC. #01990696.

4,153 - 8,062 SF RETAIL/OFFICE/MEDICAL



FOR LEASE

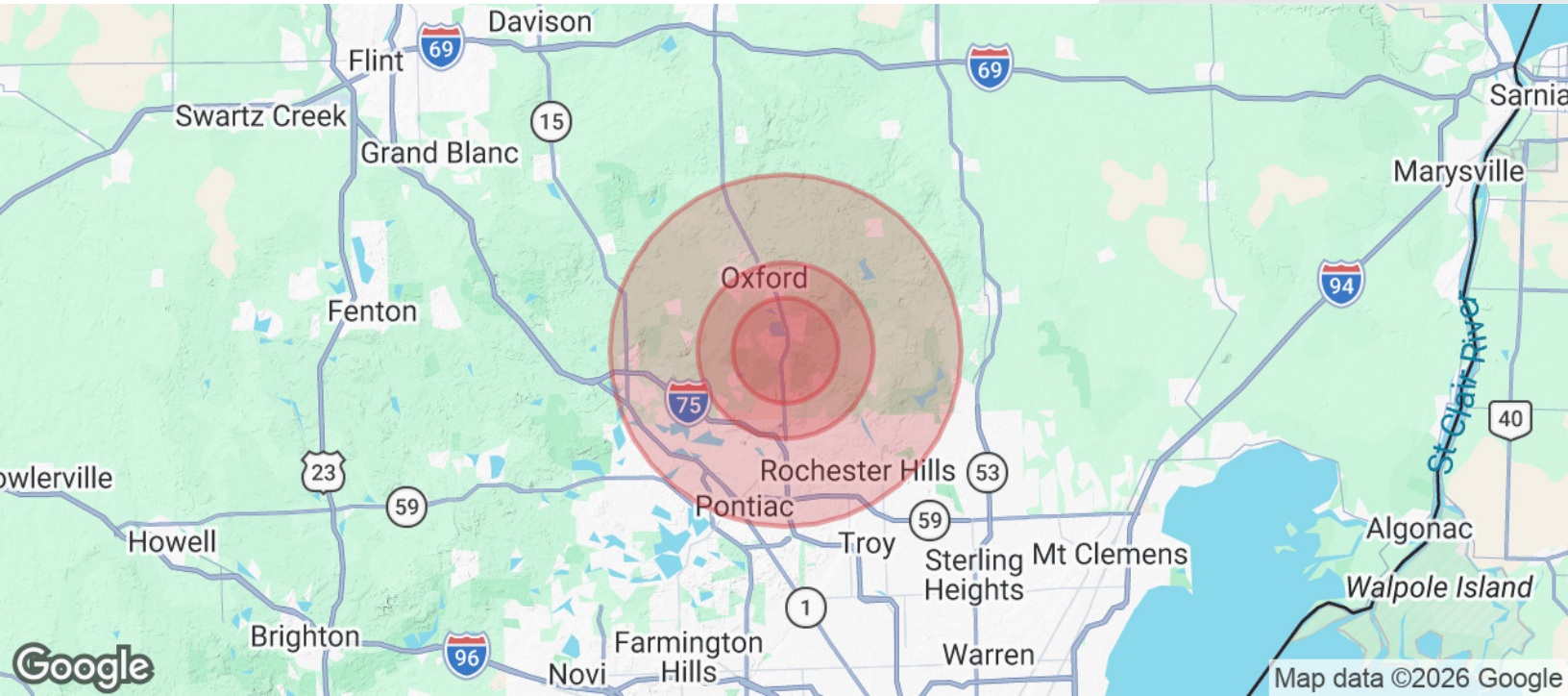


Map data ©2023 Imagery ©2023, Airbus, CNES / Airbus, Landsat / Copernicus, Maxar Technologies, U.S. Geological Survey, USDA/FPAC/GEO

4,153 - 8,062 SF RETAIL/OFFICE/MEDICAL



FOR LEASE



POPULATION

	3 MILES	5 MILES	10 MILES
Total Population	29,184	72,730	325,001
Average Age	37.1	37.5	37.1
Average Age (Male)	35.0	36.2	36.1
Average Age (Female)	38.3	38.5	37.9

HOUSEHOLDS & INCOME

	3 MILES	5 MILES	10 MILES
Total Households	10,329	23,602	113,142
# of Persons per HH	2.69	2.73	2.56
Average HH Income	\$132,303	\$139,157	\$109,369
Average House Value	\$283,096	\$300,068	\$258,619

* Demographic data derived from 2020 ACS - US Census



Commercial Real Estate Services, Worldwide.

www.naifarbman.com

Gavin Mills

Leasing and Sales Associate | 908.304.4534
mills@farbman.com

Brandon Ben-Ezra

Vice President | 947.517.6226
ben-ezra@farbman.com

NO WARRANTY, EXPRESS OR IMPLIED, IS MADE AS TO THE ACCURACY OF THE INFORMATION CONTAINED HEREIN. THIS INFORMATION IS SUBMITTED SUBJECT TO ERRORS, OMISSIONS, CHANGE OF PRICE, RENTAL OR OTHER CONDITIONS, WITHDRAWAL WITHOUT NOTICE, AND IS SUBJECT TO ANY SPECIAL LISTING CONDITIONS IMPOSED BY OUR PRINCIPALS, COOPERATING BROKERS, BUYERS, TENANTS AND OTHER PARTIES WHO RECEIVE THIS DOCUMENT SHOULD NOT RELY ON IT, BUT SHOULD USE IT AS A STARTING POINT OF ANALYSIS, AND SHOULD INDEPENDENTLY CONFIRM THE ACCURACY OF THE INFORMATION CONTAINED HEREIN THROUGH A DUE DILIGENCE REVIEW OF THE BOOKS, RECORDS, FILES AND DOCUMENTS THAT CONSTITUTE RELIABLE SOURCES OF THE INFORMATION DESCRIBED HEREIN. LOGOS ARE FOR IDENTIFICATION PURPOSES ONLY AND MAY BE TRADEMARKS OF THEIR RESPECTIVE COMPANIES. NAI Farbman, INC. CA BRE LIC. #01990696.