

1610
ARDEN WAY
SACRAMENTO, CA



OFFICE SPACE FOR SUBLEASE

NEWMARK

JOHN ROTH // 530-277-3742 // john.roth@nmrk.com // CA DRE #: 01896375
COLE WATTS // 650-303-7675 // cole.watts@nmrk.com // CA DRE #: 02288895

PROPERTY HIGHLIGHTS



Suite 140: 1,325 SF



Asking rate of \$1.50 per square foot per month



Classic brick architecture with expansive window line and courtyard views



Professional Property Management and facilities engineer



Onsite fitness center with showers



Beautiful courtyard with shaded outdoor seating and outdoor water feature



Located within minutes of Sacramento's CBD



Onsite Cafe. Restaurants and retail services immediately adjacent to the property & short walk to Arden mall



Immediate freeway access to Business Hwy 80



Onsite security patrol



Onsite training & conference room

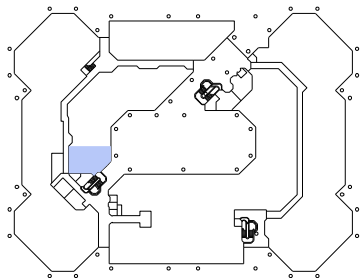
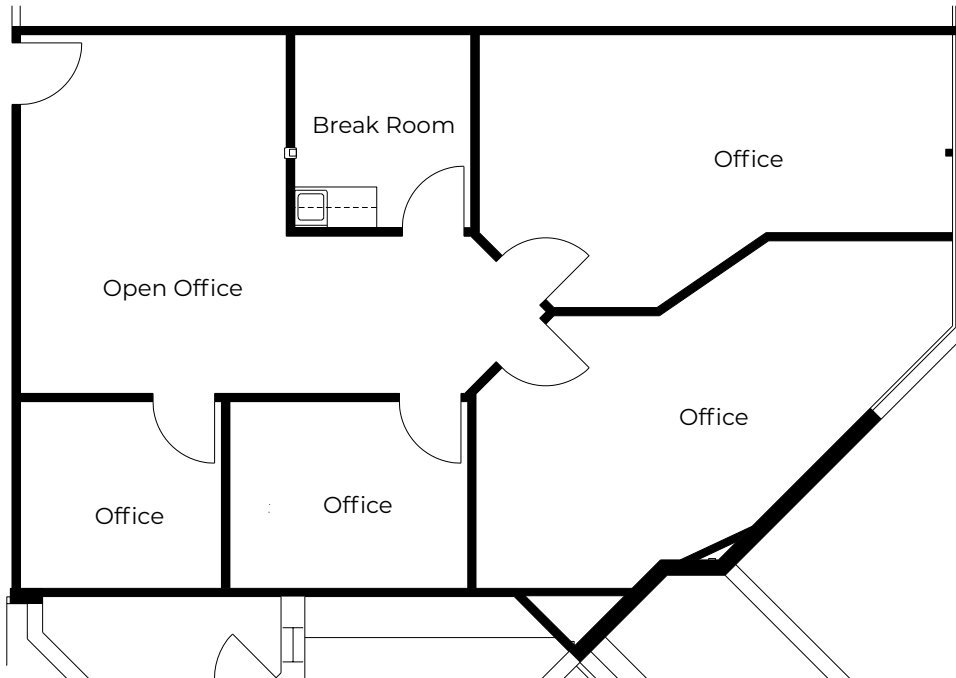
1610
ARDEN WAY
SACRAMENTO, CA



FLOOR PLAN

1610
ARDEN WAY
SACRAMENTO, CA

Suite 140: 1,325 SF





JOHN ROTH // 530-277-3742 // john.roth@nmrk.com // CA DRE #: 01896375
 COLE WATTS // 650-303-7675 // cole.watts@nmrk.com // CA DRE #: 02288895

NEWMARK

The distributor of this communication is performing acts for which a real estate license is required. The information contained herein has been obtained from sources deemed reliable but has not been verified and no guarantee, warranty or representation, either express or implied, is made with respect to such information. Terms of sale or lease and availability are subject to change or withdrawal without notice. 09/25