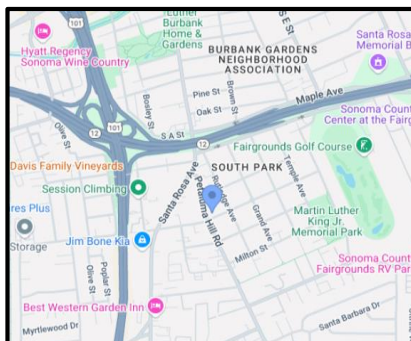
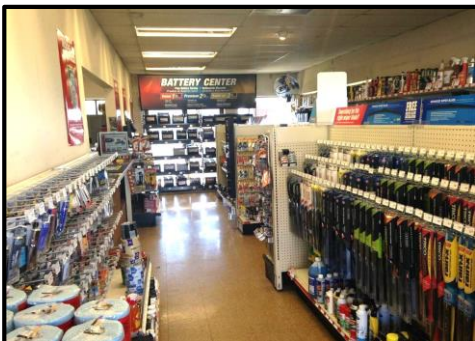


4,960 Sq. Ft. Freestanding Corner Retail

1038 Petaluma Hill Road | Santa Rosa | CA | 95404



Year Built: 1983
Building Size: +/- 4,960 SF
Construction: Steel Frame
Roll Up Door: One
Secured Fencing: Yes
APN: 038-155-032 (0.42 acre parcel)
Zoning: CG (General Commercial)
Lease Rate: \$21.00 psf
NNN Charges: \$0.26 psf
Location: 1/4 mile from Hwy 101 & 12



The information contained herein has been obtained from sources deemed reliable, but accuracy is not guaranteed. JACKS Commercial Real Estate has not verified it and makes no guarantee, warranty or representation about it.

Brian Jacks | 916-837-3456 | www.JacksCommercial.com | DRE Lic #02088254