

Industrial/Flex | For Lease

CBRE

Silver Star Business Center

2,002-10,020 SF Available

4026 & 4100 Silver Star Rd
Orlando, FL 32808

Grade Level Loading | 0.23 Acre Yard | NW Orange/Silver Star Submarket

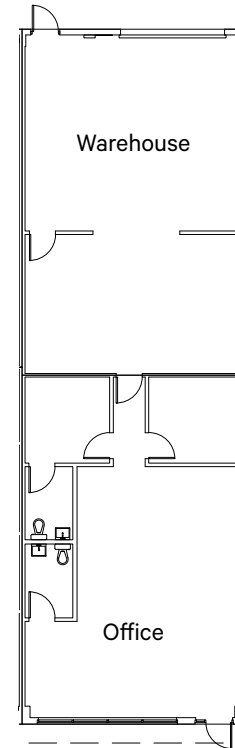


4100 Building - Suite B - 100% HVAC

SUITE HIGHLIGHTS

- + 2,002 SF Total
- + 1,000 SF Office Total
- + 20'-24' Clear Height
- + 2.0/1000 SF Parking Ratio
- + Two 12'x12' Grade Level Doors
- + 3 Phase Power - 120/208V
- + 350 Amps

2,002 SF: Asking: \$18.50 | Opex: \$4.25 | Move-In Ready

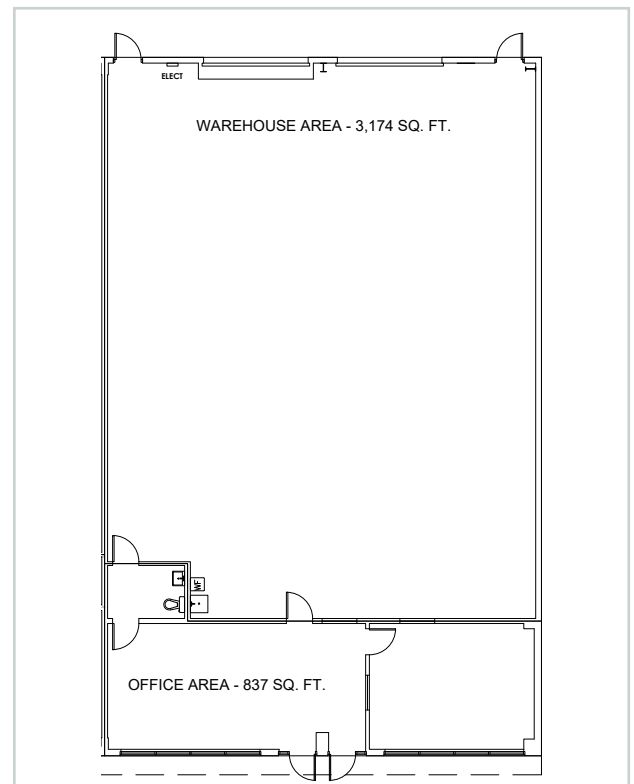


4100 Building - Suite D - 100% HVAC

SUITE HIGHLIGHTS

- + 4,011 SF Total
- + 837 SF Office
- + 3,174 SF Warehouse
- + 20'-24' Clear Height
- + 2.0/1000 SF Parking Ratio
- + Two 12'x12' Grade Level Doors
- + 3 Phase Power - 120/208V
- + 200 Amps

Asking: \$16.50 | Opex: \$4.25 | Available Within 30 Days



CONTACT US

Alex Eastwood
850 356 8231

Cameron Thomas
407 404 5078

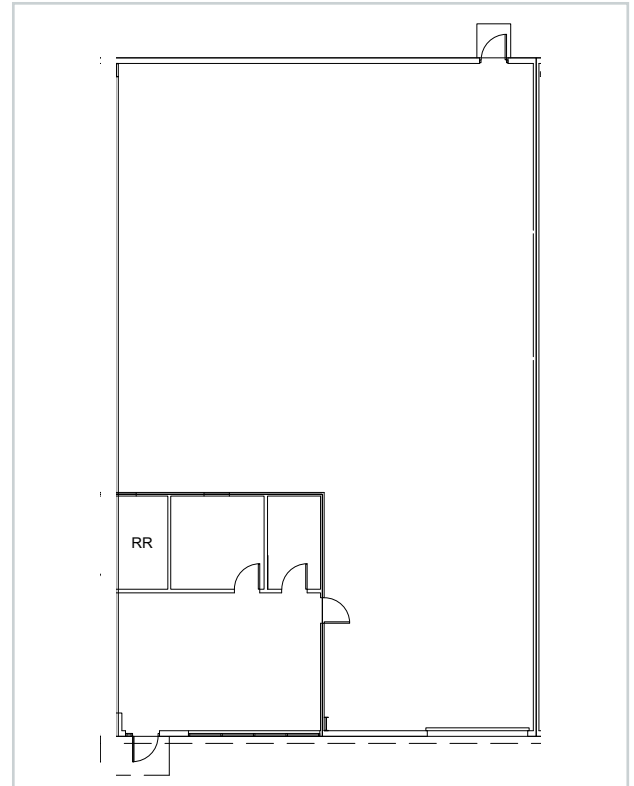
Jose Rivera
407 404 5067

4026 Building - Suite A2

SUITE HIGHLIGHTS

- + 3,960 SF Total
- + 693 SF Office Total
- + 3,267 SF Warehouse
- + 20'-24' Clear Height
- + 2.0/1000 SF Parking Ratio
- + One 12'x12' Grade Level Door
- + 3 Phase Power – 120/208V

Asking: \$16.50 | Opex: \$4.25 | Available Within 30 Days



± 0.17 or ± 0.06 Acre Laydown Yard
*Can be combined with any suite.
Please inquire for pricing.*



CONTACT US

Alex Eastwood
850 356 8231

Cameron Thomas
407 404 5078

Jose Rivera
407 404 5067

Location & Park Plan



CONTACT US

Alex Eastwood
850 356 8231

Cameron Thomas
407 404 5078

Jose Rivera
407 404 5067

Silver Star Business Center

4026 & 4100 Silver Star Rd | Orlando, FL 32808

For Lease

Packing District

Silver Star Business Center consists of 32,000 square feet across two grade level buildings, complete with a small IOS yard. The facility features 12' x 12' grade-level loading doors, spacious offices, and is conveniently location near major highways, restaurants, recreation options, and both labor and decision maker housing.

Property Highlights

- + NW Orange County Submarket
- + 32,000 SF Total
- + 2.65 Acre Site
- + 2.0/1000 SF Parking Ratio
- + 20' - 24' Clear Height
- + 12' x 12' Grade Level Doors
- + Zoning: I-G
- + 0.17 & 0.06 Acres IOS Available
- + Near the "Contractor District"
- + Proximity to Dining Amenities



Location Highlights

Silver Star Business Center offers flex/ industrial occupiers a significant advantage as it's located in the dynamic NW Orange County Submarket, close to major highways, near the "contractor district", and in the path of

progress for the Orlando MSA's NW expansion. Within twelve (12) minutes of Interstate-4 and nine (9) minutes from SR-408 (our East/West Expressway), Silver Star Business Center is perfectly positioned to accommodate a host

of users. The area also offers numerous dining and recreation amenities, such as the brand new Leonard & Marjorie Williams Family YMCA. The Packing District and College Park offer a wide variety of lunch options.

Contact Us

Alex Eastwood

Senior Associate

850 356 8231

alex.eastwood@cbre.com

Cameron Thomas

Senior Associate

407 404 5078

cameron.thomas@cbre.com

Jose Rivera

Associate

407 404 5067

jose.rivera1@cbre.com

© 2025 CBRE, Inc. All rights reserved. This information has been obtained from sources believed reliable, but has not been verified for accuracy or completeness. You should conduct a careful, independent investigation of the property and verify all information. Any reliance on this information is solely at your own risk. CBRE and the CBRE logo are service marks of CBRE, Inc. All other marks displayed on this document are the property of their respective owners, and the use of such logos does not imply any affiliation with or endorsement of CBRE. Photos herein are the property of their respective owners. Use of these images without the express written consent of the owner is prohibited.

CBRE