

# 4443 LENNOX BLVD

INGLEWOOD, CA 90304

3,050 SF COMMERCIAL SPACE

FOR LEASE: \$5,978.00  
(\$1.96/SF) GROSS

- Unincorporated LA County
- Private Parking in Rear
- High Visibility, Frontage on Lennox Near Hawthorne Blvd
- Ideal for many retail/office uses



**JOSHUA SCHWARTZ**

Vice President

DRE # 02058318

📞 424.218.9871

✉️ JS@LACommercial.com



# PROPERTY OVERVIEW

## 3,050 SF FOR LEASE

### PROPERTY OVERVIEW

4443 Lennox Blvd offers a highly functional and well-located opportunity for retail or office users looking to establish a presence in the thriving Inglewood trade area. Positioned with convenient access to LAX and the I-405 and I-105 freeways, the property ensures seamless connectivity for both clients and employees. Renovated in 2016, the building features a bright, open interior with abundant natural light streaming through window-lined, south-facing frontage along Lennox Boulevard—creating an inviting environment ideal for customer-facing businesses or collaborative office layouts. The flexible, open floor plan allows for a range of configurations, including potential build-to-suit options tailored to tenant needs.

Zoned C2 in unincorporated Los Angeles County, the property supports a wide variety of commercial uses, making it a versatile choice for retail, showroom, creative office, or service-oriented businesses. Additional features include ground-level loading at the rear for operational efficiency, a partially gated private lot for added security, and six dedicated on-site parking spaces—a valuable amenity in this high-demand area. With strong visibility, functional design, and proximity to major infrastructure and ongoing area growth, 4443 Lennox Blvd presents a compelling opportunity for businesses seeking both convenience and long-term upside.

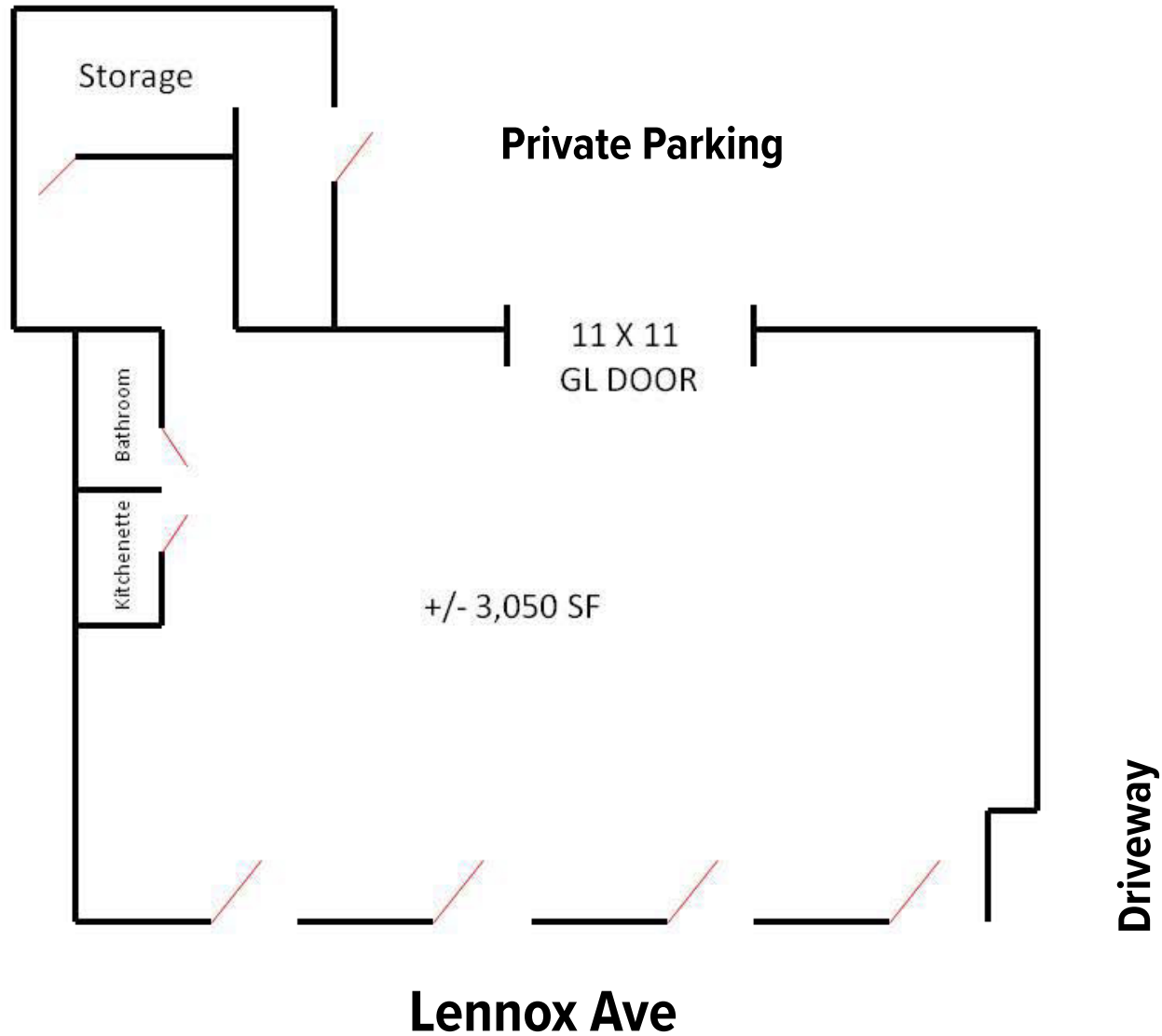
### AVAILABLE FOR LEASE

💰 \$5,978.00/mo. (\$1.96/PSF GROSS)



# FLOOR PLAN

## 3,050 SF FOR LEASE



**JOSHUA SCHWARTZ** | DRE # 02058318

818.912.1364

JS@LACommercial.com

# EXTERIOR PHOTOS

## 3,050 SF FOR LEASE



# INTERIOR PHOTOS

## 3,050 SF FOR LEASE



**JOSHUA SCHWARTZ** | DRE # 02058318

📞 424.218.9871

✉️ JS@LACommercial.com

# 4443 LENNOX BLVD

INGLEWOOD, CA



**JOSHUA SCHWARTZ**

DRE # 02058318

 424.218.9871

 JS@LACommercial.com



627 Aviation Way, Manhattan Beach, CA 90260