

New Construction - On The Water  
*Sleepy Hollow, NY*

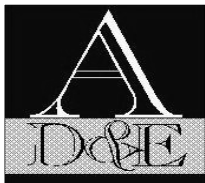
OPENING MARCH 2025



Join DeCicco & Sons Gourmet Supermarket

**AVAILABLE FOR LEASE**

10,000 Square Foot (divisible) Retail Space Adjacent to DeCiccoss



Aries Deitch & Endelson, Inc.  
455 Central Avenue  
Scarsdale, NY 10506  
914 949-2800  
[www.ade-re.com](http://www.ade-re.com)

**EXCLUSIVE LISTING**

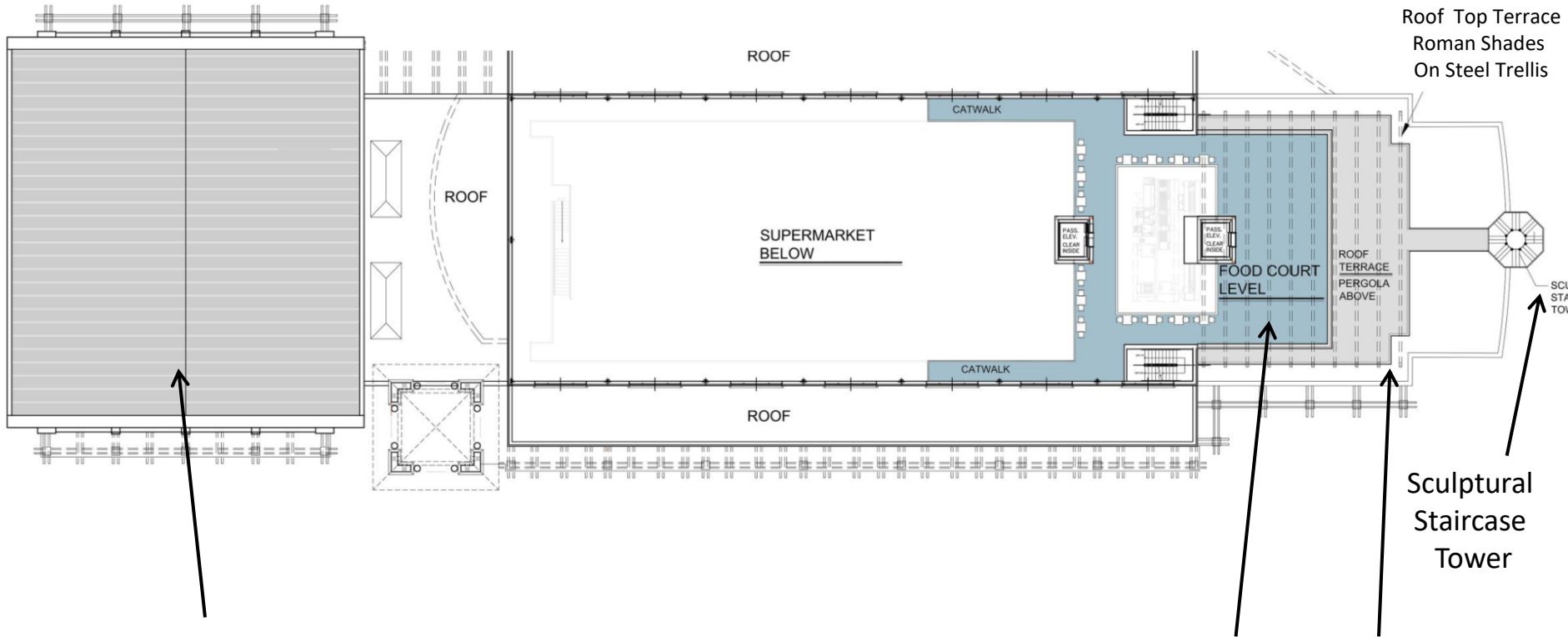
Martin Deitch ext .113  
[marty@ade-re.com](mailto:marty@ade-re.com)

Eugene Berger ext. 116  
[gene@ade-re.com](mailto:gene@ade-re.com)

DeCicco & Sons is widely known as the food market of choice for those who have a serious love for food and cooking

# DeCicco & Sons Supermarket

Upper Level Plan Shows Location of Restaurant with Pergola Covered Terrace  
10,000 sf Adjacent Retail Space is Divisible to Multiple Stores.



10,000 Square Foot (divisible in to multiple stores )  
Retail Space Adjacent to DeCicco & Sons

5,736 Square Foot Restaurant Space with a 1,909  
Square Foot Outdoor Terrace Partially Covered with a  
Pergola

Side View Shows Restaurant Outdoor Deck



# THE NEW RIVER VIEW



## LEGEND

- 1. Toll Brothers Apartment Living
- 2. Toll Brothers Townhomes
- 3. Toll Brothers Sales Gallery
- 4. Toll Brothers Condos
- 5. Hines Apartments
- 6. Planned DeCicco & Sons Supermarket
- 7. Planned 140-Room Boutique Hotel
- 8. Planned Waterfront Park & Boat Docks
- 9. Planned Waterfront Amenity
- 10. Kingsland Point Park
- 11. Metro-North Railroad
- Planned Retail and Office
- Planned Residential
- Planned Restaurant

**DeCicco & Sons  
Supermarket**

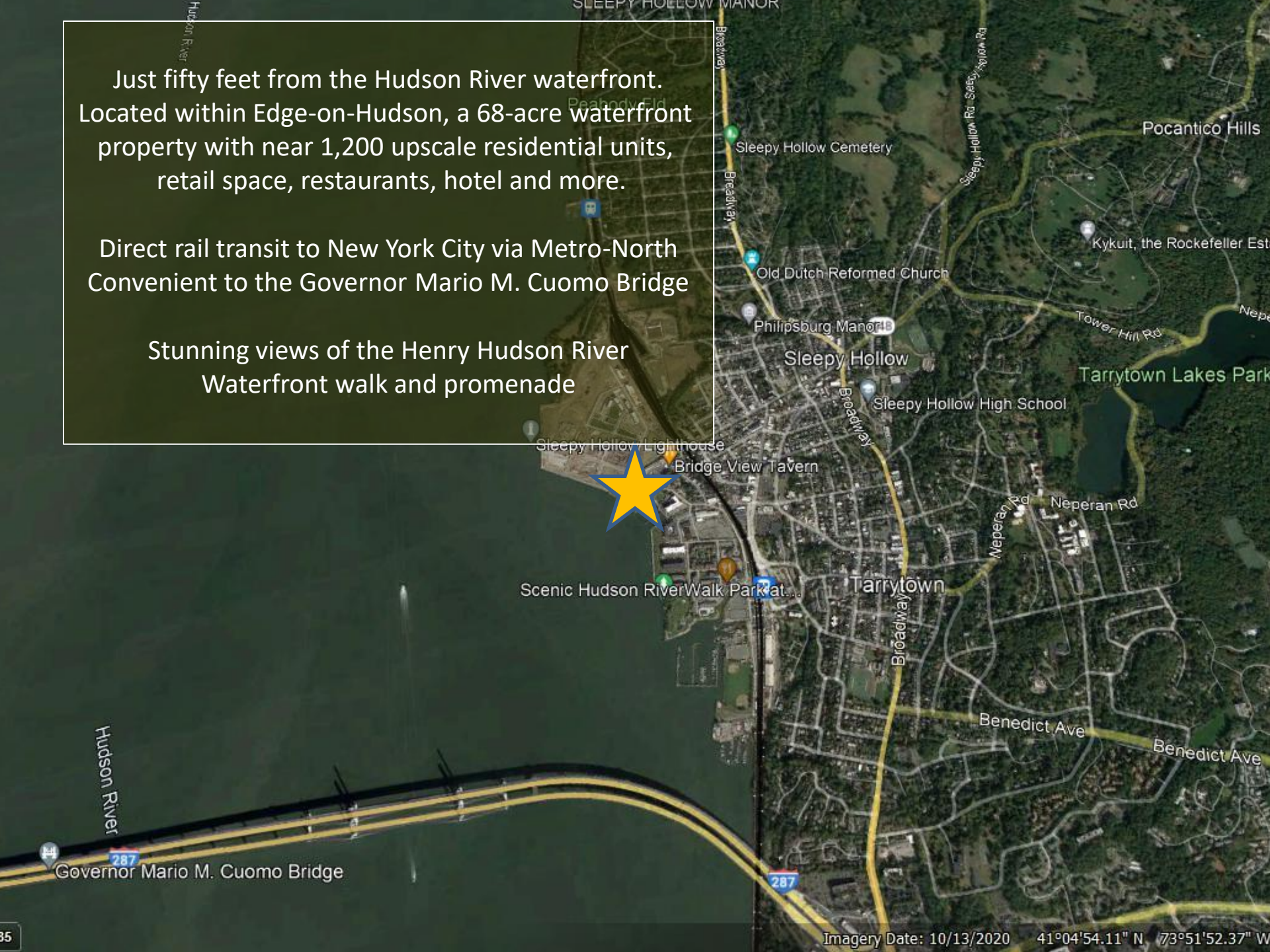
Hudson River



Just fifty feet from the Hudson River waterfront.  
Located within Edge-on-Hudson, a 68-acre waterfront  
property with near 1,200 upscale residential units,  
retail space, restaurants, hotel and more.

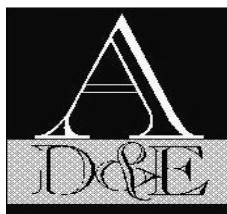
Direct rail transit to New York City via Metro-North  
Convenient to the Governor Mario M. Cuomo Bridge

Stunning views of the Henry Hudson River  
Waterfront walk and promenade



**EXCLUSIVE LISTING**  
**Martin Deitch ext 113**  
[marty@ade-re.com](mailto:marty@ade-re.com)

**Eugene Berger ext. 116**  
[gene@ade-re.com](mailto:gene@ade-re.com)



**Aries Deitch & Endelson, Inc.**  
**455 Central Avenue**  
**Scarsdale, NY 10506**  
**914 949-2800**  
**[www.ade-re.com](http://www.ade-re.com)**