

SABAL VI



3611 Queen Palm Drive | Tampa, FL 33619

Move-In Ready Office Space For Lease

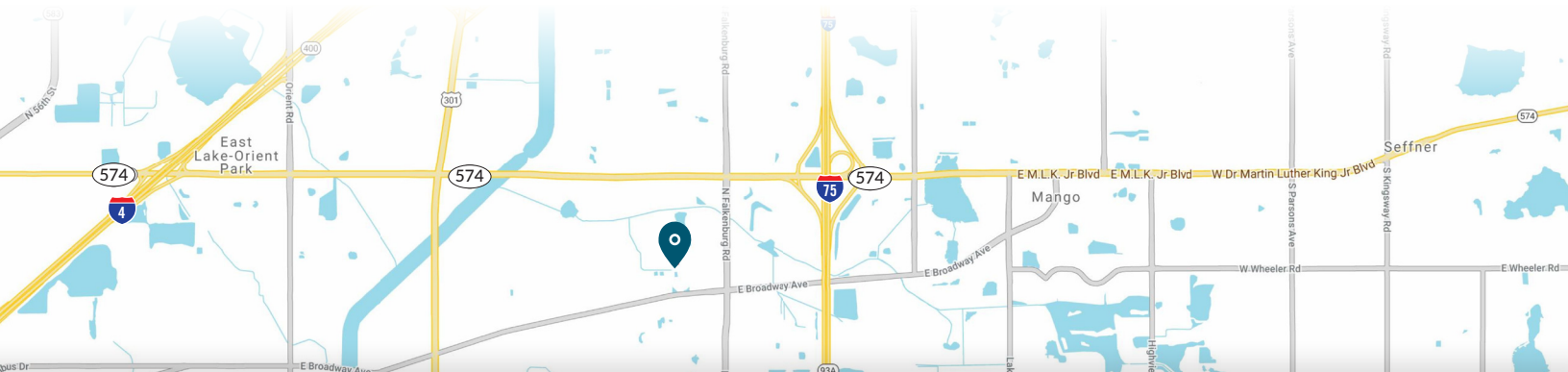


PROPERTY HIGHLIGHTS

Suite 125: 7,592 SF

Suite 170: 16,607 SF

- Immediate occupancy
- Move-in ready
- Competitive market rates and terms
- Building and monument signage opportunity
- Generous parking ratio of 5.00/1,000 SF
- Constructed in 1988 and located within 1,000-acre Sabal Park, Sabal VI is a 96,346 SF Class A office property
- Located near N Falkenburg Road and E Dr. MLK Jr. Blvd, with easy access to I-75 and I-4



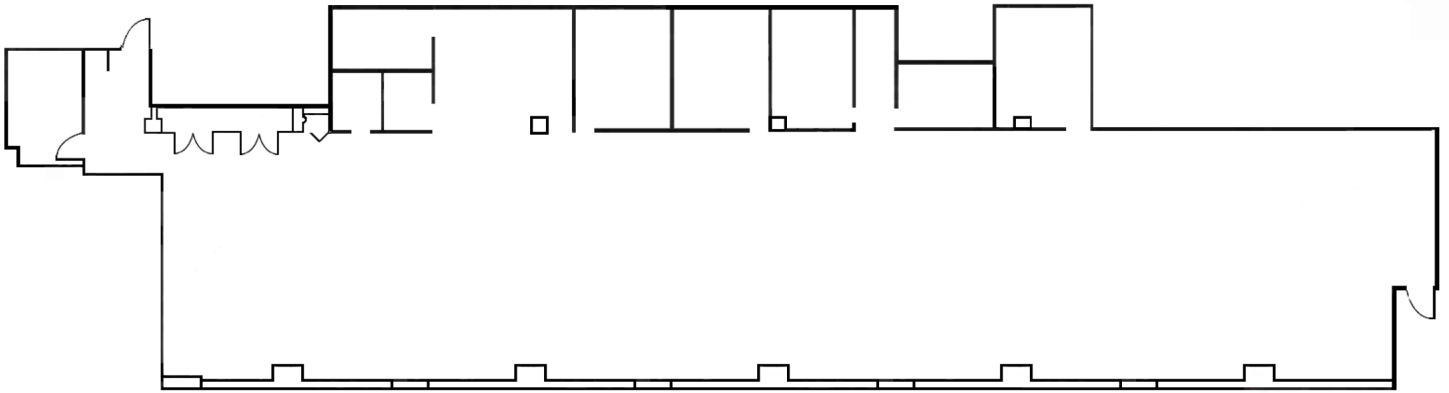
LICENSED REAL ESTATE BROKER | FranklinSt.com

CHAD RUPP | Managing Director
813.345.5891 | Chad.Rupp@FranklinSt.com

MATT ALEXANDER | Director
813.559.2006 | Matthew.Alexander@FranklinSt.com

FLOOR PLANS

Suite 125: 7,592 SF



Suite 170: 16,607 SF

