



SAN FRANCISCO, CA 94103

1154-1158 Howard Street

FOR LEASE

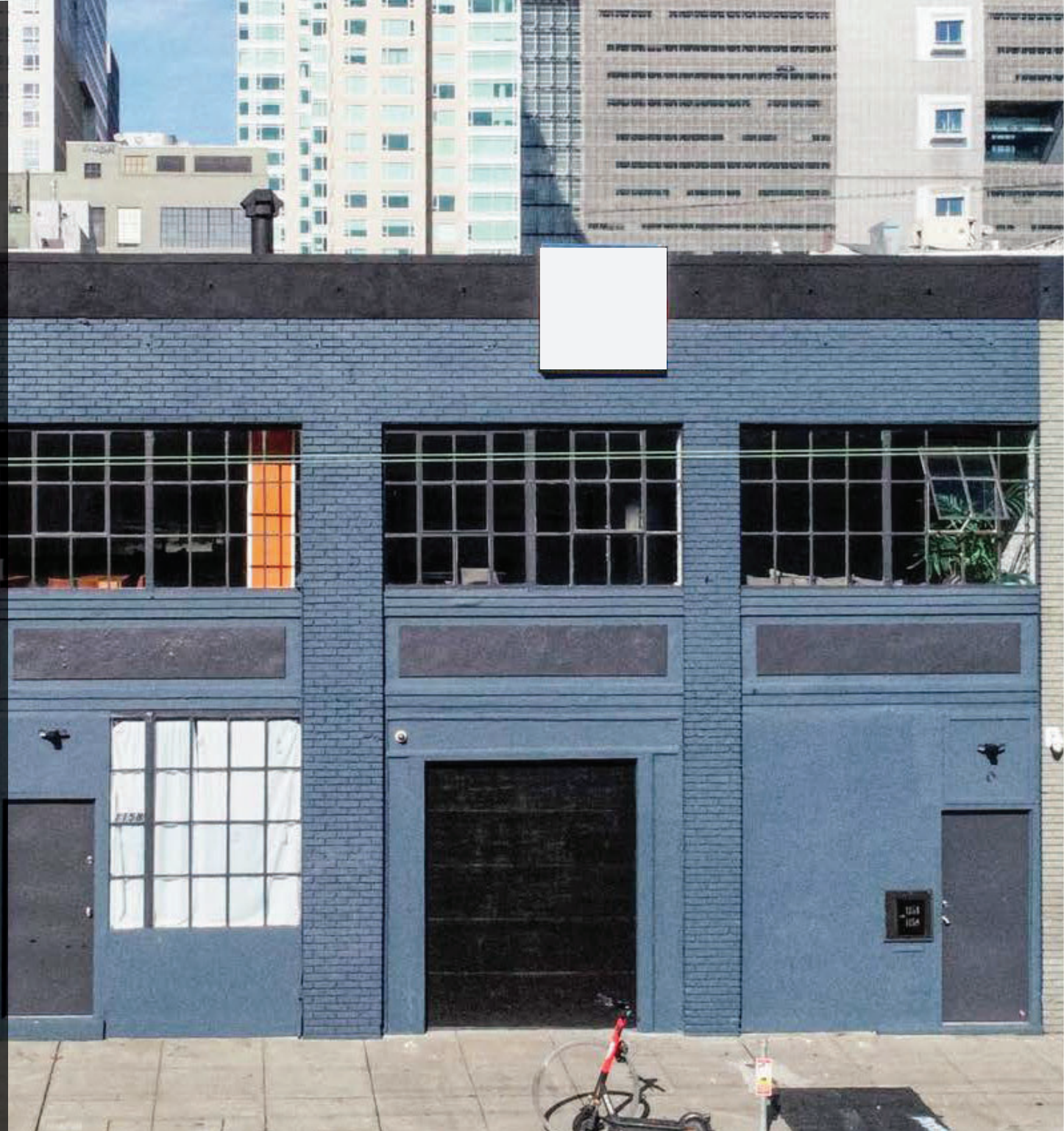
Plug & Play Flex Building
South of Market

TREVOR GUDIM

Executive Vice President
Email: trevor@calco-sf.com
Cell: 858.922.2632
DRE #01979980

BENNETT FALONI

Associate
Email: bennett@calcosf.com
Cell: 724.678.2851
DRE #01902075



We're Here to Help – Reach Out Today!

425 2nd St. Suite 450, San Francisco, CA 94107 | info@calcosf.com | (415) 970-0000 | calcosf.com

PROPERTY SUMMARY

| 1154-1158 Howard St.

AVAILABLE SPACE | +/- 6,520 - 13,040 Square Feet

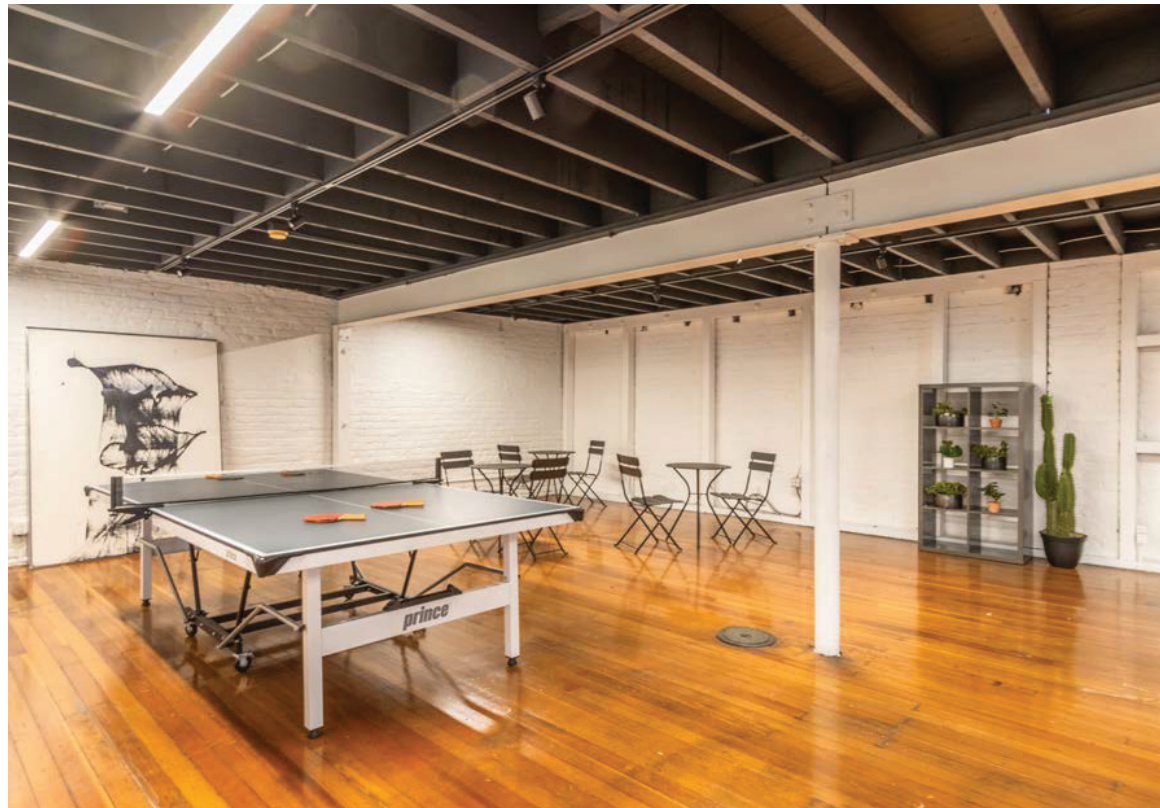
RENTAL RATE | \$30 / Square Foot / Year, Industrial Gross

ZONING | WMUG - Western Mixed Use General

AVAILABLE | Immediately

BUILDING ATTRIBUTES

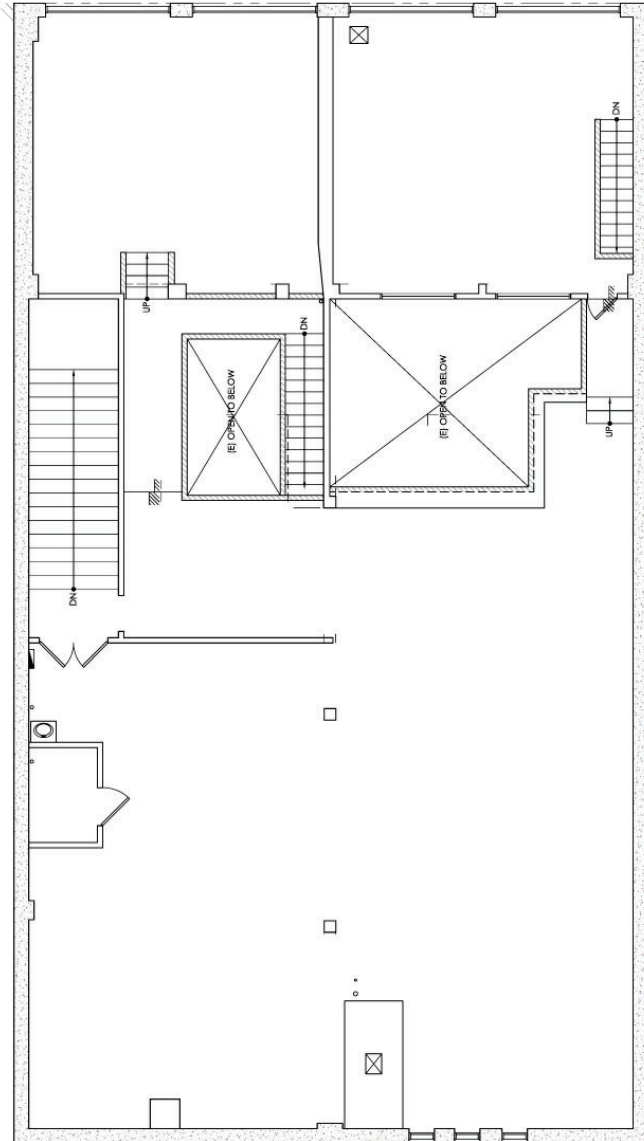
- Furnished or Unfurnished Flex Building
Centrally Located on Howard St
- Extensively Renovated Throughout
- Two (2) Grade Level Drive-In Roll-Up Doors
- Industrial Features Support Multitude of Uses
- Two (2) Meeting Rooms
- Multiple ADA Restrooms w/ a Shower
- Abundance of Natural Light w/ Skylights
& Large Windows



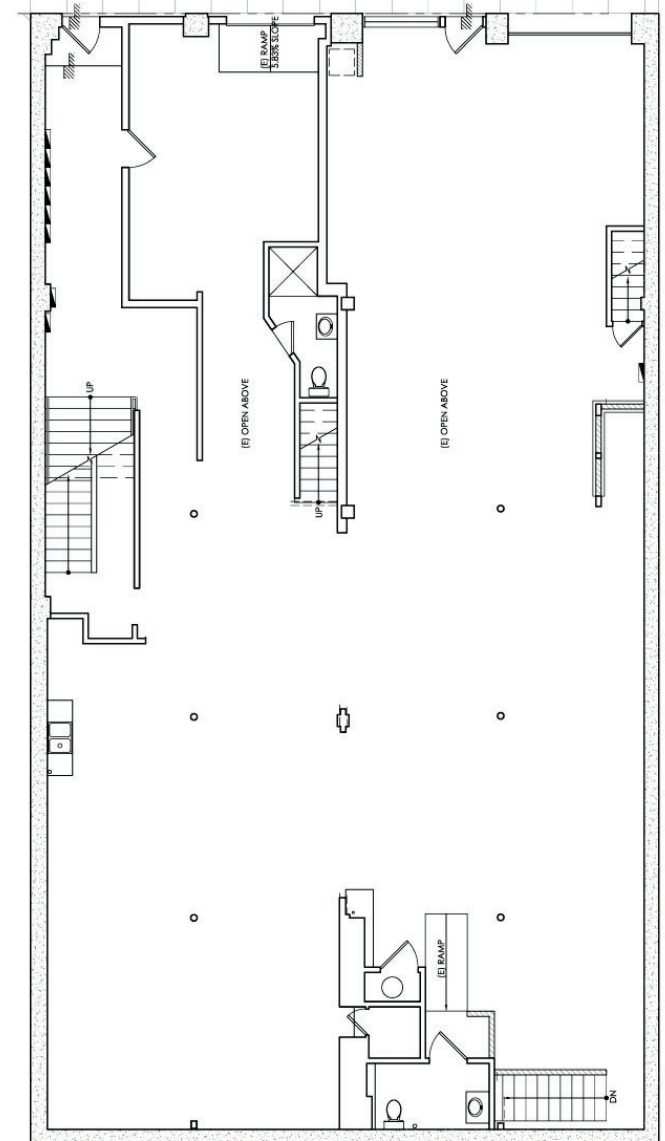
FLOOR PLANS

| 1154-1158 Howard St.

SECOND LEVEL



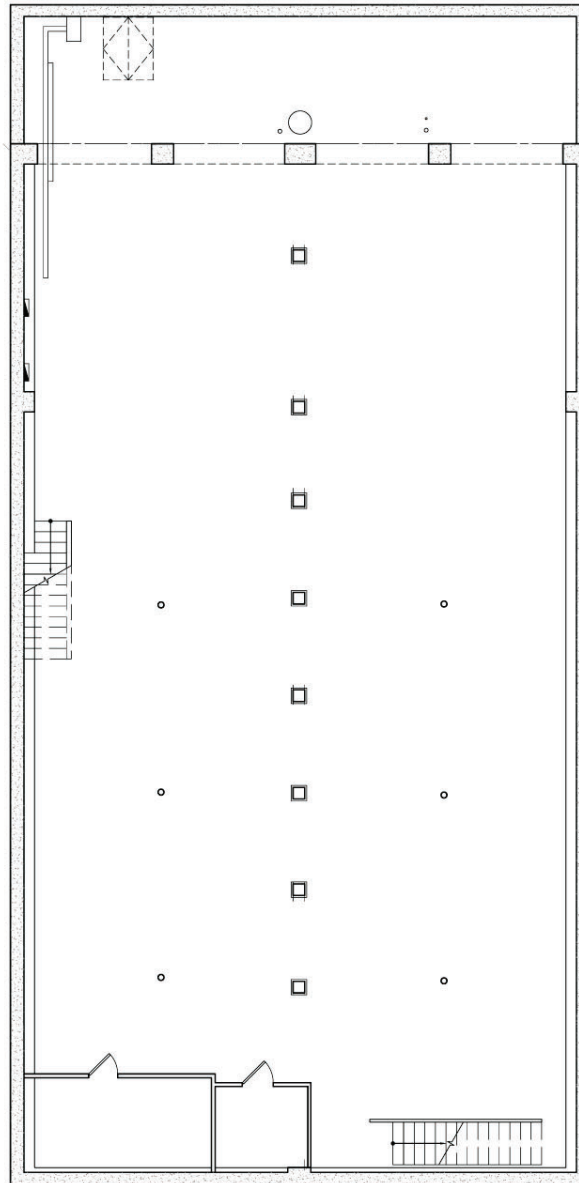
GROUND LEVEL



FLOOR PLANS

| 1154-1158 Howard St.

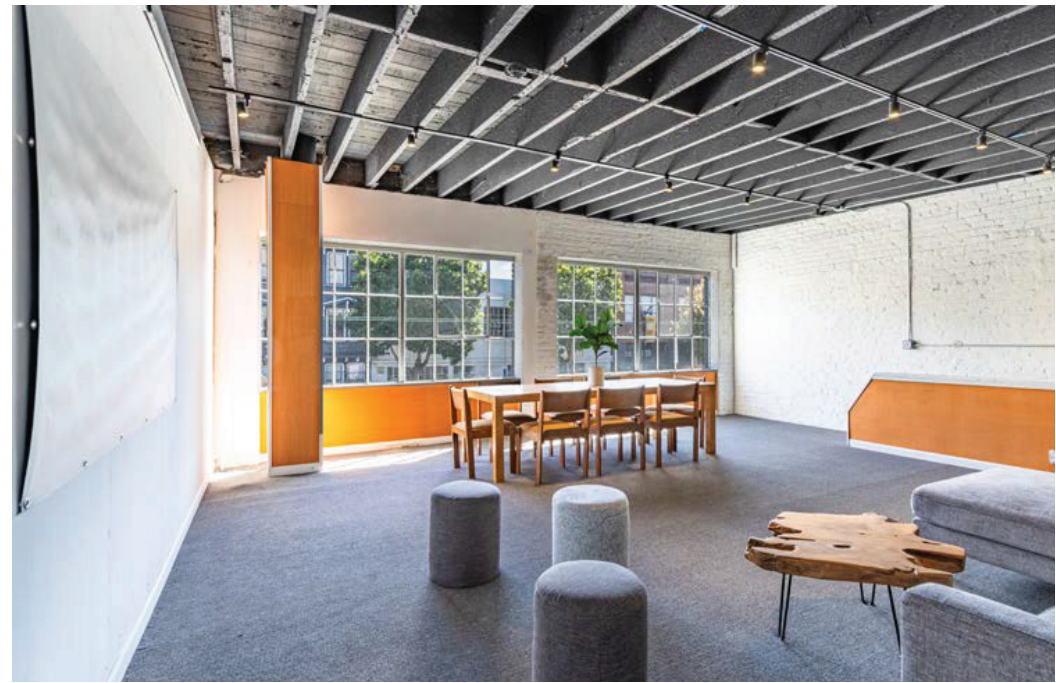
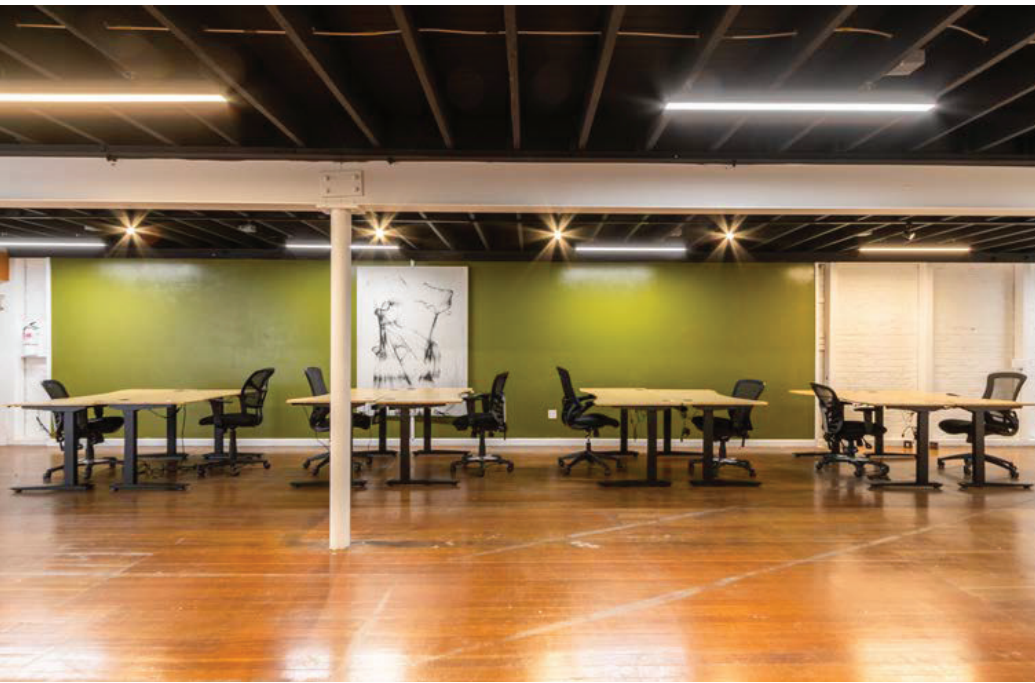
LOWER LEVEL



GALLERY

| 1154-1158 Howard St.

 **CALCO**
COMMERCIAL, INC.



LOCATION OVERVIEW

| 1154-1158 Howard St.



Desirable South of Market location, walkable to nearby amenities, public transportation and to surrounding neighborhoods.



06 MIN to Civic Center
Bart

12 MIN to Civic Center

23 MIN to 16th Street Bart



06 MIN to 4th & King
Caltrain

08 MIN to Union Square

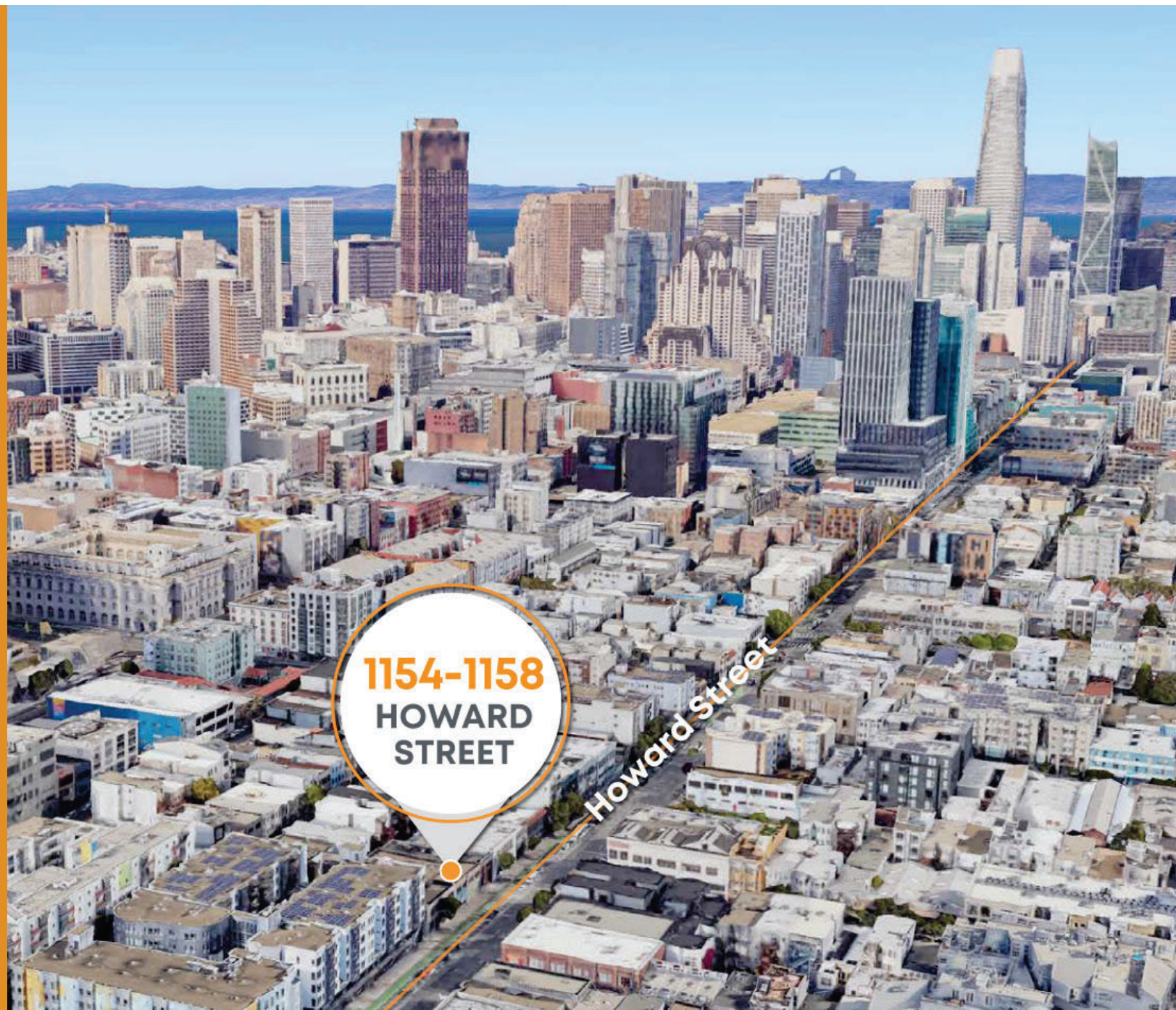
12 MIN to Financial District



04 MIN to 80 On-Ramp

04 MIN to 101 On-Ramp

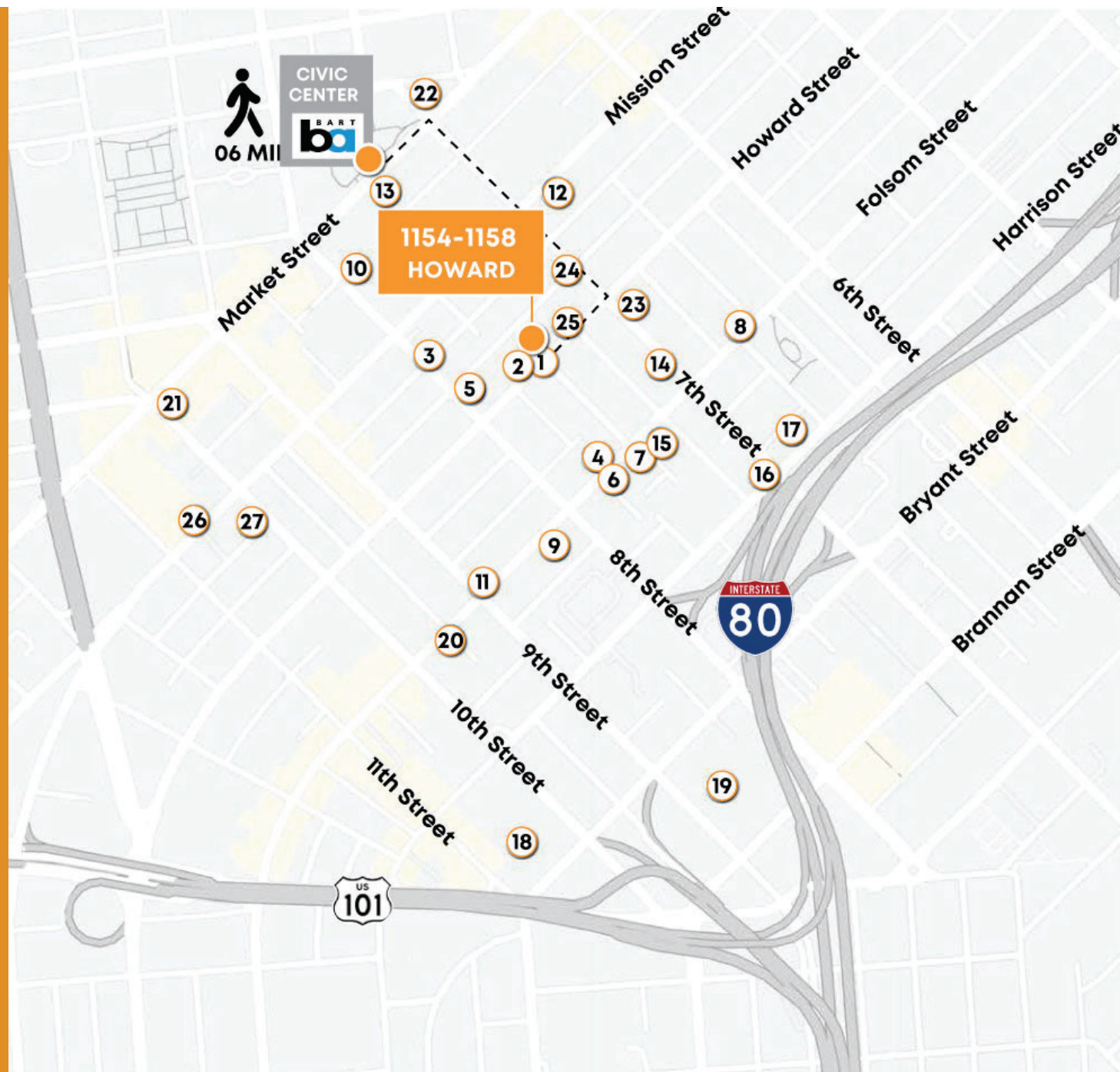
06 MIN to 280 On-Ramp



NEARBY AMENITIES

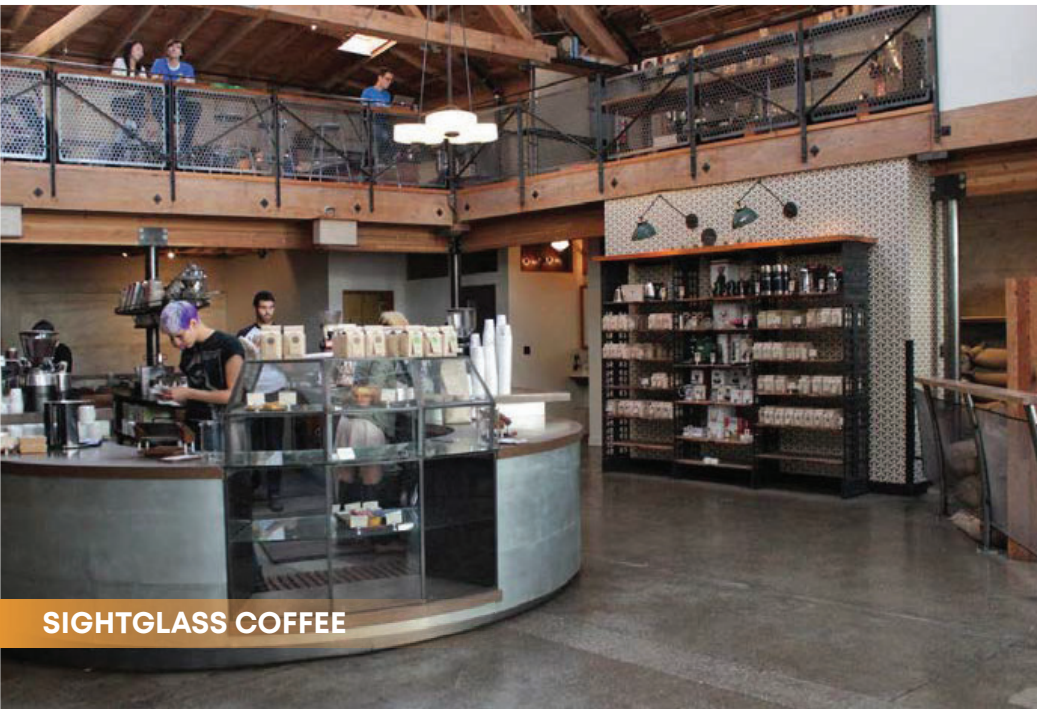
| 1154-1158 Howard St.

- 1 Cellarmaker Brewing Co.
- 2 Rize Up Bakery
- 3 Sizzling Pot King
- 4 DECANTsf
- 5 Harvest Urban Market
- 6 Basil Thai Restaurant & Bar
- 7 Raven Bar
- 8 Deli Board
- 9 Driftwood
- 10 Whole Foods Market
- 11 Azúcar Lounge
- 12 Square Pie Guys
- 13 La Cuisine Cafe
- 14 Sightglass Coffee
- 15 Boba Guys
- 16 Rocco's Cafe
- 17 Rumors
- 18 Plaid Headquarters
- 19 Costco Wholesale
- 20 Trader Joe's
- 21 Powerhouse
- 22 Twitter HQ
- 23 Charmaine's Rooftop Bar
- 24 Champagne Society
- 25 Caffè Moda
- 26 Ritual Hot Yoga
- 27 WeWork
- 28 Urbana SOMA



NEARBY AMENITIES

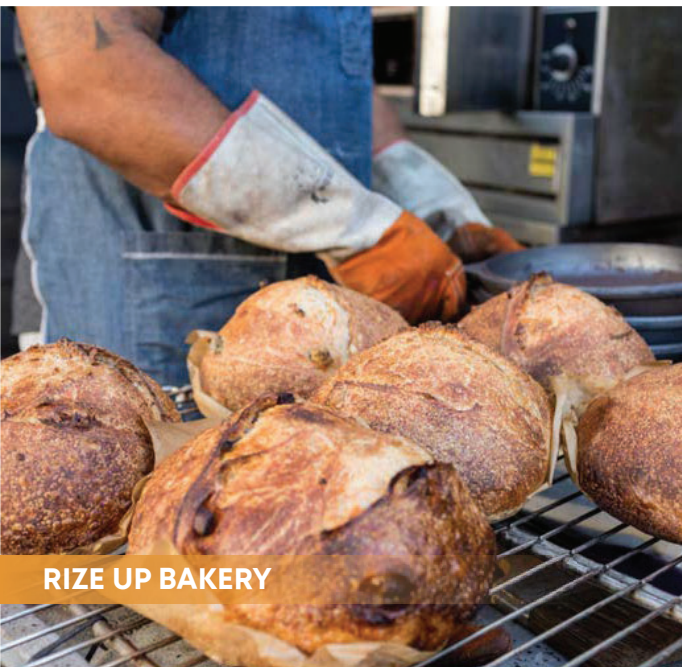
| 1154-1158 Howard St.



SIGHTGLASS COFFEE



CELLARMAKER BREWING CO.



RIIZE UP BAKERY



DECANTSF



LA CUISINE CAFE

**TREVOR GUDIM**

Executive Vice President
Email: trevor@calco-sf.com
Cell: 858.922.2632
DRE #01979980

BENNETT FALONI

Associate
Email: bennett@calcosf.com
Cell: 724.678.2851
DRE #01902075

PIONEERING REAL ESTATE SOLUTIONS WITH PROVEN EXPERTISE

Calco Commercial, founded in 2011 by Scott Mason, brings over 35 years of experience and 2,500+ transactions, totaling over \$2.2 billion in sales and leases. Specializing in leasing and sales of commercial real estate in the San Francisco Bay Area and nationwide, we consistently rank as a top-producing firm. With deep knowledge of the Bay Area market, our team offers clients over three decades of expertise and exceptional customer service, providing the tools and guidance to navigate the ever-changing commercial real estate landscape.