

FOR LEASE

A106: 19,573 SF (10,189 OFFICE)

WEST PARK CORPORATE CAMPUS

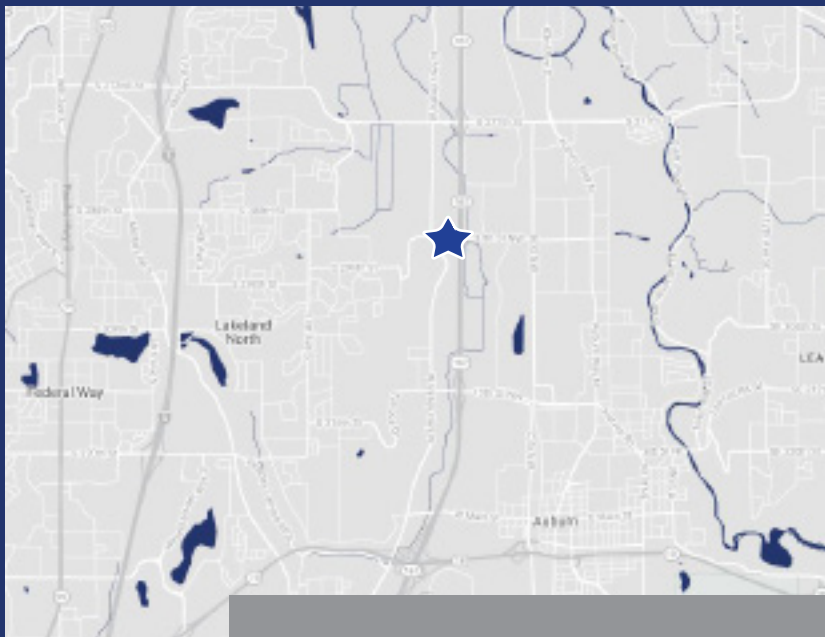
1220 37TH ST NW | AUBURN, WA



DOCK HIGH WAREHOUSE/OFFICE SPACE

FEATURES

- Total Size: 19,573 SF (10,189 Sf Office)
- First Floor Office: 5,094 SF
- Second Floor Office: 5094 SF
- 3 Dock high doors, 1 oversized grade level door
- 3-Phase power
- 30' Clear height
- Excellent office layout
- Sprinklered
- Excellent highway 167 frontage
- Class A image
- Excellent access and proximity to I-5, SR-18 and Hwy-167
- Built in 2000



Please Contact Brokers for Rates and Tours

EXCLUSIVELY OFFERED BY:

Arne Svendsen
(206) 947-2885
asvendsen@andoverco.com

Brian Bruininks, CCIM
(206) 336-5324
bbruininks@andoverco.com



THE ANDOVER COMPANY, INC./CORFAC INTERNATIONAL
900 SW 16th St, Ste 100 | Renton, WA 98057 | (206) 244-0770 | www.andoverco.com

West Park Corporate Campus is owned and operated by:



The information contained herein has been obtained from reliable sources, but is not guaranteed. A prospective buyer/tenant should verify each item relating to this property and all information contained herein.

FOR LEASE

A106: 19,573 SF (10,189 OFFICE)

WEST PARK CORPORATE CAMPUS

1220 37TH ST NW | AUBURN, WA



ADDRESS

1220 37th St NW | Auburn, WA

EXCLUSIVELY OFFERED BY:

Arne Svendsen
(206) 947-2885
asvendsen@andoverco.com

Brian Bruininks, CCIM
(206) 336-5324
bbruininks@andoverco.com

West Park Corporate Campus is owned and operated by:



THE ANDOVER COMPANY, INC./CORFAC INTERNATIONAL
900 SW 16th St, Ste 100 | Renton, WA 98057 | (206) 244-0770 | www.andoverco.com



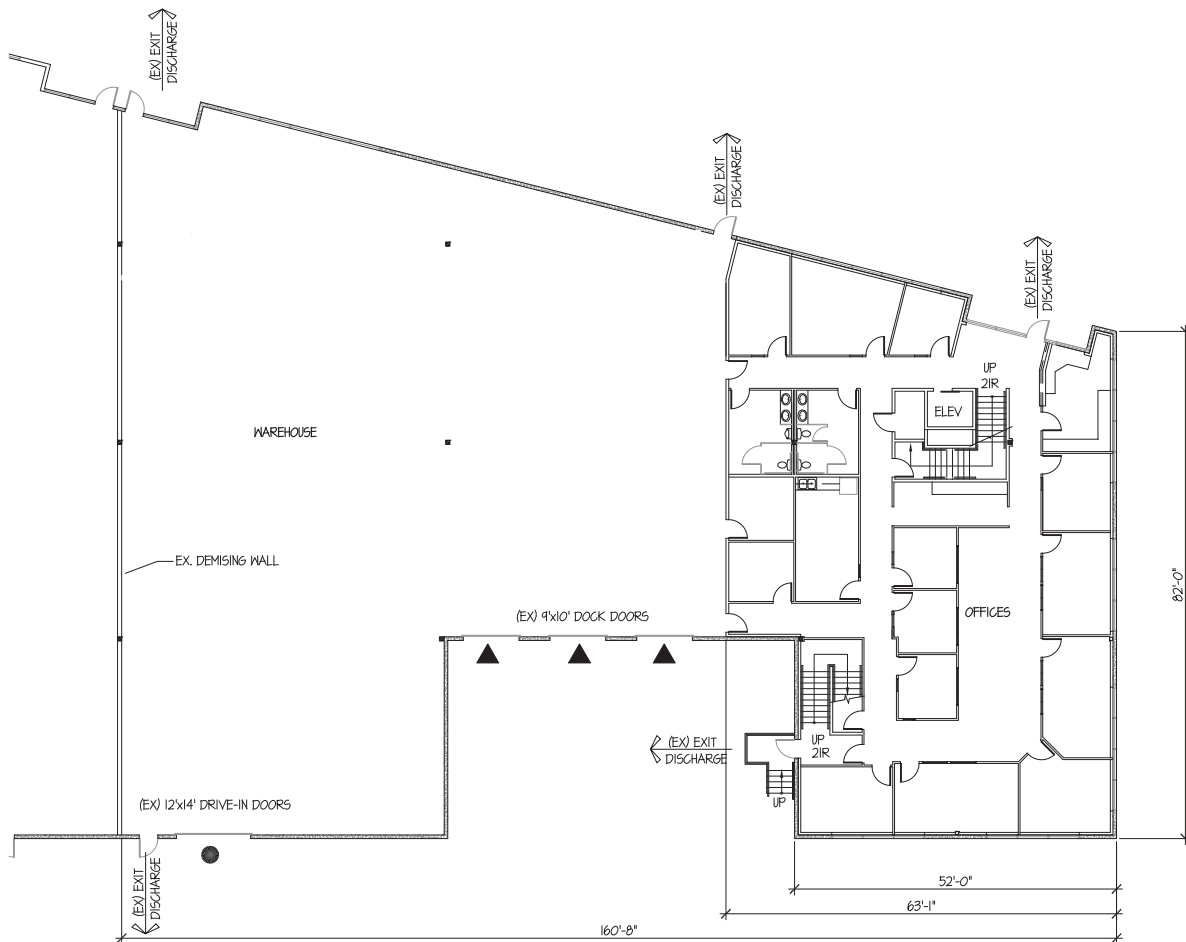
The information contained herein has been obtained from reliable sources, but is not guaranteed. A prospective buyer/tenant should verify each item relating to this property and all information contained herein.

FOR LEASE

A106: 19,573 SF (10,189 OFFICE)

WEST PARK CORPORATE CAMPUS

1220 37TH ST NW | AUBURN, WA



MAIN FLOOR PLAN

SCALE: 1/16" = 1'-0"

Warehouse + 5,094 SF Office



EXCLUSIVELY OFFERED BY:

Arne Svendsen
(206) 947-2885
asvendsen@andoverco.com

Brian Bruininks, CCIM
(206) 336-5324
bbruininks@andoverco.com

West Park Corporate Campus is owned and operated by:



THE ANDOVER COMPANY, INC./CORFAC INTERNATIONAL
900 SW 16th St, Ste 100 | Renton, WA 98057 | (206) 244-0770 | www.andoverco.com



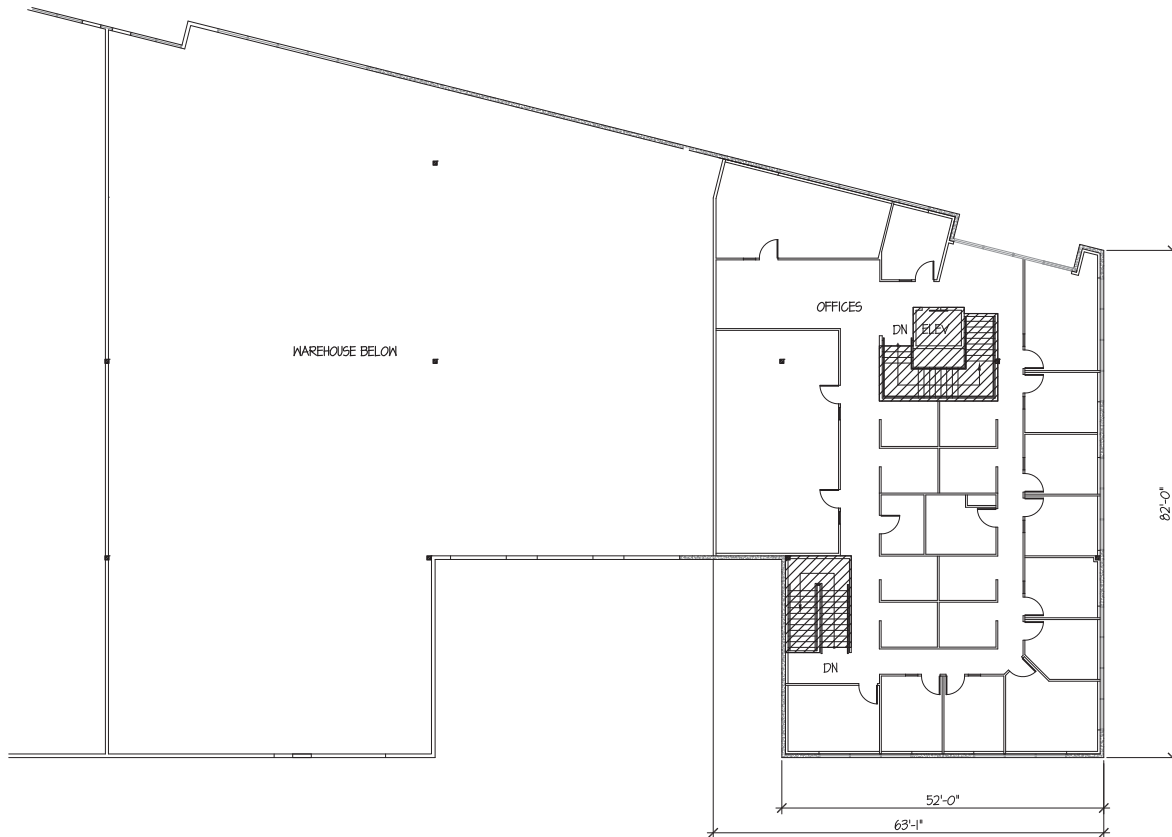
The information contained herein has been obtained from reliable sources, but is not guaranteed. A prospective buyer/tenant should verify each item relating to this property and all information contained herein.

FOR LEASE

A106: 19,573 SF (10,189 OFFICE)

WEST PARK CORPORATE CAMPUS

1220 37TH ST NW | AUBURN, WA



SECOND FLOOR PLAN

SCALE: 1/16" = 1'-0"

Additional 5,094 SF Office Space



EXCLUSIVELY OFFERED BY:

Arne Svendsen
(206) 947-2885
asvendsen@andoverco.com

Brian Bruininks, CCIM
(206) 336-5324
bbruininks@andoverco.com

West Park Corporate Campus is owned and operated



THE ANDOVER COMPANY, INC./CORFAC INTERNATIONAL
900 SW 16th St, Ste 100 | Renton, WA 98057 | (206) 244-0770 | www.andoverco.com



The information contained herein has been obtained from reliable sources, but is not guaranteed. A prospective buyer/tenant should verify each item relating to this property and all information contained herein.