

A photograph of a two-story building with a prominent wooden balcony and a steep, exposed rafter roof. The building is illuminated from within, and a tall, ornate street lamp stands in the foreground. The sky is a clear, deep blue.

FOR SUBLEASE | SUITE C-120-220 | 7,655 SF AVAILABLE | GENERAL RETAIL OFFICE

DANA MARINA PLAZA

24941 DANA HARBOR DRIVE | DANA POINT, CA 92629

FURNITURE AVAILABLE

DANA MARINA PLAZA

24941 Dana Harbor Dr.



PROPERTY HIGHLIGHTS

- Iconic 5-building project located in the heart of Dana Point Harbor
- Flexibility within potential uses
- Beautiful outdoor common areas
- Excellent signage opportunities with unparalleled visibility
- Proximity to amenities & food services including walking distance to marina
- On-site ATM
- Ocean views

55,457 SF RETAIL / OFFICE PROJECT

AVAILABILITIES

SUITE #	RSF	AVAILABLE	PRICING	SUBLEASE TERM
Suite C-120	3,184 SF	Immediate	\$2.70/SF + U & J	Through October '26 <i>Longer Term Available</i>
Suite C-210/220	4,471 SF	Immediate	\$2.70/SF + U & J	Through October '26 <i>Longer Term Available</i>

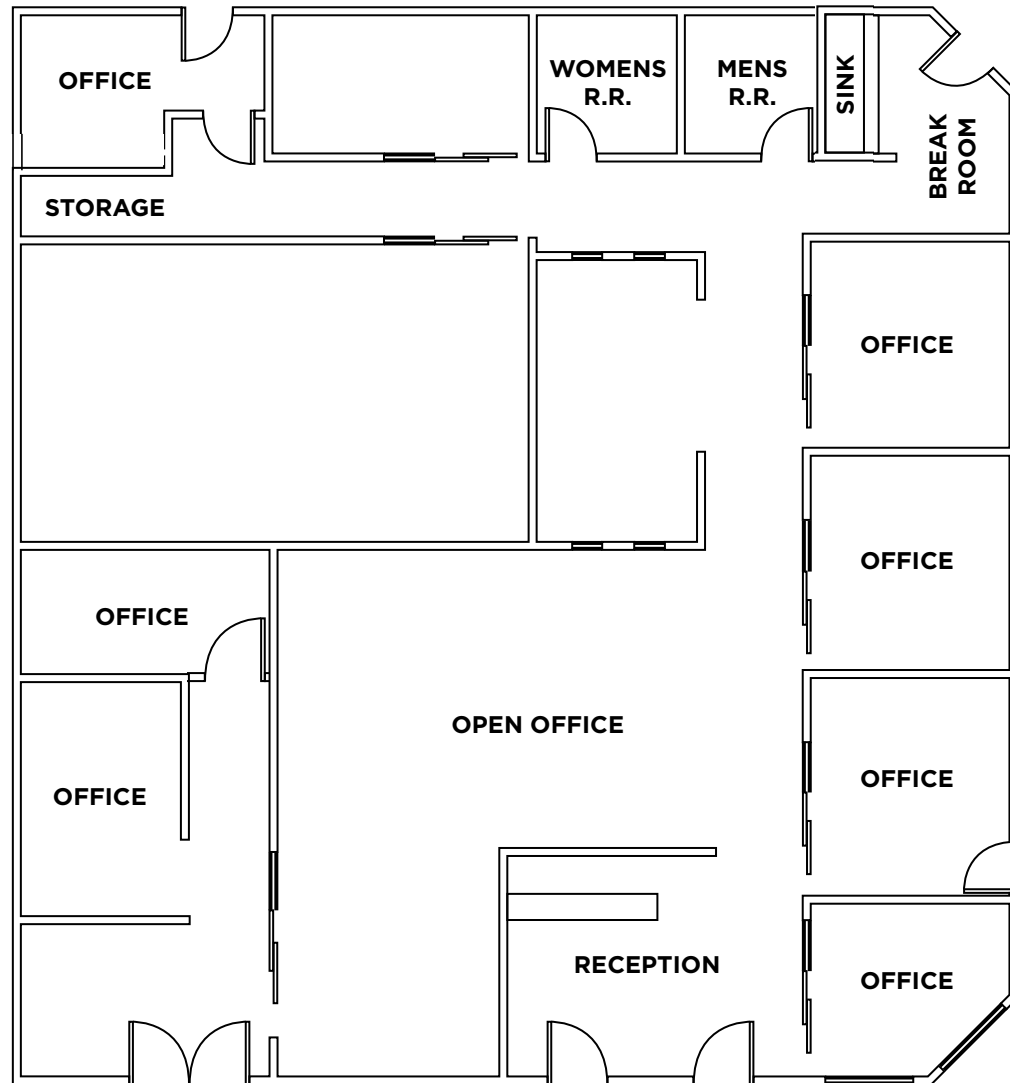


DANA MARINA PLAZA
24941 Dana Harbor Dr.
Suite C-120

**FLOOR
PLAN**

SUITE C-120

FURNITURE AVAILABLE



DANA MARINA PLAZA

24941 Dana Harbor Dr.
Suite C-210-220

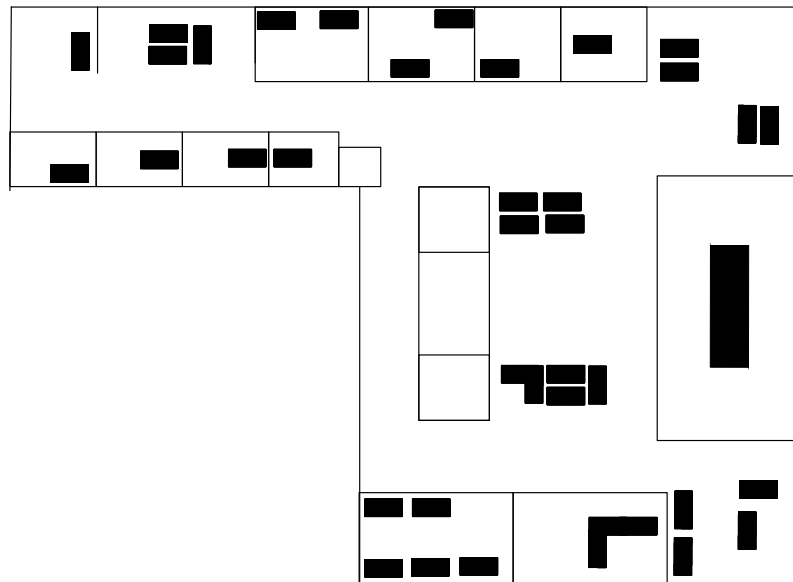


SUITE C-210-220

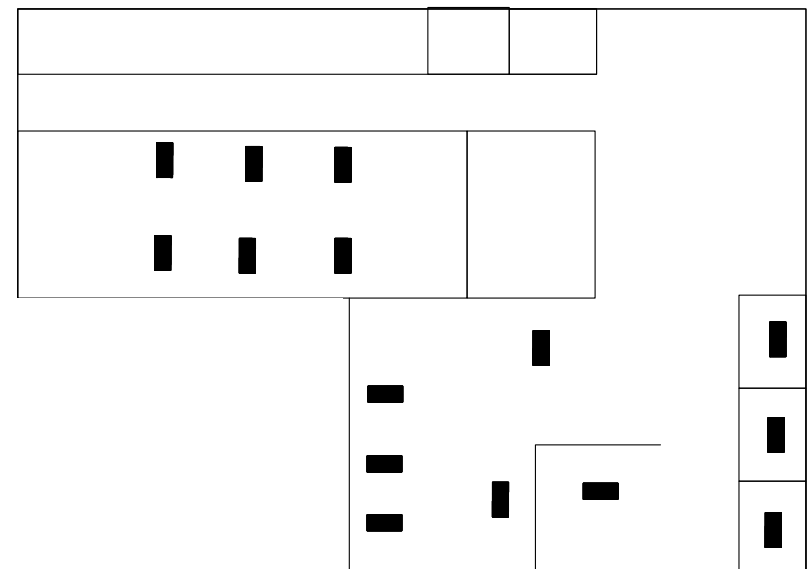
FURNITURE AVAILABLE
BLACK BOXES ARE DESKS

Front
Entrance

UPSTAIRS



DOWNSTAIRS



Front
Entrance

DANA MARINA PLAZA

24941 Dana Harbor Dr.
Suite C-120



GOLDEN LANTERN ST.

DANA POINT HARBOR DRIVE



DANA POINT HARBOR DRIVE

GOLDEN LANTERN ST.



FOR MORE INFORMATION, CONTACT:

BROOKS CAMPBELL

D: +1 760 431 4215

M: +1 760 500 7720

brooks.campbell@cushwake.com

LIC #01380901

DANIELLE BERGSON

D: +1 760 625 5202

M: +1 808 419 0042

danielle.bergson@cushwake.com

LIC #02196210



©2025 Cushman & Wakefield. All rights reserved. The information contained in this communication is strictly confidential. This information has been obtained from sources believed to be reliable but has not been verified. NO WARRANTY OR REPRESENTATION, EXPRESS OR IMPLIED, IS MADE AS TO THE CONDITION OF THE PROPERTY (OR PROPERTIES) REFERENCED HEREIN OR AS TO THE ACCURACY OR COMPLETENESS OF THE INFORMATION CONTAINED HEREIN, AND SAME IS SUBMITTED SUBJECT TO ERRORS, OMISSIONS, CHANGE OF PRICE, RENTAL OR OTHER CONDITIONS, WITHDRAWAL WITHOUT NOTICE, AND TO ANY SPECIAL LISTING CONDITIONS IMPOSED BY THE PROPERTY OWNER(S). ANY PROJECTIONS, OPINIONS OR ESTIMATES ARE SUBJECT TO UNCERTAINTY AND DO NOT SIGNIFY CURRENT OR FUTURE PROPERTY PERFORMANCE.