

# 220 East 23<sup>rd</sup> Street

BETWEEN 2<sup>ND</sup> AND 3<sup>RD</sup> AVENUES  
GRAMERCY PARK



**RETAIL SPACE FOR LEASE**



**RETAIL SPACE  
FOR LEASE**

Ori Melloul    Joshua Berkun  
347.377.1392    516.459.9251  
OMelloul@ksrny.com    JBerkun@ksrny.com



**RETAIL SPACE  
FOR LEASE**

Ori Melloul    Joshua Berkun  
347.377.1392    516.459.9251  
OMelloul@ksrny.com    JBerkun@ksrny.com



# 220 East 23<sup>rd</sup> Street

BETWEEN 2<sup>ND</sup> AND 3<sup>RD</sup> AVENUES | GRAMERCY PARK

**Size**

Ground Floor	1,800 SF
Mezzanine	1,644 SF
Basement	2,079 SF

**Frontage** 17 feet

**Possession** Immediate

**Transportation** 

## Comments:

- Busy cross-traffic block between subway stations & hospitals
- All uses considered
- New direct long-term lease
- ADA compliant entrance through the main building
- Great neighborhood location
- Neighboring tenants include: School of Visual Arts, CityMD, Chase Bank, Morton Williams Supermarket, Taco Bell, and more



CONTACT OUR BROKERS FOR MORE INFORMATION:

**Ori Melloul**  
OMelloul@ksrny.com  
347.377.1392

**Joshua Berkun**  
JBerkun@ksrny.com  
516.459.9251

**Hunter Lazan**  
HLazan@ksrny.com  
772.559.5195



All information supplied in this marketing presentation and/or flyer is from sources deemed reliable and is furnished subject to errors, omissions, modifications, removal of listings from sale/lease and to any listing condition. Any square footage, dimensions, floor plans and/or technical data set forth are approximations and are subject to further elaboration/confirmation.

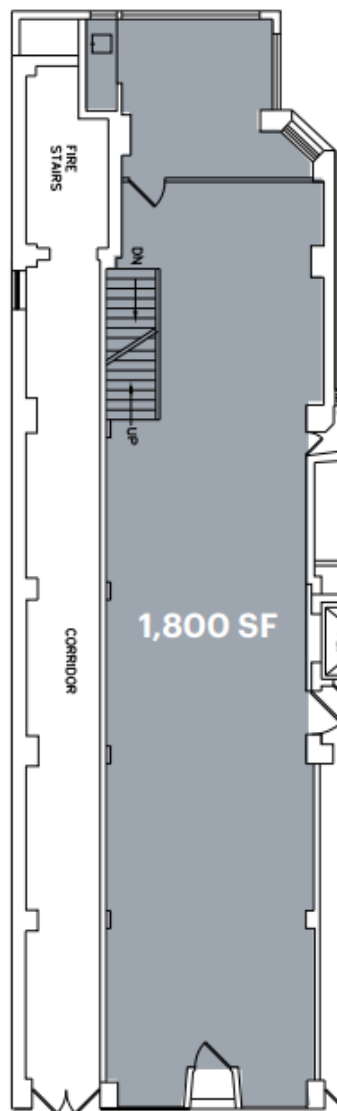


# 220 East 23<sup>rd</sup> Street

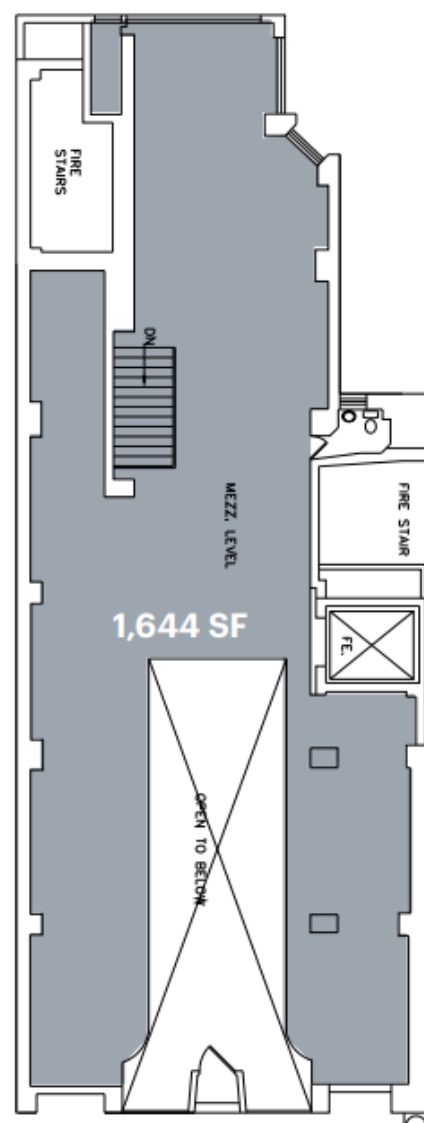
BETWEEN 2<sup>ND</sup> AND 3<sup>RD</sup> AVENUES  
GRAMERCY PARK



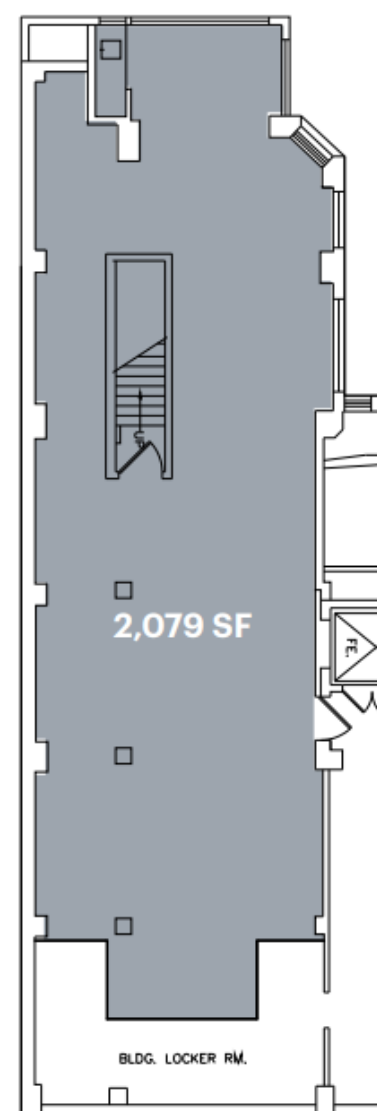
**GROUND FLOOR**



**MEZZANINE**



**BASEMENT**



CONTACT OUR BROKERS FOR MORE INFORMATION:



All information supplied in this marketing presentation and/or flyer is from sources deemed reliable and is furnished subject to errors, omissions, modifications, removal of listings from sale/lease and to any listing condition. Any square footage, dimensions, floor plans and/or technical data set forth are approximations and are subject to further elaboration/confirmation.

*Ori Melloul*  
OMelloul@ksrny.com  
347.377.1392

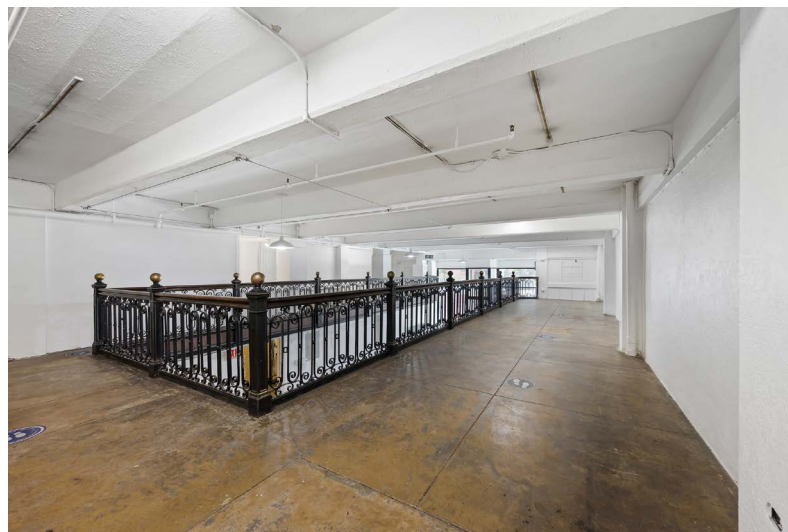
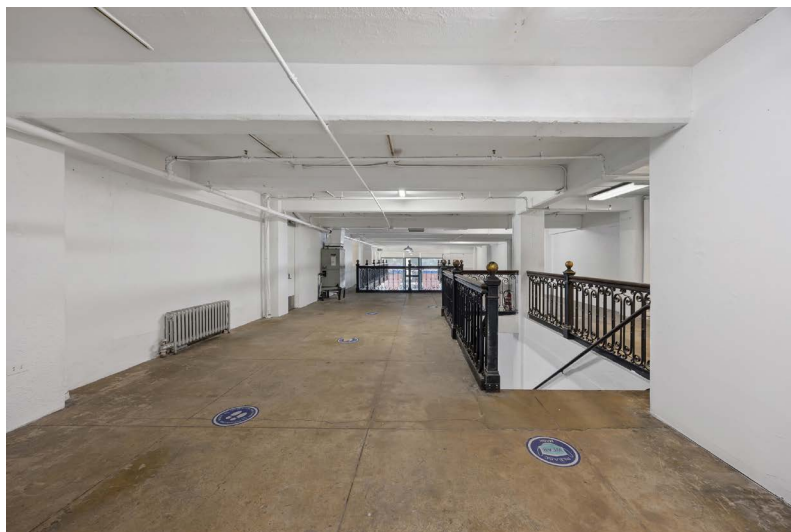
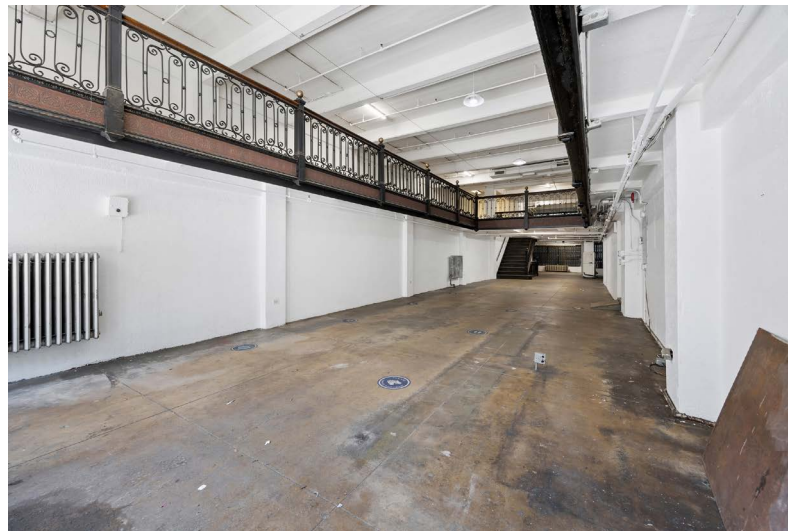
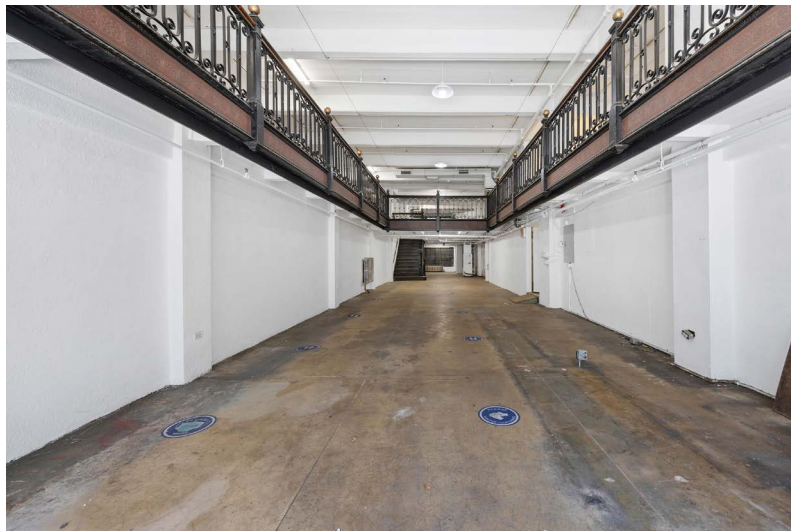
*Joshua Berkun*  
JBerkun@ksrny.com  
516.459.9251

*Hunter Lazan*  
HLazan@ksrny.com  
772.559.5195

# 220 East 23<sup>rd</sup> Street

BETWEEN 2<sup>ND</sup> AND 3<sup>RD</sup> AVENUES  
GRAMERCY PARK

CLICK THE IMAGES FOR VIRTUAL TOUR



CONTACT OUR BROKERS FOR MORE INFORMATION:



All information supplied in this marketing presentation and/or flyer is from sources deemed reliable and is furnished subject to errors, omissions, modifications, removal of listings from sale/lease and to any listing condition. Any square footage, dimensions, floor plans and/or technical data set forth are approximations and are subject to further elaboration/confirmation.

*Ori Melloul*  
OMelloul@ksrny.com  
347.377.1392

*Joshua Berkun*  
JBerkun@ksrny.com  
516.459.9251

*Hunter Lazan*  
HLazan@ksrny.com  
772.559.5195