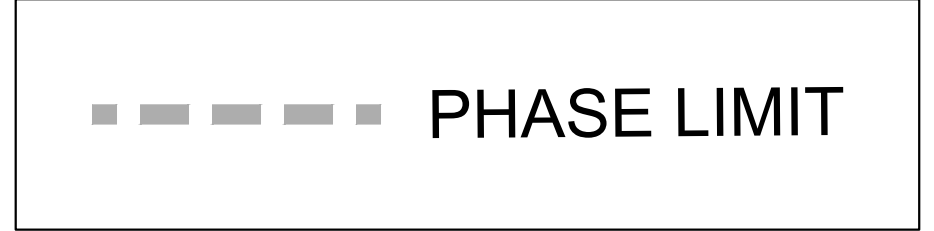
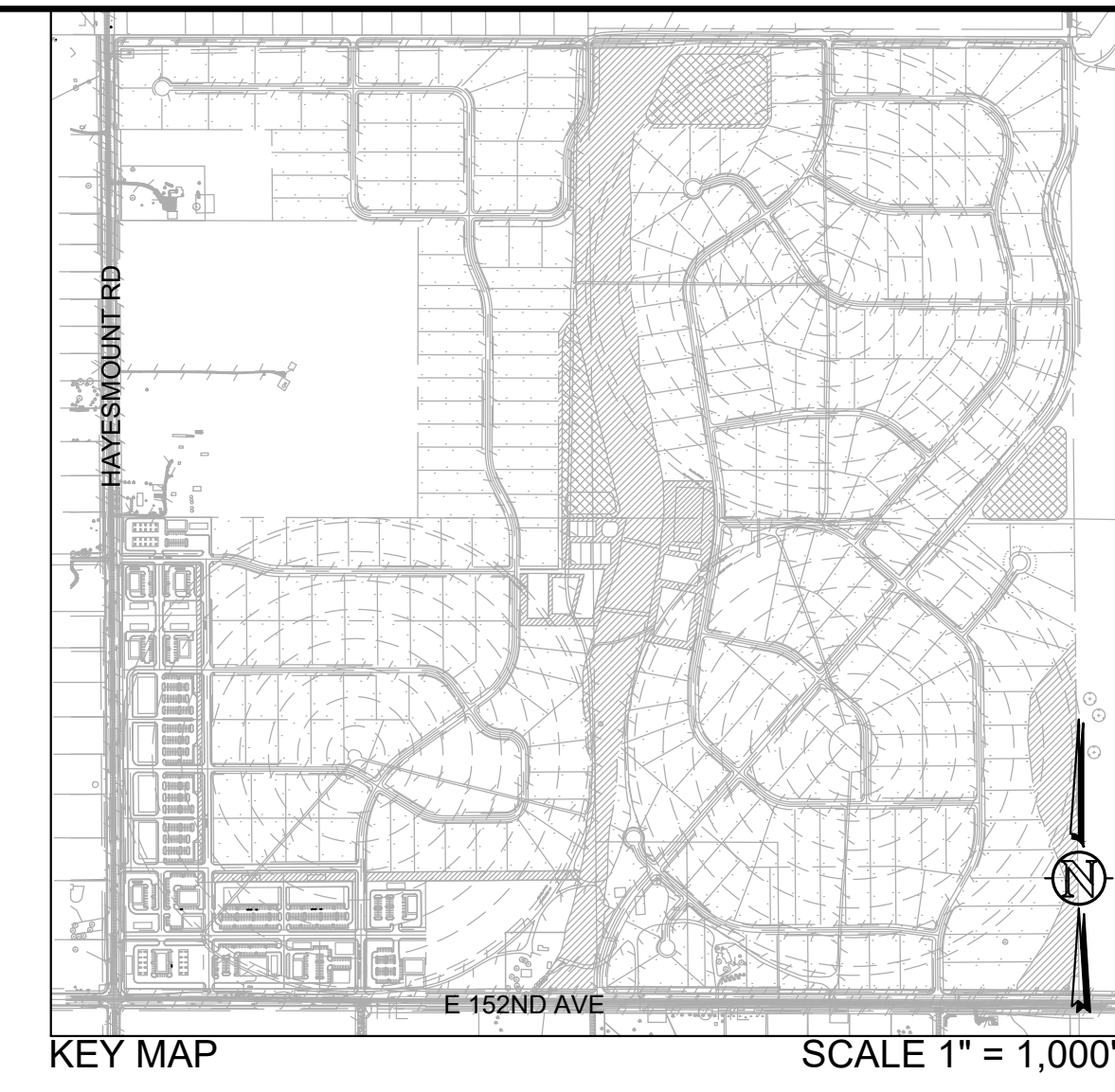
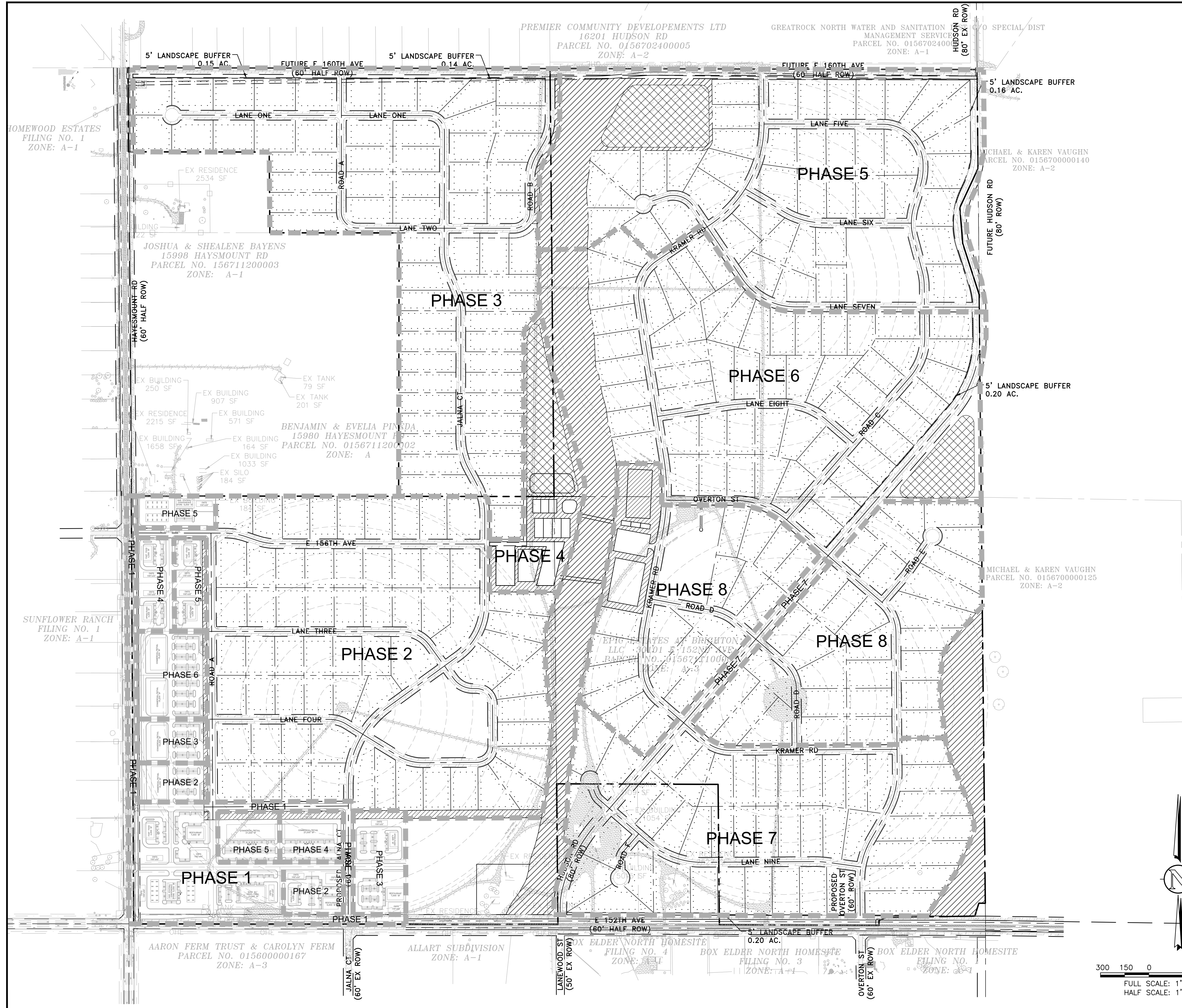
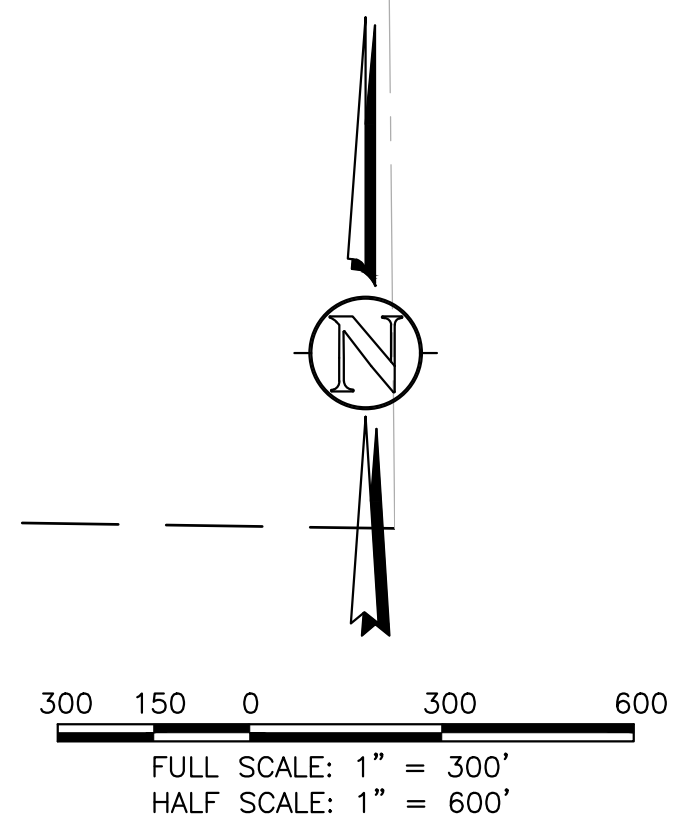


T:\0398_001_00-EPIC ESTATES-BRIGHTON\DWG\CDS\0398-001-WECCDS-00-1-00.dwg, C1:01P-PHASE, 11/20/2023 3:59:42 PM, DWG To PDF.pc3, WEC 24'36", WEC 24'36"



PHASE PLAN TABLE	
PHASE	# OF ESTATE UNITS
PHASE 1	0
PHASE 2	63
PHASE 3	62
PHASE 4	0
PHASE 5	42
PHASE 6	55
PHASE 7	42
PHASE 8	46
TOTAL	310

FULL RIGHT OF WAY IMPROVEMENTS INCLUDE ALL GRADING, UTILITIES, SUBGRADES, PAVEMENTS, SIGNAGE, STRIPING, AND HARDSCAPE WITHIN RIGHT OF WAY. OVERLOT GRADING SHALL ALSO OCCUR IN EACH PHASE NOTED OUTSIDE OF RIGHT OF WAY IMPROVEMENTS.



127 S. DENVER AVE
 FT. LUTON, CO 80621
 www.westerneci.com
 email@westerneci.com
 (720) 885-9951
 FAX (720) 294-1330

Western Engineering Consultants, Inc LLC

DATE: 07/21/22 CFC
 REVISION: 07/21/22 CFC
 NO. 01
 NAME: SUBMITTAL
 NO. 01
 NAME: EPIC ESTATES
 CONTACT: EPIC ESTATES MANAGEMENT, 708 HORIZON STREET, FLOWER MOUND, TX 75022
 email@epicestates.com

PHASING PLAN
EPIC ESTATES
E 152ND AVE & HAYESMOUNT RD
 CITY OF BRIGHTON, ADAMS COUNTY, COLORADO

Dig Safely.
 CALL UNCC
 THREE WORKING DAYS BEFORE YOU DIG
 1-800-922-1987
 www.uncc.org
 UTILITY NOTIFICATION CENTER OF COLORADO

FOR REVIEW

ONLY VALID FOR CONSTRUCTION
 SIGN & BRUSH SIGNATURE
 USE ON EACH SHEET

INITIAL PLAN
 RELEASE: 07/21/22
 DESIGNED BY: CFC
 DRAWN BY: CFC
 CHECKED BY: CFC

PROJECT NO.
 01-0398.001.00
 DOC CON #
 C1.01P-PHASING

SHEET
 C1.01P