

# San Jose Retail Spaces For Lease Campbell/Cambrian Area

±1,566 SF & ±1,350 SF Park  
Cirone Shopping Center



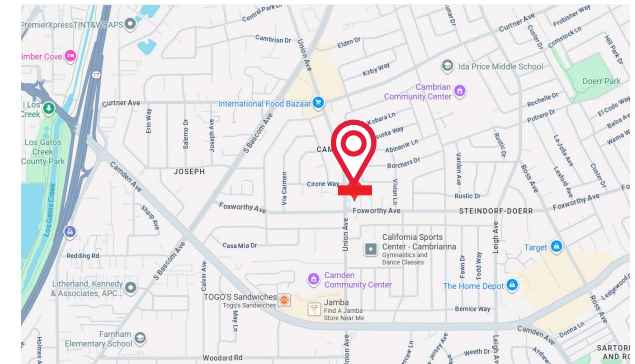
2980 & 2990 UNION AVENUE | SAN JOSE, CA.

## HIGHLIGHTS:

- ±1,566 SF
- ±1,350 SF - End Cap
- Monument Signage
- Great Windowline
- Exclusive Patio Use
- Call for Lease Rate & To Tour!

## LOCATION:

- Corner Space with Excellent Visibility
- Building Signage on Foxworthy and also on Union Avenues
- Easy Access to Hwy. 85 & 17



Please Contact Exclusive Agent:

**JULIE MERCIK**  
DRE Lic. #00851651

jmercik@ritchiecommercial.com  
1.408.234.1599

The information contained herein has been obtained from sources we deem reliable.  
We cannot, however assume responsibility for its accuracy.



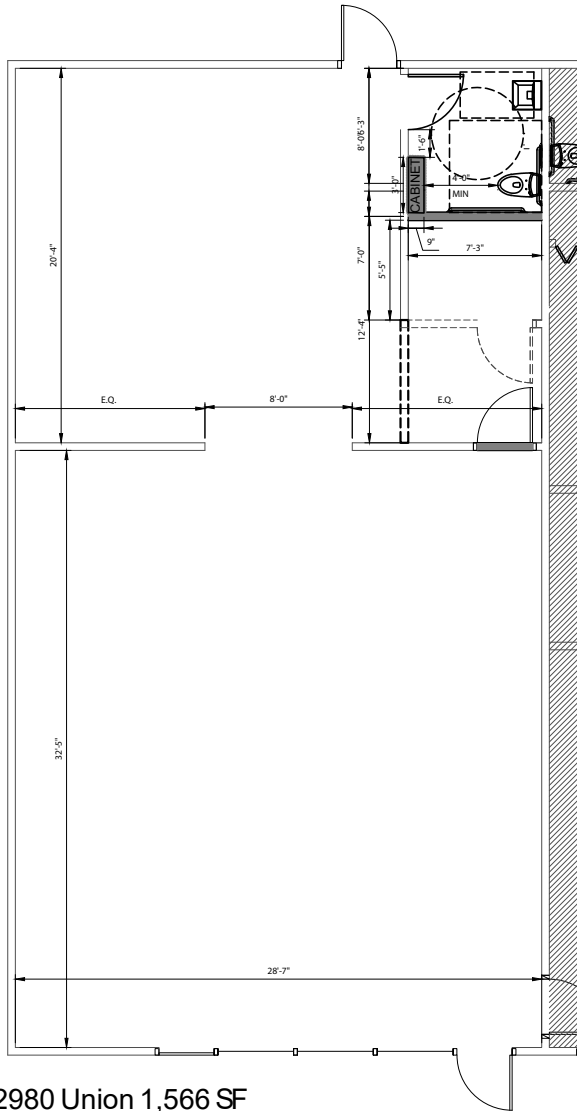
**RITCHIE** *Commercial*  
RESPONSIBLE REAL ESTATE

34 W. SANTA CLARA STREET, SAN JOSE, CA 95113  
DRE # 01209214 | [www.ritchiecommercial.com](http://www.ritchiecommercial.com)  
1 408.971.2700 f 1 408.971.1600

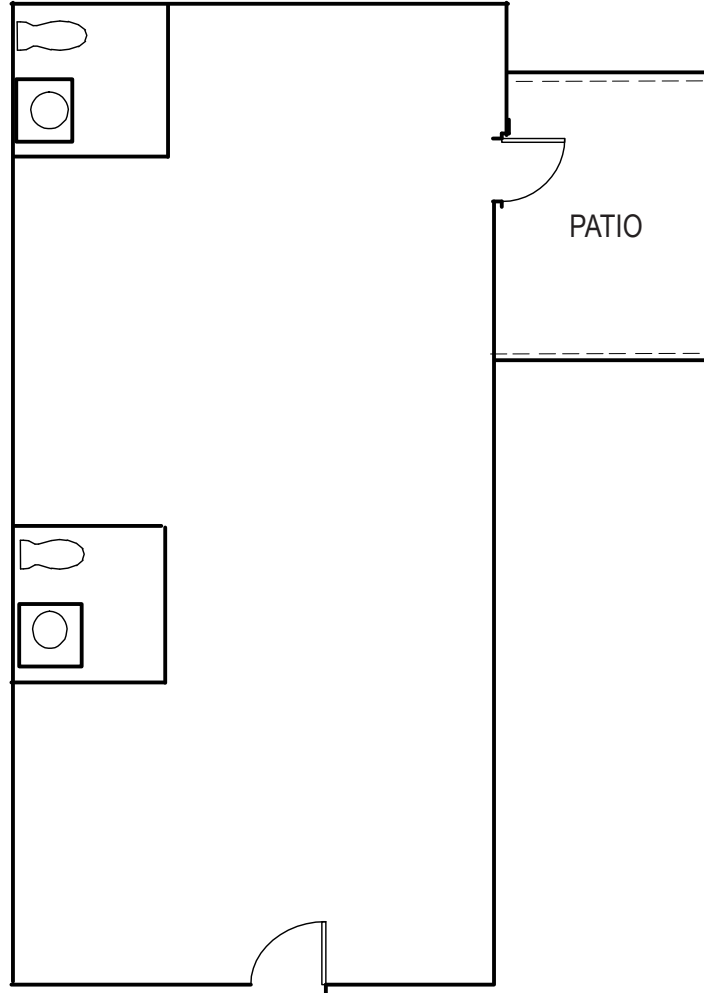
San Francisco | San Jose | Santa Cruz

# San Jose Retail Spaces For Lease Campbell/Cambrian Area

±1,566 SF & ±1,350 SF  
Park Cirone Shopping Center



2980 Union 1,566 SF



2990 Union 1,350 SF

## DEMOGRAPHICS:

	2-Miles	5-Miles
Household Income	\$170,107	\$164,392
Population	85,012	472,733

Statistics provided by Costar



**RITCHIE** Commercial  
RESPONSIBLE REAL ESTATE

34 W. SANTA CLARA STREET, SAN JOSE, CA 95113

DRE # 01209214 | [www.ritchiecommercial.com](http://www.ritchiecommercial.com)

1 408.971.2700 f 1 408.971.1600

Please Contact Exclusive Agent:

**JULIE MERCIK**  
DRE Lic. #00851651

[jmercik@ritchiecommercial.com](mailto:jmercik@ritchiecommercial.com)  
1.408.234.1599

Floor Plans Not to Scale

The information contained herein has been obtained from sources we deem reliable.  
We cannot, however assume responsibility for its accuracy.

San Francisco | San Jose | Santa Cruz