

ROSEVILLE PARKWAY & GALLERIA BOULEVARD

# 1013

## GALLERIA BLVD

ROSEVILLE, CA

**CBRE**

A MIXED USE PROJECT, OFFICE SPACE AVAILABLE





The Fountains is a ±375,000 square foot mixed use project offering shopping, dining, and Class A office/medical space for local businesses.



Permitted uses include professional office, medical, and other related uses.



Beautifully  
Landscaped



Excellent access to  
Interstate 80 &  
Highway 65



Attractive Water Features



Located directly across  
from the Roseville  
Galleria Mall





Approximately 375,000 square feet of retail, restaurants, and office.



Approximately 23,000 square feet of office space.

The Fountains is a mixed-use project designed on a “Main Street USA” theme with shopping, dining, and office complexes with 10 foot ceilings with expansive glass lines. The unique storefront environment hosts some of the nation’s best speciality lifestyle retailers and restaurants. The center’s architecture, landscape, walkways, music in common areas, dining areas, water features, and other aesthetic elements make it a comfortable and interesting destination for shopping, socializing, and business. The Fountains draws visitors from the surrounding heavily populated trade area.



*f*OUNTAINS  
AT ROSEVILLE

AVAILABLE NOW!

- ±2,076 SQUARE FEET OF OFFICE ABOVE RETAIL





A UNIQUE COLLECTION OF

# 40 STORES & 10 RESTAURANTS

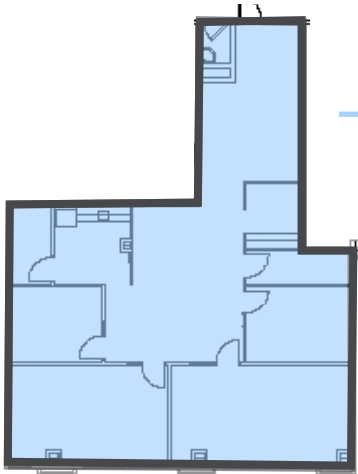
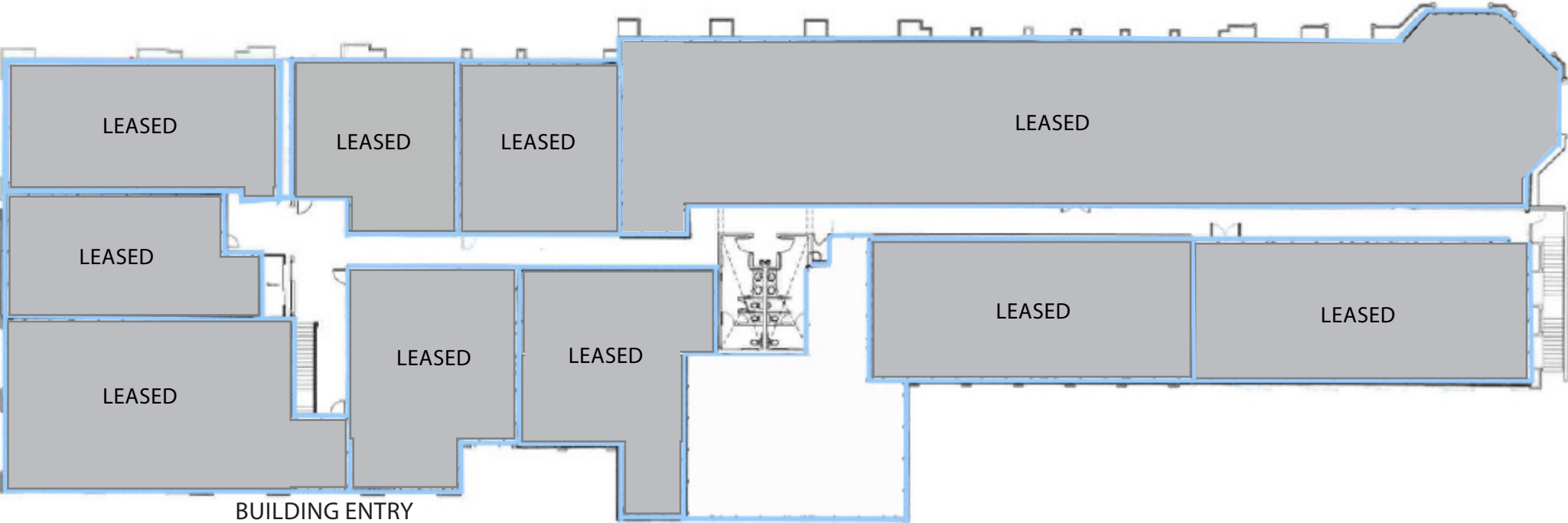
## DIRECTORY



*f*OUNTAINS  
AT ROSEVILLE



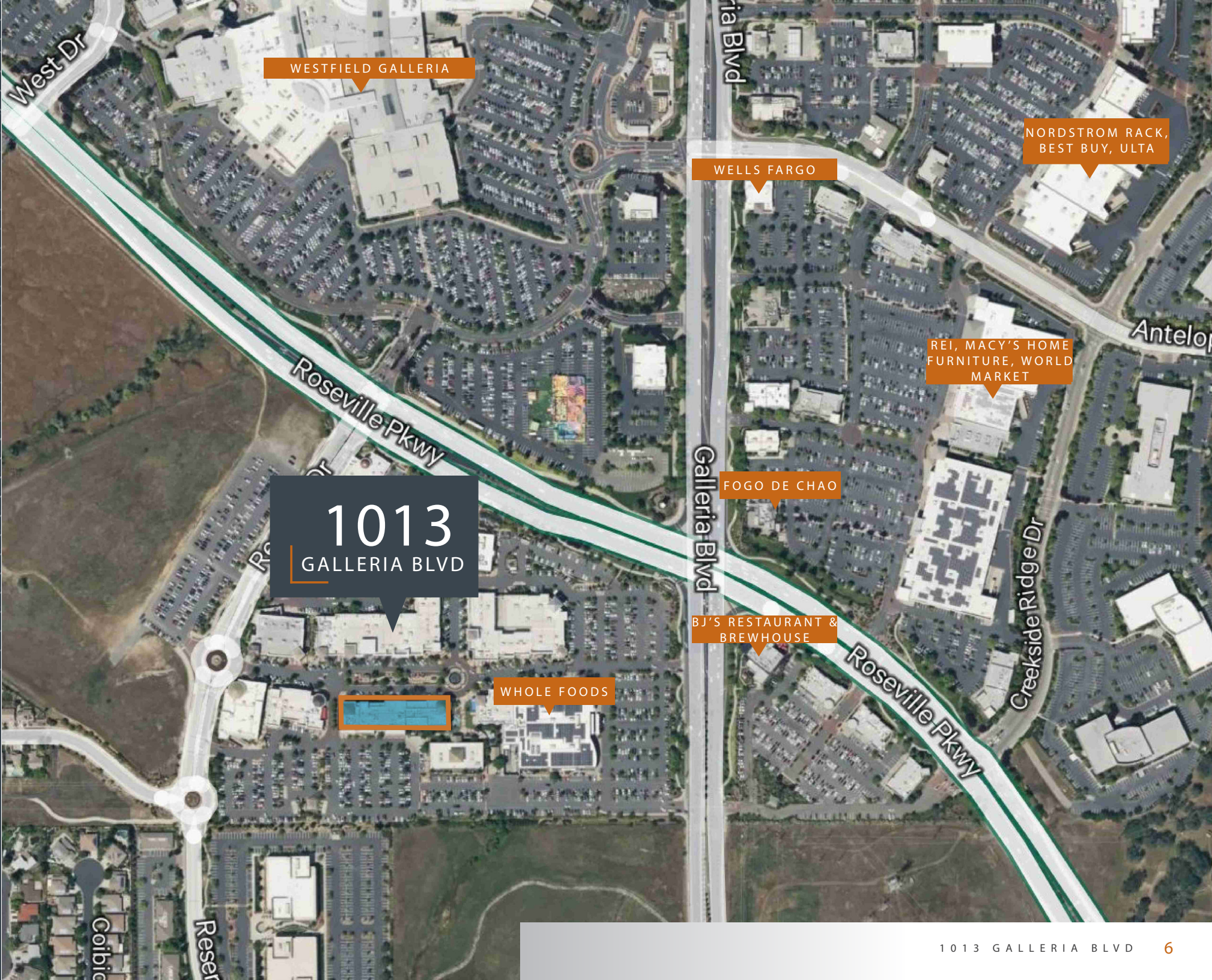
FLOOR PLAN



SUITE 210  
±2,076 RSF  
\$2.35 PSF  
FSG + JANITORIAL  
AVAILABLE NOW

NOT TO SCALE - ALL DIMENSIONS ARE APPROXIMATE.





WESTFIELD GALLERIA

NORDSTROM RACK,  
BEST BUY, ULTA

WELLS FARGO

REI, MACY'S HOME  
FURNITURE, WORLD  
MARKET

1013  
GALLERIA BLVD

FOGO DE CHAO

BJ'S RESTAURANT &  
BREWHOUSE

WHOLE FOODS





# 1013

## GALLERIA BLVD

### EXCLUSIVELY LISTED BY:

KEVIN LARSCHIED  
Executive Vice President  
+1 916 781 4818  
kevin.larscheid@cbre.com  
Lic. 00816790

SCOTT RUSH  
First Vice President  
+1 916 781 4802  
scott.rush@cbre.com  
Lic. 01228497

©2025 CBRE, Inc. All rights reserved. This information has been obtained from sources believed reliable but has not been verified for accuracy or completeness. CBRE, Inc. makes no guarantee, representation or warranty and accepts no responsibility or liability as to the accuracy, completeness, or reliability of the information contained herein. You should conduct a careful, independent investigation of the property and verify all information. Any reliance on this information is solely at your own risk. CBRE and the CBRE logo are service marks of CBRE, Inc. All other marks displayed on this document are the property of their respective owners, and the use of such marks does not imply any affiliation with or endorsement of CBRE. Photos herein are the property of their respective owners. Use of these images without the express written consent of the owner is prohibited.

**CBRE**