

STEAK 'n SHAKE - SPRINGDALE, OH
11470 Princeton Pike, Cincinnati, OH 45246

3,800 SF Available, on 0.96 Acres



Property Details:

- Located on outlot to Cassinelli Square with signalized access
- Great visibility along the main Tri-County corridor with many retailers:



Demographics:

2019 Estimates	1 Mile	3 Mile	5 Mile
Population	5,781	43,649	143,228
Households	2,582	18,715	61,167
Average Household Income	\$66,202	\$69,575	\$86,616
Total Number of Employees	15,103	80,885	169,666

Traffic Counts:

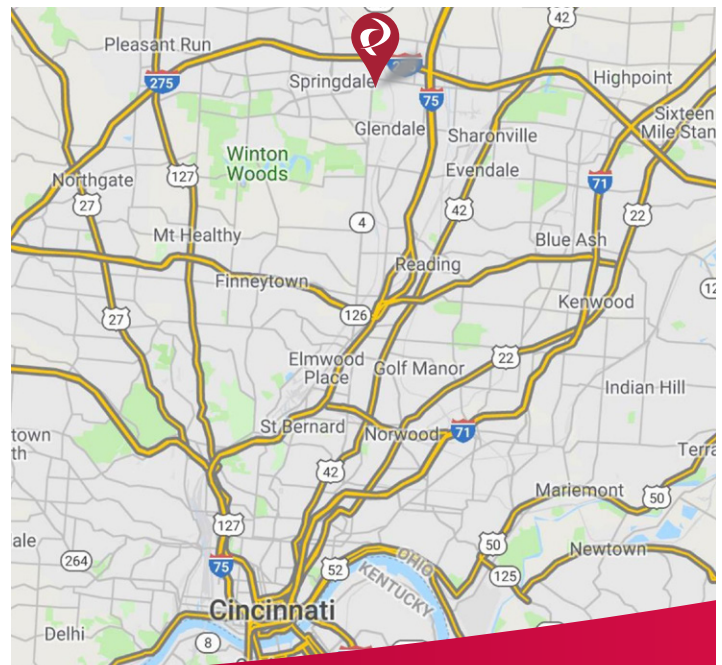
City of Springdale	ADT
Princeton Pike at Kemper Road	39,463

Contact:
Mike Halonen

513.489.3343 x1
mhalonen@edgegp.com

Zachary Schunn

513.489.3343 x5
zschunn@edgegp.com



LET US GIVE YOU AN EDGE



128 East Second Street | Suite B | Covington, KY 41011 | 513.489.3343 | edgegp.com

Proprietary to Edge Real Estate Group and confidential. Information contained herein has been obtained from sources deemed reliable, but is not guaranteed and is subject to change.

STEAK 'n SHAKE - SPRINGDALE, OH
11470 Princetony Pike, Cincinnati, OH 45246

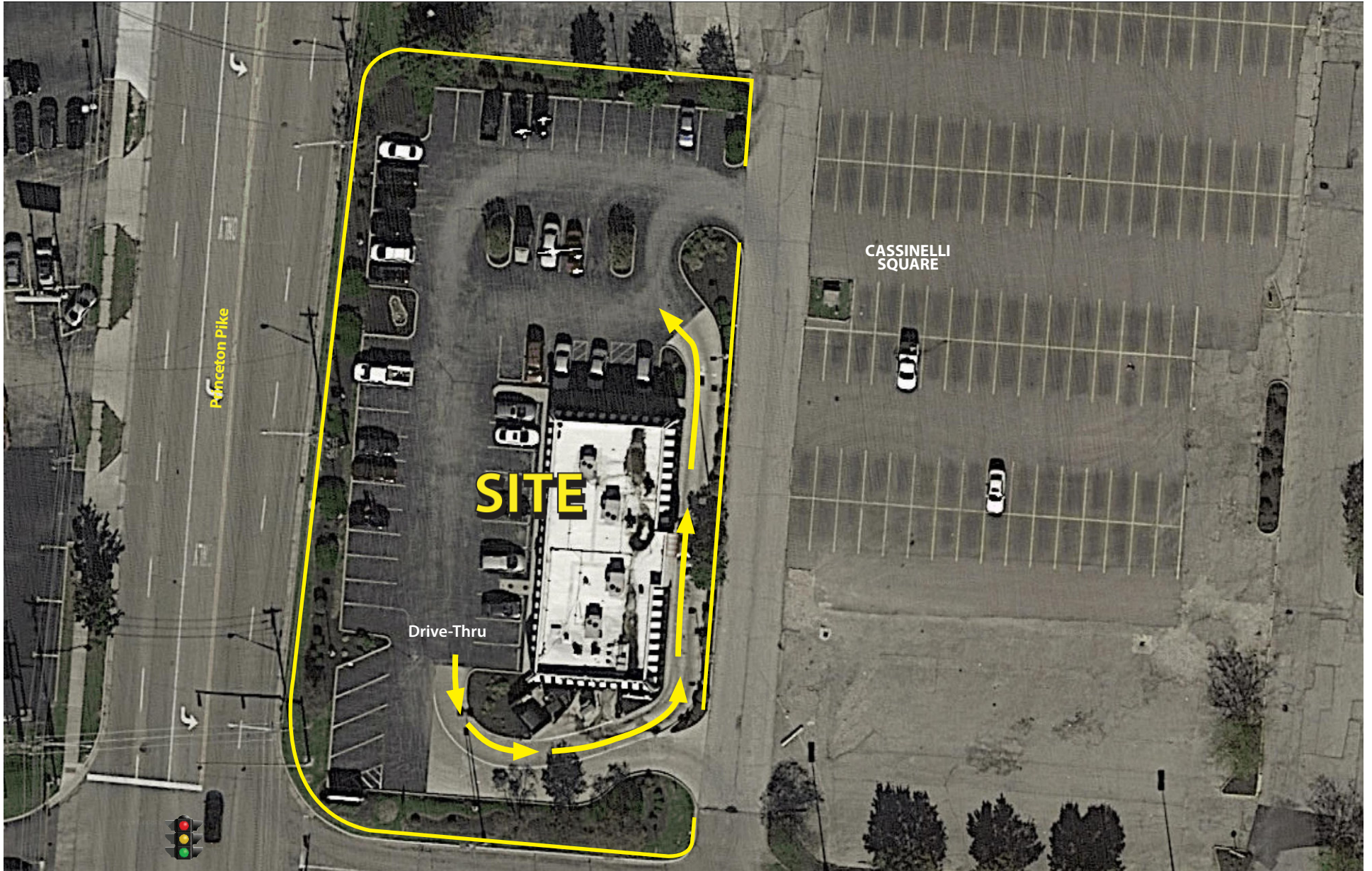


128 East Second Street | Suite B | Covington, KY 41011 | 513.489.3343 | edgegp.com

Proprietary to Edge Real Estate Group and confidential. Information contained herein has been obtained from sources deemed reliable, but is not guaranteed and is subject to change.



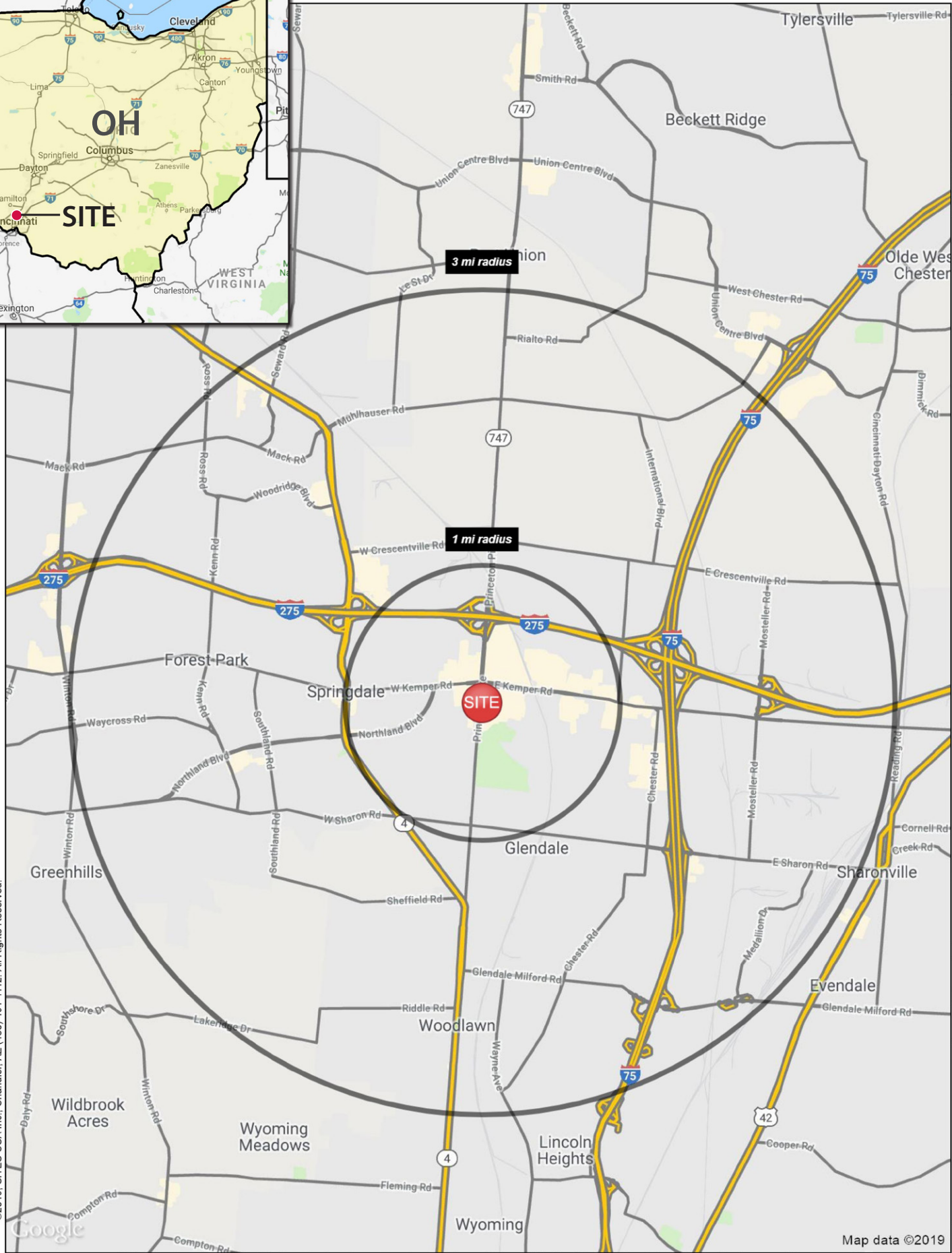
STEAK 'n SHAKE - SPRINGDALE, OH
11470 Princeton Pike, Cincinnati, OH 45246



128 East Second Street | Suite B | Covington, KY 41011 | 513.489.3343 | edgegp.com

Proprietary to Edge Real Estate Group and confidential. Information contained herein has been obtained from sources deemed reliable, but is not guaranteed and is subject to change.

Lat: 39.29367 Long: -84.46730 Zoom: 6.86 mi



©2019, SITES USA Inc., Chandler, AZ (480) 491-1112. All Rights Reserved.



Map data ©2019

Logos are for identification purposes only and may be trademarks of their respective companies

128 East Second Street | Suite B | Covington, KY 41011 | 513.489.3343 | edgegp.com

Proprietary to Edge Real Estate Group and confidential. Information contained herein has been obtained from sources deemed reliable, but is not guaranteed and is subject to change.

SUMMARY PROFILE

2000-2010 Census, 2019 Estimates with 2024 Projections

Calculated using Weighted Block Centroid from Block Groups



Lat/Lon: 39.2859/-84.4666

RS1

11470 Princeton Pike

Springdale, OH 45246

1 mi radius 3 mi radius 5 mi radius

		1 mi radius	3 mi radius	5 mi radius
POPULATION	2019 Estimated Population	5,781	43,649	143,228
	2024 Projected Population	5,806	44,141	145,362
	2010 Census Population	5,700	43,498	140,607
	2000 Census Population	5,318	41,775	140,483
	Projected Annual Growth 2019 to 2024	-	0.2%	0.3%
	Historical Annual Growth 2000 to 2019	0.5%	0.2%	0.1%
	2019 Median Age	39.9	37.1	38.6
HOUSEHOLDS	2019 Estimated Households	2,582	18,715	61,167
	2024 Projected Households	2,563	18,717	61,338
	2010 Census Households	2,426	17,754	57,131
	2000 Census Households	2,346	17,300	56,380
	Projected Annual Growth 2019 to 2024	-0.1%	-	-
	Historical Annual Growth 2000 to 2019	0.5%	0.4%	0.4%
RACE AND ETHNICITY	2019 Estimated White	57.4%	42.7%	59.9%
	2019 Estimated Black or African American	21.6%	43.2%	28.8%
	2019 Estimated Asian or Pacific Islander	3.9%	4.3%	4.7%
	2019 Estimated American Indian or Native Alaskan	0.3%	0.3%	0.2%
	2019 Estimated Other Races	16.8%	9.6%	6.3%
	2019 Estimated Hispanic	28.3%	12.6%	7.1%
INCOME	2019 Estimated Average Household Income	\$66,202	\$69,575	\$86,616
	2019 Estimated Median Household Income	\$57,906	\$61,494	\$72,816
	2019 Estimated Per Capita Income	\$29,768	\$29,950	\$37,061
EDUCATION (AGE 25+)	2019 Estimated Elementary (Grade Level 0 to 8)	12.7%	4.1%	3.2%
	2019 Estimated Some High School (Grade Level 9 to 11)	5.4%	5.8%	5.1%
	2019 Estimated High School Graduate	27.2%	30.1%	28.0%
	2019 Estimated Some College	16.0%	20.8%	18.5%
	2019 Estimated Associates Degree Only	9.1%	8.6%	7.9%
	2019 Estimated Bachelors Degree Only	19.5%	19.2%	22.6%
	2019 Estimated Graduate Degree	10.0%	11.4%	14.6%
BUSINESS	2019 Estimated Total Businesses	815	3,851	8,948
	2019 Estimated Total Employees	15,103	80,885	169,666
	2019 Estimated Employee Population per Business	18.5	21.0	19.0
	2019 Estimated Residential Population per Business	7.1	11.3	16.0

STEAK 'n SHAKE - SPRINGDALE, OH
11470 Princeton Pike, Cincinnati, OH 45246



Contact:
Mike Halonen
513.489.3343 x1
mhalonen@edgegp.com

Zachary Schunn
513.489.3343 x5
zschunn@edgegp.com

128 East Second Street
Suite B
Covington, KY 41011
513.489.3343
edgegp.com

LET US GIVE YOU AN EDGE



128 East Second Street | Suite B | Covington, KY 41011 | 513.489.3343 | edgegp.com

Proprietary to Edge Real Estate Group and confidential. Information contained herein has been obtained from sources deemed reliable, but is not guaranteed and is subject to change.