

159 MAIN STREET

WESTPORT, CT



USE

RETAIL OR RESTAURANT

SIZE

2,400 SF ON MAIN LEVEL
1,707 SF ON LOWER LEVEL

RENT PSF

ON REQUEST

AVAILABLE

AT ONCE

DESCRIPTION: This property boasts a prime location on Westport's premier shopping street, offering a full glass storefront and 12+ foot ceiling heights. The space benefits from newly updated HVAC and utility systems, which were upgraded in 2017. It has entrances from both Main Street and Parker Harding Plaza, the main parking lot, providing excellent accessibility. A large sidewalk area is available for outdoor seating, enhancing the appeal of the location. The property also includes a 1,707 SF full-height lower level. Neighboring tenants include well-known brands such as Madewell, J.Crew, Vuori, Vince, Athleta, Lululemon, Eileen Fisher, and more.

CONTACT:

Sharon Maddern

203.341.7491 | sharon@davidadamrealty.com

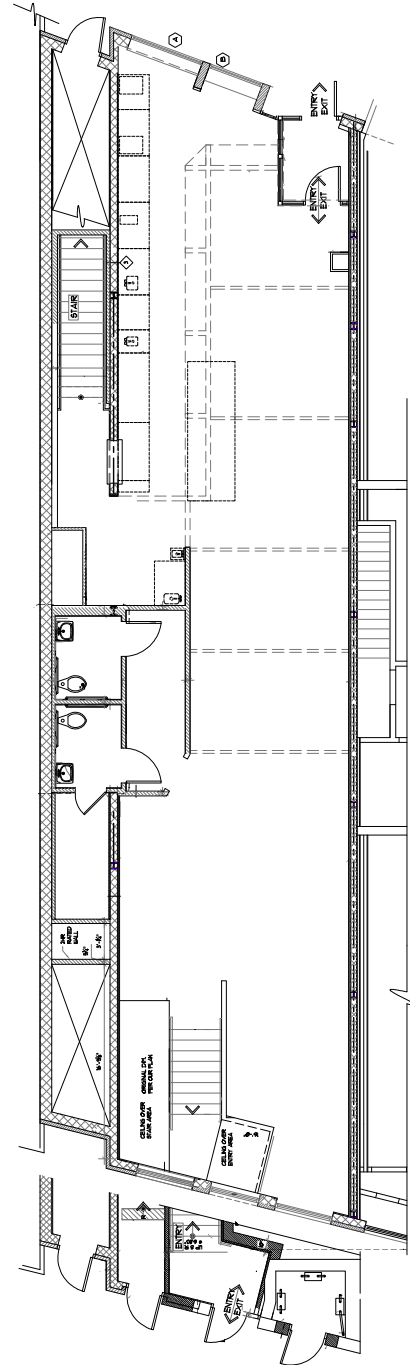
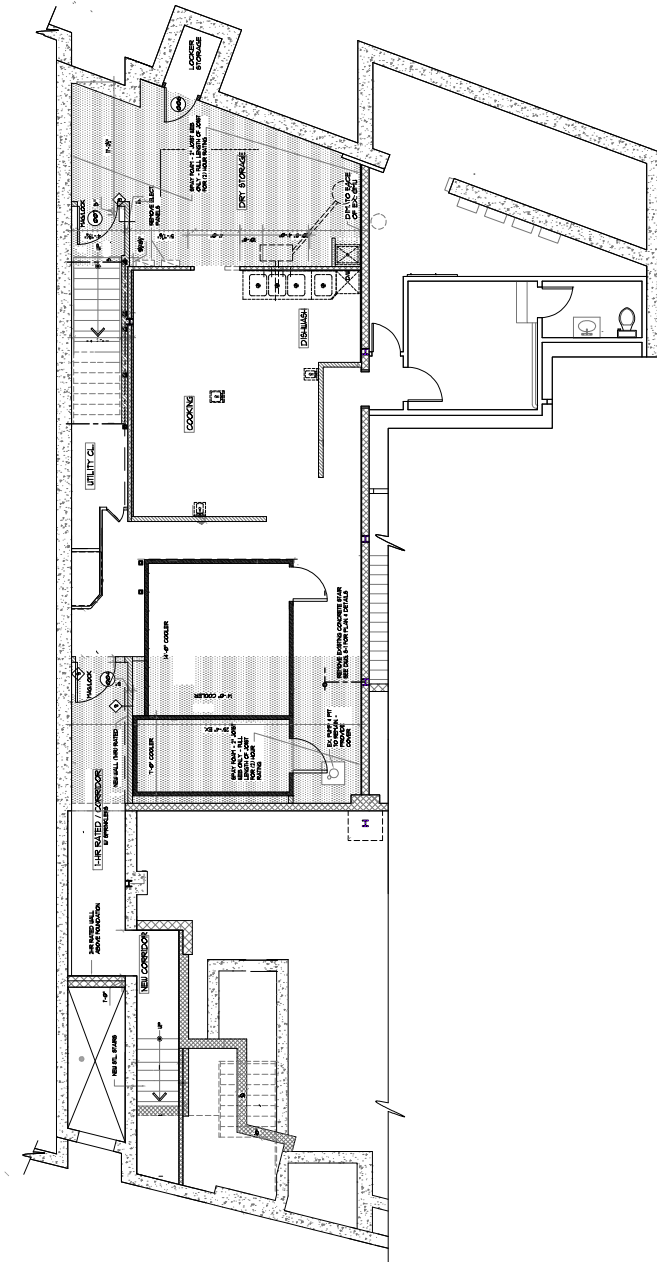


61 Wilton Road, Westport, CT 06880 | Phone 203.221.8148 | Fax 203.341.7494 | www.davidadamrealty.com

The information above has been obtained from sources believed to be reliable. While we do not doubt it's accuracy, we have not verified it and make no guarantee, warranty or representation about it. It is your responsibility to independently confirm its accuracy and completeness.

159 MAIN STREET

WESTPORT, CT



159 MAIN STREET

WESTPORT, CT



61 Wilton Road, Westport, CT 06880 | Phone 203.221.8148 | Fax 203.341.7494 | www.davidadamrealty.com

The information above has been obtained from sources believed to be reliable. While we do not doubt it's accuracy, we have not verified it and make no guarantee, warranty or representation about it. It is your responsibility to independently confirm its accuracy and completeness.