

6.41 +/- Acres | 2265 S Milford Rd, Milford MI



Zoned M-1 Light Industrial

FOR SALE
\$1,200,000

EXCLUSIVELY LISTED BY:

STEVE GRONOW

810-599-5147

Steve@chestnutrealestate.com

CHRISTIAN BUGEJA

810-217-1126

Christian@chestnutrealestate.com



6.41 +/- Acres | 2265 S Milford Rd, Milford MI



Excellent opportunity with this industrial parcel located in highly sought after Milford area. Zoned M-1 light industrial offering a range of industrial applications with close proximity to I-96. **Preliminary plans produced for potential self storage project with over 600 proposed units. Minimal self storage options available in Milford, all with high occupancy.**

- Zoned Light Industrial
- 441' Milford Rd Frontage
- Hard Corner Stop Light Intersection
- Approximately 23,000 vehicles per day

6.41 +/- Acres | 2265 S Milford Rd, Milford MI



Preliminary plans produced, and well received at the township, for potential self storage project with over 600 proposed units. Minimal self storage options available in Milford, all with high occupancy.



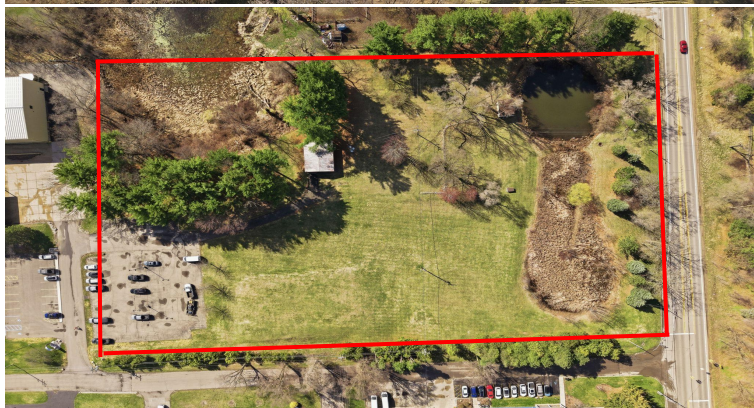
Chestnut Real Estate | 810-599-3984 | ChestnutRealEstate.com
6253 Grand River, Ste 800 Brighton MI 48114

6.41 +/- Acres | 2265 S Milford Rd, Milford MI



Chestnut Real Estate | 810-599-3984 | ChestnutRealEstate.com
6253 Grand River, Ste 800 Brighton MI 48114

6.41 +/- Acres | 2265 S Milford Rd, Milford MI



6.41 +/- Acres | 2265 S Milford Rd, Milford MI

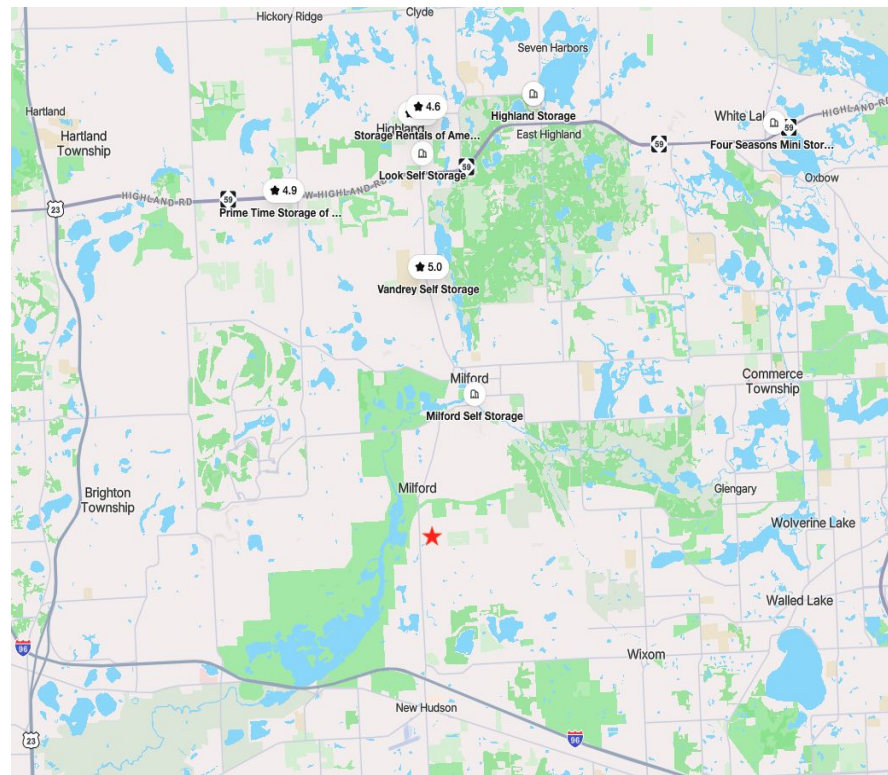
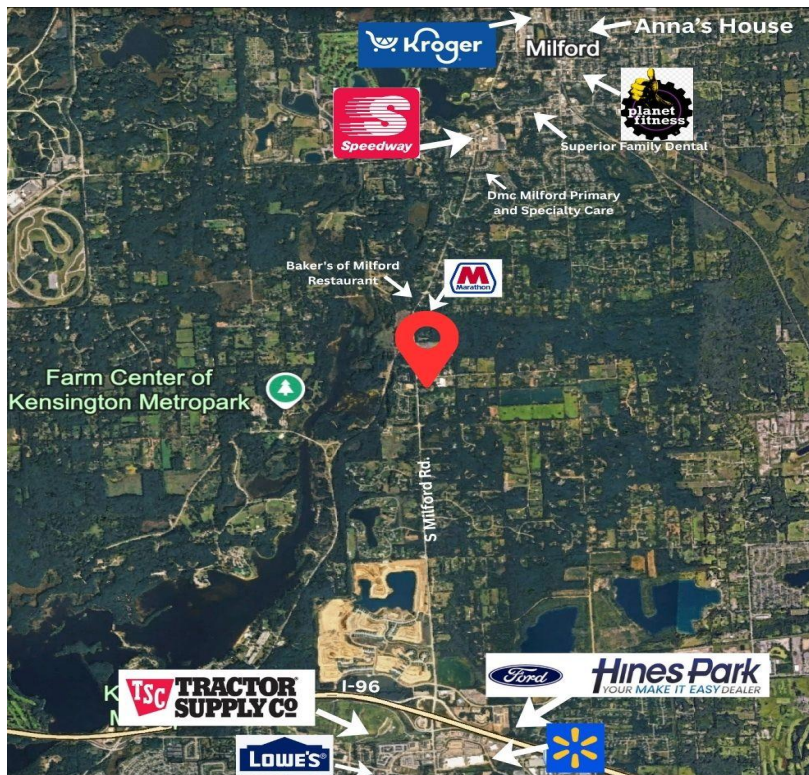


6.41 +/- Acres | 2265 S Milford Rd, Milford MI



Chestnut Real Estate | 810-599-3984 | [ChestnutRealEstate.com](https://www.ChestnutRealEstate.com)
6253 Grand River, Ste 800 Brighton MI 48114

6.41 +/- Acres | 2265 S Milford Rd, Milford MI



Chestnut Real Estate | 810-599-3984 | ChestnutRealEstate.com
6253 Grand River, Ste 800 Brighton MI 48114

6.41 +/- Acres | 2265 S Milford Rd, Milford MI



5 Mile Radius

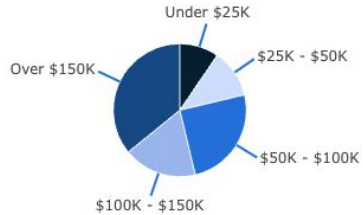
Household Income

\$109.3k

Median Income

\$137.3k
2029 Estimate

↑ **26%**
Growth Rate



Population

105.7k

↑ **2%**
Compared to 103.1k in 2023

↑ **7%**
Compared to 98.1k in 2020

