



CELEBRATION/KISSIMMEE HARD CORNER RETAIL

W IRLO BRONSON MEMORIAL HWY
KISSIMMEE, FL. 34746

FOR LEASE

Jamison Commercial Partners is pleased to present this ~2.25 acre retail development located on a hard corner in the high traffic West 192/Celebration tourist corridor.

PROPERTY OVERVIEW

- » ~3,100 SF end cap available
- » Patio space available
- » Hard corner lighted access
- » ~1.25 miles to the I-4 Entrance
- » ~2.5 miles to the Walt Disney Resort entrance
- » \$99.3K average household within a 3 miles radius
- » US 192 traffic counts: AADT ~60,000
- » 6 parking spaces per 1,000 SF



CHUCK **HOLLIDAY**

SENIOR VICE PRESIDENT | 407.256.2554
CHOLLIDAY@JAMISONCOMMERCIAL.COM

CONNOR **SHIMMEL**

SENIOR ASSOCIATE | 407.374.5188
CSHIMMEL@JAMISONCOMMERCIAL.COM

JAMISONCOMMERCIAL.COM

2023 DEMOGRAPHICS



GENERAL
POPULATION

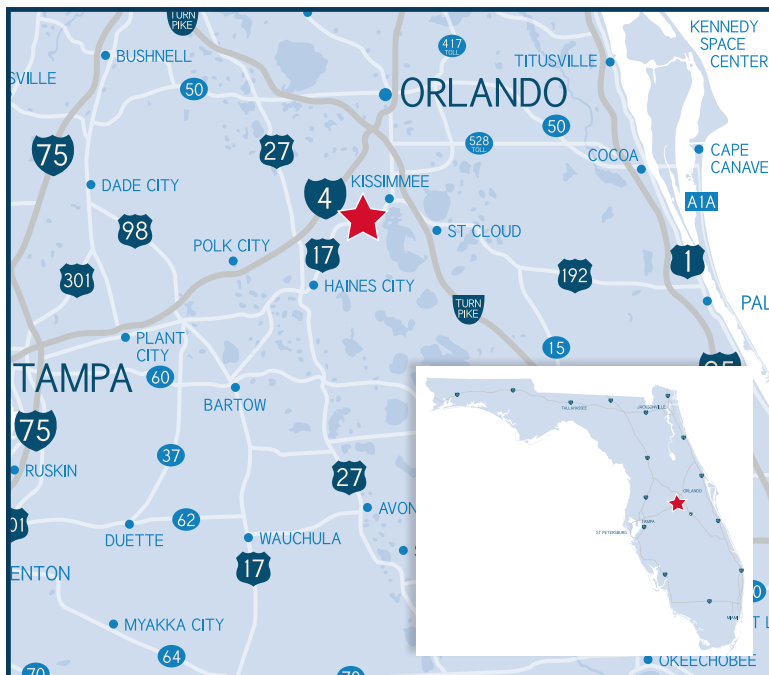


NUMBER OF
HOUSEHOLDS

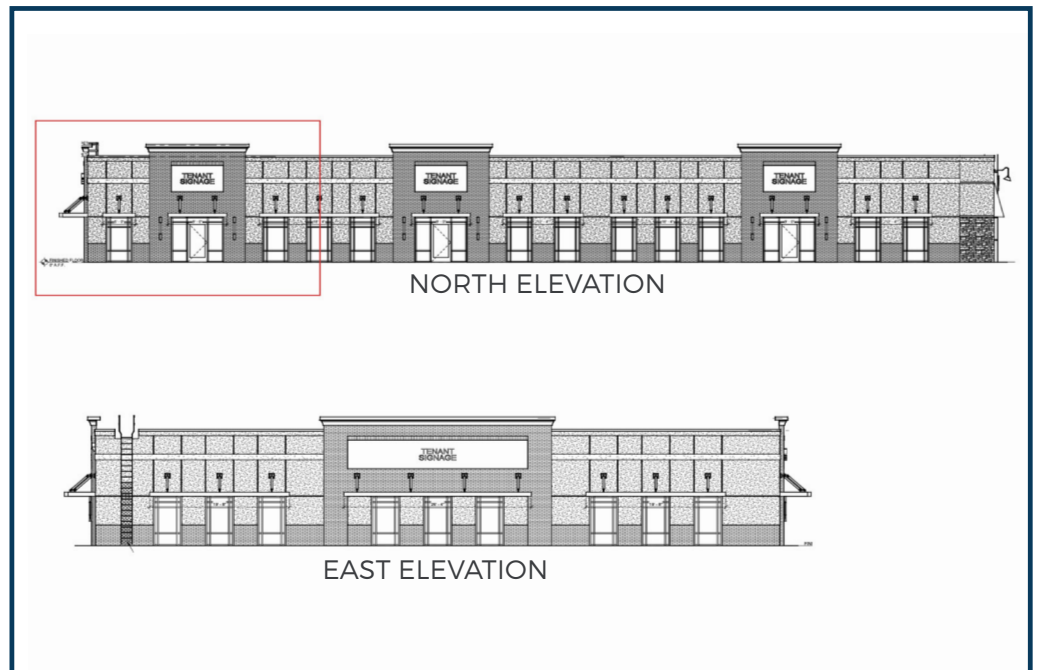


AVG. HOUSEHOLD
INCOME

			3 MILE
29,129	11,458	\$99,263	
			5 MILE
79,708	28,842	\$98,728	
			7 MILE
203,938	73,922	\$92,309	



SITE PLAN



BUILDING ELEVATION

PIN MAP

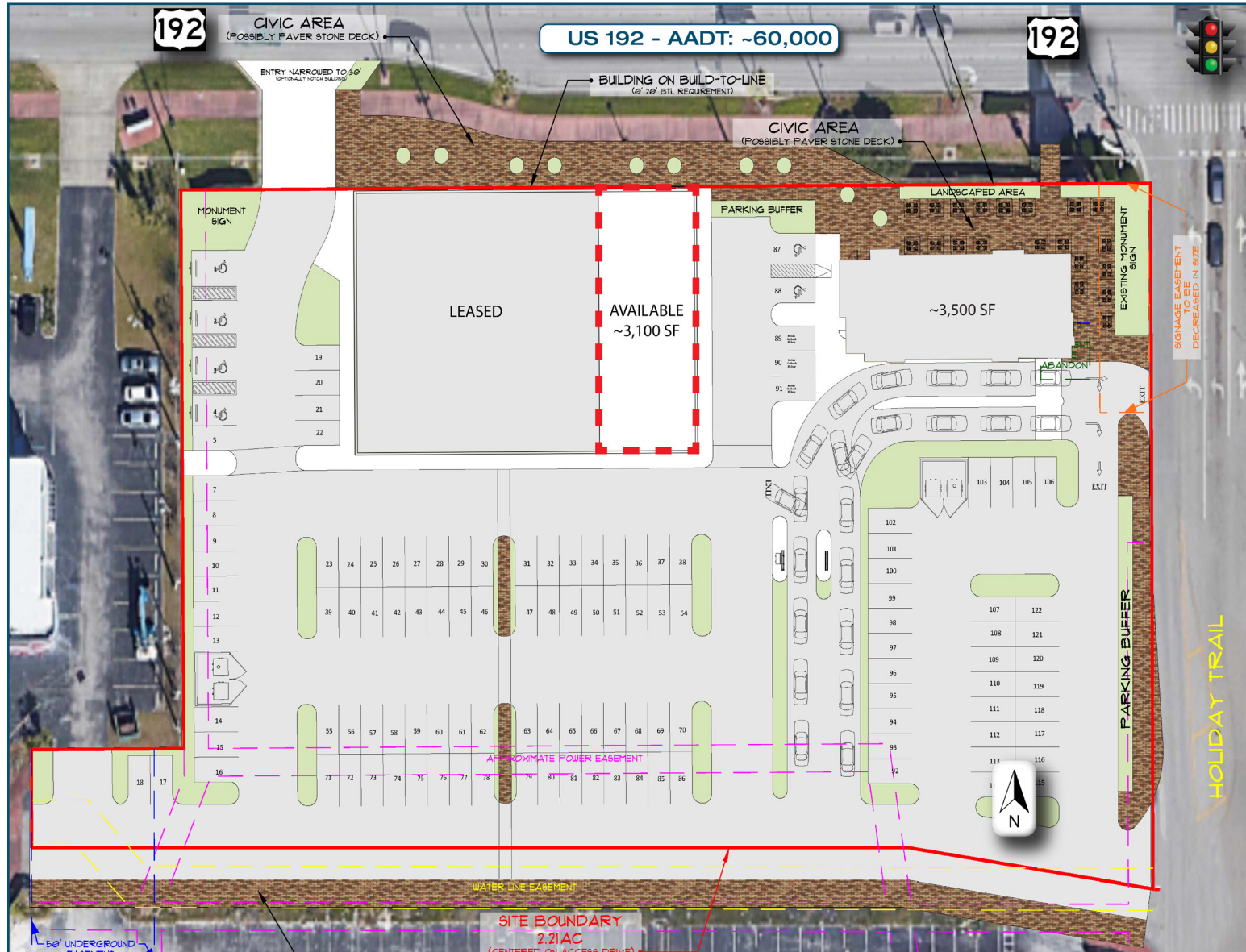


JAMISON COMMERCIAL PARTNERS - 135 W. CENTRAL BLVD., STE. 450, ORLANDO, FL 32801

No warranty or representation, express or implied, is made as to the accuracy of the information contained herein, and same is submitted subject to errors, omissions, change of price, rental or other conditions, withdrawal without notice, and to any special listing conditions imposed by our principals.

JAMISONCOMMERCIAL.COM

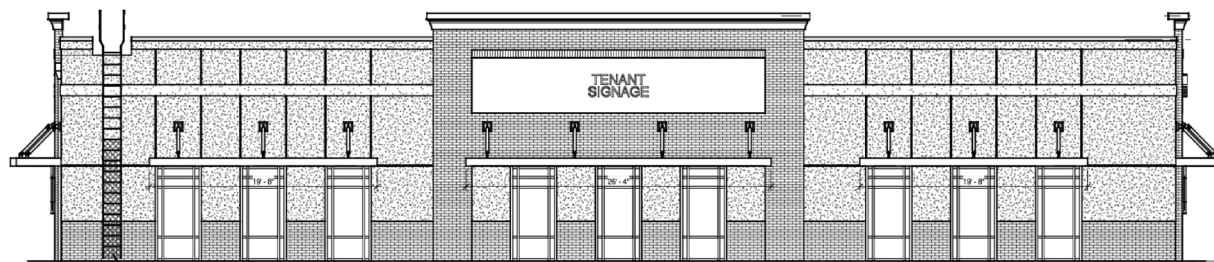
SITE PLAN



BUILDING ELEVATION



NORTH ELEVATION



EAST ELEVATION