

FOR LEASE

LOS ANGELES, CA 90017

# 1015 WILSHIRE BOULEVARD

*8,300 SF High Identity Ground Floor Office Opportunity for Lease*

Secured rooftop parking

Prominent exterior signage

Street level access to the suite

Open floor plan

7 minute walk to 7th St/Metro Center Station

97 Walk Score (walker's paradise)

100 Transit Score (rider's paradise)

**JOHN ANTHONY, SIOR**

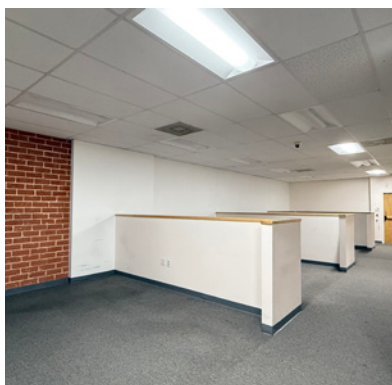
213.225.7218 | john.anthony@kidder.com

LIC N° 01226464

**CHRISTOPHER STECK, CCIM**

213.225.7231 | christopher.steck@kidder.com

LIC N° 01841338



**KIDDER.COM | ANTHONYSTECKTEAM.COM**

This information supplied herein is from sources we deem reliable. It is provided without any representation, warranty, or guarantee, expressed or implied as to its accuracy. Prospective Buyer or Tenant should conduct an independent investigation and verification of all matters deemed to be material, including, but not limited to, statements of income and expenses. Consult your attorney, accountant, or other professional advisor. All Kidder Mathews designs are the sole property of Kidder Mathews. Branded materials and layouts are not authorized for use by any other firm or person.







[KIDDER.COM](http://KIDDER.COM) | [ANTHONYSTECKTEAM.COM](http://ANTHONYSTECKTEAM.COM)

This information supplied herein is from sources we deem reliable. It is provided without any representation, warranty, or guarantee, expressed or implied as to its accuracy. Prospective Buyer or Tenant should conduct an independent investigation and verification of all matters deemed to be material, including, but not limited to, statements of income and expenses. Consult your attorney, accountant, or other professional advisor. All Kidder Mathews designs are the sole property of Kidder Mathews. Branded materials and layouts are not authorized for use by any other firm or person.

# FLOOR PLAN

