

FLEX WAREHOUSE

For Sale

4109 Murray Ave.
Haltom City, Texas



Property Information

LOCATION

The property is less than a mile south of Northeast Loop 820 and less than half a mile east of Beach Street in Haltom City.

Units:

4107 Murray Ave.—Occupied 3,000 Sq. Ft. flex space with 3 office, 2 restrooms, and warehouse with 2 overhead doors.

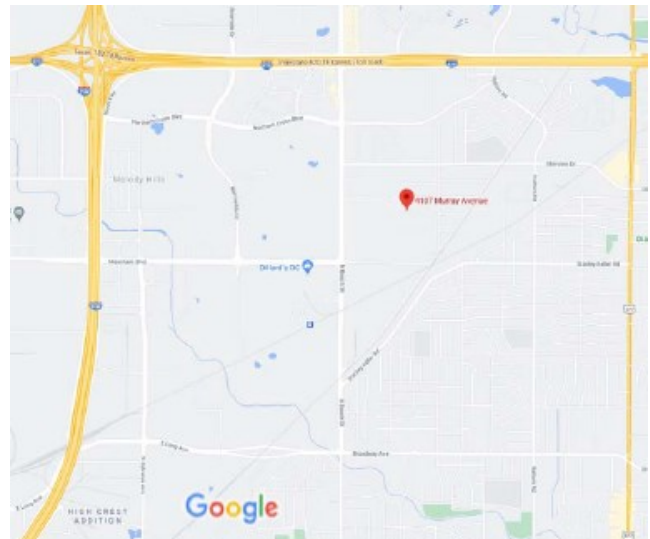
4109 Murray Ave.—Vacant 3,280 Sq. Ft. flex space with 310 sq. ft. of office, 2 restrooms, additional outside storage building and shared fenced storage. The warehouse also has 2 vents and gas heat.

ZONING

“M-2” Industrial

COMMENTS

- 10ft. Overhead doors in each suite
- Fenced outside storage area
- Roof replaced in 2017
- HVAC Replace 2022



For Information

Don D. Phifer
817-427-9545 office
817-239-7100 cell
Phifer@LandDeals.com

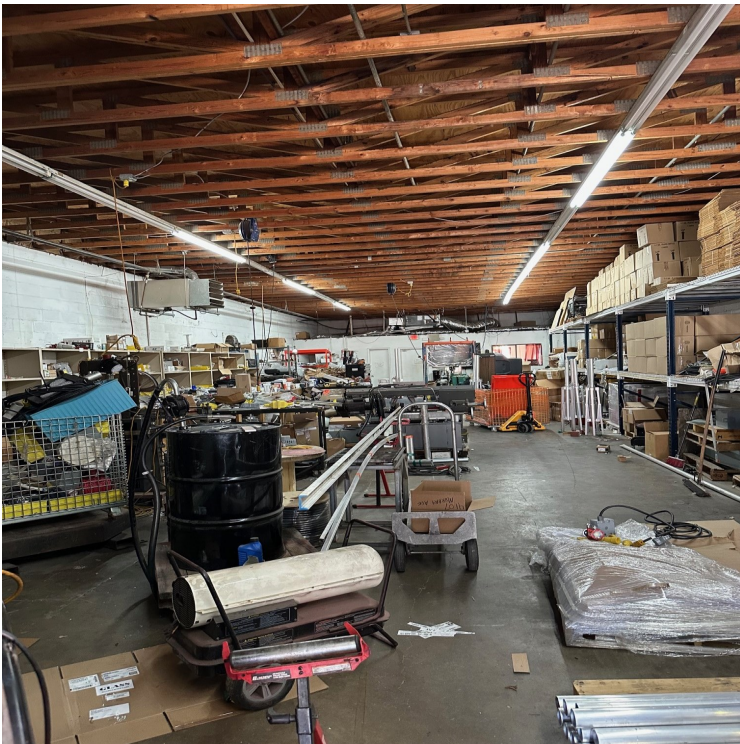
FLEX WAREHOUSE FOR SALE

4107 Murray Ave.
Haltom City, Texas



FLEX WAREHOUSE FOR SALE or LEASE

4109 Murray Ave.
Haltom City, Texas



FLEX WAREHOUSE FOR SALE

4107 and 4109 Murray Ave.
Haltom City, Texas

