

601 Hillview Dr.  
Altamonte Springs, Florida 32714

# Industrial Outdoor Storage

.5 AC Up To ±9.61 AC Industrial Outdoor Storage Land  
Warehouse Storage - Office Space

Multiple Lots Available for Lease | Please Call For Pricing





# ±2.65 - ±4.66 AC Industrial Outdoor Storage

UNIT IOS #3 and #5

670 Hillview Dr.  
Altamonte Springs, Florida 32714

IOS Lots Available for Lease | Please Call For Pricing



## Industrial Outdoor Storage

This site is located at the southwest corner of Discovery Court and Hillview Dr. in the Northern Orlando submarket, perfectly positioned for businesses requiring extensive lay down yard and parking capabilities. The property features multiple roadway access points and is situated within 48,519 rooftops in a 3-mile radius. It is directly off SR-434, SR-414, and SR-436, with easy access to Interstate-4, making it an ideal location for logistical and operational efficiency.

### Property Highlights:

- + ±2.65 to ±4.66 AC Available
- + Secured Fenced Yard
- + All-Weather Surface
- + Zoning: C-3
- + Electric Available

## Contact Us For Leasing

**David Murphy**  
Vice Chairman  
+1 407 404 5020  
david.murphy@cbre.com

**Monica Wonus**  
Senior Vice President  
+1 407 404 5042  
monica.wonus@cbre.com

**Gaby Gissy**  
Associate  
+1 407 404 5012  
gaby.gissy@cbre.com

**Lee Earle**  
Client Services Specialist  
+1 407 404 5095  
lee.earle@cbre.com



# .5 AC IOS Fully Improved Yard

UNIT IOS #10

601 Hillview Dr.  
Altamonte Springs, Florida 32714

INDUSTRIAL OUTSIDE STORAGE WITH OFFICE SPACE



## Property Highlights:

- + 1,768 SF air conditioned office space with two restrooms, a kitchen and conference room.
- + .55 AC fully improved yard area with perimeter fencing and rolling gate.
- + ±5,063 SF Warehouse Storage

## Contact Us For Leasing

**David Murphy**

Vice Chairman  
+1 407 404 5020  
david.murphy@cbre.com

**Monica Wonus**

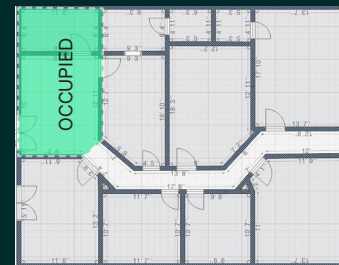
Senior Vice President  
+1 407 404 5042  
monica.wonus@cbre.com

**Gaby Gissy**

Associate  
+1 407 404 5012  
gaby.gissy@cbre.com

**Lee Earle**

Client Services Specialist  
+1 407 404 5095  
lee.earle@cbre.com





# 2.05 AC Fully Improved Property

UNIT IOS #11

601 Hillview Dr.  
Altamonte Springs, Florida 32714

43,372 SF | 3 METAL GROUND LEVEL BUILDINGS



## Fully Improved Property

This site is located at the southwest corner of Discovery Court and Hillview Dr. in the Northern Orlando submarket, perfectly positioned for businesses requiring extensive lay down yard and parking capabilities. The property features multiple roadway access points and is situated within 48,519 rooftops in a 3-mile radius. It is directly off SR-434, SR-414, and SR-436, with easy access to Interstate-4, making it an ideal location for logistical and operational efficiency.

## Property Highlights:

- + 2.05 AC with three metal ground level buildings
- + Building 1 – 12,995 SF
- + Building 2 – 16,425 SF
- + Building 3 – 12,952 SF

## Contact Us For Leasing

**David Murphy**

Vice Chairman  
+1 407 404 5020  
david.murphy@cbre.com

**Monica Wonus**

Senior Vice President  
+1 407 404 5042  
monica.wonus@cbre.com

**Gaby Gissy**

Associate  
+1 407 404 5012  
gaby.gissy@cbre.com

**Lee Earle**

Client Services Specialist  
+1 407 404 5095  
lee.earle@cbre.com



# .33 AC Industrial Outdoor Storage

UNIT IOS #15

601 Hillview Dr.  
Altamonte Springs, Florida 32714

FULLY STABILIZED PROPERTY



± .33 Acres

## Permitted & Ideal Uses

- + Zoning: C-3
- + General Commercial & Wholesale
- + Parking Of Semi-Tractor Trailers & Cargo Trailer Boxes
- + Lumber Yards
- + Machinery Sales & Storage
- + Contractors' Equipment Storage Yards
- + Fleet Parking

## Property Highlights:

- + ± .33 AC
- + Access off Discovery Court with Asphalt Milling
- + Secure Perimeter and its own Manual Gate
- + Dimensions are 61' wide by 233' deep

## Contact Us For Leasing

### David Murphy

Vice Chairman  
+1 407 404 5020  
david.murphy@cbre.com

### Monica Wonus

Senior Vice President  
+1 407 404 5042  
monica.wonus@cbre.com

### Gaby Gissy

Associate  
+1 407 404 5012  
gaby.gissy@cbre.com

### Lee Earle

Client Services Specialist  
+1 407 404 5095  
lee.earle@cbre.com



# .32 AC Industrial Outdoor Storage with $\pm 8,500$ SF Covered Storage

UNIT IOS #14

670 Hillview Dr.  
Altamonte Springs, Florida 32714



## Industrial Outdoor Storage

### Property Highlights:

- +  $\pm 8,500$  SF of Covered Storage Area
- + Wash Bay Exclusive Access
- + Direct Access Via Separate Secured Private Electric Entrance Gate
- + .32 AC Available

## Contact Us For Leasing

### David Murphy

Vice Chairman  
+1 407 404 5020  
david.murphy@cbre.com

### Monica Wonus

Senior Vice President  
+1 407 404 5042  
monica.wonus@cbre.com

### Gaby Gissy

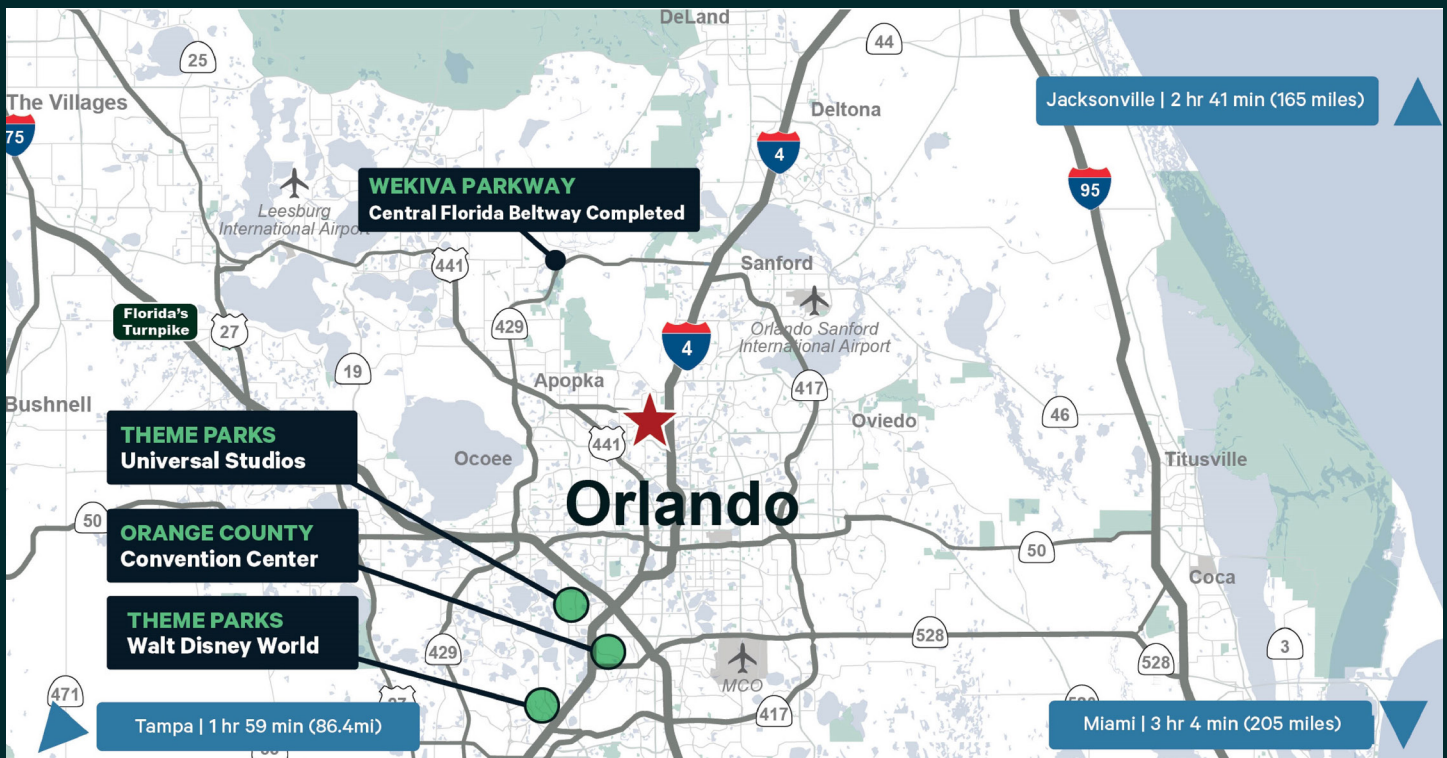
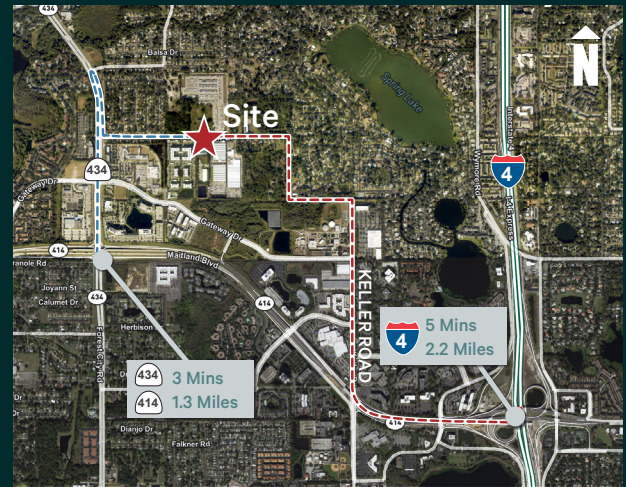
Associate  
+1 407 404 5012  
gaby.gissy@cbre.com

### Lee Earle

Client Services Specialist  
+1 407 404 5095  
lee.earle@cbre.com

# KEY DISTANCES

SR 434	1.3 Mi   3 Min
SR 436	2.2 Mi   5 Min
Interstate 4	2.2 Mi   5 Mins
SR 441	3.5 Mi   7 Min
SR - 429	9.5 Mi   13 Min
Florida Turnpike	17.5 Mi   20 Mins



## Contact Us For Leasing

**David Murphy**

Vice Chairman

+1 407 404 5020

david.murphy@cbre.com

**Monica Wonus**

Senior Vice President

+1 407 404 5042

monica.wonus@cbre.com

**Gaby Gissy**

Associate

+1 407 404 5012

gaby.gissy@cbre.com

**Lee Earle**

Client Services Specialist

+1 407 404 5095

lee.earle@cbre.com

© 2024 CBRE, Inc. All rights reserved. This information has been obtained from sources believed reliable but has not been verified for accuracy or completeness. CBRE, Inc. makes no guarantee, representation or warranty and accepts no responsibility or liability as to the accuracy, completeness, or reliability of the information contained herein. You should conduct a careful, independent investigation of the property and verify all information. Any reliance on this information is solely at your own risk. CBRE and the CBRE logo are service marks of CBRE, Inc. All other marks displayed on this document are the property of their respective owners, and the use of such marks does not imply any affiliation with or endorsement of CBRE. Photos herein are the property of their respective owners. Use of these images without the express written consent of the owner is prohibited.



SCAN TO  
SHARE LISTING



**RAMSER**  
DEVELOPMENT COMPANY

**CBRE**