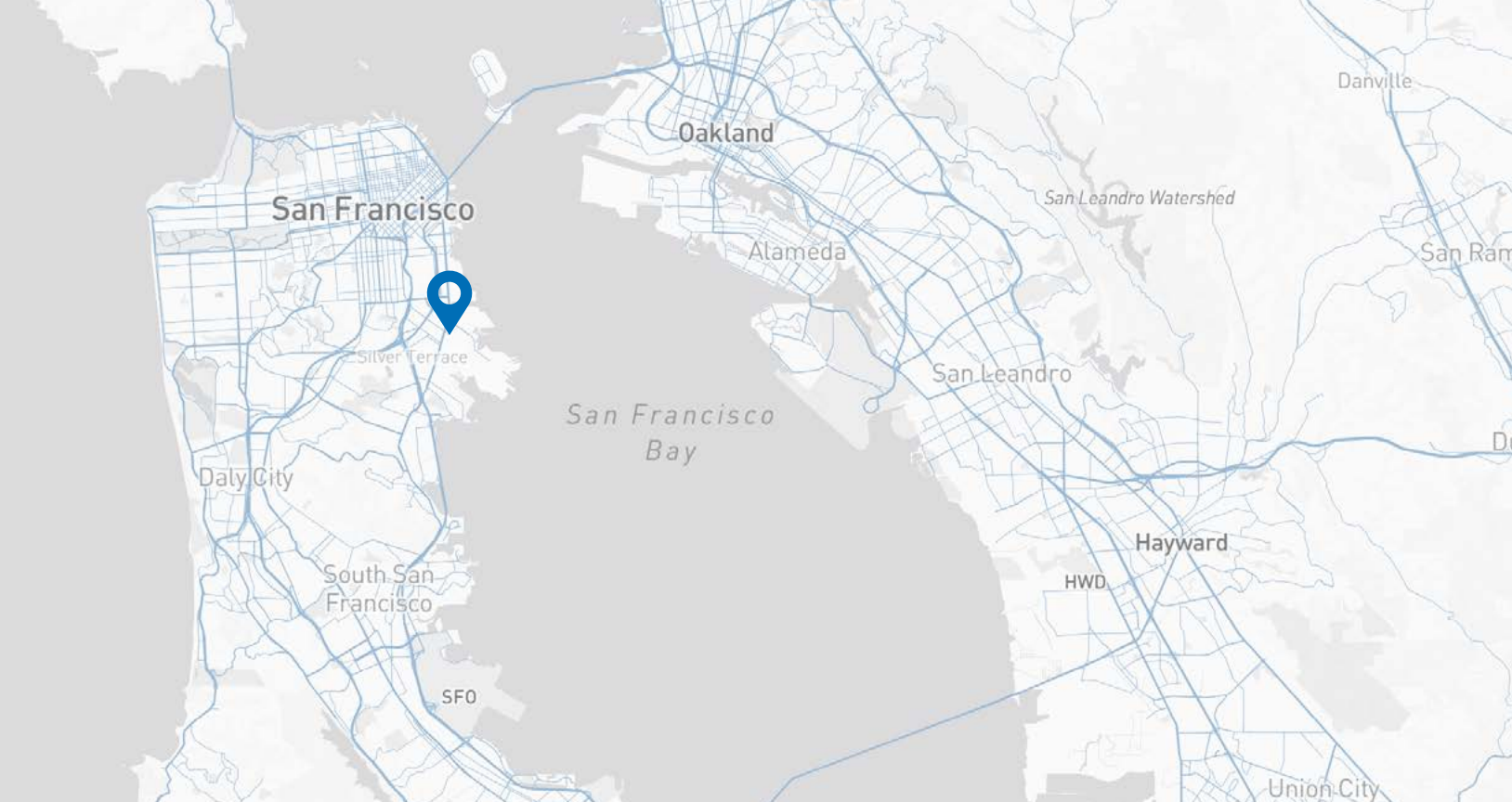


STATE-OF-THE-ART GMP & MANUFACTURING FACILITY

• FOR LEASE •

534-550 ECCLES AVE, SOUTH SAN FRANCISCO, CA 94080



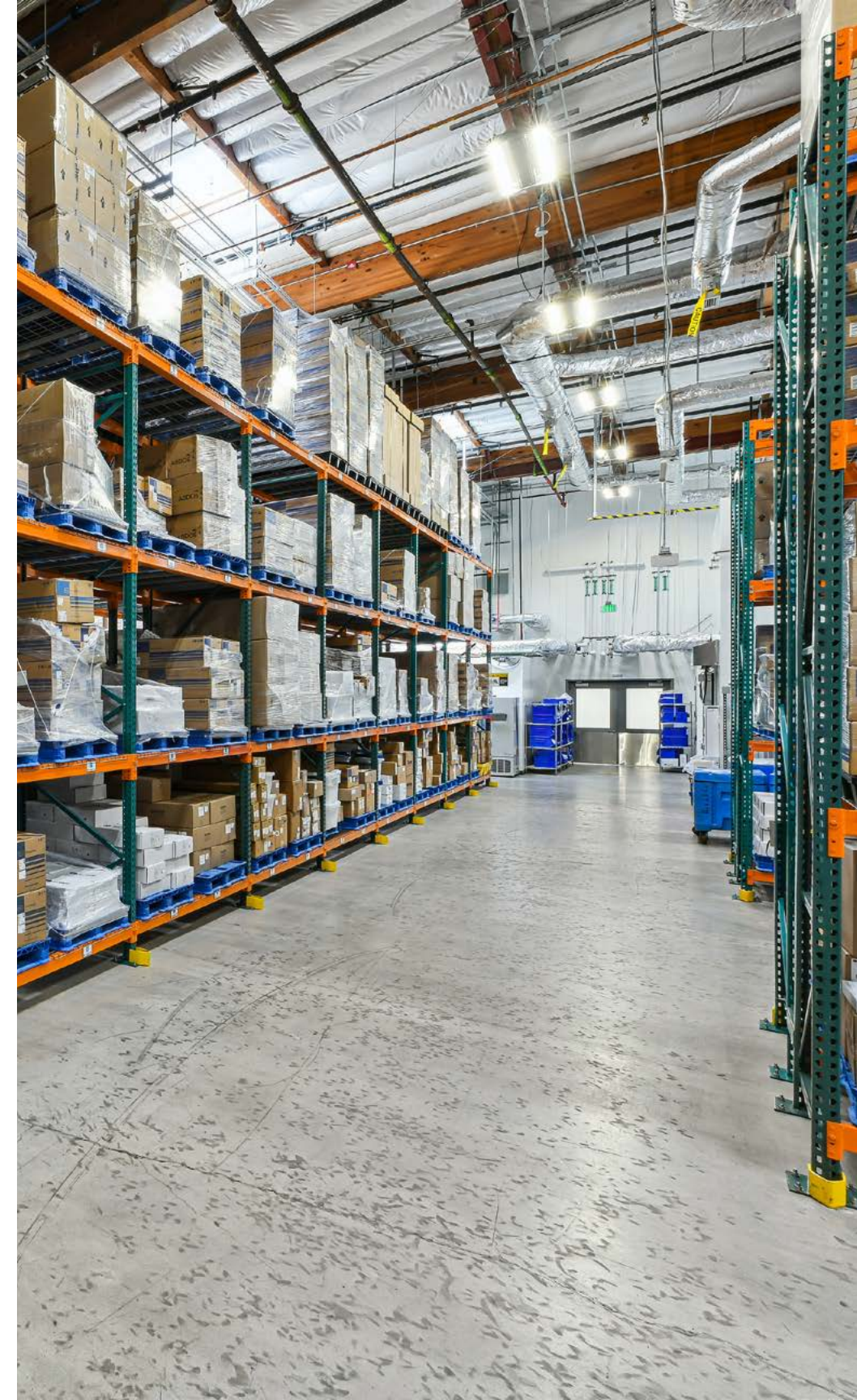
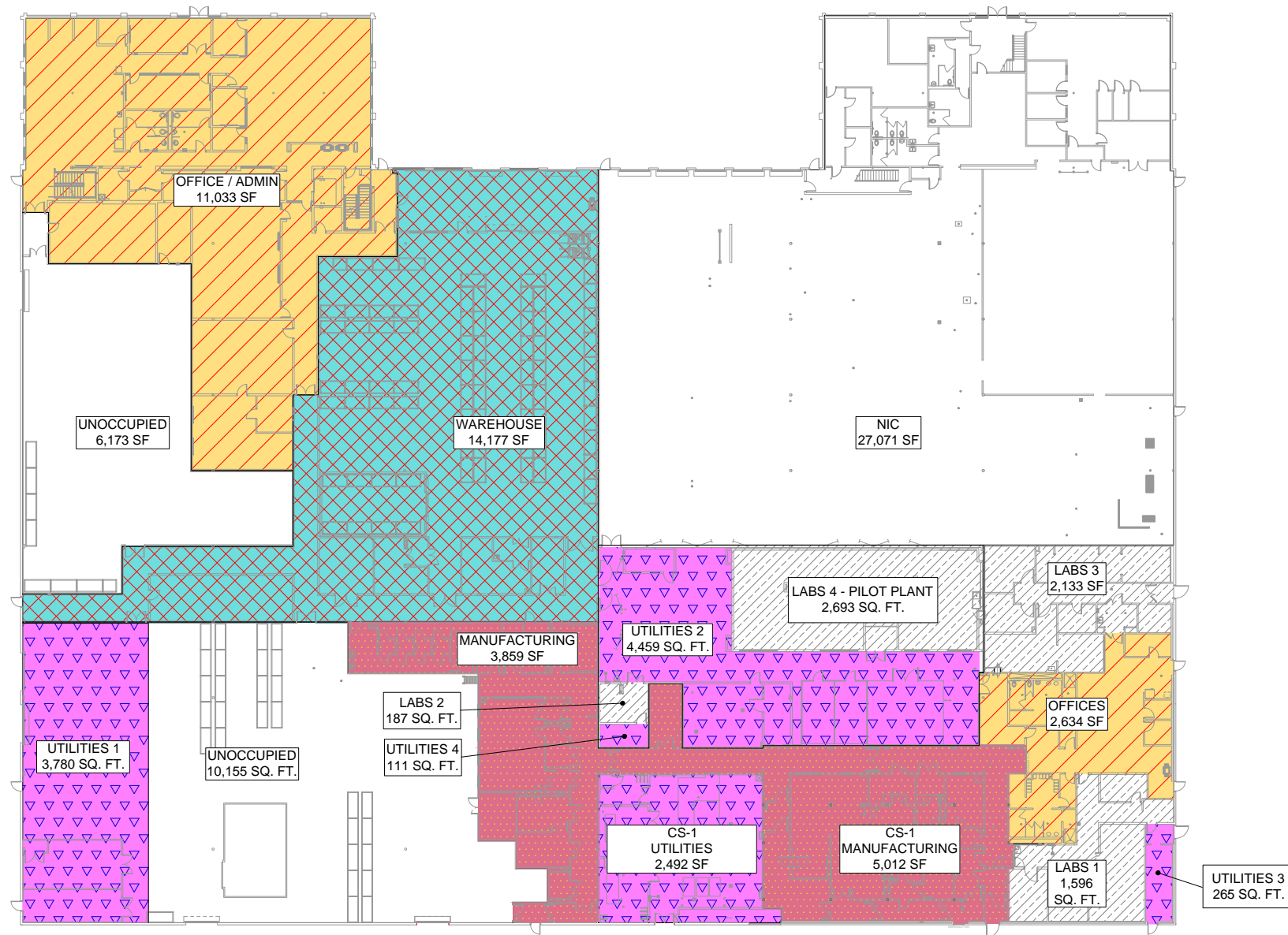


PROPERTY INFORMATION

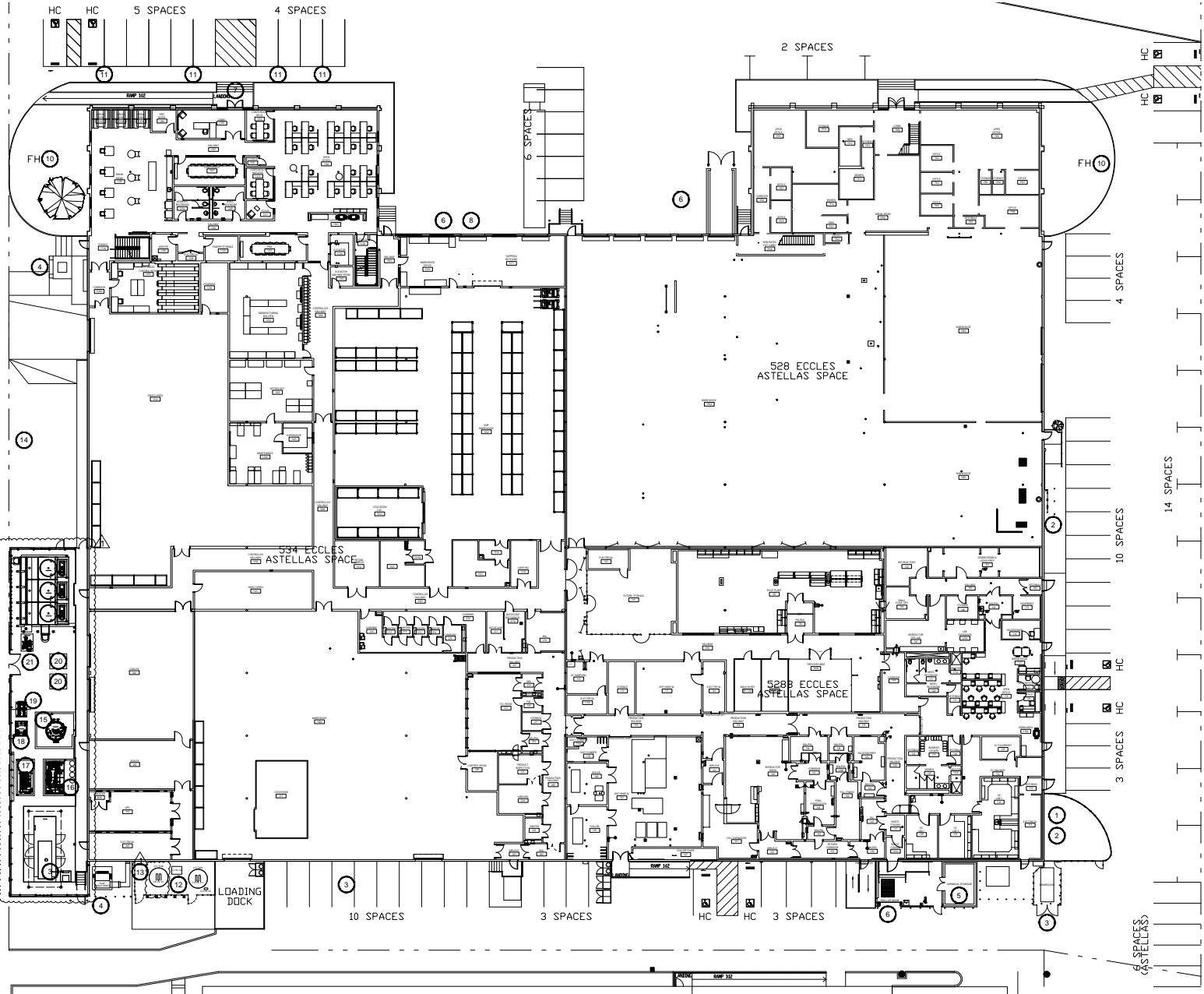
- Plug-and-play GMP biologics facility capable of utilizing state-of-the-industry disposable technologies
- 116,095 SF with new building systems including power, backup generator, HVAC and air handling, waste treatment, etc.
- Available 4/1/25 through 5/31/27 (on sublease)
- Direct deal / additional term available
- Drug Substance (DS) and Drug Project (DP) filling capability
- Facility produced clinical grade biologic products and includes Grade B, C and D controlled environments, temperature controlled
- Shipping/receiving, cascading air anti-rooms, BSL-2 R&D wet lab space
- Local user, ownership, and property management for maximized responsiveness and scientific continuity
- Building includes office space, QC labs, warehouse, document control area, pilot plant, and R&D labs



FLOOR PLANS

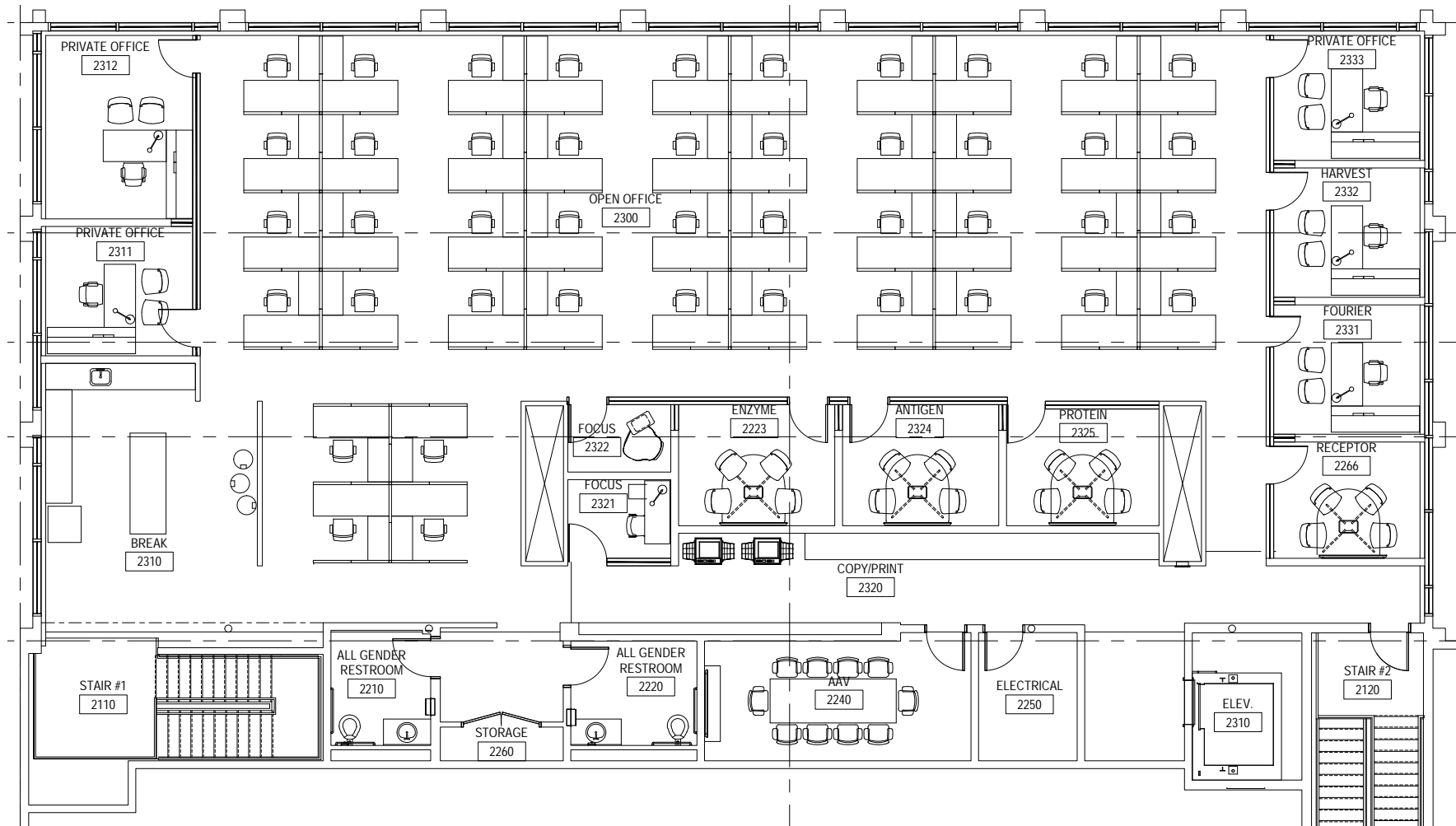


FLOOR PLANS



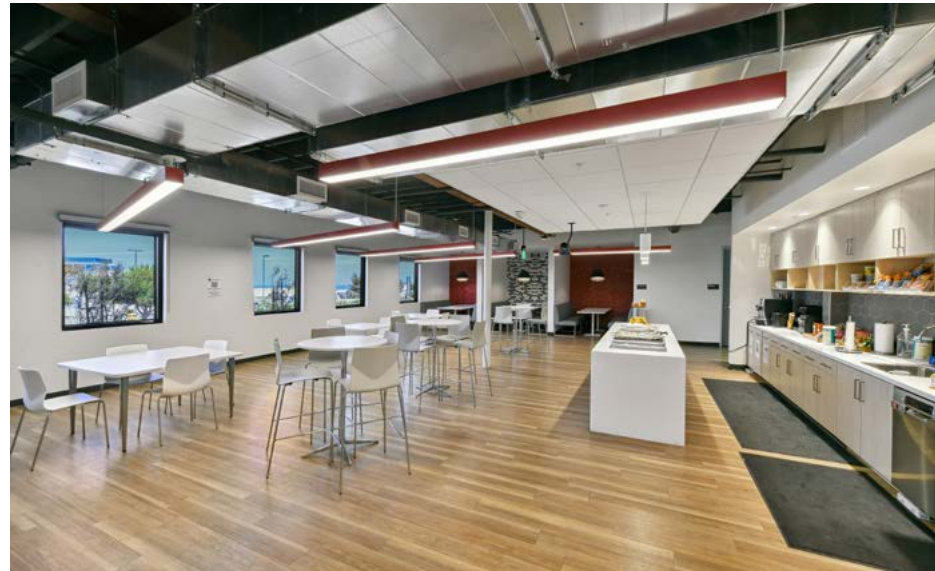
FLOOR PLANS

2ND FLOOR OFFICE / ADMIN SPACE











FOR INQUIRIES AND ADDITIONAL
QUESTIONS, PLEASE CONTACT:

PETER CONTE LIC #: 01840209
National Director | Laboratory & Life Sciences
peter.conte@transwestern.com | 415.489.1844

ANDREW DAVIDSON
Executive Managing Director
andrew.davidson@transwestern.com | 312.972.9082

KYLE ROBBINS
Executive Vice President
kyle.robbins@transwestern.com | 847.702.7803

DAVID BURKARDS
Executive Vice President
david.burkards@transwestern.com | 773.350.2210