

5106 North Armenia Avenue - Suite 2

TAMPA, FLORIDA



MEDICAL OFFICE CONDO - FOR SALE

Ideal for medical or professional use, this 2,040/SF office features plumbed exam rooms, a reception area, a kitchen, three bathrooms, and an open space for expansion. It is located across from St. Joseph's hospital and AdventHealth. Ideal for owner-occupier or investment at a 6.5 CAP rate.

- 8 Offices
- Plumbed Sinks
- Waiting/ Reception Area
- Signage on Armenia Ave.
- Ample Parking
- Courtyard

SIZE: 2,040/SF

**THE
OUTLIER
GROUP**

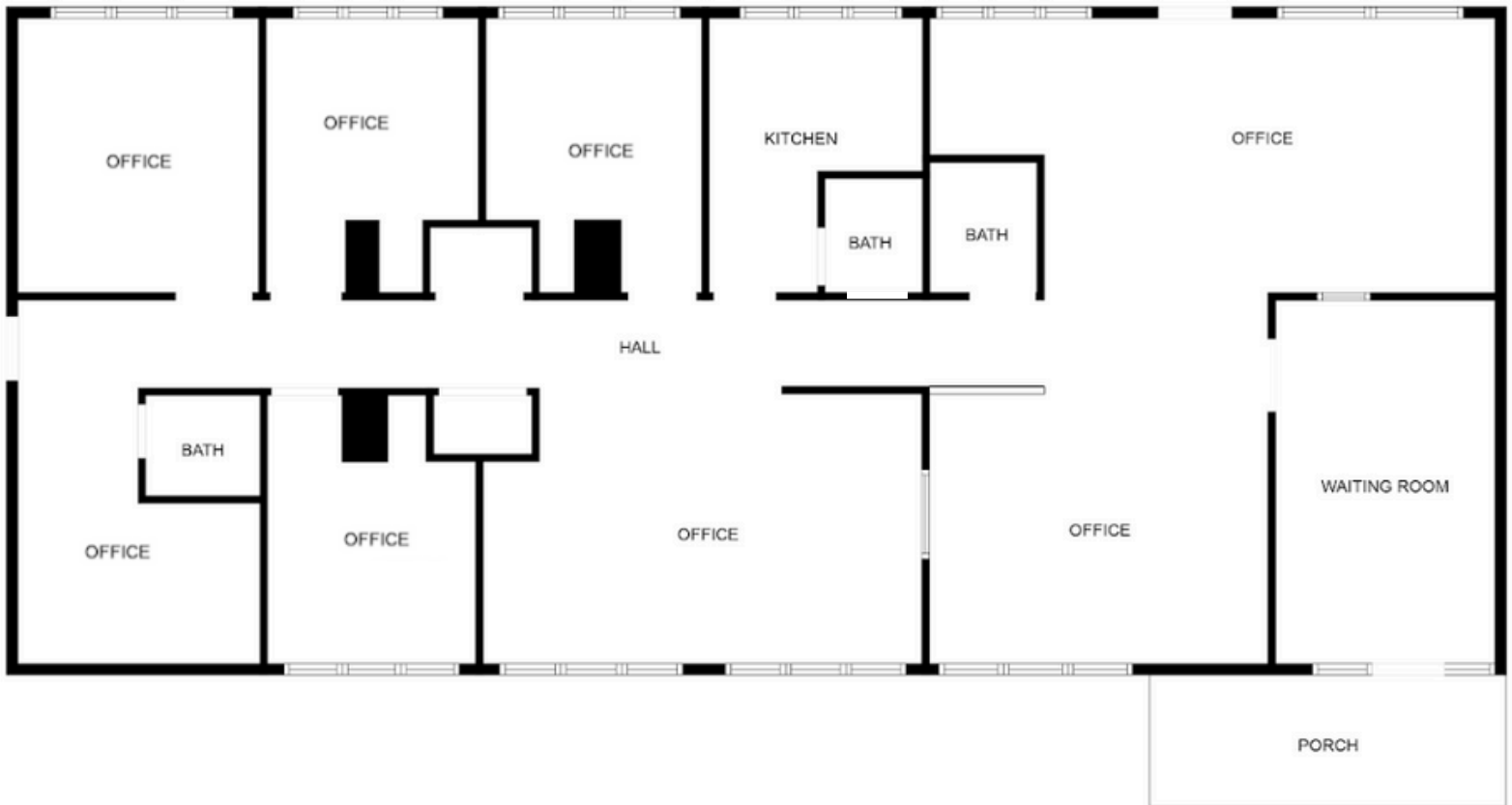
MAC AUTREY

(888) 966-4820

SOLUTIONS@OUTLIERGROUP.US

OUTLIERGROUP.US

FLOOR PLAN



Floorplan is approximate, accuracy not guaranteed.