

2125 E VICTORY DRIVE | SAVANNAH, GA 31404



THE PROPERTY

- Price: \$15 psf NNN
- Lot Size: 10,000 SF
- Tenants Include:
 - Chick-fil-A,
 - Vendors on Victory,
 - Sherwin-Williams,
 - Walgreens,
 - Papa Johns,
 - Small Smiles Pediatric Dentist
- Neighbors Include:
 - Home Depot,
 - Target,
 - Staples,
 - Starbucks,
 - Whole Foods
- Population in 5 mile radius: 130,094
- Only space available!

PLEASE INQUIRE

BETH VANTOSH



CELL: 912.663.3392



BVANTOSH@VANTOSHCO.COM

KEN RICHARDS



CELL: 912.429.6278



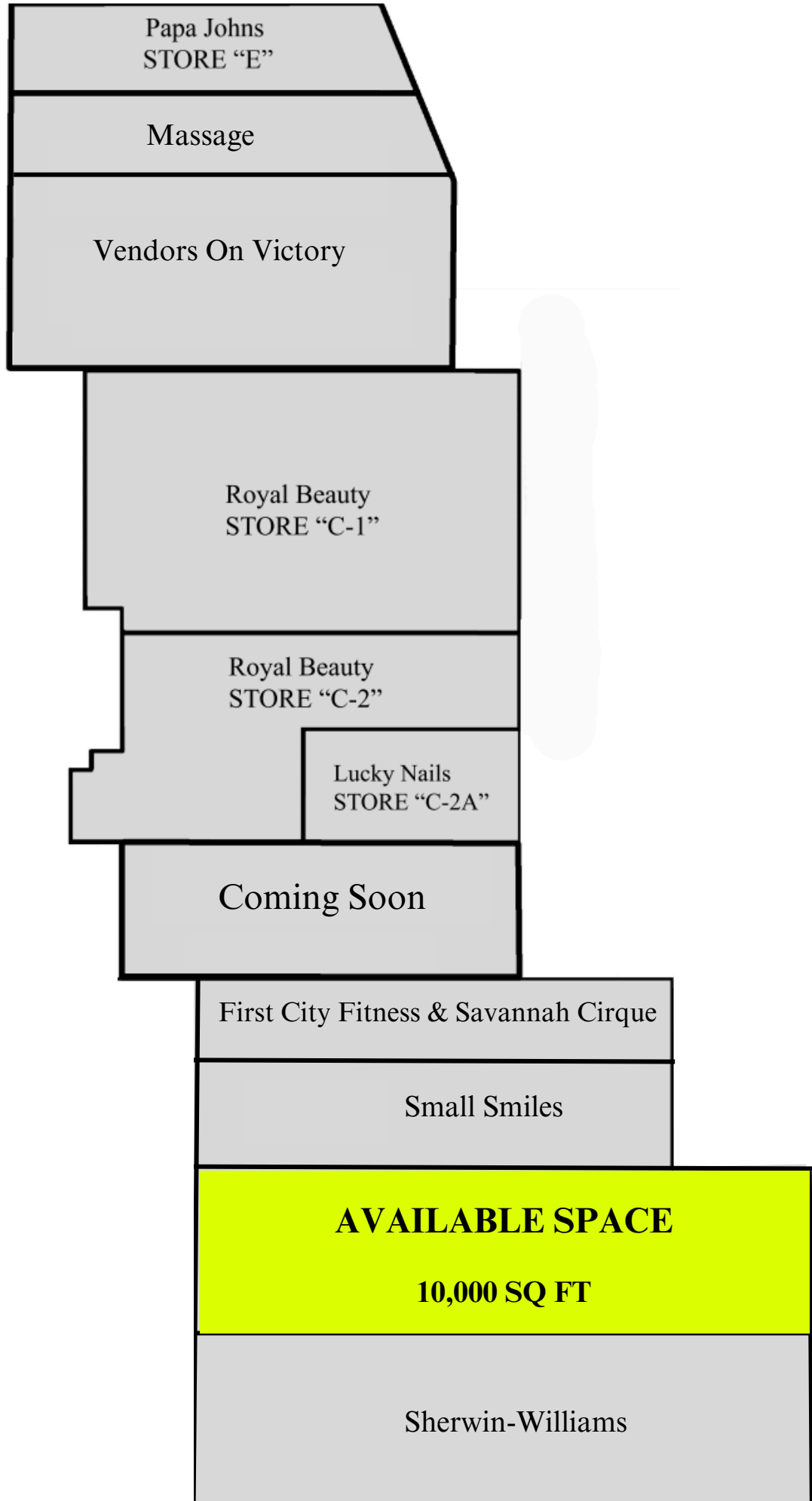
KRICHARDS@VANTOSHCO.COM



OFFICE: 912-233-6609



**24 E. OGLETHORPE AVENUE
SAVANNAH, GA 31401**



Papa Johns
STORE "E"

Massage

Vendors On Victory

Royal Beauty
STORE "C-1"

Royal Beauty
STORE "C-2"

Lucky Nails
STORE "C-2A"

Coming Soon

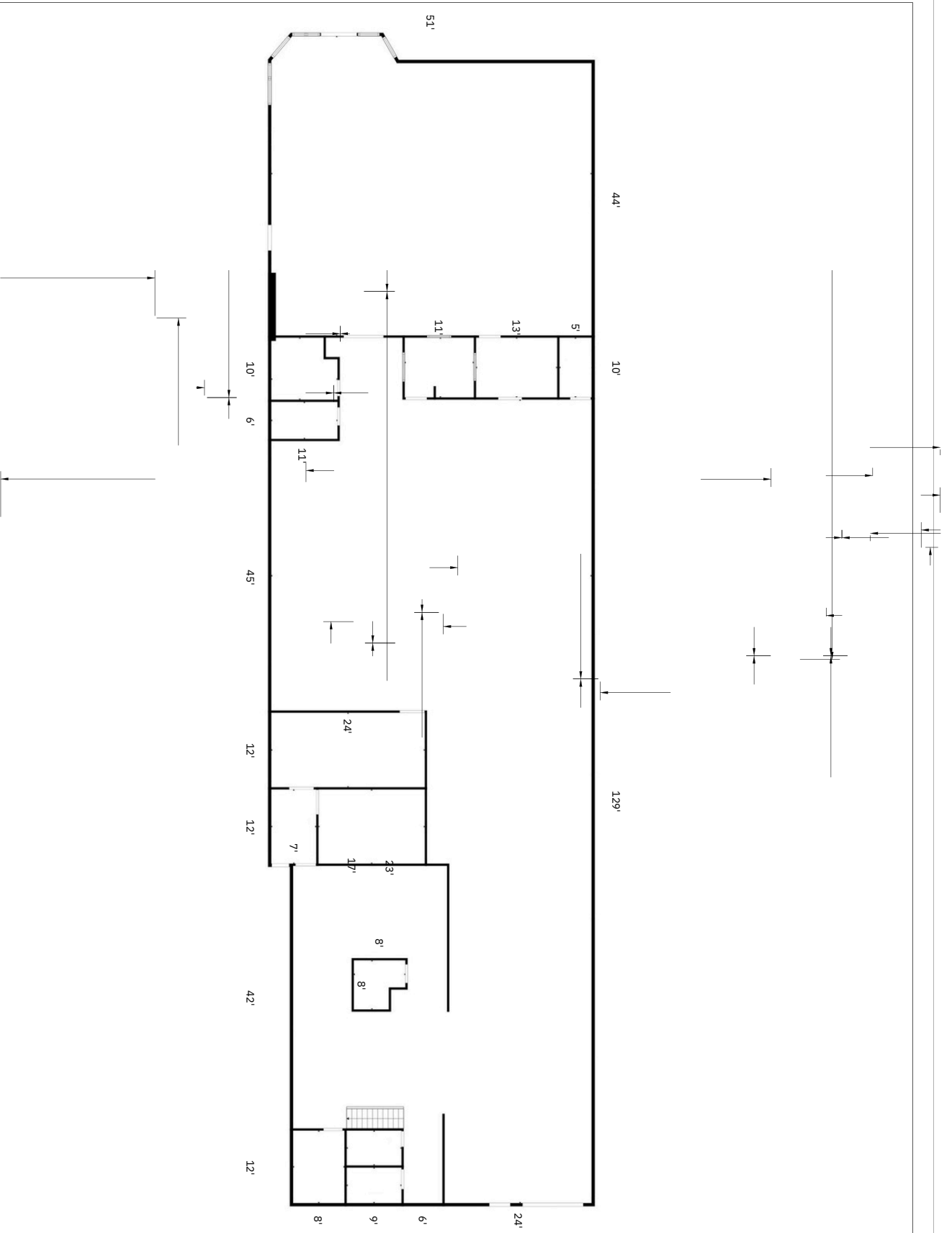
First City Fitness & Savannah Cirque

Small Smiles

AVAILABLE SPACE

10,000 SQ FT

Sherwin-Williams

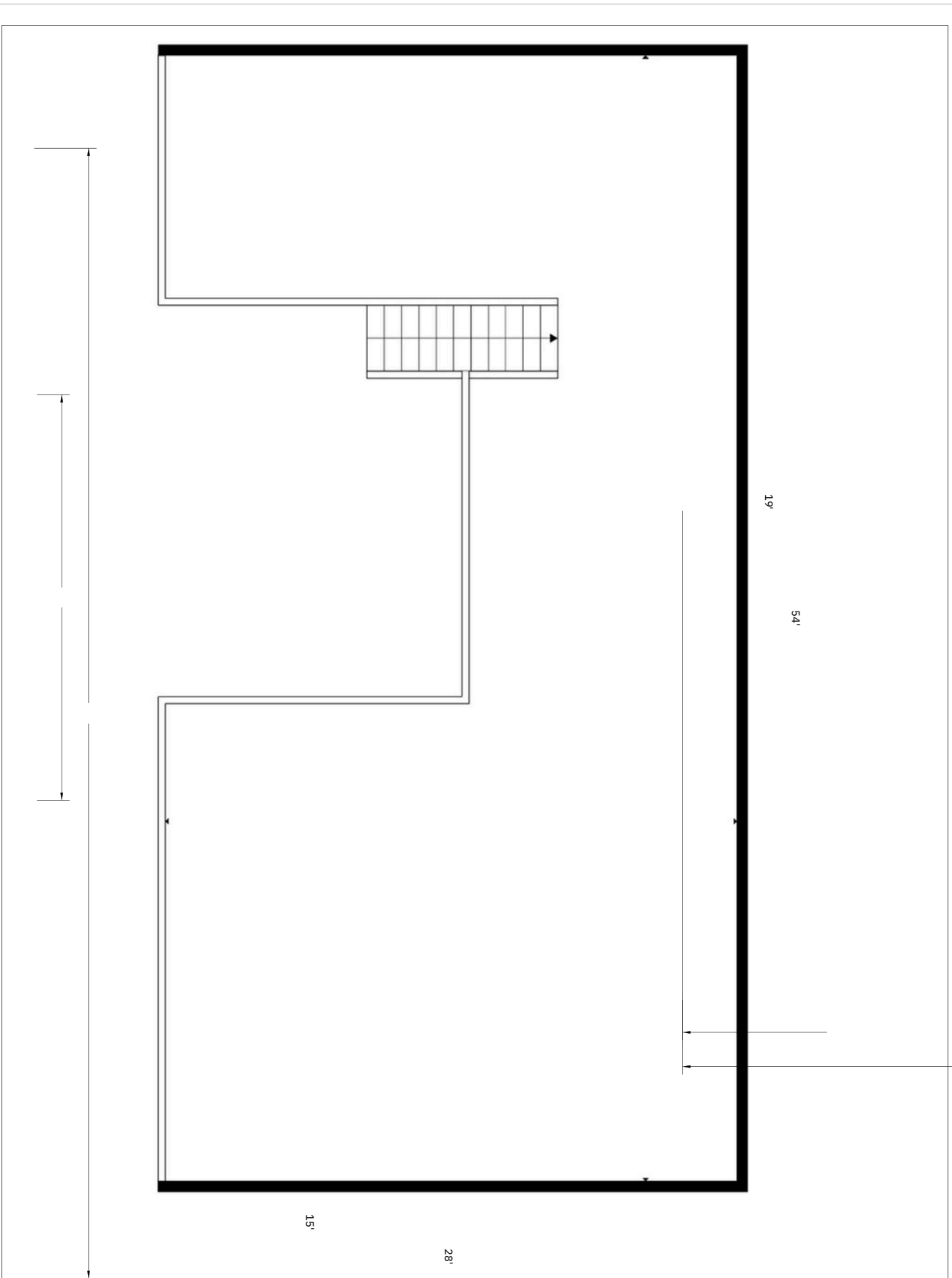


Graphic representation only.
SF: 10,000
GENERAL NOTES

BIANTOSH@ANTOSHCO.COM
BETH WATOSH
1105 3032
KRCHSR@ANTOSHCO.COM

2125 East VERA RICHARDS AVE CA 91404

10/28/2024
BRYAN PINEDA
01
MAIN LEVEL



Graphic representation only.
SF: 10,000
GENERAL NOTES

BIANTOSH@VANTOSHCO.COM
BETH VANTOSH
KRICHE@VANTOSHCO.COM

2125 East VENTURA RICHARDS
BRYAN PINEDA

10/28/2024
BRYAN PINEDA
UPSTAIRS
02