

COCHRAN

— commons —

Shop @ Cochran Commons

Conceptual Rendering Scheduled for 2026-2027



New Retail in the Heart of the South Hills
1910 COCHRAN ROAD, PITTSBURGH, PA 15220

Space Highlights:

- +/- 9,000 SF Available
- 90 Shared Parking Spaces
- End Cap with Patio Available
- High Visibility with New Pylon Signage along Cochran Road
- 26,000 +/- VPD along Cochran Road



NEWMARK

Licensed in Pennsylvania as Newmark Real Estate

The information contained herein has been obtained from sources deemed reliable but has not been verified and no guarantee warranty or representation either express or implied is made with respect to such information. Terms of sale or lease and availability are subject to change or withdrawal without notice.

For information, please contact:

Martin Perry, CCIM
Senior Managing Director
O 412-281-0100
M 412-310-2315
martin.perry@nmrk.com

COCHRAN

— commons —

1910 COCHRAN ROAD, PITTSBURGH, PA 15220

Shop @ Cochran Commons



5 Mile Radius Demographics:

275,492

Population

\$73,384

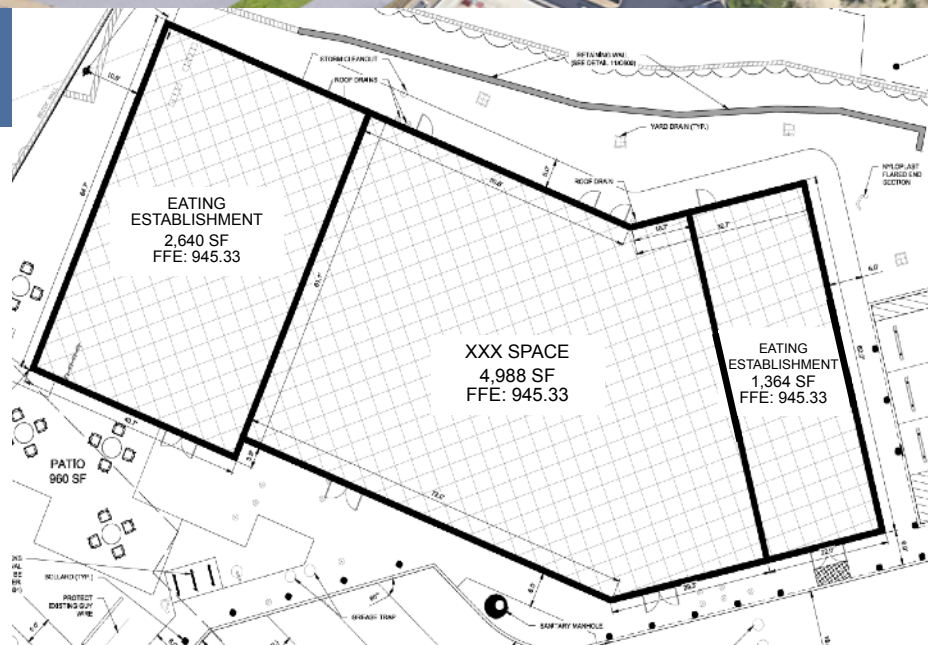
Median Household
Income



Average
Household Size



Median Age



For information, please contact:



Martin Perry, CCIM
Senior Managing Director
O 412-281-0100
M 412-310-2315
martin.perry@nmrk.com

NEWMARK

COCHRAN

— commons —

1910 COCHRAN ROAD, PITTSBURGH, PA 15220

Shop @ Cochran Commons



For information, please contact:



Martin Perry, CCIM
Senior Managing Director
O 412-281-0100
M 412-310-2315
martin.perry@nmrk.com

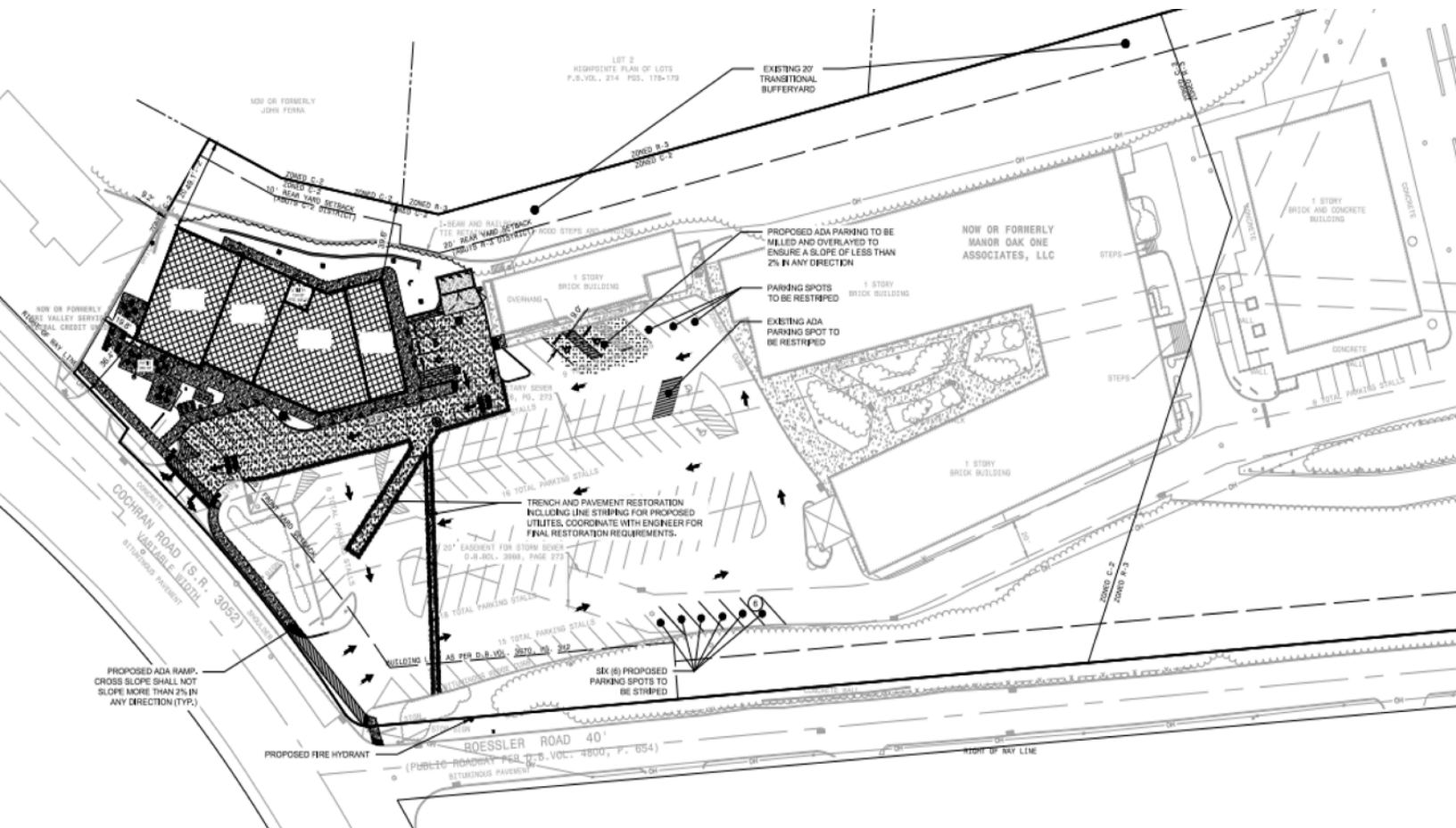
NEWMARK

COCHRAN

— commons —

1910 COCHRAN ROAD, PITTSBURGH, PA 15220

Shop @ Cochran Commons



For information, please contact:



Martin Perry, CCIM
Senior Managing Director
O 412-281-0100
M 412-310-2315
martin.perry@nmrk.com

NEWMARK