



SHOCKOE CENTER
 1900 EAST FRANKLIN STREET
 RICHMOND, VA 23223

NOW LEASING!



CREATIVE AND MODERN OFFICE SPACE IN RENOVATED HISTORIC WAREHOUSE

PROPERTY FEATURES

- ▶ Booming development area of Shockoe Bottom
- ▶ Fusion of rustic charm and modern finishes, with exposed brick and beams
- ▶ Excellent access to major interstates I-95, I-64 and Downtown Expressway I-195
- ▶ Parking garage access within one block
- ▶ Professionally-managed by local property management firm with on-site management office
- ▶ Open floor plan with built-in kitchenette
- ▶ Access to building amenities, including roof top deck with panoramic views of city skyline, 24-hour fitness center and large courtyard area
- ▶ Within walking distance of VCU/MCV, Shockoe Slip, Church Hill, many restaurants and close to Central Business District

PROPERTY SUMMARY

Space Available	Office 1900-A	4,047 SF
	Office/Retail 1900-B	1,021 SF
	Combinable	Total 5,068 SF



PROPERTY CONTACT

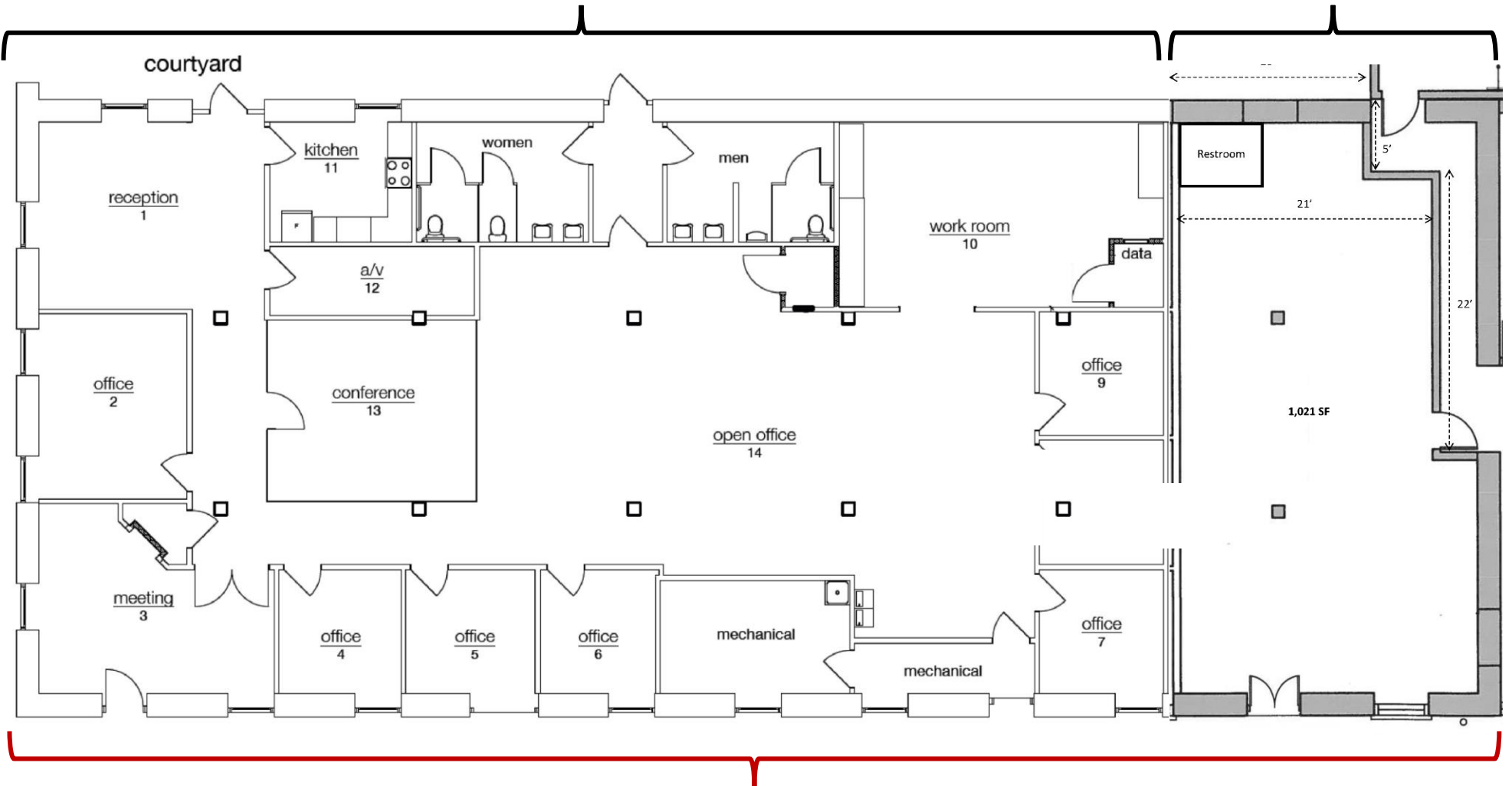
Sean Eichert, (804) 419-2295
 seichert@plasmgt.com, www.plasmgt.com

Plus Management, LLC
 13281 River's Bend Blvd, Suite 201, Chester, VA 23836

FLOOR PLANS

Suite 1900-A
4,047 SF

Suite 1900-B
1,021 SF



Combinable
Total 5,068 SF

AERIAL

