



Colliers



COLDWELL BANKER  
COMMERCIAL  
BROKERS  
OF THE VALLEY



Available For Lease

# Rare Small Warehouse

902 Enterprise Way, Suite L | Napa, CA

## Highlights

- ±3,732 SF within a ±40,380 SF Multi-Tenant Building
- \$1.50/SF/Mo. NNN (Est. @ \$0.47/Mo.)
- Zoned: Industrial Light (IL)

## Warehouse Area Features

- Floor Drains (Subject to NSD Rules/Regs)
- One (1) Roll-Up (10'x12')
- ±15' Clear Height
- Refrigerated (Three Air Handlers)

## Contact Brokers

### Bret DeMartini

Executive Vice President  
CA License No. 00853110  
bret.demartini@colliers.com  
+1 707 863 8397

### Michael Moffett

Coldwell Banker Commercial  
Brokers of the Valley  
CA License No. 00946472  
mmoffett@cnapavalley.com  
+1 707 479 1976

### Cathy D'Angelo Holmes

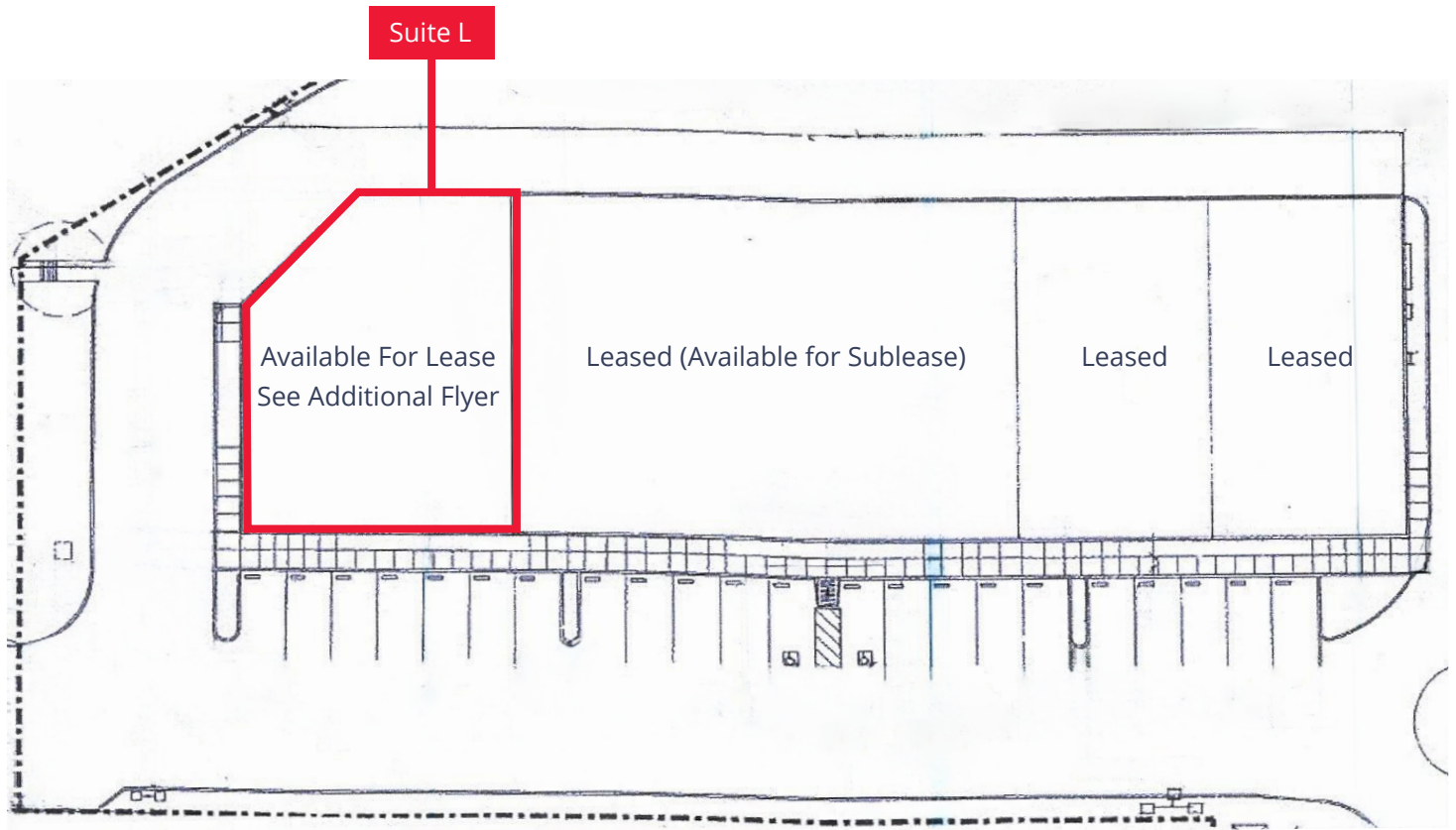
Coldwell Banker Commercial  
Brokers of the Valley  
CA License No. 01355085  
cholmes@cnapavalley.com  
+1 707 304 3338

### Colliers

1850 Mt Diablo Blvd, Suite 200  
Walnut Creek, CA 94596  
colliers.com

902 Enterprise Way, Suite L | Napa, CA

# Site Plan



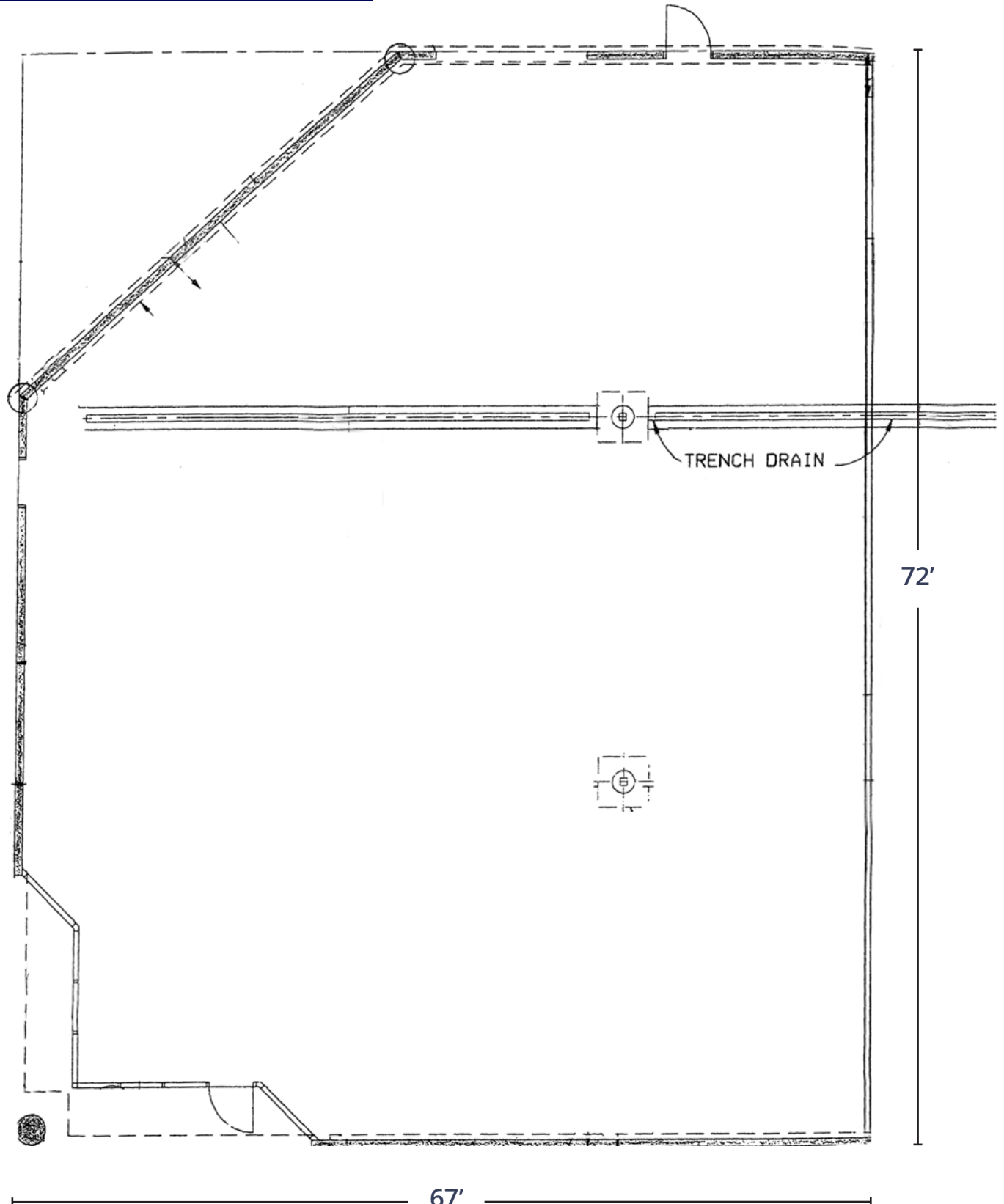
\* Plan not to scale



This document has been prepared by Colliers for advertising and general information only. Colliers makes no guarantees, representations or warranties of any kind, expressed or implied, regarding the information including, but not limited to, warranties of content, accuracy and reliability. Any interested party should undertake their own inquiries as to the accuracy of the information. Colliers excludes unequivocally all inferred or implied terms, conditions and warranties arising out of this document and excludes all liability for loss and damages arising there from. This publication is the copyrighted property of Colliers and /or its licensor(s). © 2025. All rights reserved. This communication is not intended to cause or induce breach of an existing listing agreement.

902 Enterprise Way, Suite L | Napa, CA

# Floor Plan



\* Plan not to scale



902 Enterprise Way, Suite L | Napa, CA

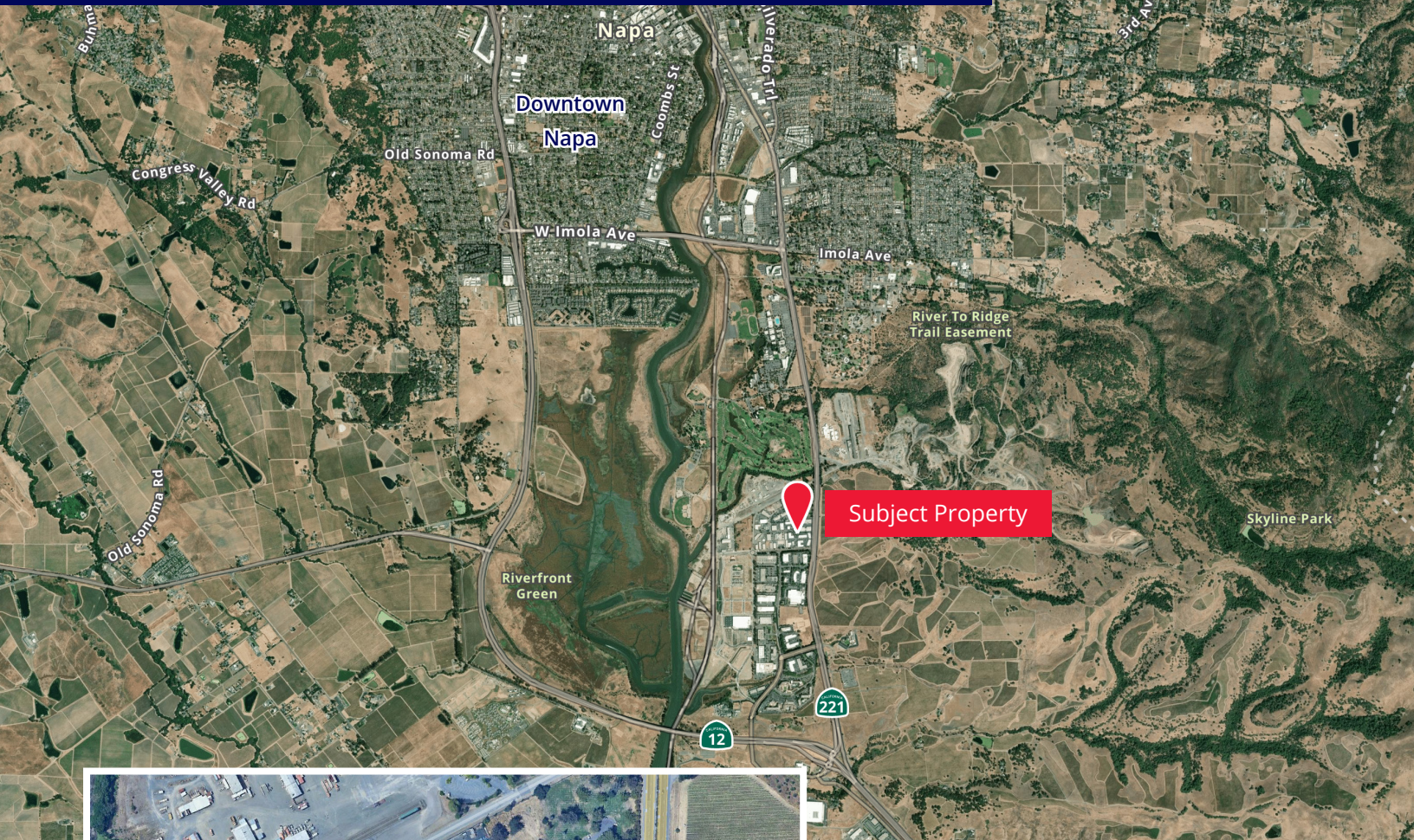
# Photo Gallery





902 Enterprise Way, Suite L | Napa, CA

# Location Overview



Subject Property



Subject Property

## Contact Brokers

### Bret DeMartini

Executive Vice President  
CA License No. 00853110  
[bret.demartini@colliers.com](mailto:bret.demartini@colliers.com)  
+1 707 863 8397

### Michael Moffett

Coldwell Banker Commercial Brokers of the Valley  
CA License No. 00946472  
[mmoffett@cbnapavalley.com](mailto:mmoffett@cbnapavalley.com)  
+1 707 479 1976

### Cathy D'Angelo Holmes

Coldwell Banker Commercial Brokers of the Valley  
CA License No. 01355085  
[cholmes@cbnapavalley.com](mailto:cholmes@cbnapavalley.com)  
+1 707 304 3338