

FOR LEASE OFFICE BUILDING



1601 LANCASTER DR, GRAPEVINE, TX 76051



PROPERTY HIGHLIGHTS

- ± 2,163 - 8,000
- Medical Office Space
- 2nd Generation Space
- Move-In Ready Suite
- Building/Monument Signage
- Generous Parking
- Across from Baylor Scott & White Grapevine
- Located at Colleyville Blvd & Lancaster Drive

LEASE RATE \$20.00 - 22.00 SF/YR | NNN



CONTACT INFORMATION

ERIC GOODWIN

Office: 817.488.4333
Cell: 214.642.8928
eric@championsdfw.com

GRANT GOODWIN

Office: 817.488.4333
Cell: 972.632.9608
grant@championsdfw.com

JIM KELLEY

Office: 817.488.4333
Cell: 817.909.7875
jim@championsdfw.com

Champions DFW Commercial Realty

1725 E Southlake Blvd, Suite 100, Southlake, TX 76092

©2023 Champions DFW Commercial Realty LLC.

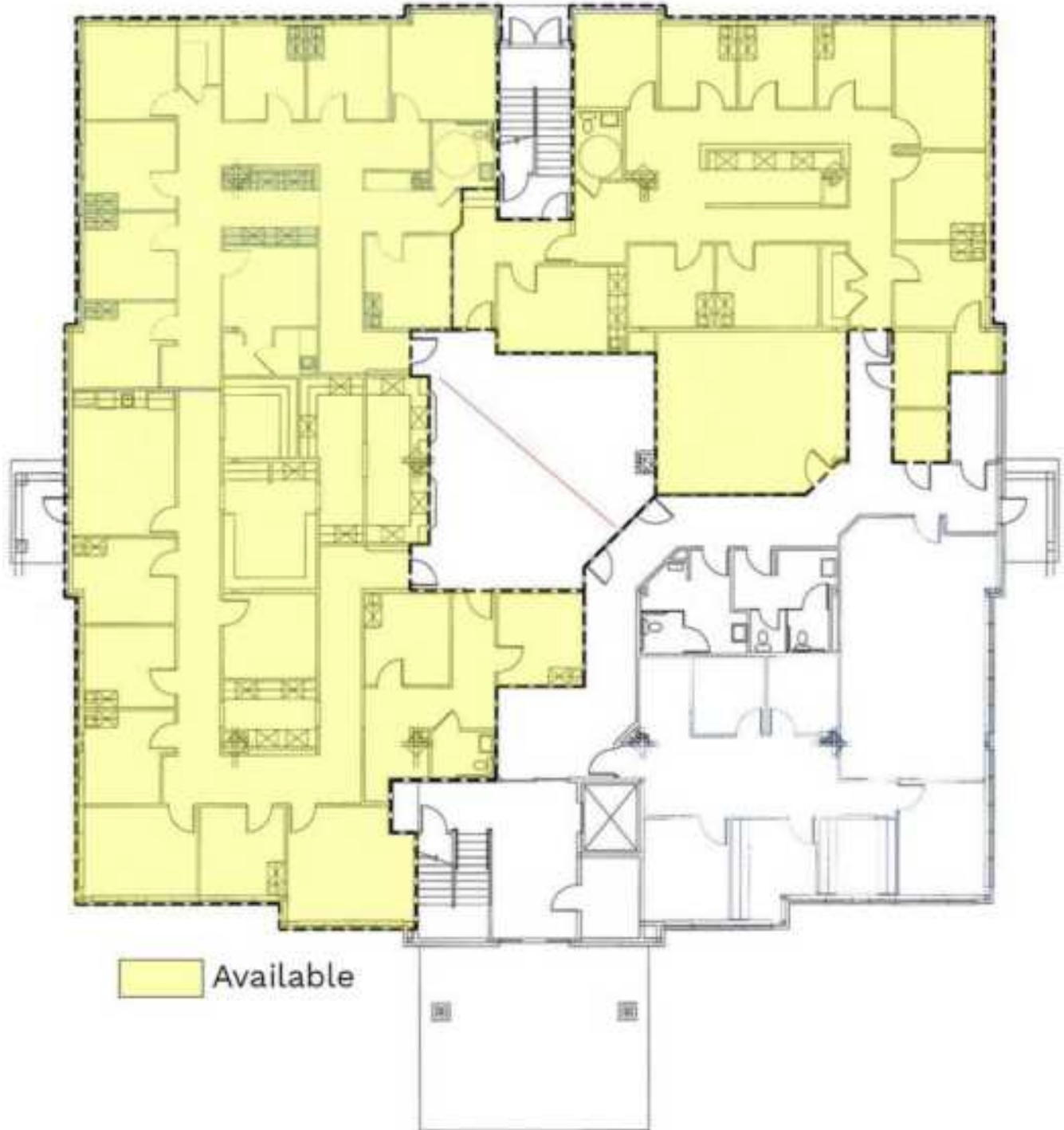
All rights reserved. The information contained herein was obtained from sources believed to be reliable. It is subject to verification. The presentation of this property is submitted subject to errors, omissions, change of price or conditions, prior to sale or lease, or withdrawal without notice

FOR LEASE
OFFICE BUILDING



1601 LANCASTER DR, GRAPEVINE, TX 76051

FLOOR PLAN - 1ST FLOOR



Champions DFW Commercial Realty

1725 E Southlake Blvd, Suite 100, Southlake, TX 76092

©2023 Champions DFW Commercial Realty LLC.

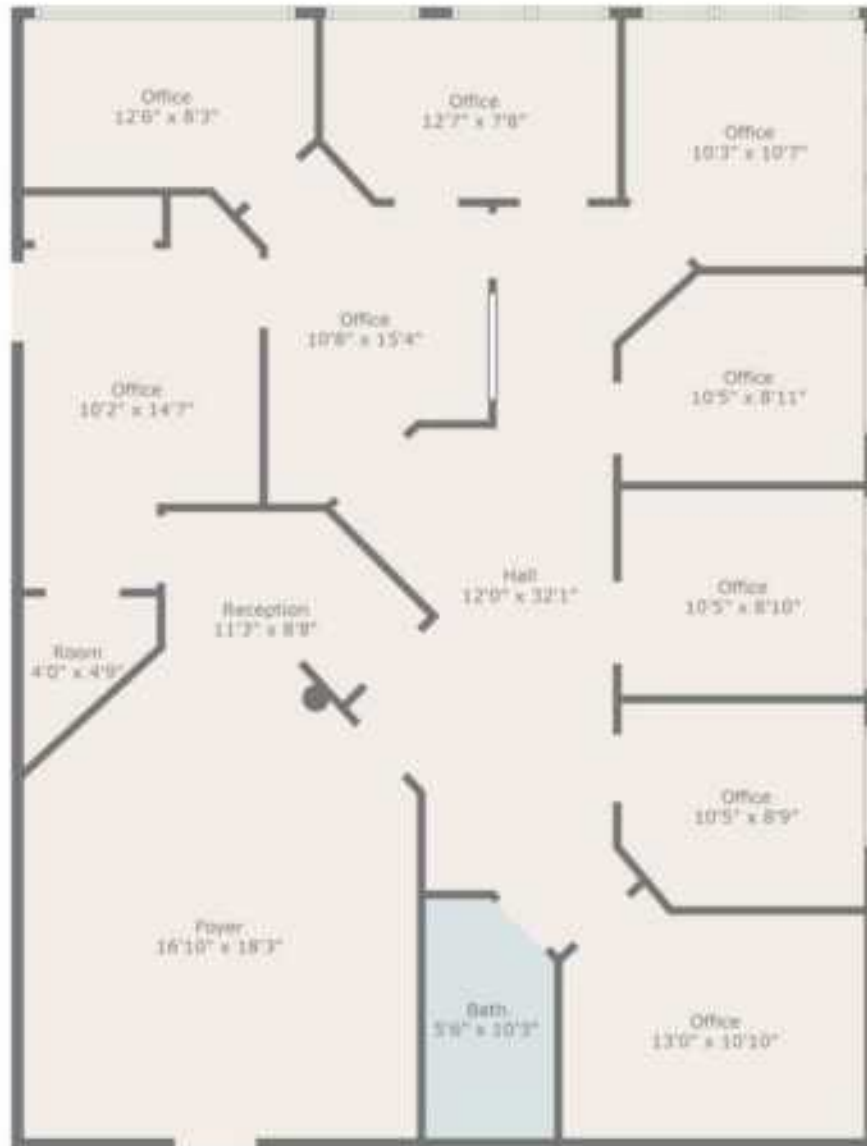
All rights reserved. The information contained herein was obtained from sources believed to be reliable. It is subject to verification. The presentation of this property is submitted subject to errors, omissions, change of price or conditions, prior to sale or lease, or withdrawal without notice

FOR LEASE OFFICE BUILDING



1601 LANCASTER DR, GRAPEVINE, TX 76051

FLOOR PLAN - SUITE 160



Champions DFW Commercial Realty

1725 E Southlake Blvd, Suite 100, Southlake, TX 76092

©2023 Champions DFW Commercial Realty LLC.

All rights reserved. The information contained herein was obtained from sources believed to be reliable. It is subject to verification. The presentation of this property is submitted subject to errors, omissions, change of price or conditions, prior to sale or lease, or withdrawal without notice.

FOR LEASE
OFFICE BUILDING

1601 LANCASTER DR, GRAPEVINE, TX 76051

FLOOR PLAN - 2ND FLOOR



Champions DFW Commercial Realty

1725 E Southlake Blvd, Suite 100, Southlake, TX 76092

©2023 Champions DFW Commercial Realty LLC.

All rights reserved. The information contained herein was obtained from sources believed to be reliable. It is subject to verification. The presentation of this property is submitted subject to errors, omissions, change of price or conditions, prior to sale or lease, or withdrawal without notice

FOR LEASE OFFICE BUILDING



1601 LANCASTER DR, GRAPEVINE, TX 76051

LEASE SPACES



LEASE INFORMATION

| | | | |
|--------------|------------------|-------------|------------------|
| Lease Type: | NNN | Lease Term: | 36-60 Months |
| Total Space: | 1,807 - 8,000 SF | Lease Rate: | Call for Pricing |

AVAILABLE SPACES

| SUITE | TENANT | SIZE (SF) | LEASE TYPE | LEASE RATE | |
|------------------|-----------|-----------|------------|------------------|---|
| Suite 100 | Available | 2,163 SF | NNN | Call for Pricing | - |
| Suite 160 | Available | 1,807 SF | NNN | Call for Pricing | - |
| Full First Floor | Available | 8,000 SF | NNN | Call for Pricing | - |

Champions DFW Commercial Realty

1725 E Southlake Blvd, Suite 100, Southlake, TX 76092

©2023 Champions DFW Commercial Realty LLC.

All rights reserved. The information contained herein was obtained from sources believed to be reliable. It is subject to verification. The presentation of this property is submitted subject to errors, omissions, change of price or conditions, prior to sale or lease, or withdrawal without notice

FOR LEASE
OFFICE BUILDING



1601 LANCASTER DR, GRAPEVINE, TX 76051

EXTERIOR PHOTOS



Champions DFW Commercial Realty

1725 E Southlake Blvd, Suite 100, Southlake, TX 76092

©2023 Champions DFW Commercial Realty LLC.

All rights reserved. The information contained herein was obtained from sources believed to be reliable. It is subject to verification. The presentation of this property is submitted subject to errors, omissions, change of price or conditions, prior to sale or lease, or withdrawal without notice

FOR LEASE OFFICE BUILDING



1601 LANCASTER DR, GRAPEVINE, TX 76051

INTERIOR PHOTOS - SUITE 160



Champions DFW Commercial Realty

1725 E Southlake Blvd, Suite 100, Southlake, TX 76092

©2023 Champions DFW Commercial Realty LLC.

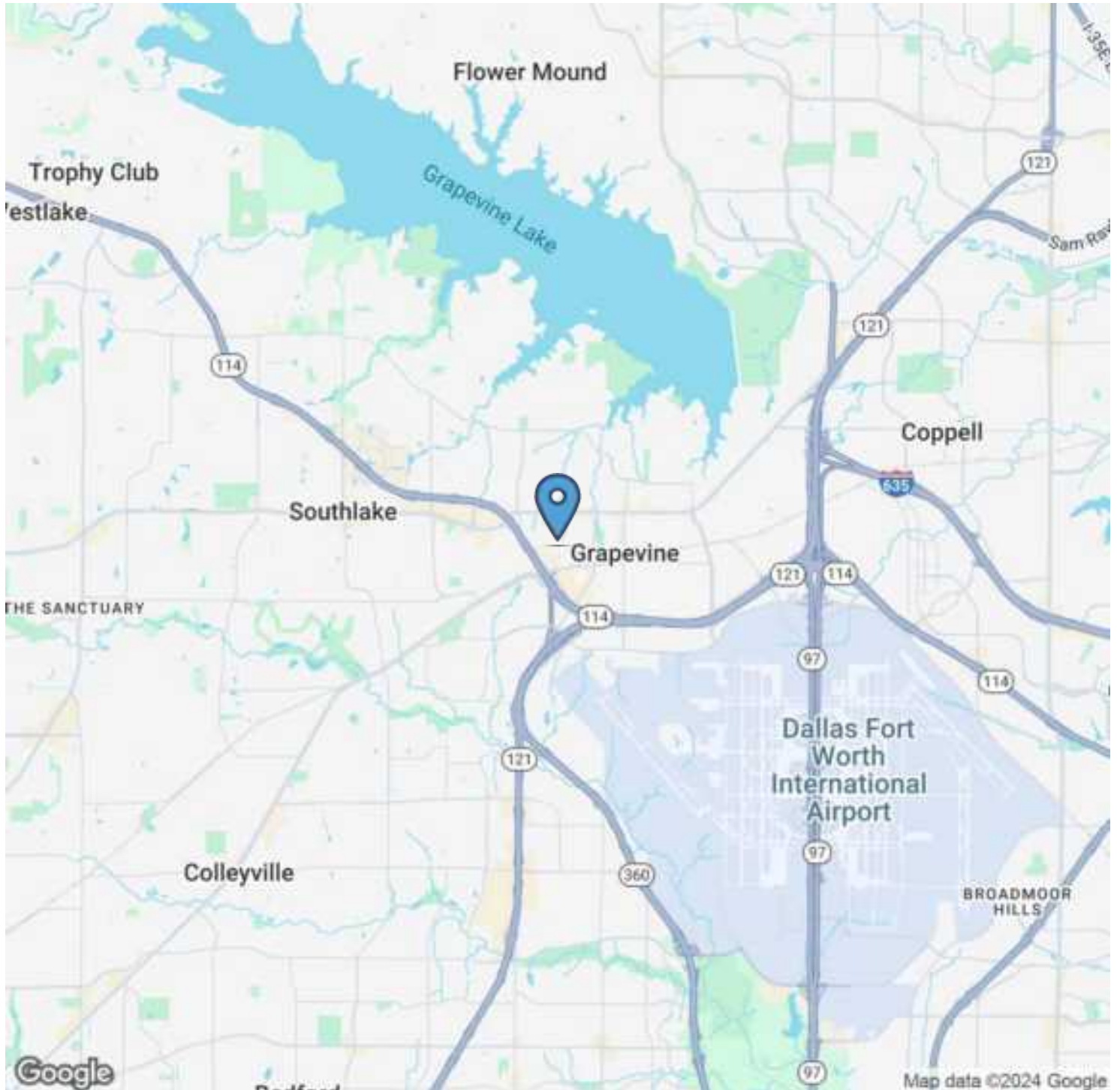
All rights reserved. The information contained herein was obtained from sources believed to be reliable. It is subject to verification. The presentation of this property is submitted subject to errors, omissions, change of price or conditions, prior to sale or lease, or withdrawal without notice.

FOR LEASE OFFICE BUILDING



1601 LANCASTER DR, GRAPEVINE, TX 76051

LOCATION MAP



Champions DFW Commercial Realty

1725 E Southlake Blvd, Suite 100, Southlake, TX 76092

©2023 Champions DFW Commercial Realty LLC.

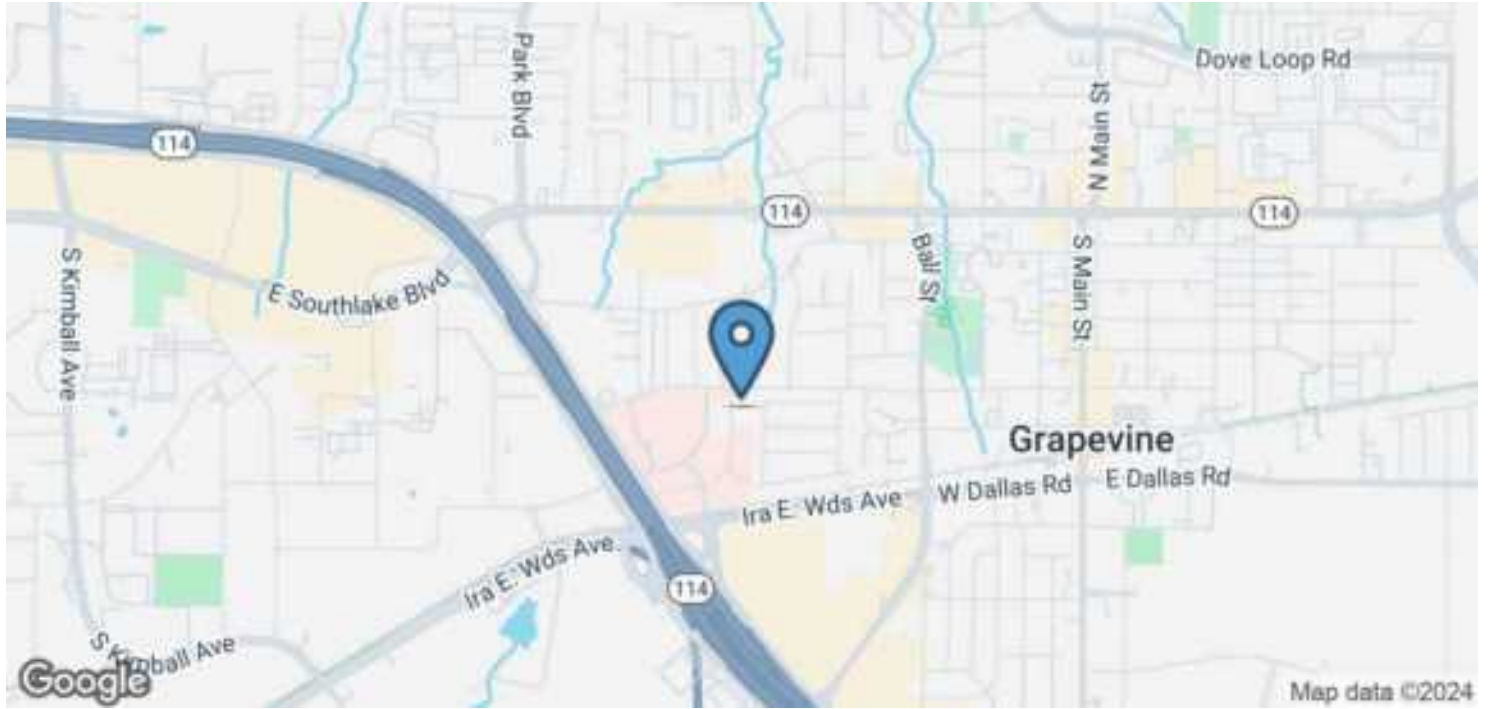
All rights reserved. The information contained herein was obtained from sources believed to be reliable. It is subject to verification. The presentation of this property is submitted subject to errors, omissions, change of price or conditions, prior to sale or lease, or withdrawal without notice.

FOR LEASE OFFICE BUILDING



1601 LANCASTER DR, GRAPEVINE, TX 76051

DEMOGRAPHICS MAP & REPORT



| POPULATION | 1 MILE | 3 MILES | 5 MILES |
|----------------------|-----------|-----------|-----------|
| Total Population | 4,701 | 43,471 | 105,723 |
| Average age | 39.0 | 36.8 | 38.2 |
| Average age (Male) | 36.9 | 36.5 | 38.4 |
| Average age (Female) | 39.9 | 36.9 | 37.7 |
| HOUSEHOLDS & INCOME | 1 MILE | 3 MILES | 5 MILES |
| Total households | 1,851 | 16,463 | 39,181 |
| # of persons per HH | 2.5 | 2.6 | 2.7 |
| Average HH income | \$77,371 | \$102,169 | \$124,022 |
| Average house value | \$203,064 | \$242,113 | \$293,057 |

*Demographic data derived from 2020 ACS - US Census

Champions DFW Commercial Realty

1725 E Southlake Blvd, Suite 100, Southlake, TX 76092

©2023 Champions DFW Commercial Realty LLC.

All rights reserved. The information contained herein was obtained from sources believed to be reliable. It is subject to verification. The presentation of this property is submitted subject to errors, omissions, change of price or conditions, prior to sale or lease, or withdrawal without notice

1601 LANCASTER DR, GRAPEVINE, TX 76051



Information About Brokerage Services

Texas law requires all real estate license holders to give the following information about brokerage services to prospective buyers, tenants, sellers and landlords.

TYPES OF REAL ESTATE LICENSE HOLDERS:

- A **BROKER** is responsible for all brokerage activities, including acts performed by sales agents sponsored by the broker.
- A **SALES AGENT** must be sponsored by a broker and works with clients on behalf of the broker.

A BROKER'S MINIMUM DUTIES REQUIRED BY LAW (A client is the person or party that the broker represents):

- Put the interests of the client above all others, including the broker's own interests;
- Inform the client of any material information about the property or transaction received by the broker;
- Answer the client's questions and present any offer to or counter-offer from the client; and
- Treat all parties to a real estate transaction honestly and fairly.

A LICENSE HOLDER CAN REPRESENT A PARTY IN A REAL ESTATE TRANSACTION:

AS AGENT FOR OWNER (SELLER/LANDLORD): The broker becomes the property owner's agent through an agreement with the owner, usually in a written listing to sell or property management agreement. An owner's agent must perform the broker's minimum duties above and must inform the owner of any material information about the property or transaction known by the agent, including information disclosed to the agent or subagent by the buyer or buyer's agent.

AS AGENT FOR BUYER/TENANT: The broker becomes the buyer/tenant's agent by agreeing to represent the buyer, usually through a written representation agreement. A buyer's agent must perform the broker's minimum duties above and must inform the buyer of any material information about the property or transaction known by the agent, including information disclosed to the agent by the seller or seller's agent.

AS AGENT FOR BOTH - INTERMEDIARY: To act as an intermediary between the parties the broker must first obtain the written agreement of each party to the transaction. The written agreement must state who will pay the broker and, in conspicuous bold or underlined print, set forth the broker's obligations as an intermediary. A broker who acts as an intermediary:

- Must treat all parties to the transaction impartially and fairly;
- May, with the parties' written consent, appoint a different license holder associated with the broker to each party (owner and buyer) to communicate with, provide opinions and advice to, and carry out the instructions of each party to the transaction.
- Must not, unless specifically authorized in writing to do so by the party, disclose:
 - that the owner will accept a price less than the written asking price;
 - that the buyer/tenant will pay a price greater than the price submitted in a written offer; and
 - any confidential information or any other information that a party specifically instructs the broker in writing not to disclose, unless required to do so by law.

AS SUBAGENT: A license holder acts as a subagent when aiding a buyer in a transaction without an agreement to represent the buyer. A subagent can assist the buyer but does not represent the buyer and must place the interests of the owner first.

TO AVOID DISPUTES, ALL AGREEMENTS BETWEEN YOU AND A BROKER SHOULD BE IN WRITING AND CLEARLY ESTABLISH:

- The broker's duties and responsibilities to you, and your obligations under the representation agreement.
- Who will pay the broker for services provided to you, when payment will be made and how the payment will be calculated.

LICENSE HOLDER CONTACT INFORMATION: This notice is being provided for information purposes. It does not create an obligation for you to use the broker's services. Please acknowledge receipt of this notice below and retain a copy for your records.

| | | | |
|---|-----------------------|-------------------------------|-------------------------|
| Champions DFW Commercial Realty, LLC Licensed Broker/Broker Firm Name or Primary Assumed Business Name | 584733 License No. | tim@championedfw.com Email | (817) 488-4333 Phone |
| Jim Kelley Designated Broker of Firm | 545842 License No. | tim@championedfw.com Email | (817) 488-4333 Phone |
| _____ Licensed Supervisor of Sales Agent/ Associate | _____ License No. | _____ Email | _____ Phone |
| _____ Sales Agent/Associate's Name | _____ License No. | _____ Email | _____ Phone |

FOR LEASE
OFFICE BUILDING



1601 LANCASTER DR, GRAPEVINE, TX 76051

BROKER CONTACTS



ERIC GOODWIN

Vice President

C: 214.642.8928

eric@championsdfw.com



GRANT GOODWIN

Sales Associate

C: 972.632.9608

grant@championsdfw.com



JIM KELLEY

Principal/Broker

C: 817.909.7875

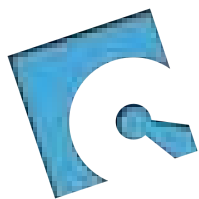
jim@championsdfw.com

Champions DFW Commercial Realty

1725 E Southlake Blvd, Suite 100, Southlake, TX 76092

©2023 Champions DFW Commercial Realty LLC.

All rights reserved. The information contained herein was obtained from sources believed to be reliable. It is subject to verification. The presentation of this property is submitted subject to errors, omissions, change of price or conditions, prior to sale or lease, or withdrawal without notice



CHAMPIONS™
DFW COMMERCIAL REALTY

Champions DFW Commercial Realty

1725 E Southlake Blvd, Suite 100, Southlake, TX 76092

©2023 Champions DFW Commercial Realty LLC.

All rights reserved. The information contained herein was obtained from sources believed to be reliable. It is subject to verification. The presentation of this property is submitted subject to errors, omissions, change of price or conditions, prior to sale or lease, or withdrawal without notice