



VENTURE INDUSTRIAL

Bakker Landing | I-29 exit

Clean Industrial Space For Lease



2012 Venture Street (Unit #2)
Tea, SD 57064



size

2,700 sqft



price

\$9.00 / sqft NNN



details

- Clean shop space, previously used for food production.
- 1 restroom
- Mezzanine storage space
- Concrete paving
- 20' sidewalls
- 16'x14' overhead door
- Reznor Heater
- Air conditioning
- Floor drain
- Front / rear walk-in doors



layout

Wide open clean shop space, with restroom.



location

Property is located in the Bakker Landing development near Southwest Sioux Falls (SD), with close proximity to Interstate 29 and Highway 106.

Information deemed reliable but not guaranteed.

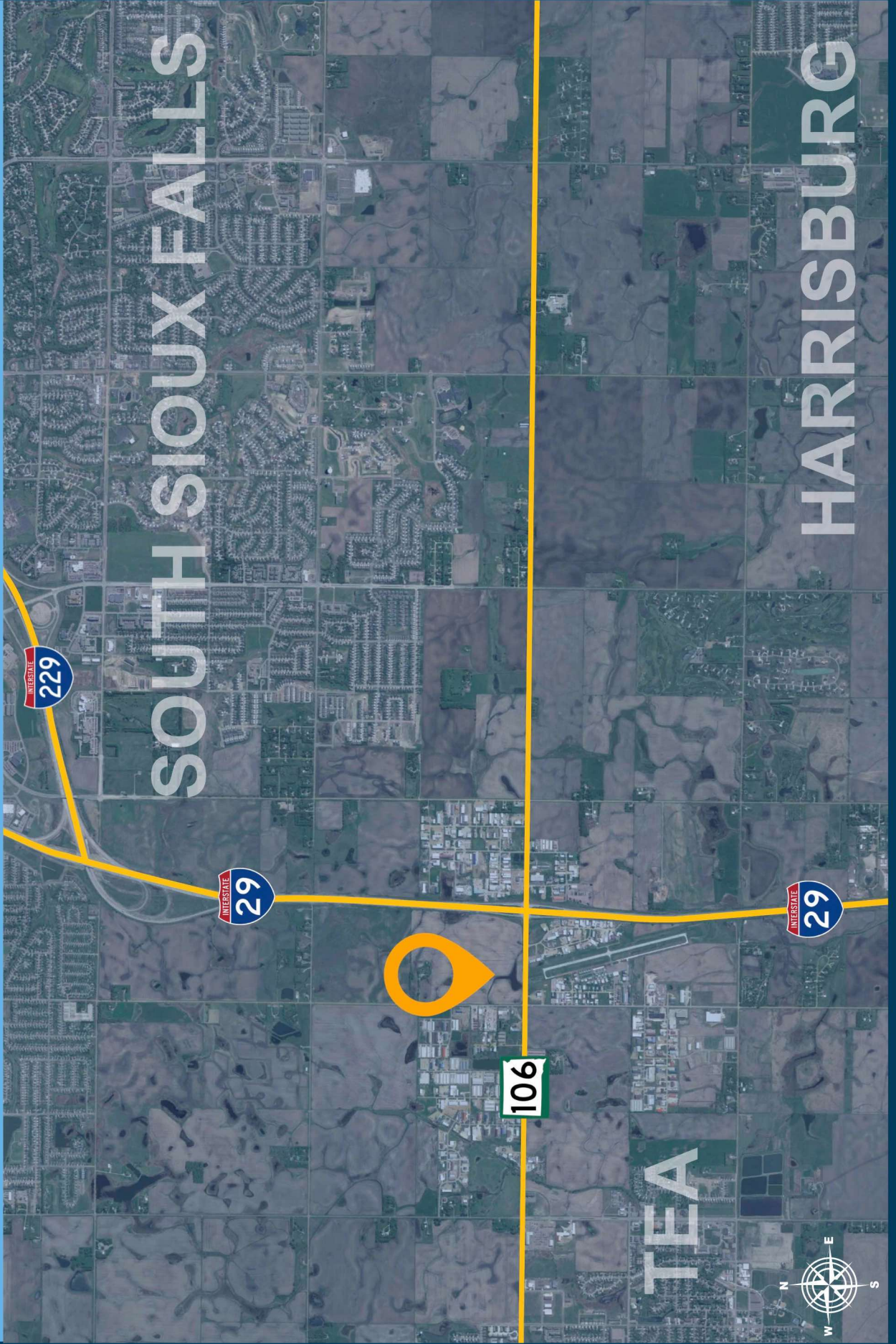


Lake Lorraine | 2571 S. Westlake Drive #100
Sioux Falls, South Dakota 57106
VBCLink.com | 605.361.8211

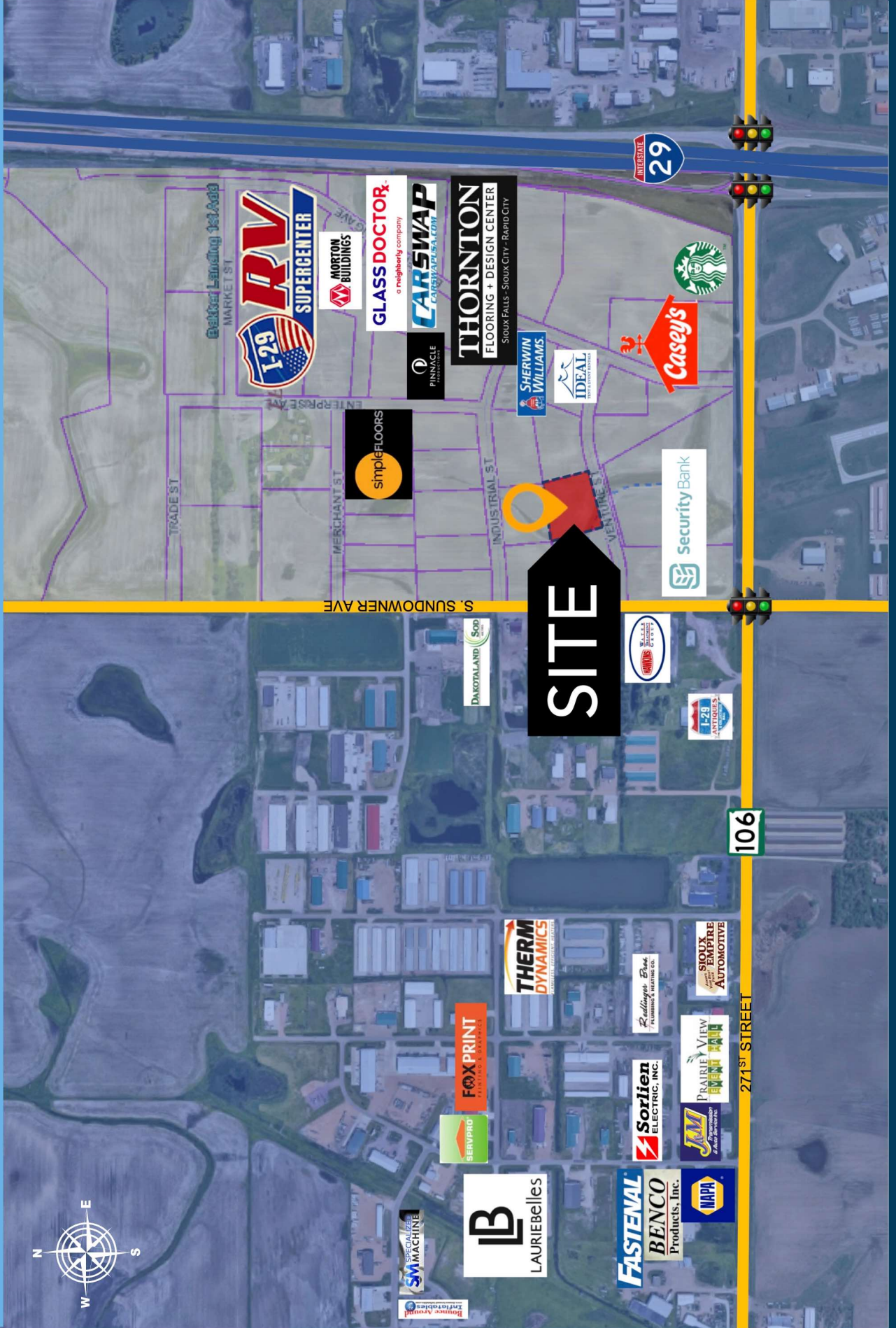


605.376.0127
Ryan@VBCLink.com

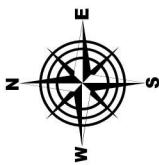
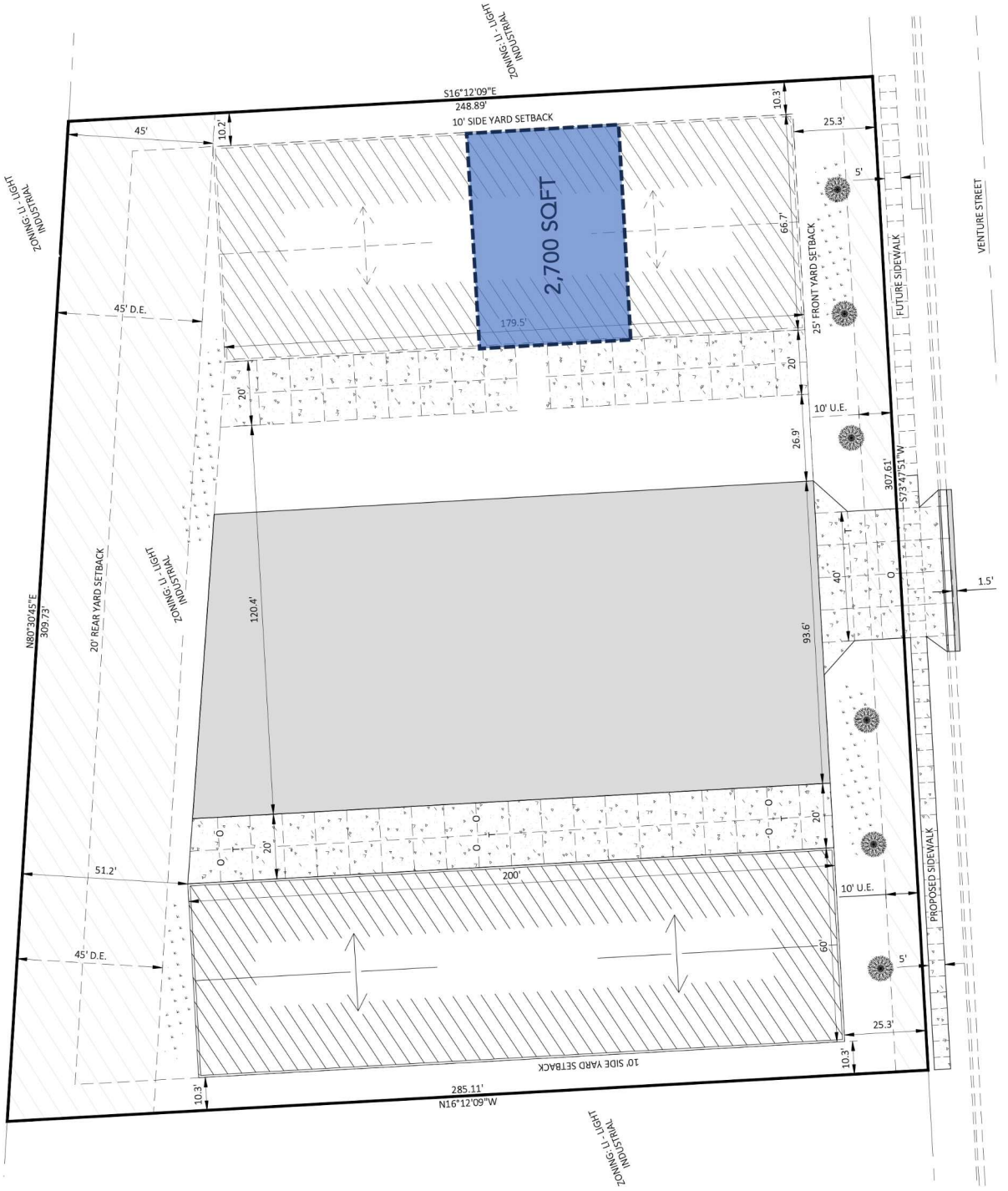
LOCATION MAP



AREA MAP



SITEPLAN



PROPERTY PHOTOS

