



## Class A office in Bushnell's Basin

15,000 Sq Ft Office Suite

Available Starting May 1, 2019

179 Sully's Trail, Route 96 Corridor, Busnell's Bassin

- Less than 1/2 mile from I-490 and within close proximity to NYS Thruway
- Class A construction and finishes, completed in 2002
- Live call centre and on-site facilities personnel for immediate service
- Community orientation: events, food trucks, newsletters, discounts, picnics, and more
- Nestled within a quite residential neighborhood with immediate access to Cresscent Trail in Periton

### Contact Us

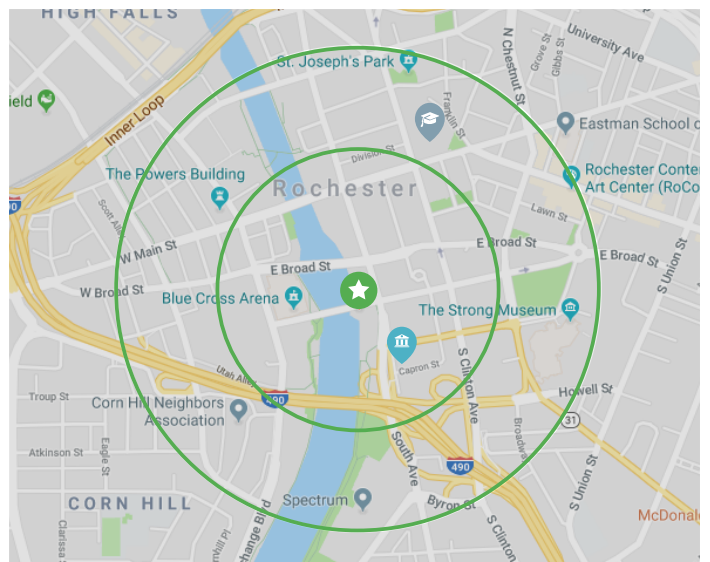
1173 Pittsford-Victor Road, Suite 140

Pittsford, NY 14534

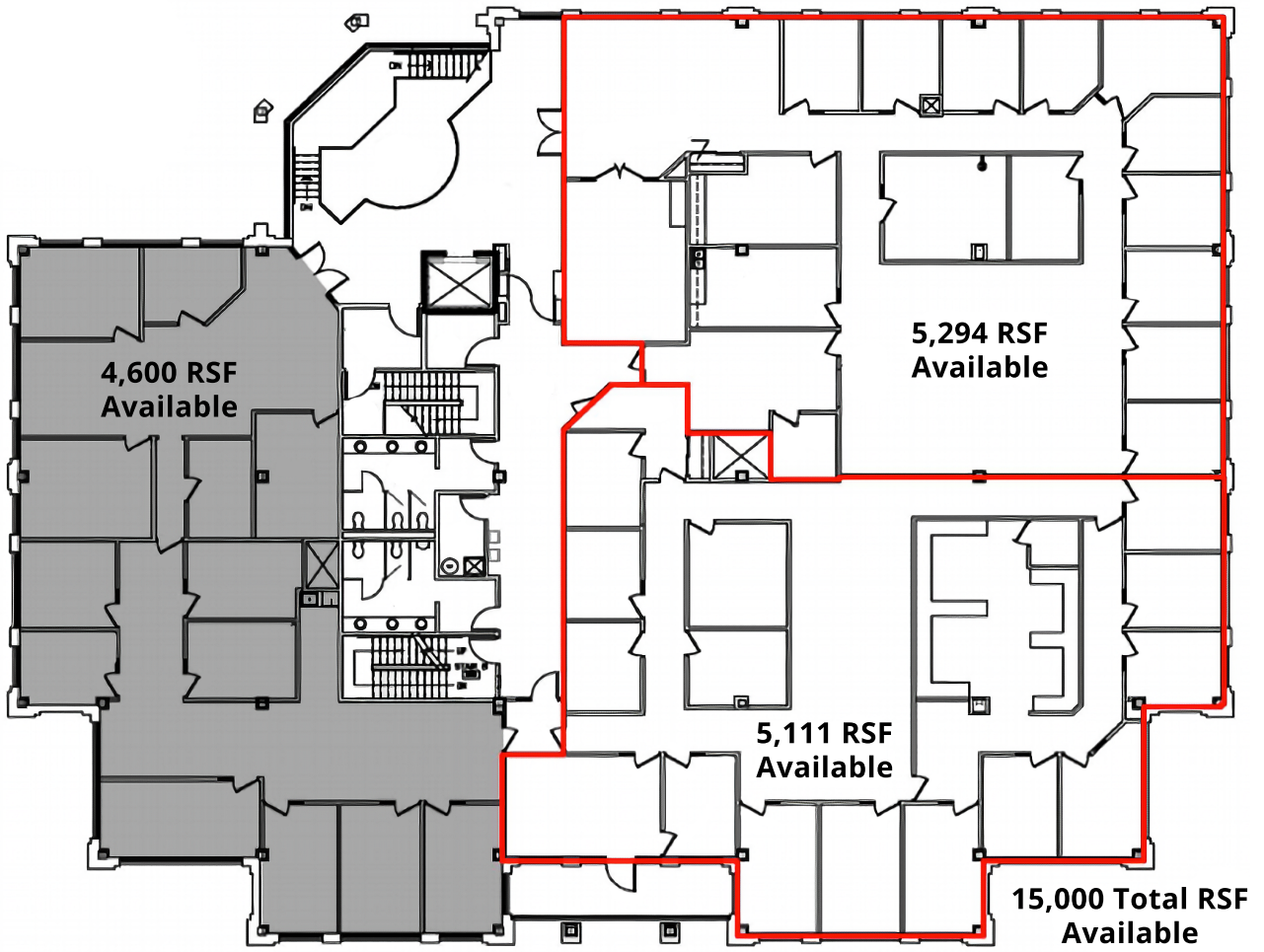
585-248-8822

[www.rycomgmt.com](http://www.rycomgmt.com)

[jryan@rycomgmt.com](mailto:jryan@rycomgmt.com)



# 179 Sully's Trail



# 179 Sully's Trail

