

Midtown Property For Lease

11 & 23 N.W. 10th Street

Oklahoma City, Oklahoma 73103

Lease Rate:
\$30.00 PSF NNN



Highlights

+Available Square Feet:

–1,069± - 13,000+ RSF

+Parking:

–(28) Free surface spaces

–(60) Additional parking spaces available in close proximity

+Private outdoor seating area provides great views of Downtown Oklahoma City skyline

+Exterior signage available

+Short walk to Midtown restaurants, bars, shopping & museums

+Perfect space for retail, office, or a showroom

Conceptual Renderings



23 N.W. 11th St

+Available Square Feet:

-13,000+ RSF

*Not currently divided into suites, will subdivide as required

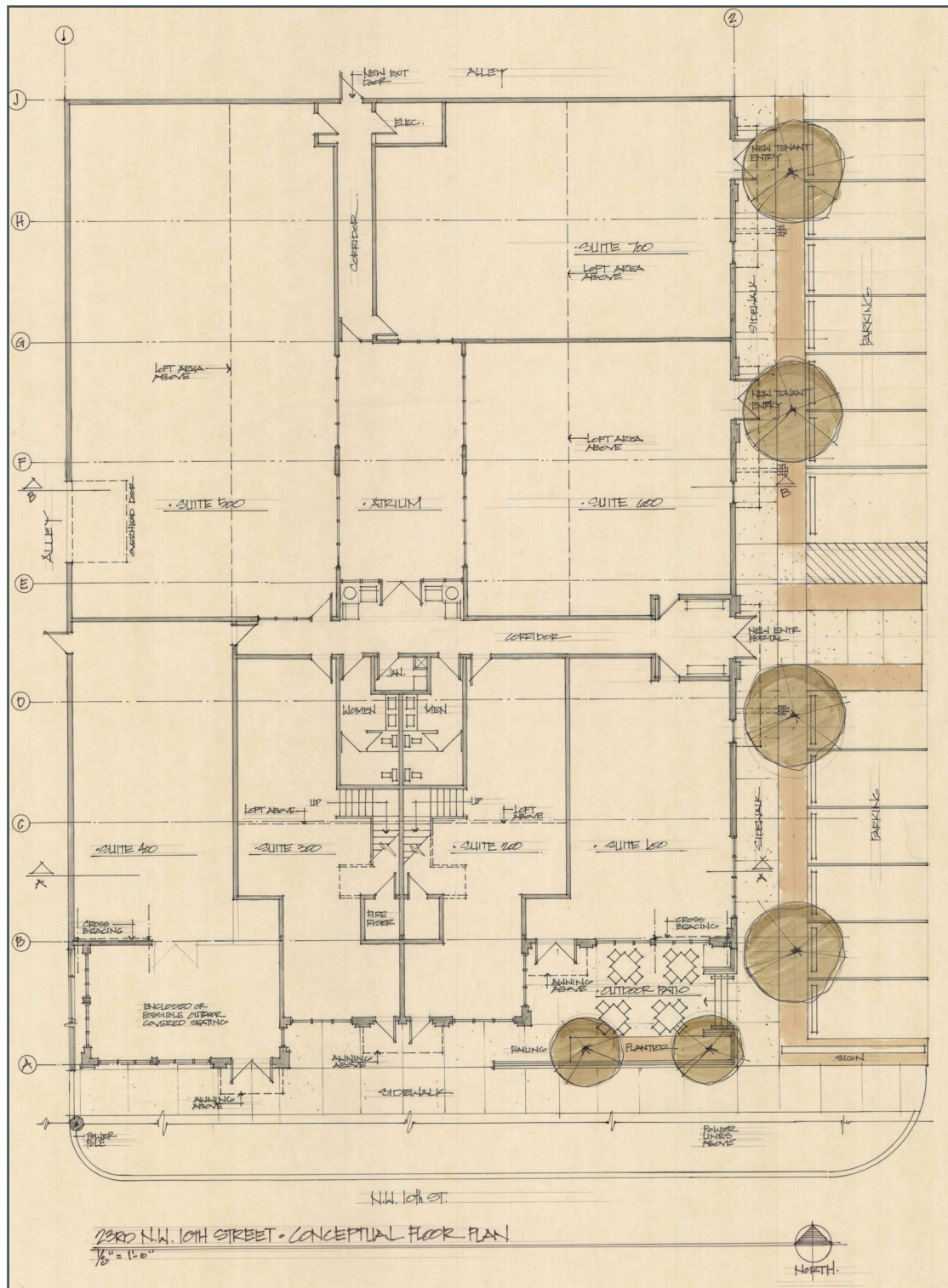


Current



Future

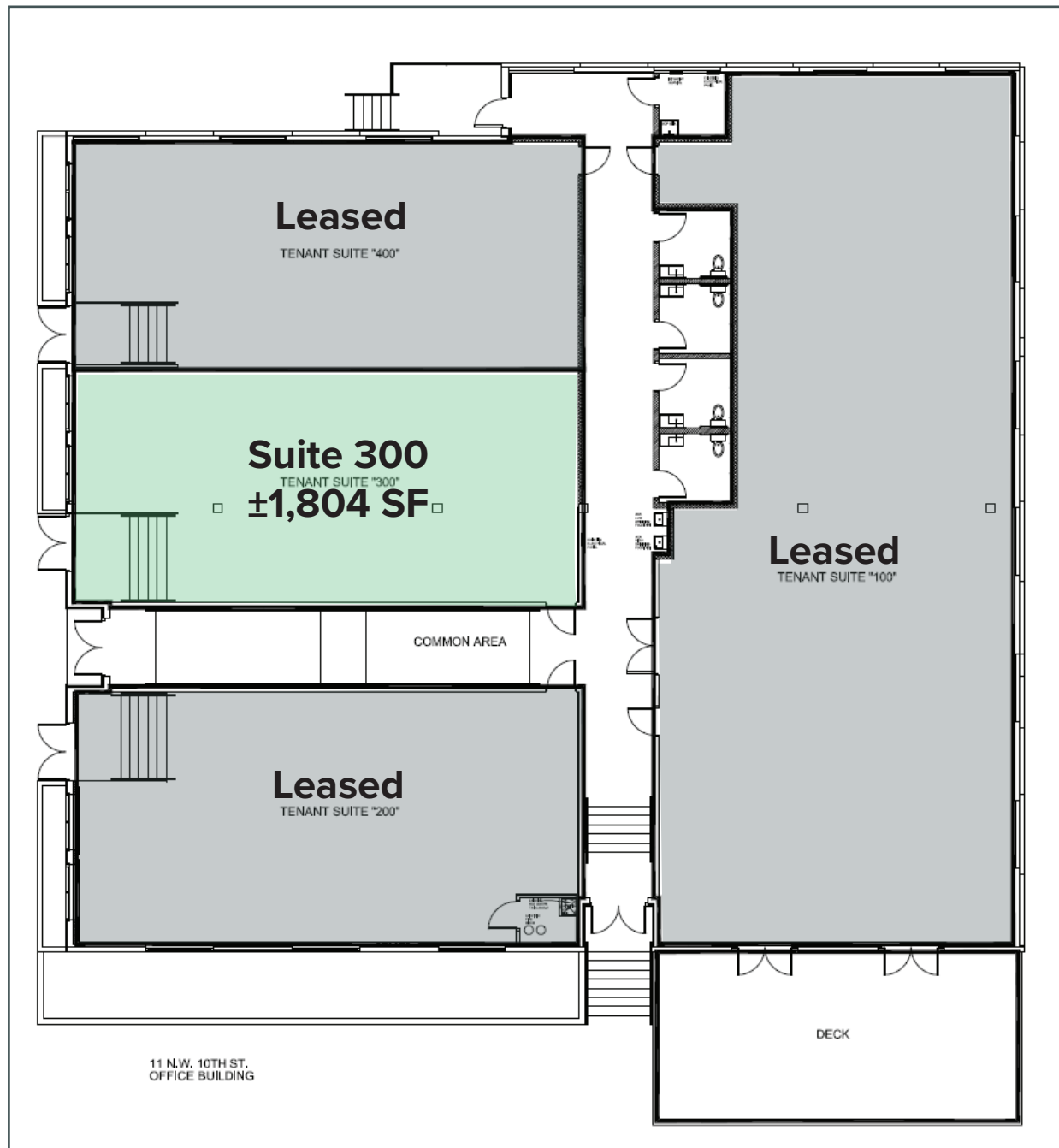




11 N.W. 10th St

+Available Square Feet:

-1,804± RSF



Contact Us



Midtown

Walking distance
to shops and
restaurants



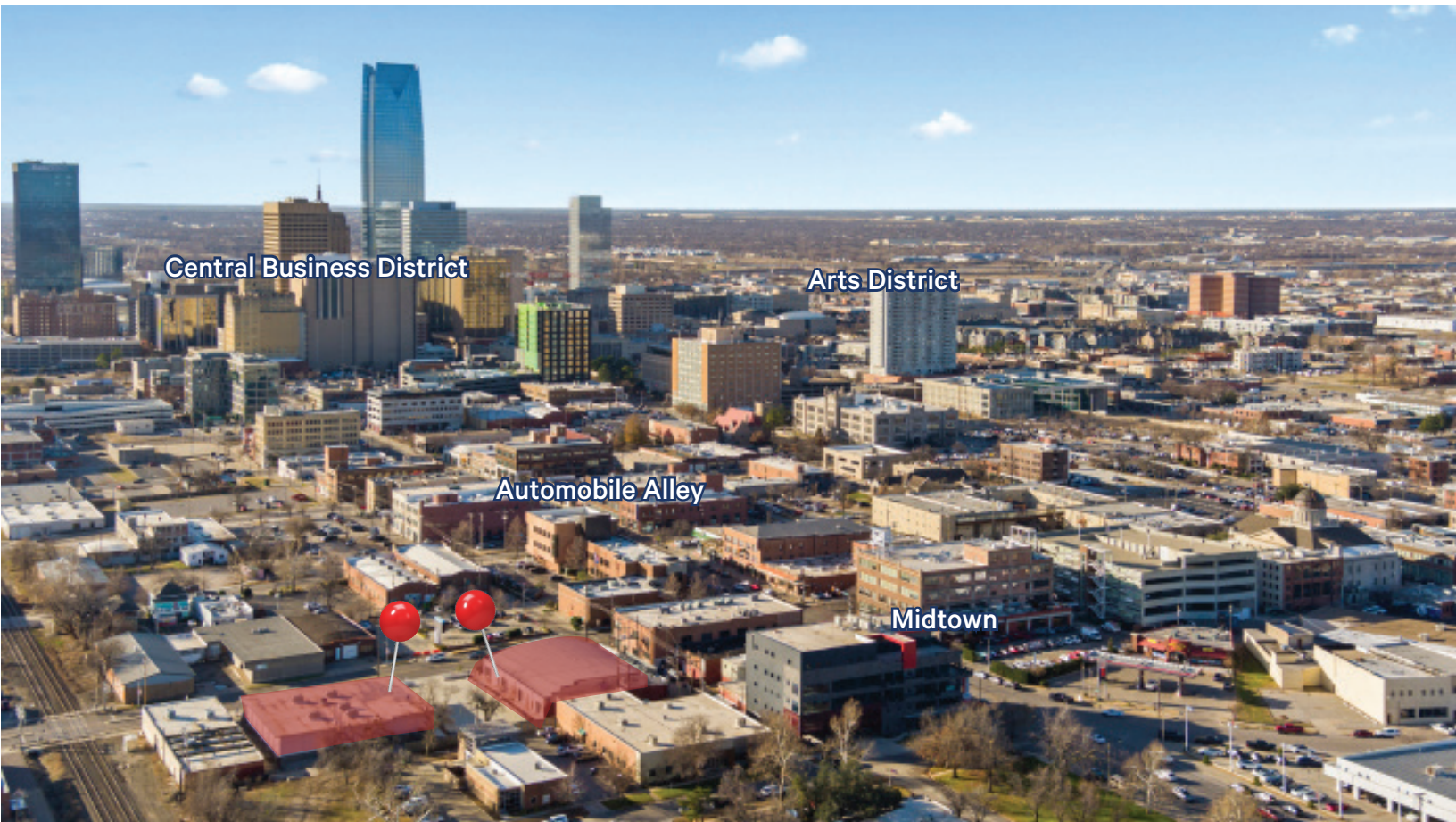
Growth

4.16% Population
growth within 1 mile



Traffic

13,051 VPD @ NW
10th & N Broadway



Amy Dunn, CCIM
First Vice President
+1 405 209 3656
amy.dunn@cbre.com

Tori Meyer
Associate
+1 405 550 4474
tori.meyer@cbre.com

Lease Rate:
\$30.00 PSF NNN

CBRE