

\$250,000



Lepi & Associates
Real Estate Services

MEDICAL OFFICE

830 BETHESDA DRIVE, ZANESVILLE

Move in ready medical condo suite located adjacent to the hospital. This unit is located in Doctors Park #1, condo #4. Recently refreshed with paint, new blinds, and new flooring throughout.

- ✓ Common Area Parking
- ✓ 1425 SQ FT
- ✓ Medical Use Only

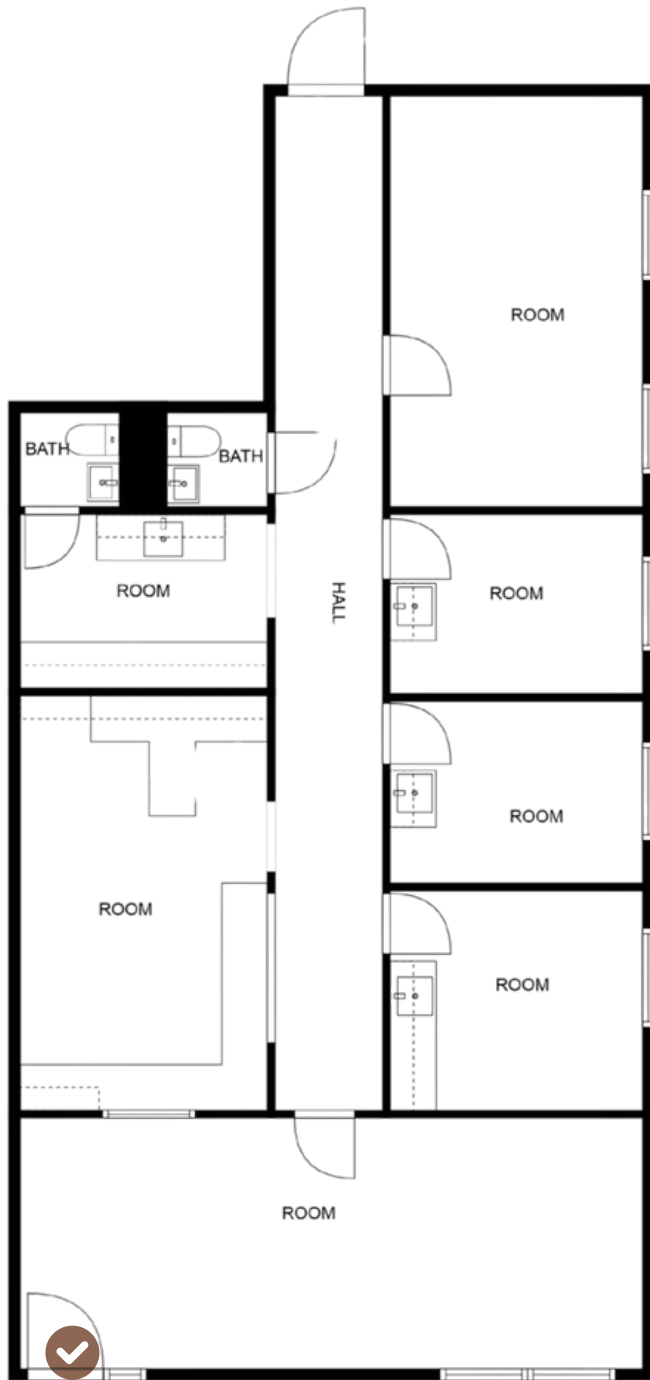
Contact Us



Roberta (Bobbi) Lepi, Broker
740-891-1068



830 Bethesda Drive, Zanesville



Lepi & Associates
Real Estate Services



Roberta (Bobbi) Lepi, Broker
740-891-1068

Includes 3 exam rooms with sinks, private office, nurses station, large waiting area, 2 restrooms, and lab area. Large common area parking is shared with the other 2 owners of the building. All utilities are currently tied together with the other unit owners and the owner will be billed for their proportionate share of electric, water, sewer, trash and CAM.

