

BUILDING  
2

1,200-4,800 SF OF INDUSTRIAL SPACE  
AVAILABLE FOR LEASE

## CONTACT



1710 E PIPER

**DARREN PUETZ**

208.656.2273

[darren@tokcommercial.com](mailto:darren@tokcommercial.com)

## HIGHLIGHTS



- Brand new warehouse built with flexibility in mind.
- One - 12,000 SF industrial shop building.
- Versatile space sizes ranging from 1,200 SF - 4,800 SF
- 12x14 overhead doors.
- Optional office, or bring your custom floorplan
- Interior finish can be build to suit.

## AVAILABLE



SPACE	RSF	RATE
Building 2	1,200 - 4,800	Contact Agent



# MULTIPLE SHOP SIZES AVAILABLE | 1,200 - 4,800 SF



**4,800 SF  
AVAILABLE**

Demisable to  
1,200 SF





**DETAILS**

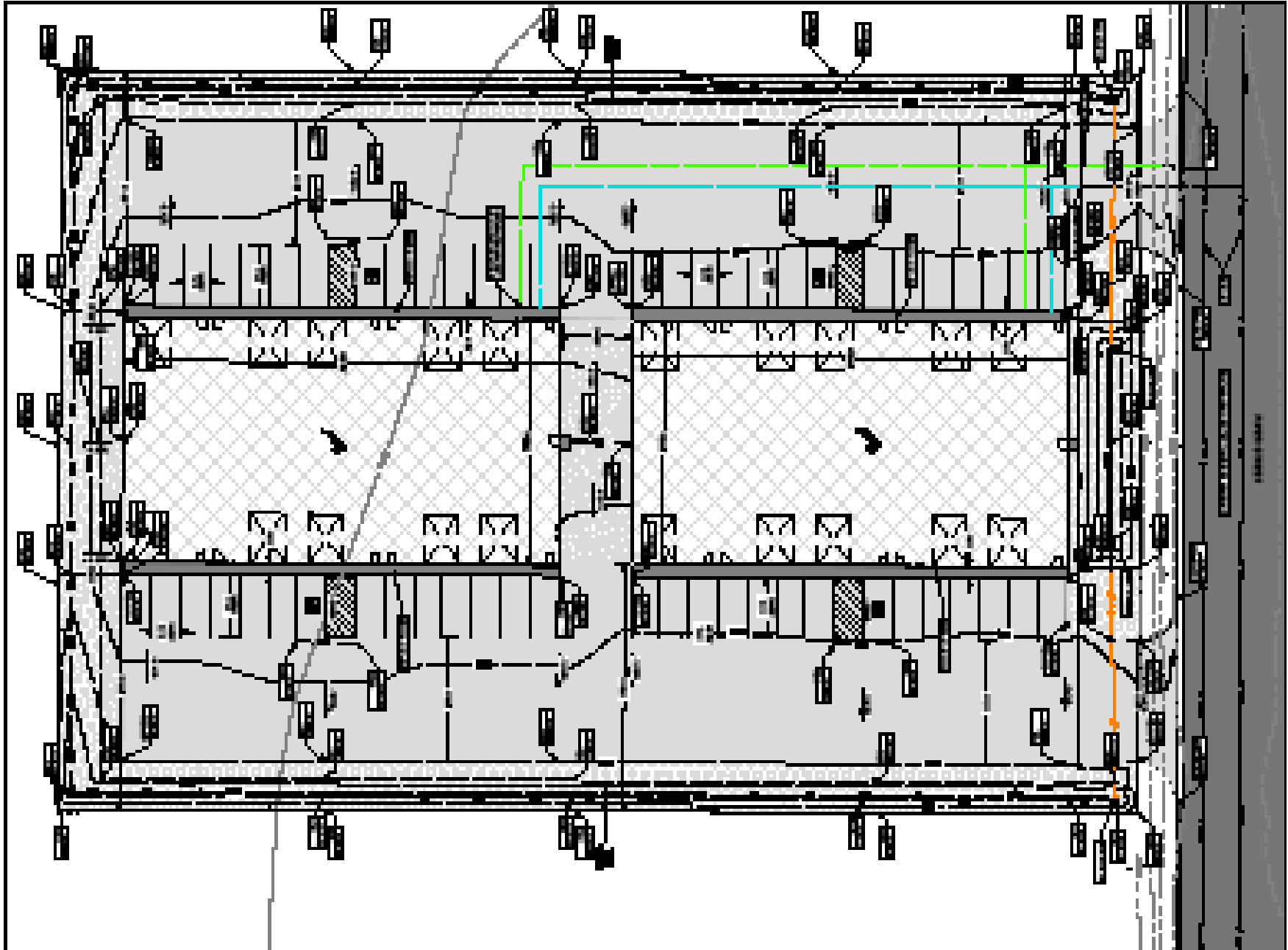
<b>Submarket:</b>	Idaho Falls
<b>Bldg Type:</b>	Warehouse/Flex
<b>Bldg Size:</b>	12,000 SF (entire bldg)
<b>Lot Size:</b>	.99 Acres
<b>Parking:</b>	Ample
<b>Year Built:</b>	2022
<b>Zoning:</b>	Bonneville County C-2 General Commercial
<b>Lease Type:</b>	MG

**1710 E PIPER**





# SITE PLAN



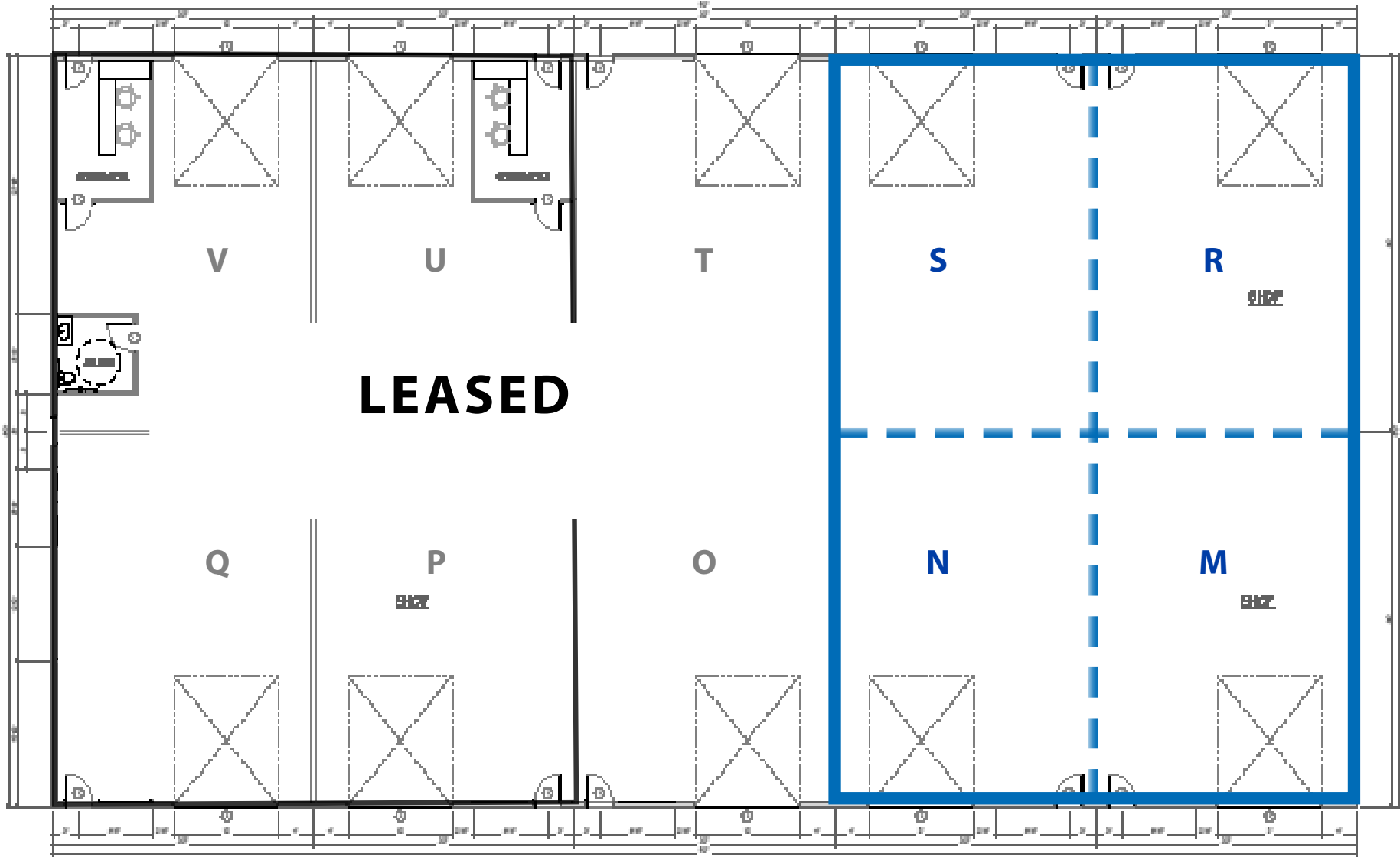
## 1710 E PIPER

THIS PROPERTY IS EXCLUSIVELY MARKETING BY TOK EASTERN IDAHO LLC DBA TOK COMMERCIAL

This information was obtained from sources believed reliable but cannot be guaranteed. Any opinions or estimates are used for example only.

# FLOORPLAN

BLDG 2 | 12,000 SF (POTENTIAL TO DEMISE TO 1,200 SF)



## 1710 E PIPER

THIS PROPERTY IS EXCLUSIVELY MARKETING BY TOK EASTERN IDAHO LLC DBA TOK COMMERCIAL  
This information was obtained from sources believed reliable but cannot be guaranteed. Any opinions or estimates are used for example only.



# LOCATOR AERIAL



RAIL ACCESS



Holmes Ave

E Lincoln Rd

Woodruff Ave

PINECREST  
GOLF COURSE



# AERIAL

