

6990 MURTHUM AVENUE
WARREN, MICHIGAN

INDUSTRIAL LEASE
20,970 Square Feet Available



**SIGNATURE
ASSOCIATES**
KNOW SIGNATURE | KNOW RESULTS

DENTON INDUSTRIAL PARK



PROPERTY FEATURES

- 20,970 square feet available
- 3,740 square feet office
- 24' clear height
- (4) 14' x 14', 12' x 14' grade level doors
- (1) exterior truckwell
- 1200 amps, 480 volts power
- Very clean building
- Just north of 13 Mile Road
- Lease Rate: \$7.95/sq. ft. NNN



For more information, please contact:

JOE HAMWAY
(248) 948 0113
jhamway@signatureassociates.com

STEVE GORDON
(248) 948 0101
sgordon@signatureassociates.com

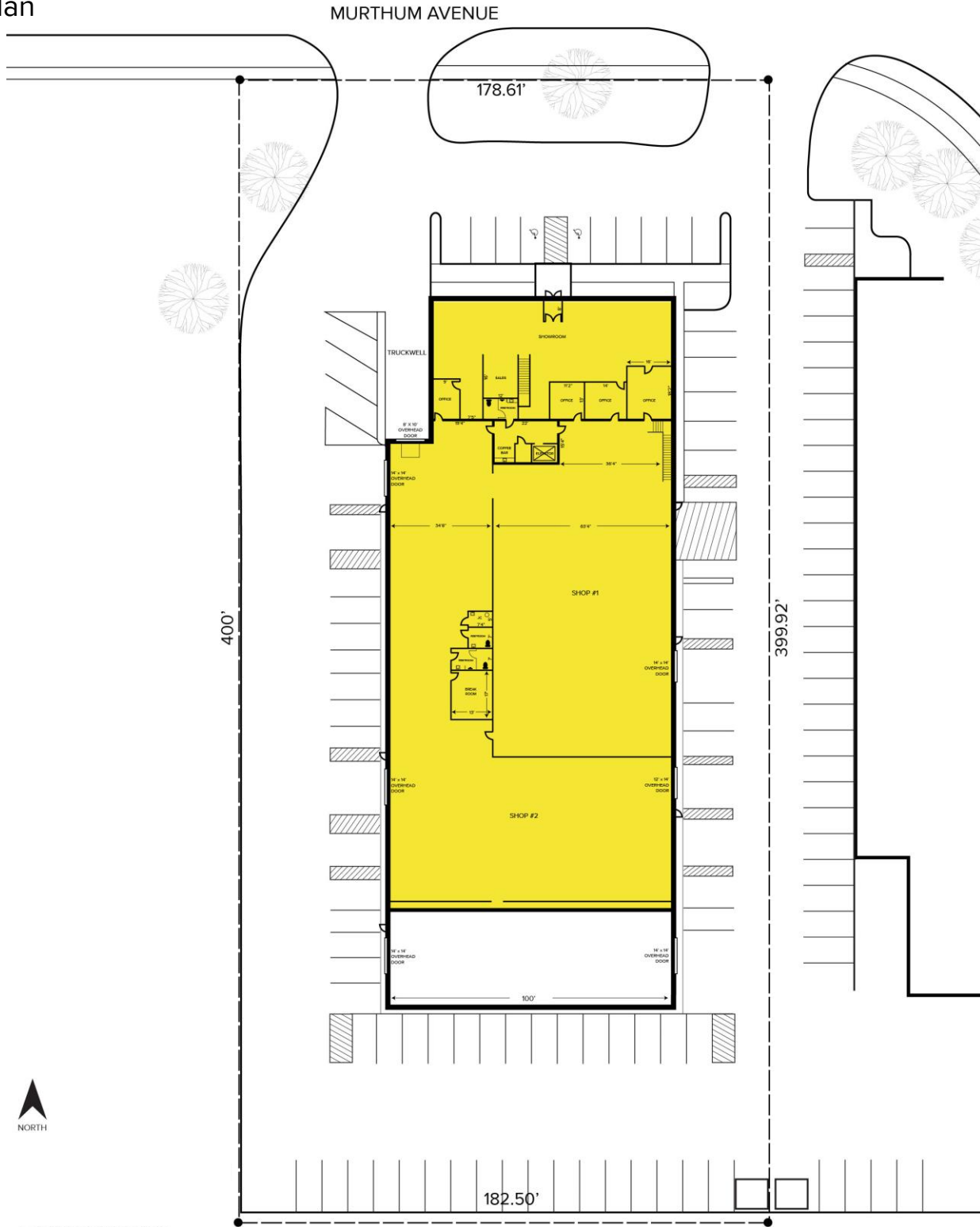
SIGNATURE ASSOCIATES
One Towne Square, Suite 1200
Southfield, MI 48076
www.signatureassociates.com

6990 Murthum Avenue – Warren, Michigan

Industrial For Lease

20,970
Square Feet
AVAILABLE

Site Plan



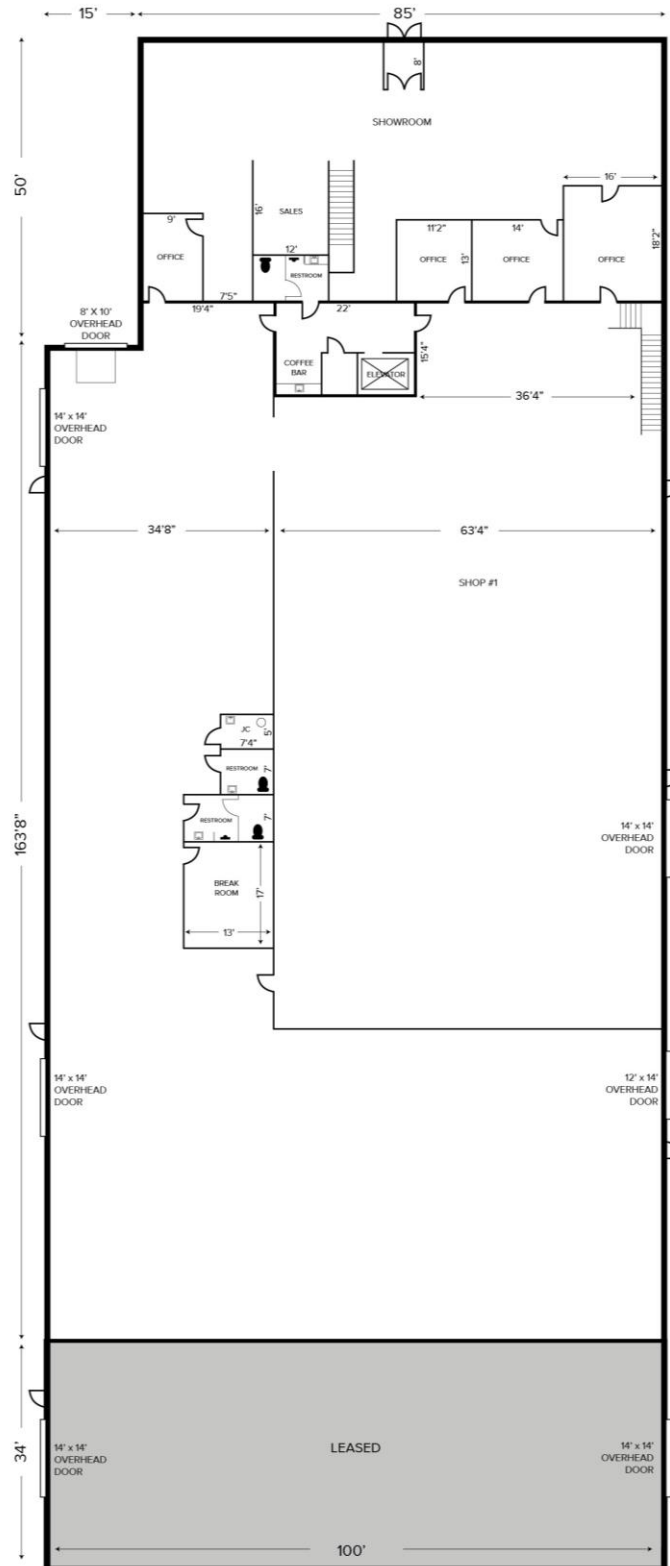
For more information, please contact:

JOE HAMWAY
(248) 948 0113
jhamway@signatureassociates.com

STEVE GORDON
(248) 948 0101
sgordon@signatureassociates.com

SIGNATURE ASSOCIATES
One Towne Square, Suite 1200
Southfield, MI 48076
www.signatureassociates.com

Floor Plan



For more information, please contact:

JOE HAMWAY
(248) 948 0113
jhamway@signatureassociates.com

STEVE GORDON
(248) 948 0101
sgordon@signatureassociates.com

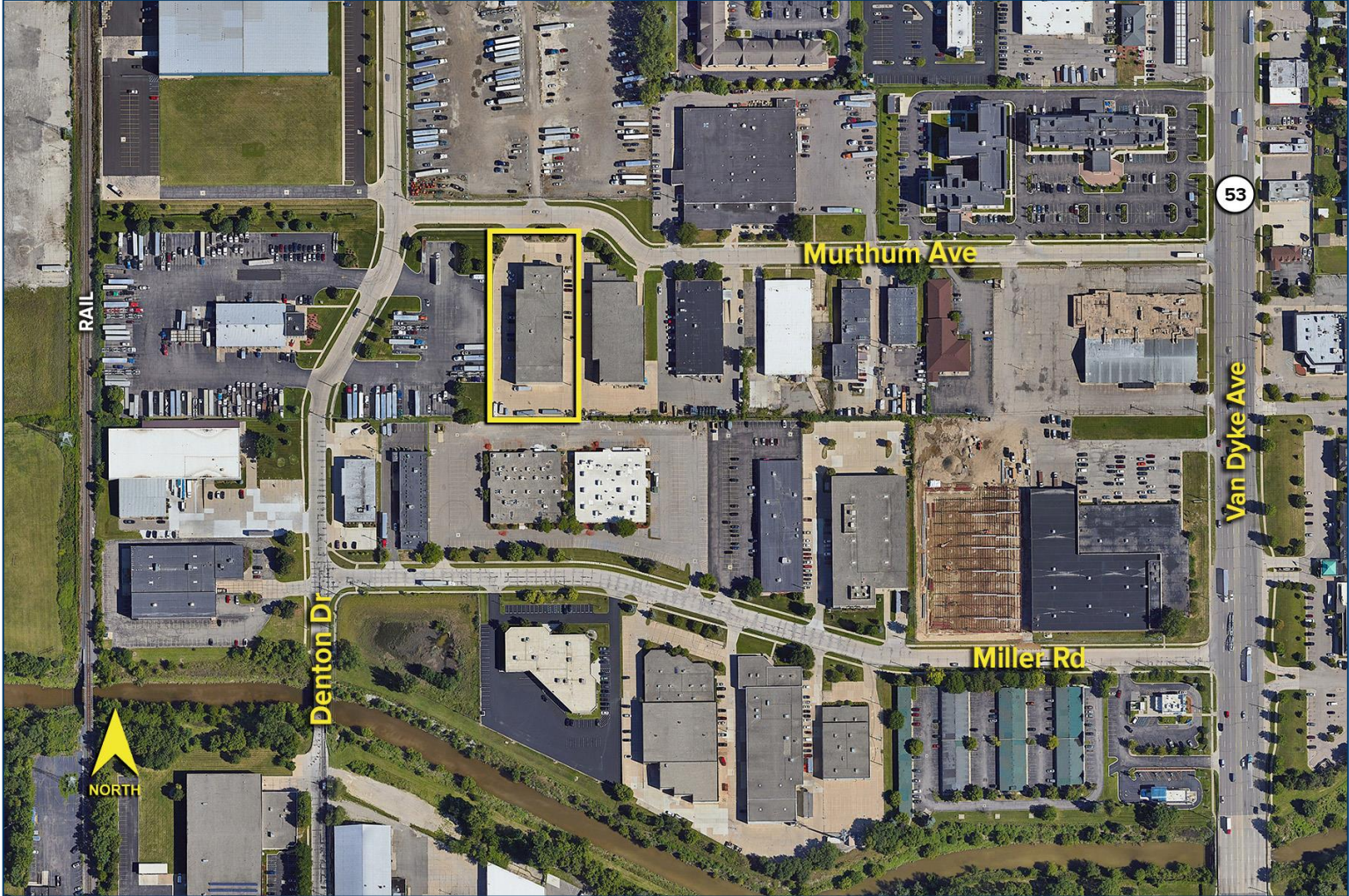
SIGNATURE ASSOCIATES
One Towne Square, Suite 1200
Southfield, MI 48076
www.signatureassociates.com

6990 Murthum Avenue – Warren, Michigan

Industrial For Lease

20,970
Square Feet
AVAILABLE

Aerial



For more information, please contact:

JOE HAMWAY
(248) 948 0113
jhamway@signatureassociates.com

STEVE GORDON
(248) 948 0101
sgordon@signatureassociates.com

SIGNATURE ASSOCIATES
One Towne Square, Suite 1200
Southfield, MI 48076
www.signatureassociates.com

Information is subject to verification and no liability for errors or omissions is assumed. Price is subject to change and listing withdrawal.