

SALE

16 SUMMERLIN LANE

St. Augustine, FL 32095



PROPERTY DESCRIPTION

This Turn Key Pad Site offers prime US-1 frontage and is ready to support a single-story building of up to 5,200 square feet. The site benefits from ample shared parking, ensuring convenience for visitors and staff. Additionally, it features a shared master retention system and a lift station that serves the parcel, providing efficient water management and infrastructure support. This setup makes the site highly desirable for development.

PROPERTY HIGHLIGHTS

- Zoning: Commercial, General (CG)
- Seller Financing Available!
- 160" of Frontage along Heavily Traveled US-1!
- Turn Key Approved Site Ready for Construction!
- Available for Build to Suit Sale or Lease!

OFFERING SUMMARY

Sale Price:	\$649,000
Lot Size:	0.83 Acres
Building Size:	5,200 SF

DEMOGRAPHICS	0.3 MILES	0.5 MILES	1 MILE
Total Households	70	261	408
Total Population	154	583	943
Average HH Income	\$80,615	\$80,765	\$75,627

Eric Maimo
(904) 537-6443

Bob Buckmaster, CCIM
(904) 827-1717



**COLDWELL BANKER
COMMERCIAL**
PREMIER PROPERTIES

SALE

16 SUMMERLIN LANE

St. Augustine, FL 32095



Eric Maimo
(904) 537-6443

Bob Buckmaster, CCIM
(904) 827-1717

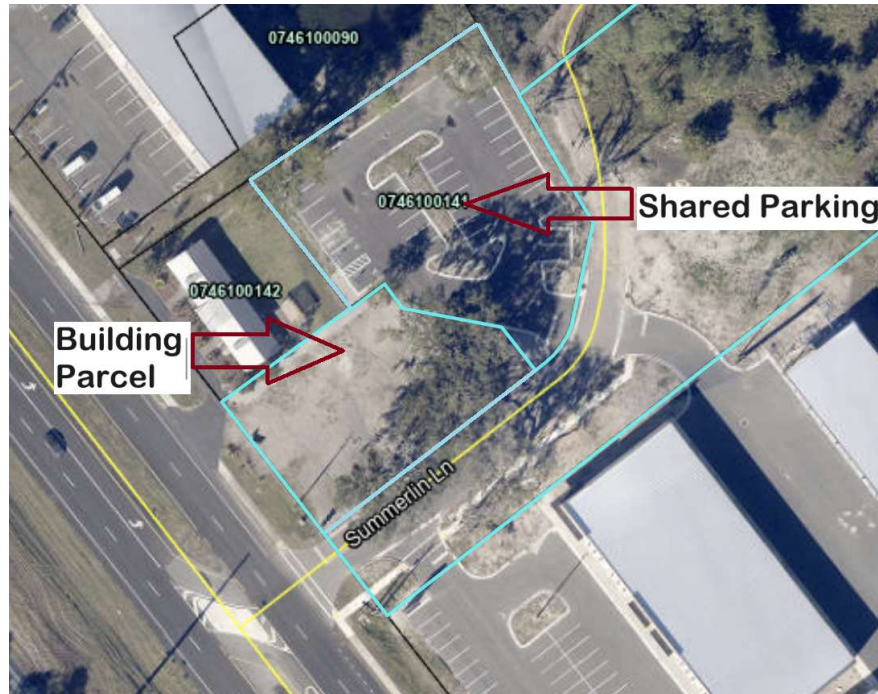


**COLDWELL BANKER
COMMERCIAL**
PREMIER PROPERTIES

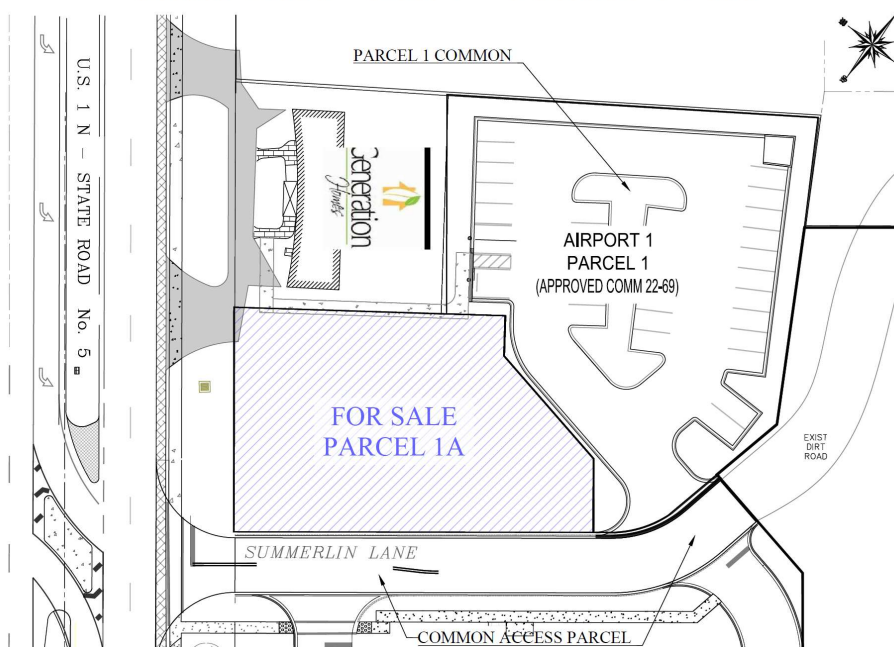
SALE

16 SUMMERLIN LANE

St. Augustine, FL 32095



AIRPORT ONE ~ PARCEL 1A



Eric Maimo
(904) 537-6443

Bob Buckmaster, CCIM
(904) 827-1717



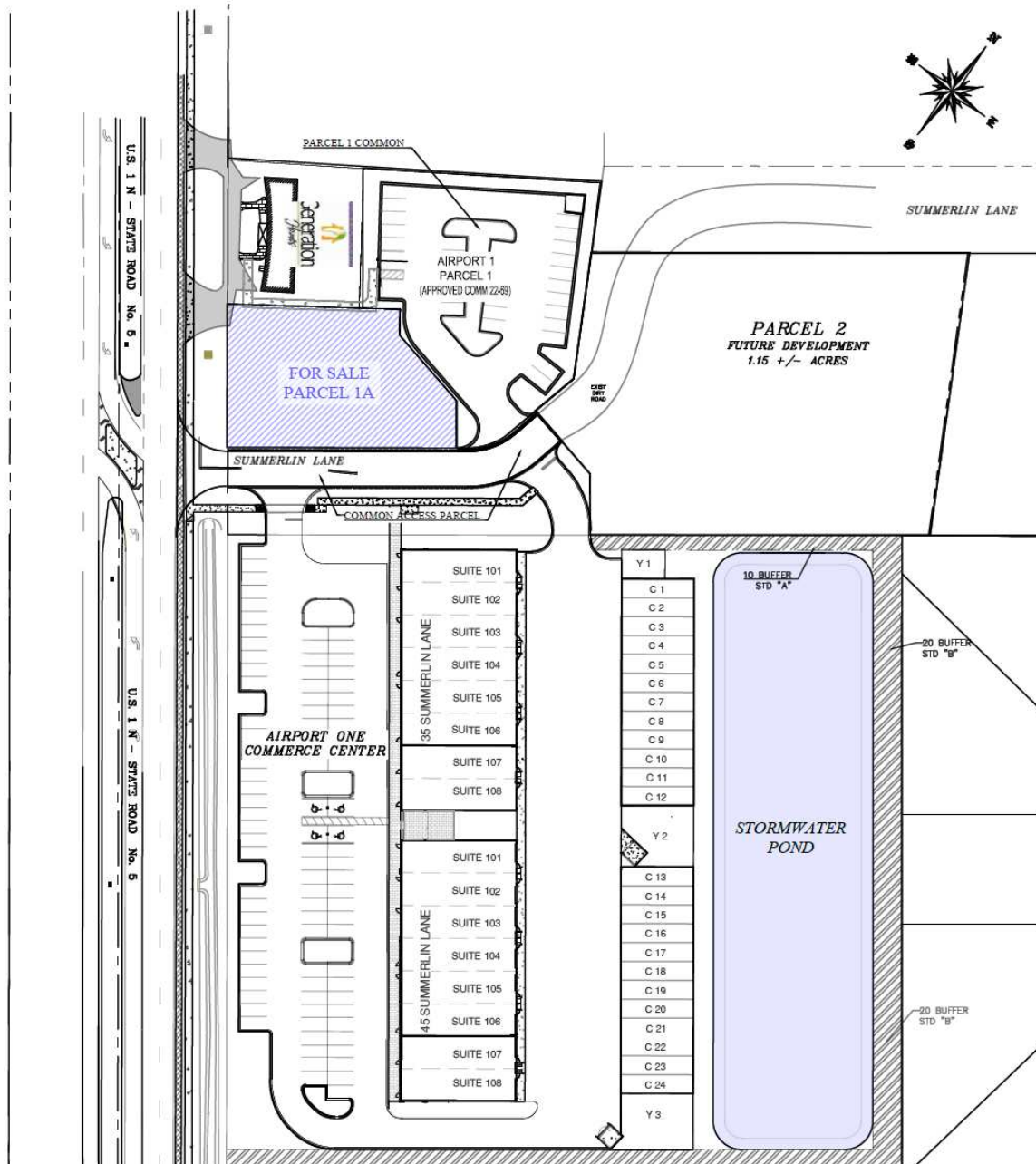
**COLDWELL BANKER
COMMERCIAL**
PREMIER PROPERTIES

SALE

16 SUMMERLIN LANE

St. Augustine, FL 32095

AIRPORT ONE ST. AUGUSTINE, FLORIDA



Eric Maimo
(904) 537-6443

Bob Buckmaster, CCIM
(904) 827-1717

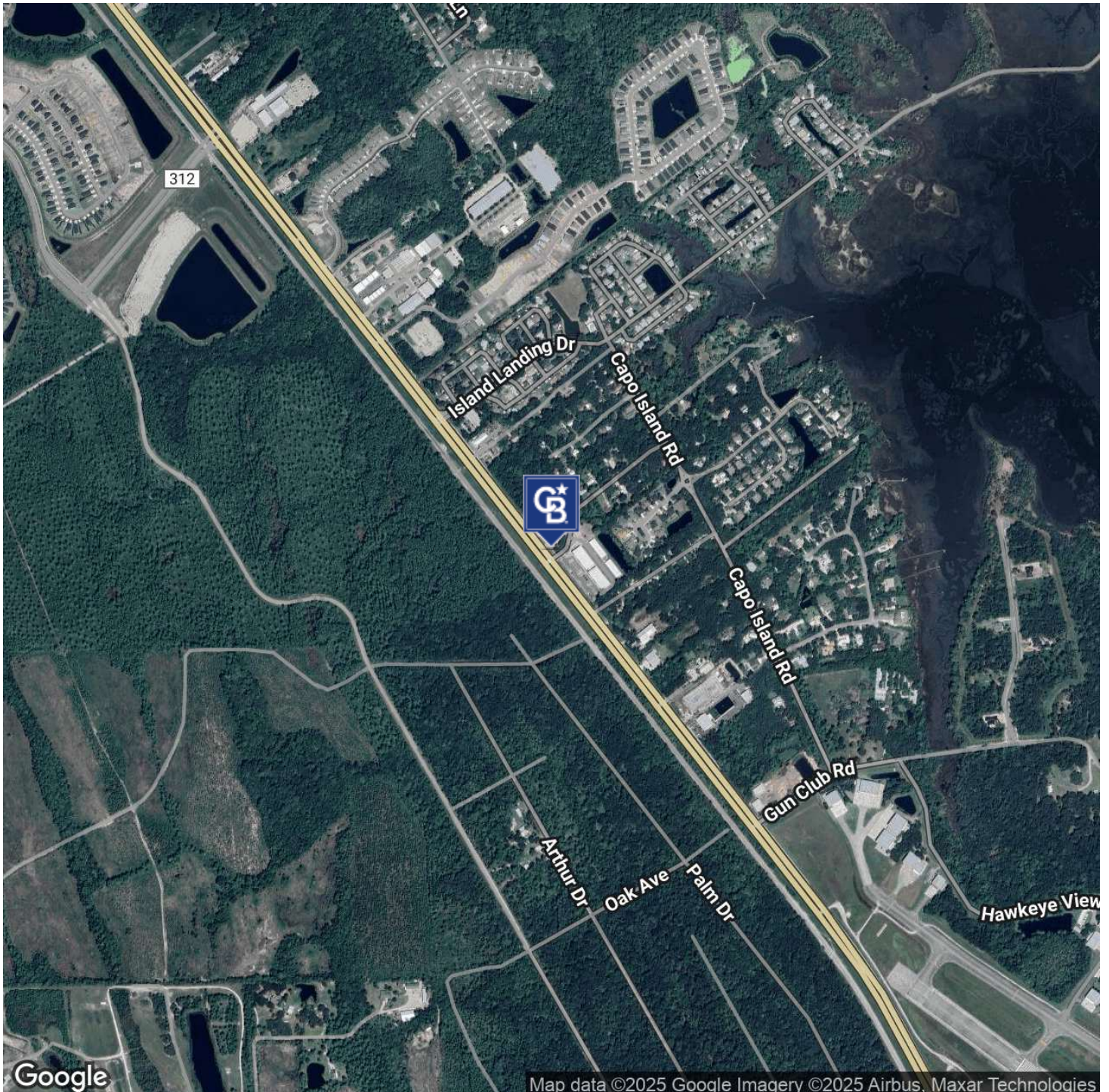


**COLDWELL BANKER
COMMERCIAL**
PREMIER PROPERTIES

SALE

16 SUMMERLIN LANE

St. Augustine, FL 32095



Eric Maimo
(904) 537-6443

Bob Buckmaster, CCIM
(904) 827-1717

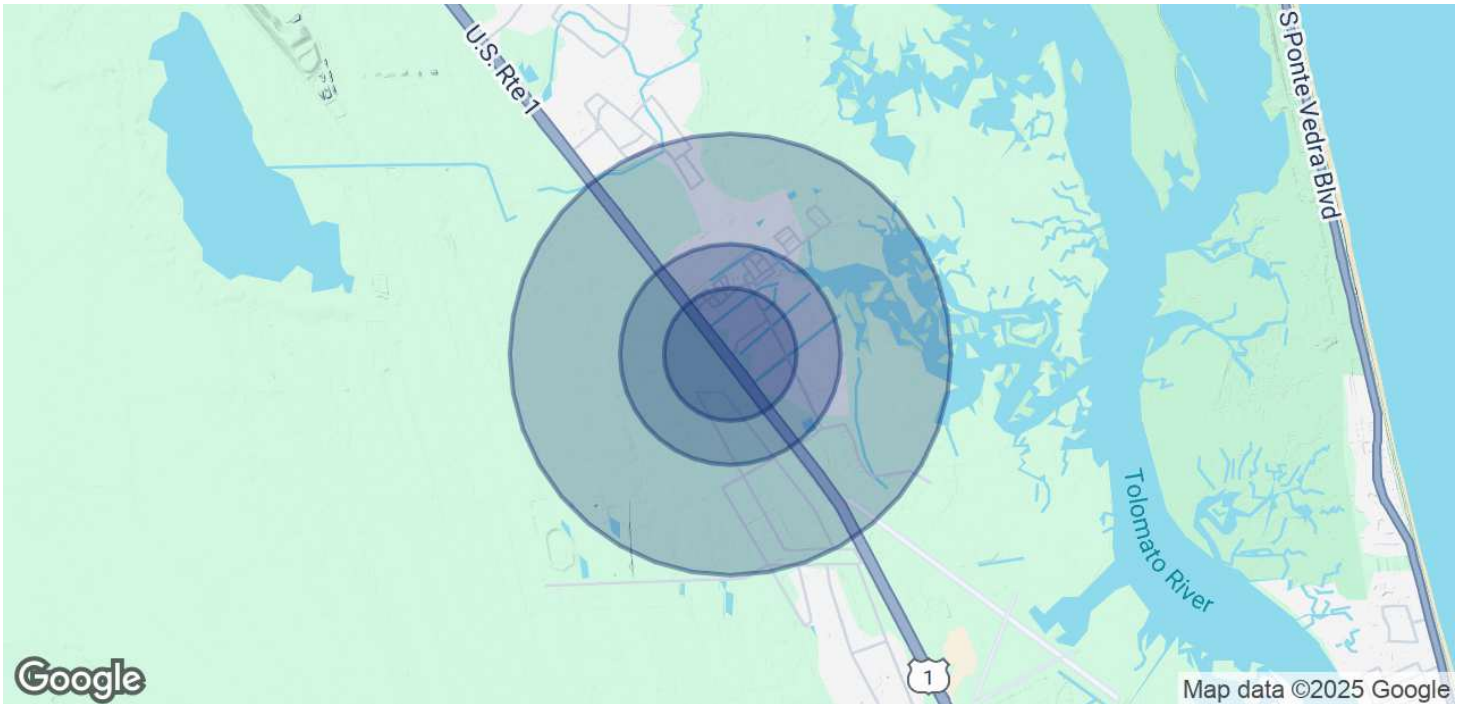


**COLDWELL BANKER
COMMERCIAL**
PREMIER PROPERTIES

SALE

16 SUMMERLIN LANE

St. Augustine, FL 32095



POPULATION	0.3 MILES	0.5 MILES	1 MILE
Total Population	154	583	943
Average Age	48	48	46
Average Age (Male)	48	48	46
Average Age (Female)	48	48	47

HOUSEHOLDS & INCOME	0.3 MILES	0.5 MILES	1 MILE
Total Households	70	261	408
# of Persons per HH	2.2	2.2	2.3
Average HH Income	\$80,615	\$80,765	\$75,627
Average House Value	\$384,633	\$387,012	\$391,336

Demographics data derived from AlphaMap

Eric Maimo
(904) 537-6443

Bob Buckmaster, CCIM
(904) 827-1717



**COLDWELL BANKER
COMMERCIAL**
PREMIER PROPERTIES