



Colliers

MASTERCARD

ST. LUKE'S  
URGENT CARE

WINGHAVEN  
COUNTRY CLUB

INTERSTATE 64  
2 MIN | 0.5 MI

Technology Dr | 7,071 VPD

1.95 Acres

Winghaven Blvd | 18,759 VPD

FOR SALE | LEASE | BTS

3019 Winghaven Blvd  
O'Fallon, MO 63368

Asking Sale Price:

\$765,000

Lease or BTS Price:

Contact Broker

CONTACT US

**Chad Burkemper, SIOR**

Executive Vice President  
+1 314 584 6279  
chad.burkemper@colliers.com

**Colliers**

101 South Hanley Road  
Suite 1400  
St. Louis, MO 63105  
+1 314 863 4447  
colliers.com/stlouis

## 1.95-Acre Pad Site Available For Development

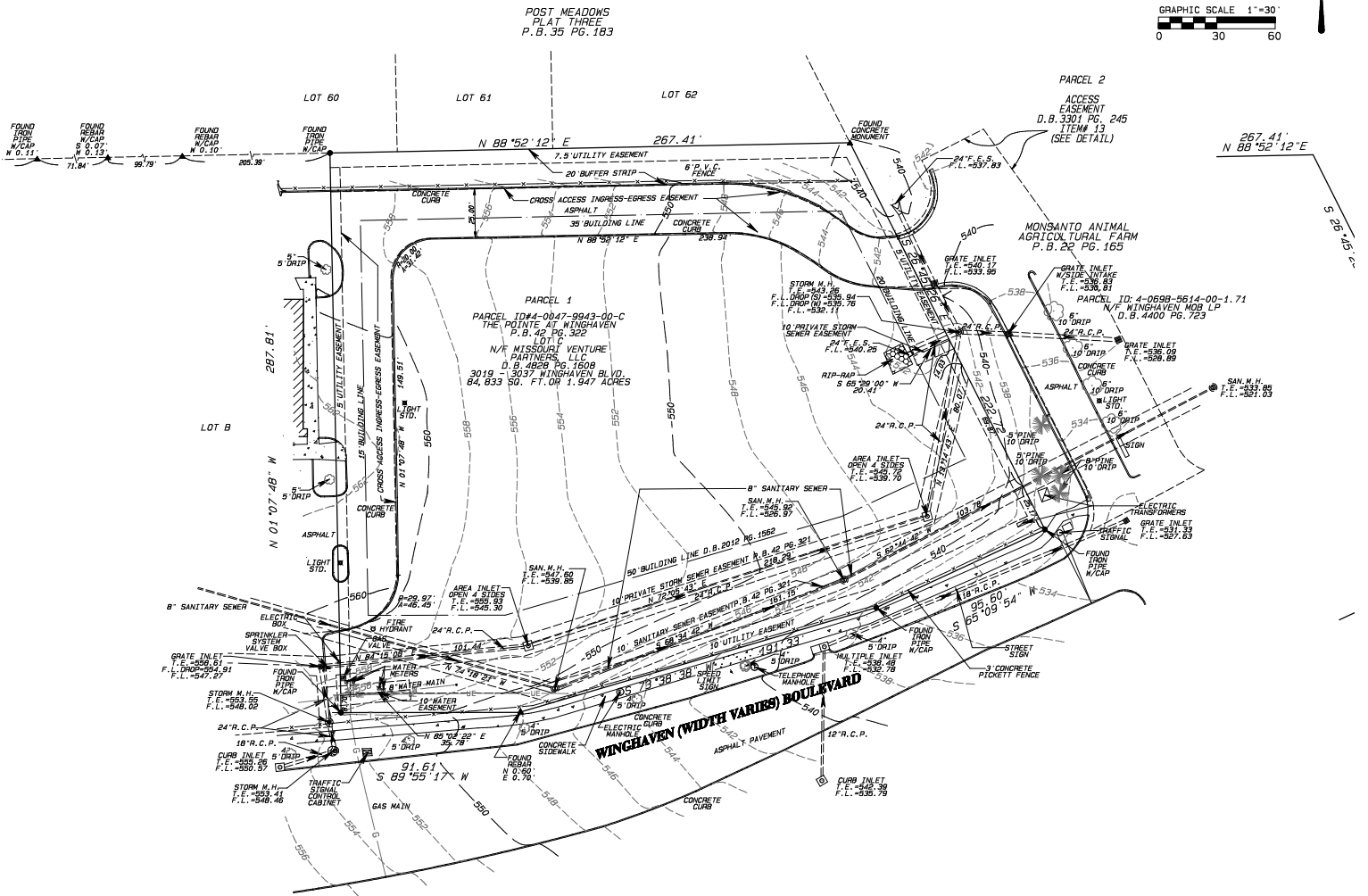
### Property Highlights

- 1.95 acres available for sale, lease or build-to-suit
- Perfect for Retail/Office/Medical use
- Adjacent to Mastercard and St. Luke's Urgent Care
- Located near the intersection of Winghaven Boulevard and Technology Drive with controlled traffic lights
- Easy highway access to Interstate 64

This document/email has been prepared by Colliers for advertising and general information only. Colliers makes no guarantees, representations or warranties of any kind, expressed or implied, regarding the information including, but not limited to, warranties of content, accuracy and reliability. Any interested party should undertake their own inquiries as to the accuracy of the information. Colliers excludes unequivocally all inferred or implied terms, conditions and warranties arising out of this document and excludes all liability for loss and damages arising there from. This publication is the copyrighted property of Colliers and/or its licensor(s). © 2025. All rights reserved. This communication is not intended to cause or induce breach of an existing listing agreement.

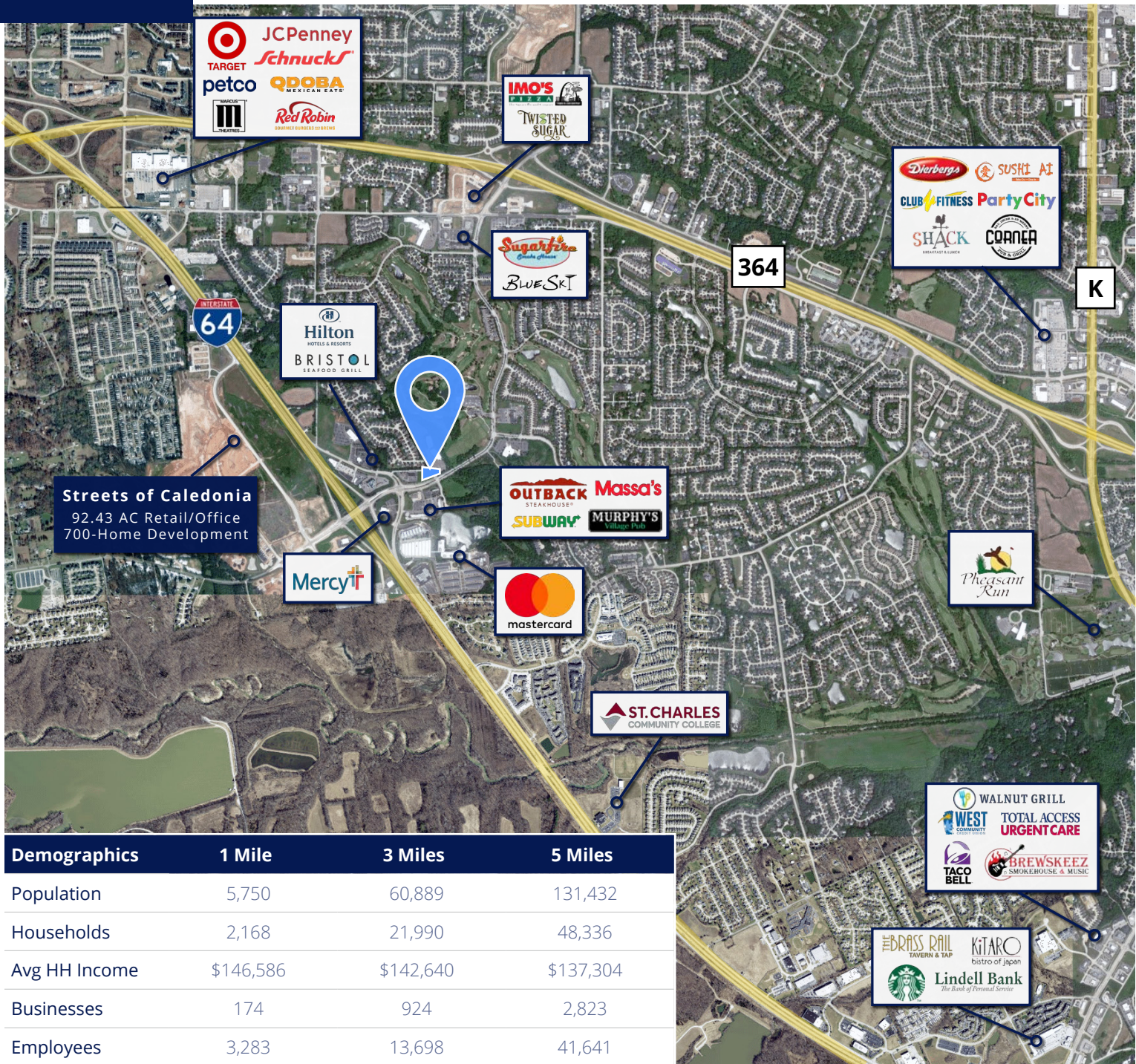


# Survey





## LOCATION



## CONTACT US

### Chad Burkemper, sior

Executive Vice President  
+1 314 584 6279  
chad.burkemper@colliers.com

### Colliers

101 South Hanley Road  
Suite 1400  
St. Louis, MO 63105  
+1 314 863 4447  
colliers.com/stlouis

