

FOR LEASE

2203 CASCADE PARKWAY, SAN ANTONIO, TX 78224

YARROW

BUSINESS PARK



LLANO REALTY PARTNERS
LRP

ABOUT THE PROPERTY:

Yarrow Business Park is a 66,250 SF industrial warehouse project located in the South submarket of San Antonio. 1,250 SF suites featuring a private office, restroom, and a grade-level roll-up door are available now. Tenants benefit from ample parking and quick access to IH-35 and SW Military Drive. These suites are ideal for light industrial or commercial businesses. Flexible leasing terms are available.

FEATURES:

- 1,250 SF suites available
- Grade-level loading (10'x10')
- 16' - 24' clear height
- 3-phase power (400 amps)
- Office/bathroom in place
- Flexible terms available
- Quick access to IH-35 and SW Military Drive

FOR LEASE

2203 CASCADE PARKWAY, SAN ANTONIO, TX 78224

YARROW

BUSINESS PARK

LLANO REALTY PARTNERS

LRP

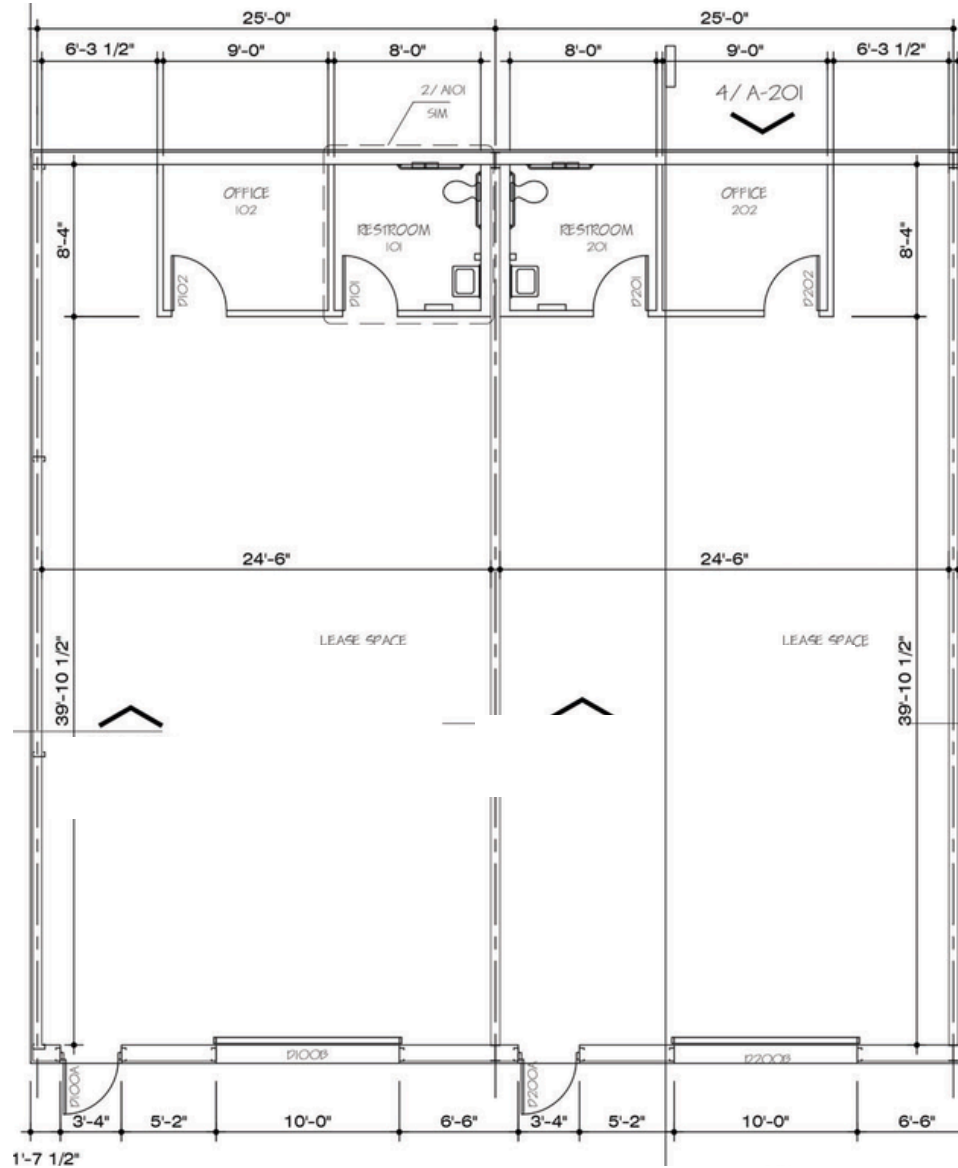
1,900 SF INDUSTRIAL FLEX SPACES AVAILABLE



EXTERIOR PHOTOS



FLOOR PLAN



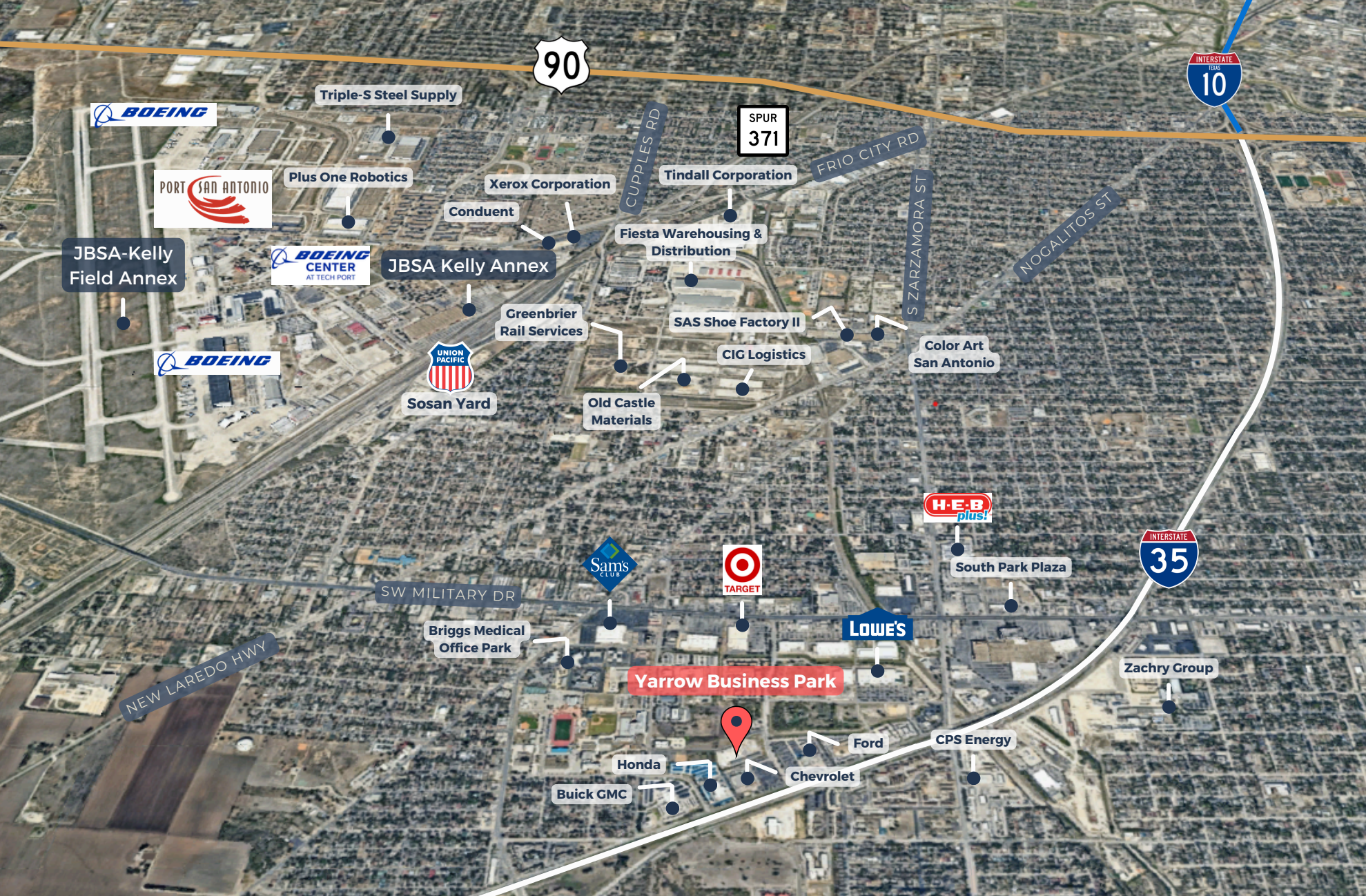
**all suite floor plans identical*

AVAILABILITY



LOT 1
 BLOCK 2
 NCB 13401
 IN 35 / YARROW BLVD, SUBD.
 (8,000) ACRES TRACT
 VOL 5548 Pg 214
 (SPR BEXAR COUNTY, TEXAS)

AERIAL & HIGHWAY ACCESS





CONTACT OUR TEAM



Jake Esparza
Associate
jesparza@llanorealty.com
(210) 874-5314



Chris Moran
Associate
cmoran@llanorealty.com
(210) 951-5689



Colin McLellan
Partner
cmclellan@llanorealty.com
(210) 908-6345