

# 3,164 - 7,050 SF

## Industrial Property For Lease



**BROWN**  
COMMERCIAL GROUP, INC.

**1230-1300 MARK ST., BENSENVILLE, IL 60106**



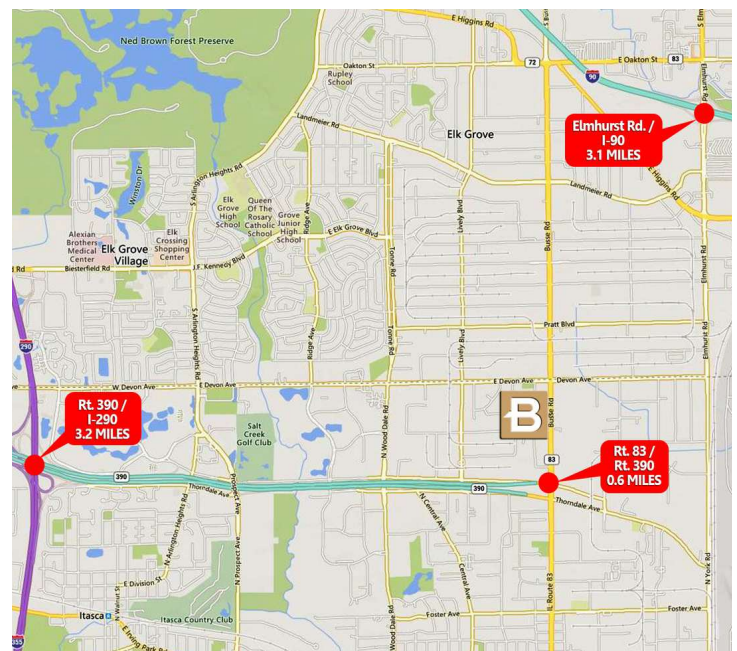
### LOCATION DESCRIPTION

Established industrial park location with easy access to major transportation routes via nearby Rt. 83, Rt. 390, I-90 and I-290.

SPACES	LEASE RATE	SPACE SIZE	TYPE
1230	\$11.00 SF/yr	4,197 SF	Industrial / Flex
1244	\$11.00 SF/yr	3,164 SF	Industrial / Flex
1260	\$11.00 SF/yr	7,050 SF	Industrial / Flex
1296	\$11.00 SF/yr	4,850 SF	Industrial / Flex

### PROPERTY OVERVIEW

- Flex Space Units Available For Lease
- Office Space Varies Per Unit
- 12' Clear Ceilings
- 10' x 10' Drive-in Door Per Unit
- CAM: \$2.00/SF: Insurance: \$1.00/SF: RE Taxes: \$2.00/SF



**PAT CROWLEY**

847.758.9200 x310

PCROWLEY@BROWNCOMMERCIAL.COM

**TRINITY SCURTO, SIOR**

847.758.9200 x304

TSCURTO@BROWNCOMMERCIAL.COM

BROWNCOMMERCIAL.COM

//

1400 E. HIGGINS RD. SUITE A, ELK GROVE VILLAGE, IL 60007

//

847.758.9200

No warranties or representations is made as to the accuracy of the foregoing information. Terms and availability are subject to changes or withdrawal without notice



# 3,164 - 7,050 SF

## Industrial Property For Lease



**BROWN**  
COMMERCIAL GROUP, INC.

**1230-1300 MARK ST., BENSENVILLE, IL 60106**



**PAT CROWLEY**

847.758.9200 x310

[PCROWLEY@BROWNCOMMERCIAL.COM](mailto:PCROWLEY@BROWNCOMMERCIAL.COM)

**TRINITY SCURTO, SIOR**

847.758.9200 x304

[TSCURTO@BROWNCOMMERCIAL.COM](mailto:TSCURTO@BROWNCOMMERCIAL.COM)

[BROWNCOMMERCIAL.COM](http://BROWNCOMMERCIAL.COM)

//

1400 E. HIGGINS RD. SUITE A, ELK GROVE VILLAGE, IL 60007

//

847.758.9200

No warranties or representations is made as to the accuracy of the foregoing information. Terms and availability are subject to changes or withdrawal without notice

# 3,164 - 7,050 SF

## Industrial Property For Lease



**BROWN**  
COMMERCIAL GROUP, INC.

1230-1300 MARK ST., BENSENVILLE, IL 60106



### NOTE:

ALL GRID DIMENSIONS ARE APPROXIMATE & BASED ON INTERIOR TAPE MEASUREMENTS CONDUCTED OCTOBER 7th AND 8th, 1998 BY THIS ARCHITECT.

THE FIELD MEASUREMENTS ALONG WITH THE MULTIPLE PHOTOGRAPHS TAKEN AND A SURVEY PREPARED BY EDWARD J. MOLLOY DATED APRIL 12, 1984 WERE USED TO PREPARE THIS DRAWING.

NO ORIGINAL DRAWINGS OR AS-BUILT DRAWINGS WERE AVAILABLE.

1230 MARK STREET



PROMOTIONAL SIGNS, INC.  
OFFICES 2,677 S.F.  
WAREHOUSE 1,520 S.F.  
TOTAL 4,197 S.F.

EXISTING  
FLOOR PLAN  
1/4" = 1'-0"



THIS INSTRUMENT IS A  
JOSEPH ANGELO OWEN  
BE REPRODUCED IN ANY  
EXPRESSED WRITTEN P

UNIT 1230

**PAT CROWLEY**

847.758.9200 x310

PCROWLEY@BROWNCOMMERCIAL.COM

**TRINITY SCURTO, SIOR**

847.758.9200 x304

TSCURTO@BROWNCOMMERCIAL.COM

BROWNCOMMERCIAL.COM

//

1400 E. HIGGINS RD. SUITE A, ELK GROVE VILLAGE, IL 60007

//

847.758.9200

No warranties or representations is made as to the accuracy of the foregoing information. Terms and availability are subject to changes or withdrawal without notice

# Industrial Property For Lease

**1230-1300 MARK ST., BENSENVILLE, IL 60106**



UNIT 1244

PCROWLEY@BROWNCOMMERCIAL.COM

TSCURTO@BROWNCOMMERCIAL.COM

847.758.9200

No warranties or representations is made as to the accuracy of the foregoing information. Terms and availability are subject to changes or withdrawal without notice.

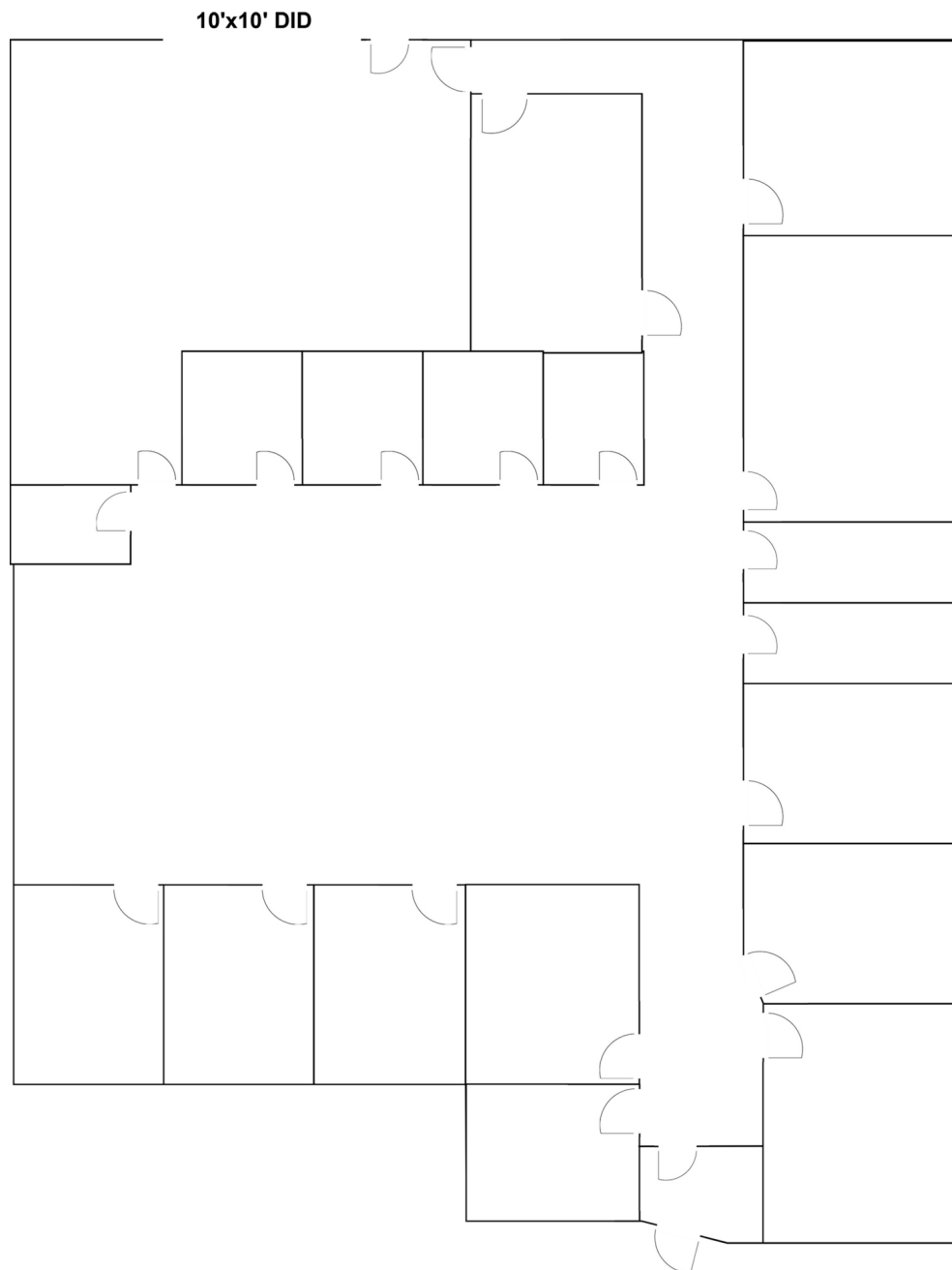
# 3,164 - 7,050 SF

## Industrial Property For Lease



**BROWN**  
COMMERCIAL GROUP, INC.

**1230-1300 MARK ST., BENSENVILLE, IL 60106**



UNIT 1260

**PAT CROWLEY**

847.758.9200 x310

PCROWLEY@BROWNCOMMERCIAL.COM

**TRINITY SCURTO, SIOR**

847.758.9200 x304

TSCURTO@BROWNCOMMERCIAL.COM

**BROWNCOMMERCIAL.COM**

//

**1400 E. HIGGINS RD. SUITE A, ELK GROVE VILLAGE, IL 60007**

//

**847.758.9200**

No warranties or representations is made as to the accuracy of the foregoing information. Terms and availability are subject to changes or withdrawal without notice



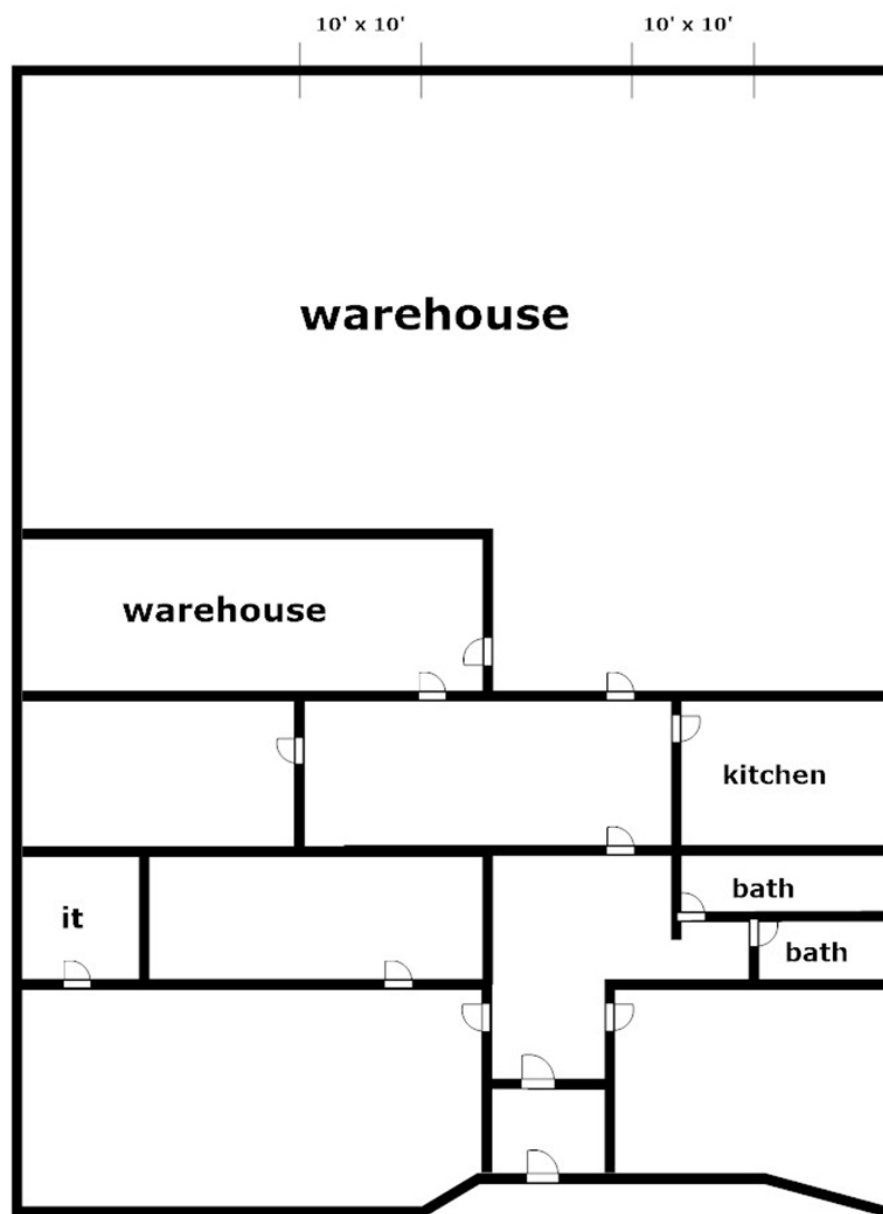
# 3,164 - 7,050 SF

## Industrial Property For Lease



**BROWN**  
COMMERCIAL GROUP, INC.

**1230-1300 MARK ST., BENSENVILLE, IL 60106**



UNIT 1296

**PAT CROWLEY**

847.758.9200 x310

PCROWLEY@BROWNCOMMERCIAL.COM

**TRINITY SCURTO, SIOR**

847.758.9200 x304

TSCURTO@BROWNCOMMERCIAL.COM

**BROWNCOMMERCIAL.COM**

//

**1400 E. HIGGINS RD. SUITE A, ELK GROVE VILLAGE, IL 60007**

//

**847.758.9200**

No warranties or representations is made as to the accuracy of the foregoing information. Terms and availability are subject to changes or withdrawal without notice