



42 W 65th St

42 W 65th St, New York, NY 10023



Retail Vacancies

APTSNY.com

111 N Central Ave, Suite 400, Hartsdale, NY 10530

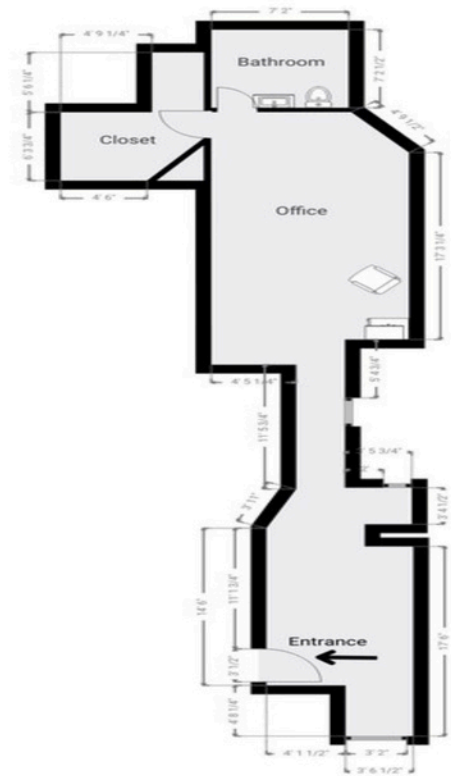
retail@aptsny.com

(917) 444-9777



42 W 65th St

\$1,700 PER MONTH



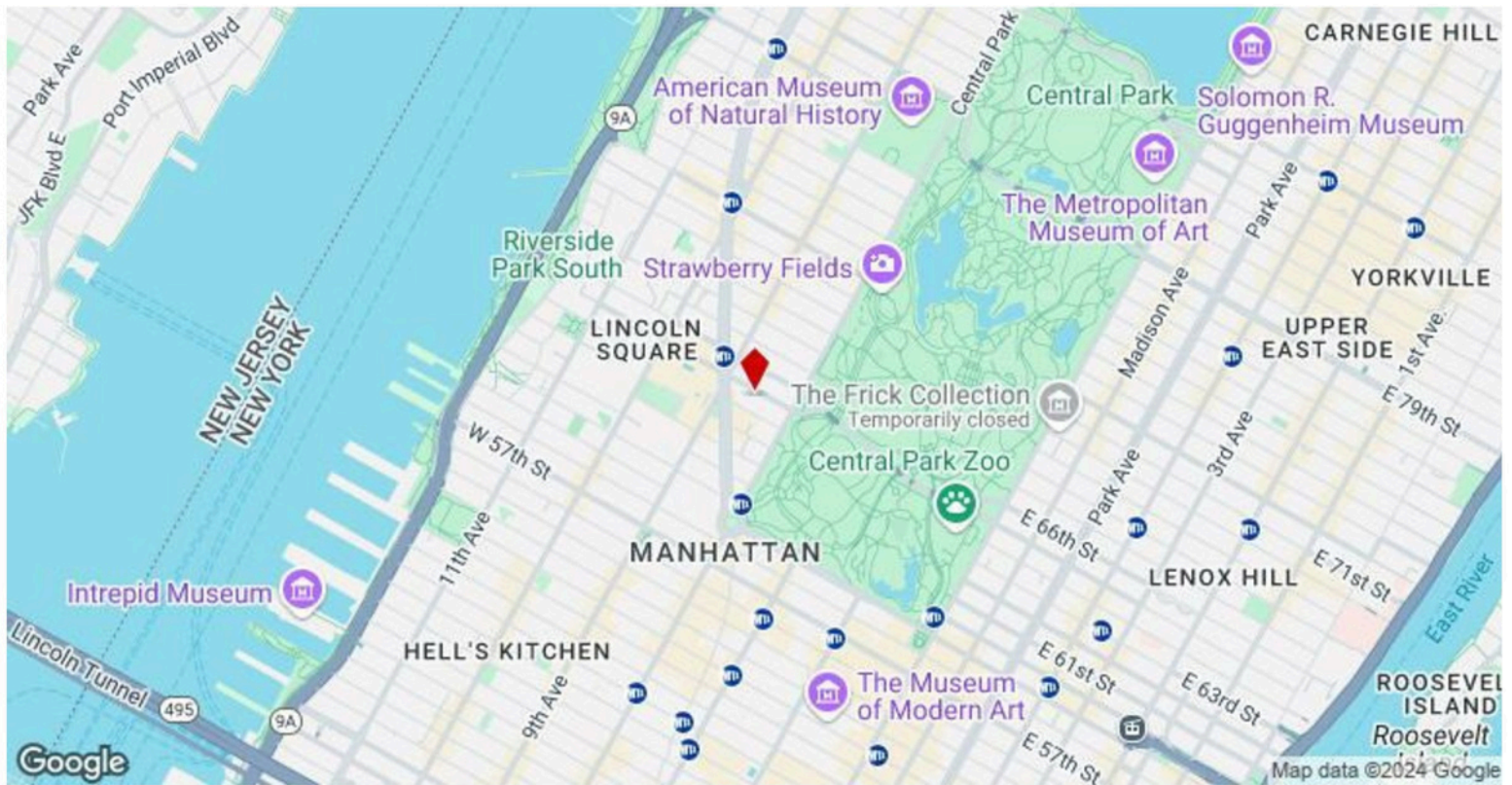
Rental Rate: \$1,700/Month

Property Type: Multifamily

Property Subtype: Apartment

Apartment Style: Mid Rise

Year Built: 1910



42 W 65th St, New York, NY 10023

Office/retail space for lease direct by owner. Location is 42 West 65th Street, between Central Park West and Columbus Avenue. This garden-level space has direct street access and is suitable for a professional office and showroom uses. Convenient to Lincoln Center, Julliard School, Fordham University and Central Park. Space is approximately 550 rentable SF. ASKING RENT IS \$1,700/MONTH.

Property Photos



Interior Photo



Interior Photo

Property Photos



Interior Photo



Interior Photo

Property Photos

