

OFFICE FOR LEASE

\$**24.00**  
*psf NNN* | \$**17.45**  
*Opex psf*

# Sunrise Corporate Plaza

1300 Sawgrass Corporate Parkway, Sunrise, FL 33323



[Click to view property video](#)

**Greg Martin**

*Principal, Managing Director*

(954) 903-1815

[greg.martin@avisonyoung.com](mailto:greg.martin@avisonyoung.com)

**Justin Cope, SIOR**

*Principal*

(954) 903-3701

[justin.cope@avisonyoung.com](mailto:justin.cope@avisonyoung.com)

**Lisa Blumer, CCIM**

*Principal*

(954) 903-3703

[lisa.blumer@avisonyoung.com](mailto:lisa.blumer@avisonyoung.com)

**AVISON  
YOUNG**



# Elevate Your Workspace: Exceptional Amenities for Your Success



## Prime Location

Easy access to I-595, I-75, Florida Turnpike, Sawgrass Mills & Amerant Bank Arena



## Abundant Parking

Abundant 4.8/1,000 SF parking ratio for convenience. Some covered spaces available



## Airport Access

15 min to Fort Lauderdale International Airport; 30 min to Miami International Airport



## Outdoor Seating Area

Dedicated outdoor seating areas perfect for meetings, breaks, and relaxation



## Greg Martin

*Principal, Managing Director*

(954) 903-1815

[greg.martin@avisonyoung.com](mailto:greg.martin@avisonyoung.com)

## Justin Cope, SIOR

*Principal*

(954) 903-3701

[justin.cope@avisonyoung.com](mailto:justin.cope@avisonyoung.com)

## Lisa Blumer, CCIM

*Principal*

(954) 903-3703

[lisa.blumer@avisonyoung.com](mailto:lisa.blumer@avisonyoung.com)

**AVISON  
YOUNG**



# Step Inside Your Next Office

GALLERY



## Greg Martin

*Principal, Managing Director*

(954) 903-1815

[greg.martin@avisonyoung.com](mailto:greg.martin@avisonyoung.com)

## Justin Cope, SIOR

*Principal*

(954) 903-3701

[justin.cope@avisonyoung.com](mailto:justin.cope@avisonyoung.com)

## Lisa Blumer, CCIM

*Principal*

(954) 903-3703

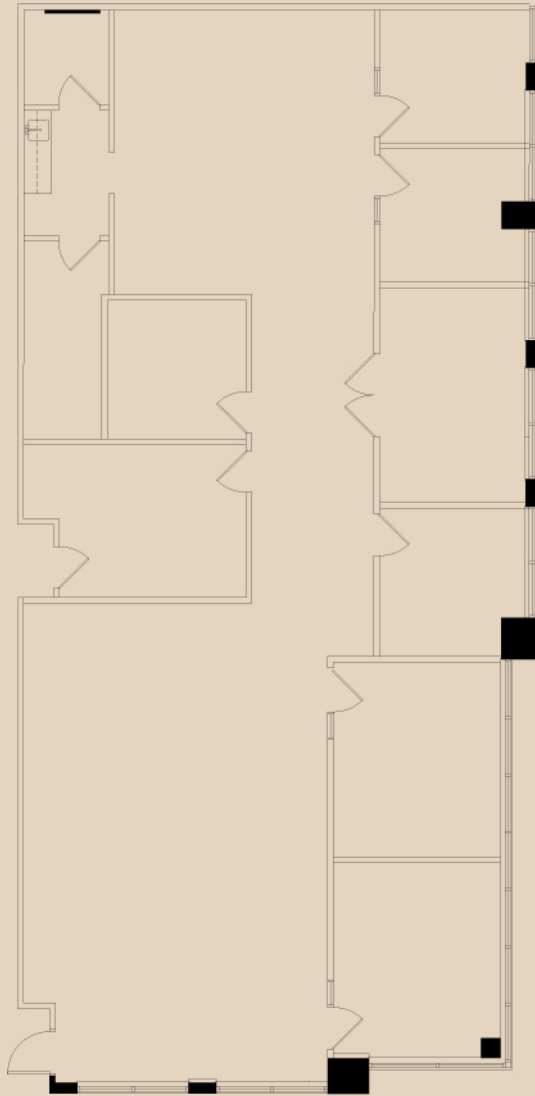
[lisa.blumer@avisonyoung.com](mailto:lisa.blumer@avisonyoung.com)

**AVISON  
YOUNG**



# Suite 130

3,249 SF



**Greg Martin**  
*Principal, Managing Director*  
(954) 903-1815  
greg.martin@avisonyoung.com

**Justin Cope, SIOR**  
*Principal*  
(954) 903-3701  
justin.cope@avisonyoung.com

**Lisa Blumer, CCIM**  
*Principal*  
(954) 903-3703  
lisa.blumer@avisonyoung.com

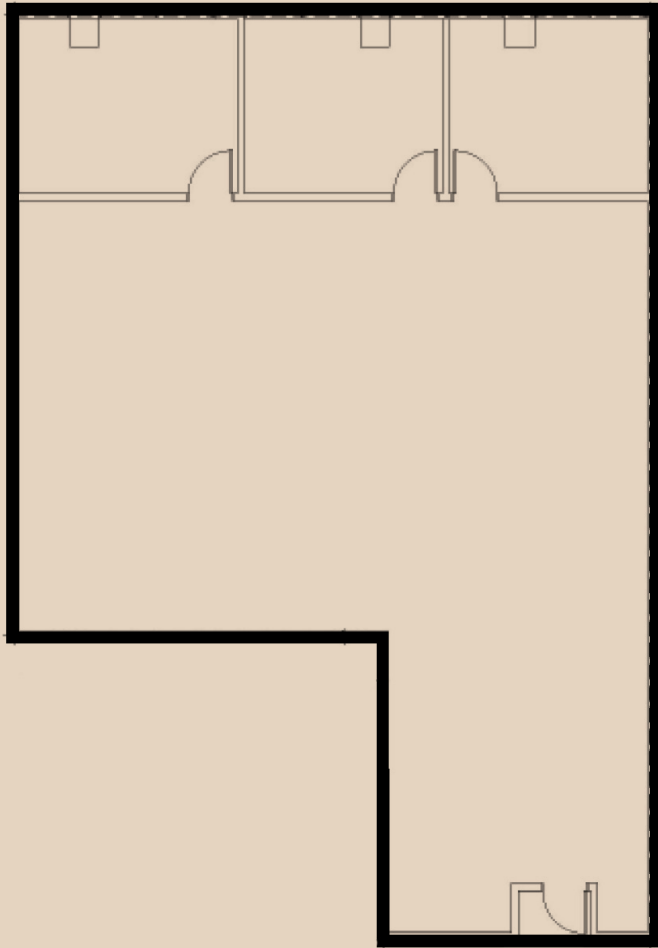
**AVISON  
YOUNG**

AVAILABILITIES



# Suite 145

2,650 SF



[View Suite Video](#)



AVAILABLE

**Greg Martin**

*Principal, Managing Director*

(954) 903-1815

[greg.martin@avisonyoung.com](mailto:greg.martin@avisonyoung.com)

**Justin Cope, SIOR**

*Principal*

(954) 903-3701

[justin.cope@avisonyoung.com](mailto:justin.cope@avisonyoung.com)

**Lisa Blumer, CCIM**

*Principal*

(954) 903-3703

[lisa.blumer@avisonyoung.com](mailto:lisa.blumer@avisonyoung.com)

**AVISON  
YOUNG**



# Suite 300

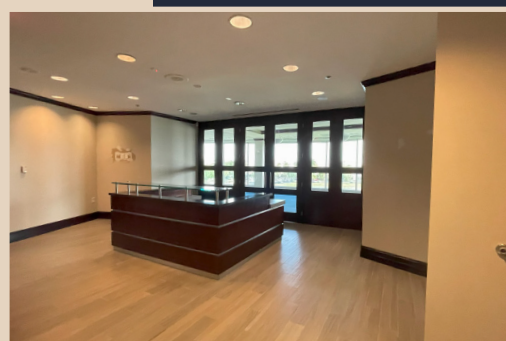
## 37,818 SF



*Full Floor Available with  
Building Top Signage  
Available*



[View Suite Video](#)



AVAILABILITIES

### Greg Martin

*Principal, Managing Director*

(954) 903-1815

[greg.martin@avisonyoung.com](mailto:greg.martin@avisonyoung.com)

### Justin Cope, SIOR

*Principal*

(954) 903-3701

[justin.cope@avisonyoung.com](mailto:justin.cope@avisonyoung.com)

### Lisa Blumer, CCIM

*Principal*

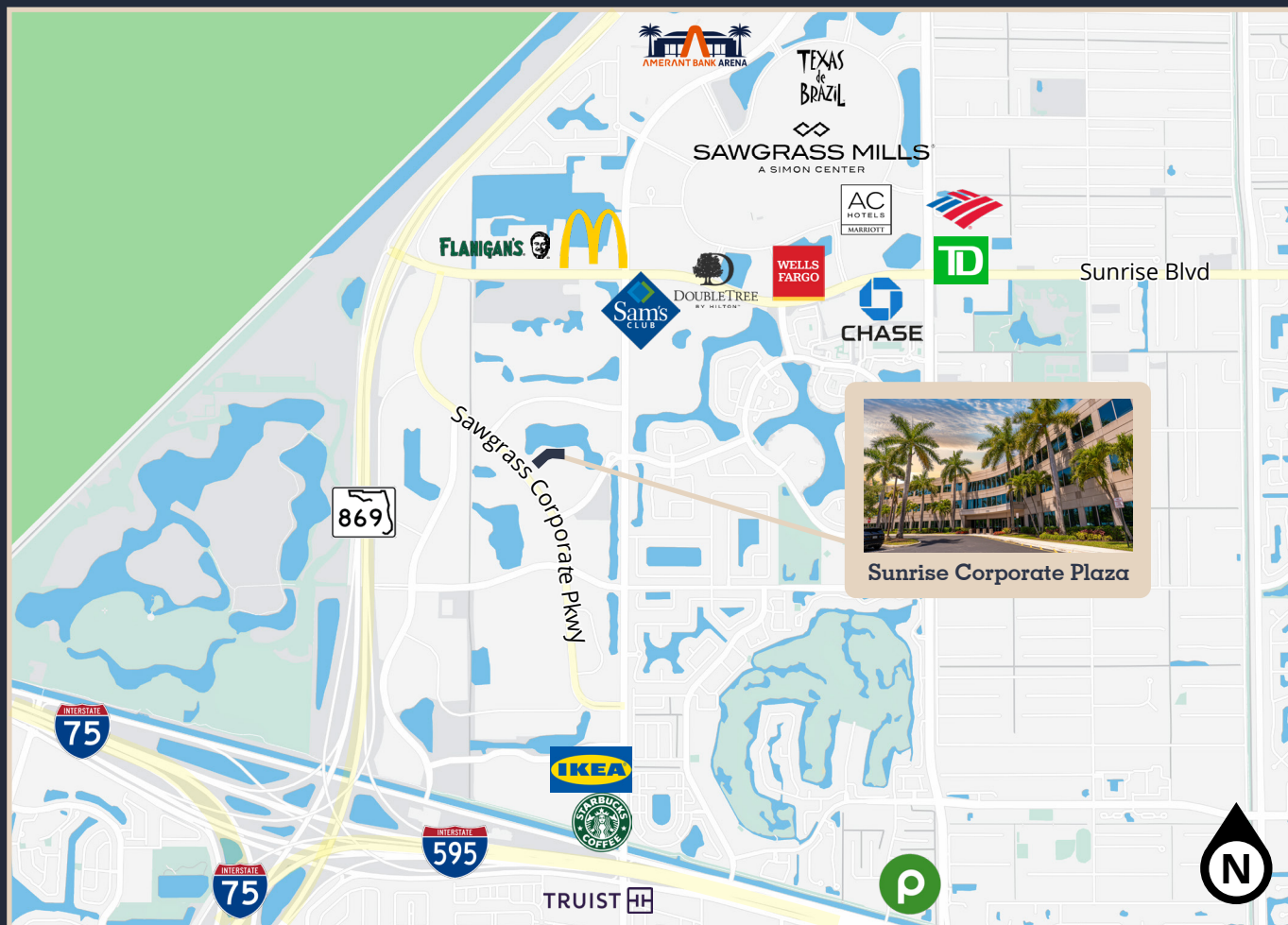
(954) 903-3703

[lisa.blumer@avisonyoung.com](mailto:lisa.blumer@avisonyoung.com)

**AVISON  
YOUNG**



# Surrounded by Convenience



## Restaurants

Flanigan's  
Starbucks

Texas de Brazil  
McDonald's

## Shopping

Sawgrass Mills  
Sam's Club

Publix  
IKEA

## Banks

Wells Fargo  
Bank Of America

Chase  
Truist

## Hotels

Double Tree by Hilton  
AC Hotels by Marriot

## Entertainment

Amerant Bank Arena

### Greg Martin

Principal, Managing Director

(954) 903-1815

greg.martin@avisonyoung.com

### Justin Cope, SIOR

Principal

(954) 903-3701

justin.cope@avisonyoung.com

### Lisa Blumer, CCIM

Principal

(954) 903-3703

lisa.blumer@avisonyoung.com

**AVISON  
YOUNG**

PROPERTY LOCATION