

FOR LEASE

# 137 East State Street Ext

Gloversville, NY 12078



200,000± SF INDUSTRIAL SPACE

## 200,000± SF

### Property Highlights

200,000± SF main building plus several free-standing buildings on 48.9± acres. Just off Route 30A, 14± miles north of Exit 28 of the NYS Thruway, 40± miles west of Exit 24 of I-90 (Albany).

- Concrete block building with SD Caruthers Hypalon single ply membrane roof
- Gas hot air units throughout the building
- Central air throughout production areas
- 69 KVA substation on site with 480V 3-phase service throughout
- Two (2) 200 HP 1962 Ames steam generators with retrofitted Iron Firemen burners (1 gas and 1 gas + oil dual fuel)

### Contact

**PETER W. STRUZZI, SIOR**  
President  
Principal Real Estate Broker  
+1 518 229 6795  
pstruzzi@pyramidbrokerage.com

**MICHAEL J. SAMPONE**  
Associate Real Estate Broker  
+1 518 727 7561  
msampone@pyramidbrokerage.com

40 British-American Blvd.,  
Latham, New York 12110  
+1 518 489 9199  
pyramidbrokerage.com

Demographic	1 Mile	3 Miles	5 Miles
Population	2,840	19,126	27,734
Households	1,187	8,142	11,624
Average H.H. Income	\$75,118	\$63,922	\$69,053
Total Employees	2,301	7,486	13,015
Total Businesses	123	711	1,209

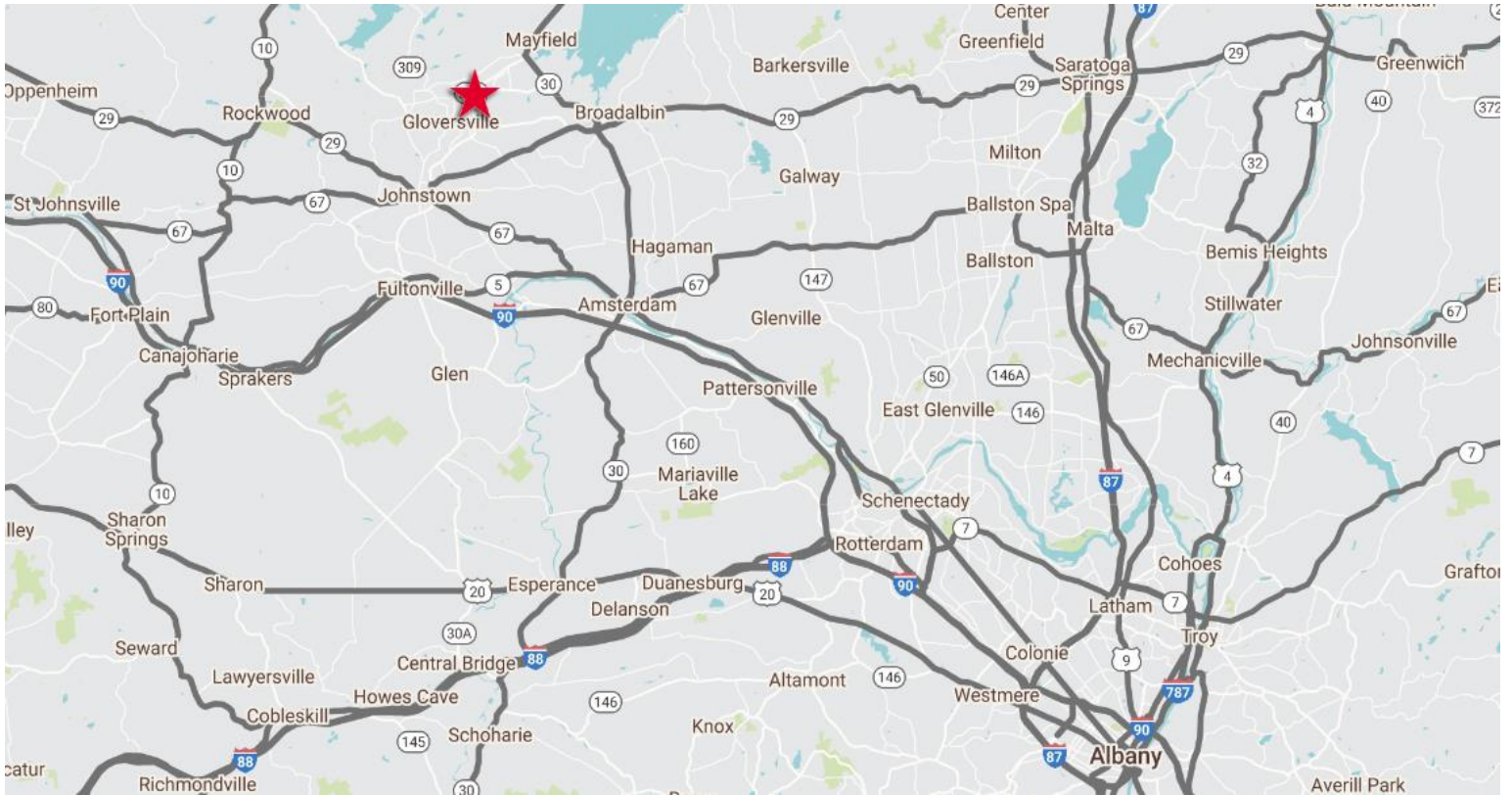
Source: ESRI 2023

Traffic Counts	
East State St Ext & Co Rd 154	3,015 AADT
State Highway 30A & East State St Ext	10,174 AADT

Source: NYS DOT

**FOR LEASE**

**137 East State Street Ext | Gloversville, NY**

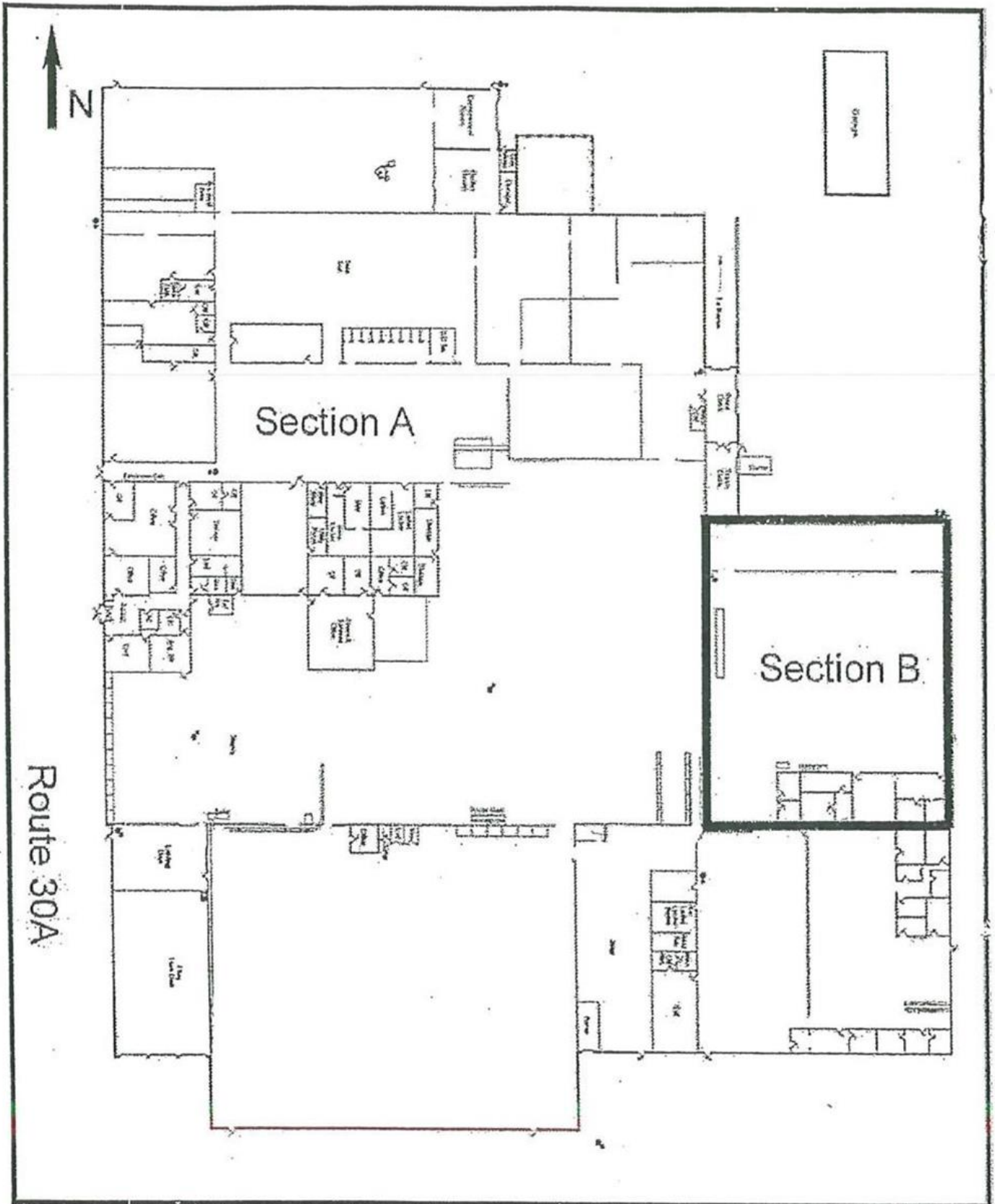


### Property Highlights

- \$5.00/SF Gross + Utilities
- Zoned M-1 Manufacturing
- Municipal water and sewer
- 250± Parking Spaces
- Wet sprinkler system with 8± independent risers
- Ceiling Height – 14’3” in Section A and 18’ in Section B
- **Truck Loading**
  - East Wall
    - (4) 7’ X 10’ manual doors @ 48” height
    - (1) 8’ x 10’ manual door with ramp-up into building
  - South Wall
    - (1) 8’ X 10’ manual door @ 48” to interior ramp
    - (3) interior loading docks @ 48” with Kelley hydraulic loading levelers; 88’ deep interior hydraulic court
- **Out Buildings**
  - Two (2) contiguous metal storage buildings(14,880± SF and 6,240± SF) with gas fired hot air blowers. Exterior platform at dock height for truck loading and 16’ clear height at eaves.
  - One (1) 3 bay masonry garage structure with (3) 12’ x 12’ and (1) 8’ x 10’ manual overhead doors.
  - Small grounds maintenance shed One (1) air compressor with building

FOR LEASE

137 East State Street Ext | Gloversville, NY



**FOR LEASE**

**137 East State Street Ext | Gloversville, NY**

